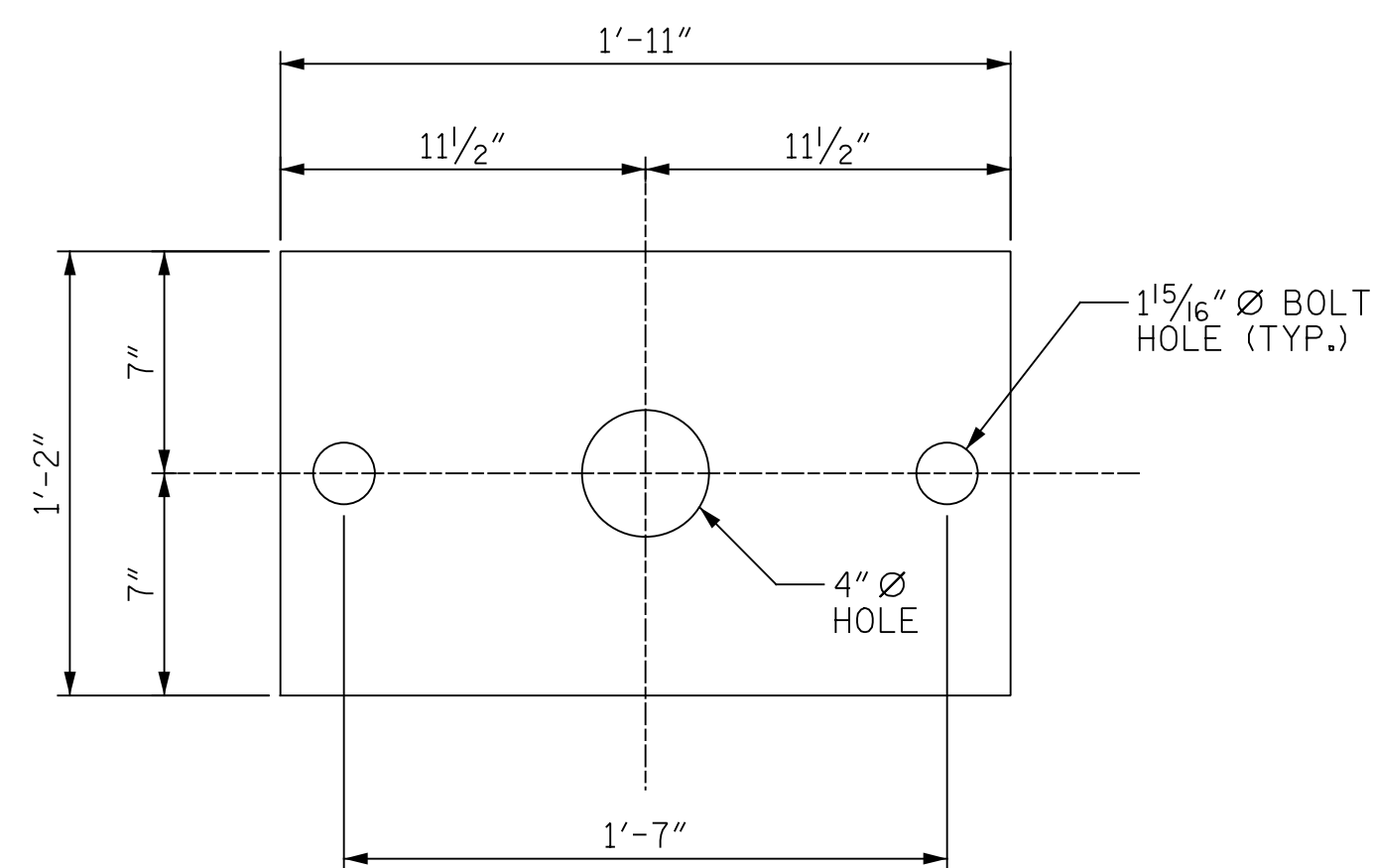
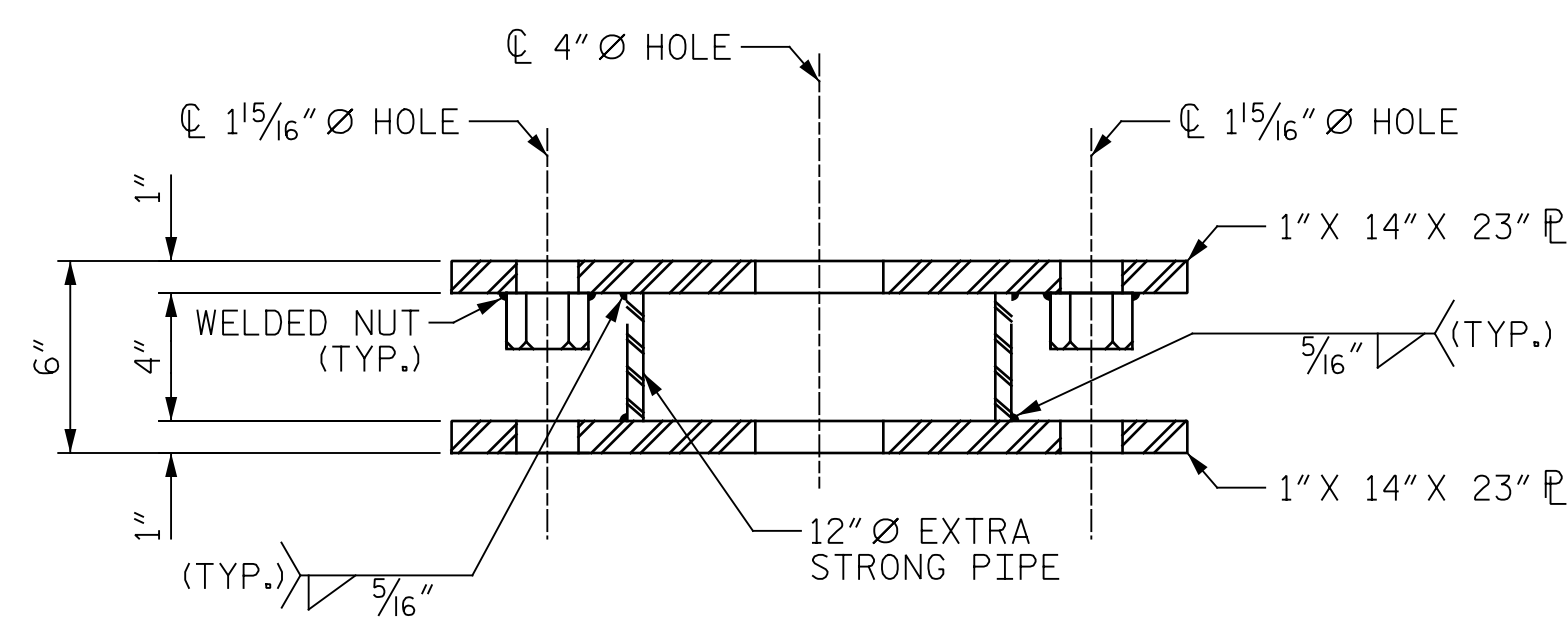


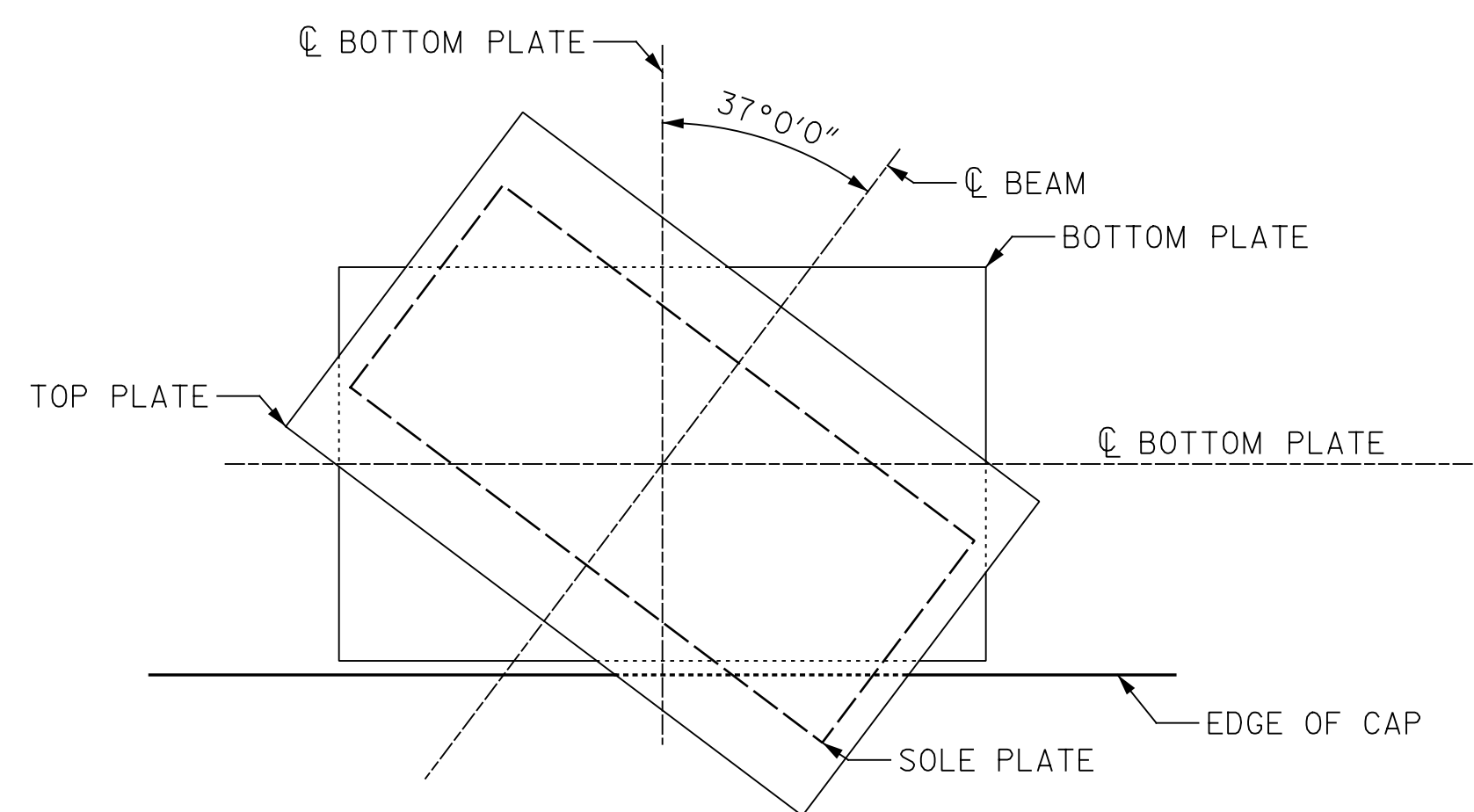
TOP PLATE PLAN



TOP PLATE

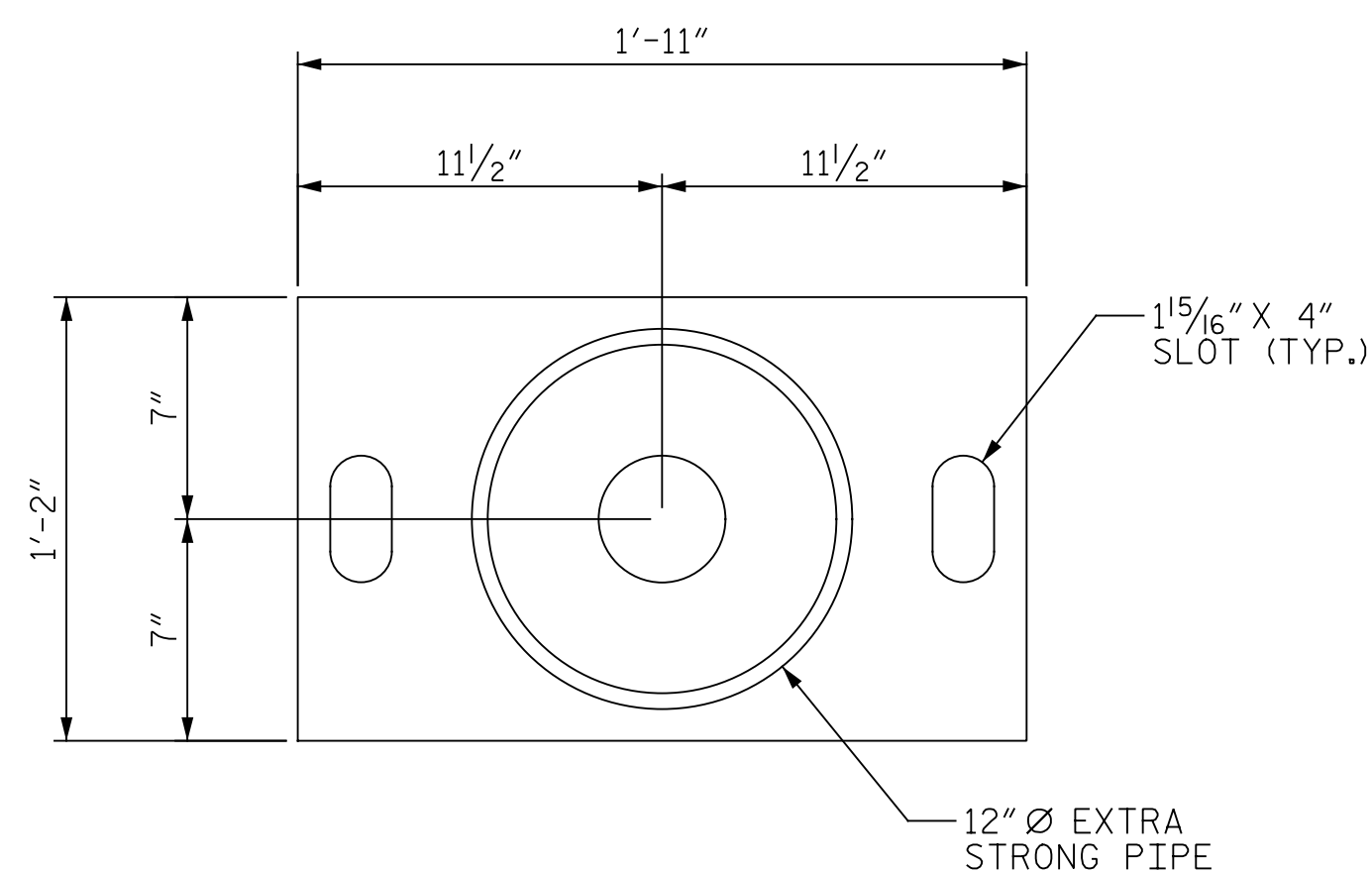


ELEVATION

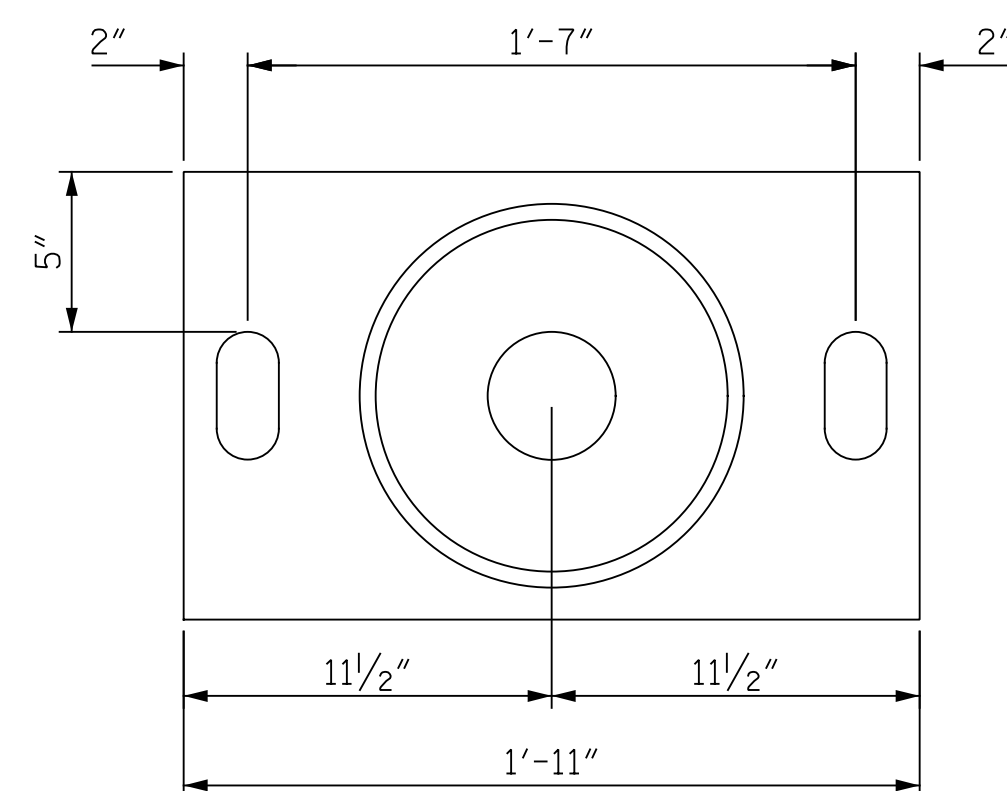


TOP PLATE TO BOTTOM PLATE ORENTATION (TYP.)

(HOLES & SLOTS HAVE BEEN OMITTED FOR CLARITY)



BOTTOM PLATE PLAN



BOTTOM PLATE

NOTES:

ALL DIMENSIONS SHOWN ARE HORIZONTAL OR VERTICAL, UNLESS OTHERWISE NOTED.

ALL 12"Ø PIPES SHALL BE EXTRA STRONG ASTM SPECIFICATION A53 GRADE B OR A501 OR APPROVED EQUAL.

ALL STRUCTURAL STEEL PLATES SHALL CONFORM TO AASHTO M270 GRADE 50 STEEL OR APPROVED EQUAL.

ALL STRUCTURAL STEEL SHALL BE SHOP CLEANED AND SHOP PAINTED ACCORDING TO PAINT SYSTEM #1 OF SECTION 442 OF THE STANDARD SPECIFICATIONS, OR GALVANIZED 12W STANDARD SPECIFICATIONS.

ALL SURFACES OF BEARING PLATES SHALL BE SMOOTH AND STRAIGHT.

AFTER LOWERING EACH SPAN ONTO THE STUB COLUMN ASSEMBLY, TIGHTEN THE ANCHOR BOLTS AT BOTTOM PLATE PER MANUFACTURERS RECOMMENDATIONS.

ALL PAINTED SURFACES DAMAGED DURING CONSTRUCTION SHALL BE REPAINTED, AS OUTLINED IN THE ARTICLE 442-11 OF THE STANDARD SPECIFICATIONS.

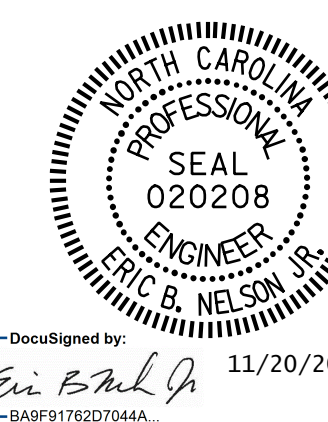
THE TOP OF THE DECK ELEVATION SHALL REMAIN THE SAME DURING AND AFTER CONSTRUCTION.

THE CONTRACTOR SHALL SUBMIT SHOP DRAWINGS FOR THE BEAM PEDESTAL AND ALL OTHER STRUCTURAL STEEL.

THE CONTRACTOR SHALL VERIFY THE STUB COLUMN ASSEMBLY HEIGHTS PRIOR TO FABRICATION.

FOR FIELD MEASURING, SEE SPECIAL PROVISIONS.

PROJECT NO. I-5889A
BUNCOMBE COUNTY
 BRIDGE NO. 377



STATE OF NORTH CAROLINA
 DEPARTMENT OF TRANSPORTATION
 RALEIGH

STUB COLUMN
 DETAILS BEAMS
 2-5

DRAWN BY : M.A.LEE DATE : 10/2017
 CHECKED BY : R.NELSON DATE : 10/2017

PLANS PREPARED BY:
Gannett Fleming
 Excellence Delivered As Promised
 2610 Wycliff Road
 Suite 102
 Raleigh, NC 27607-3073
 (919) 420-7660
 NC Lic. No. F-0270

DOCUMENT NOT CONSIDERED
 FINAL UNLESS ALL
 SIGNATURES COMPLETED

REVISIONS						SHEET NO.
NO.	BY:	DATE:	NO.	BY:	DATE:	S-178
1			3			TOTAL SHEETS
2			4			208