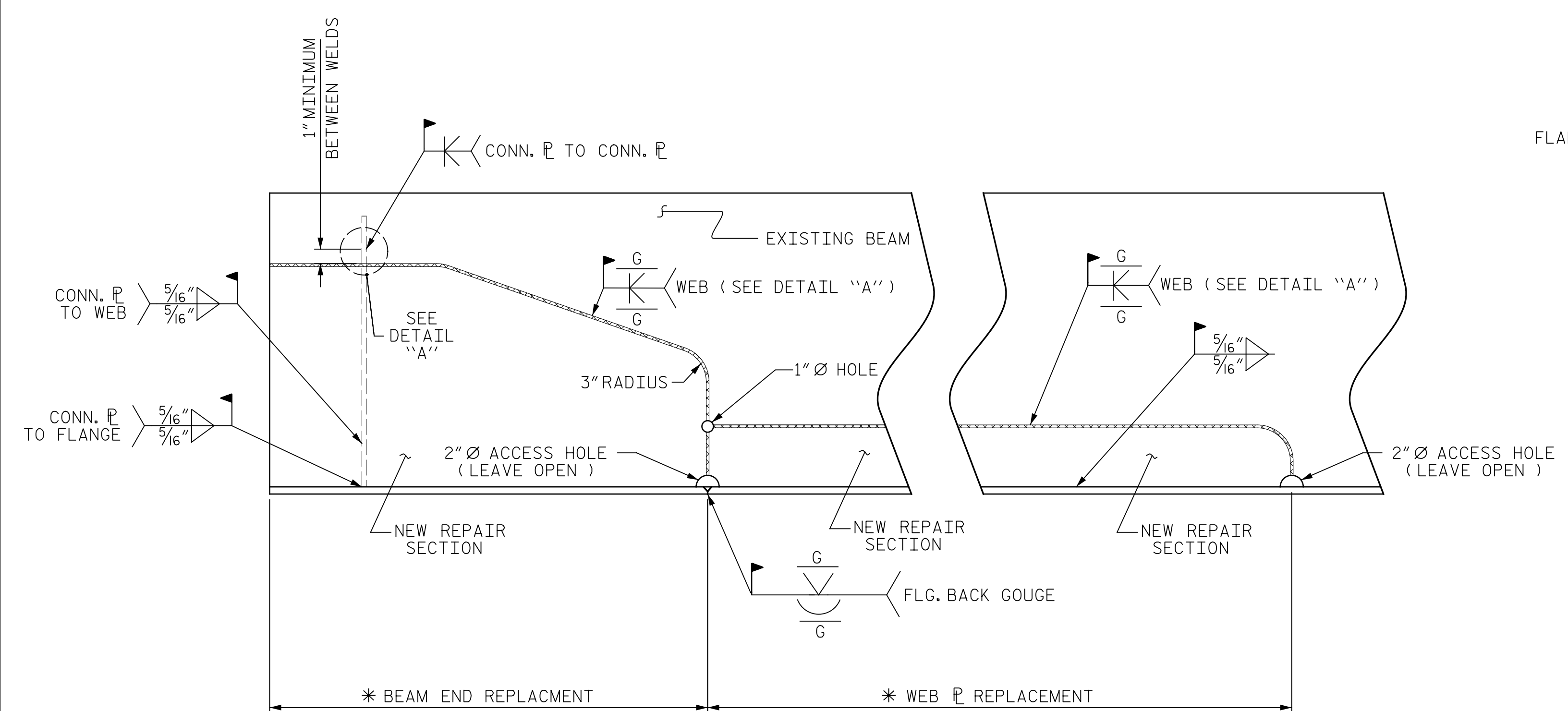


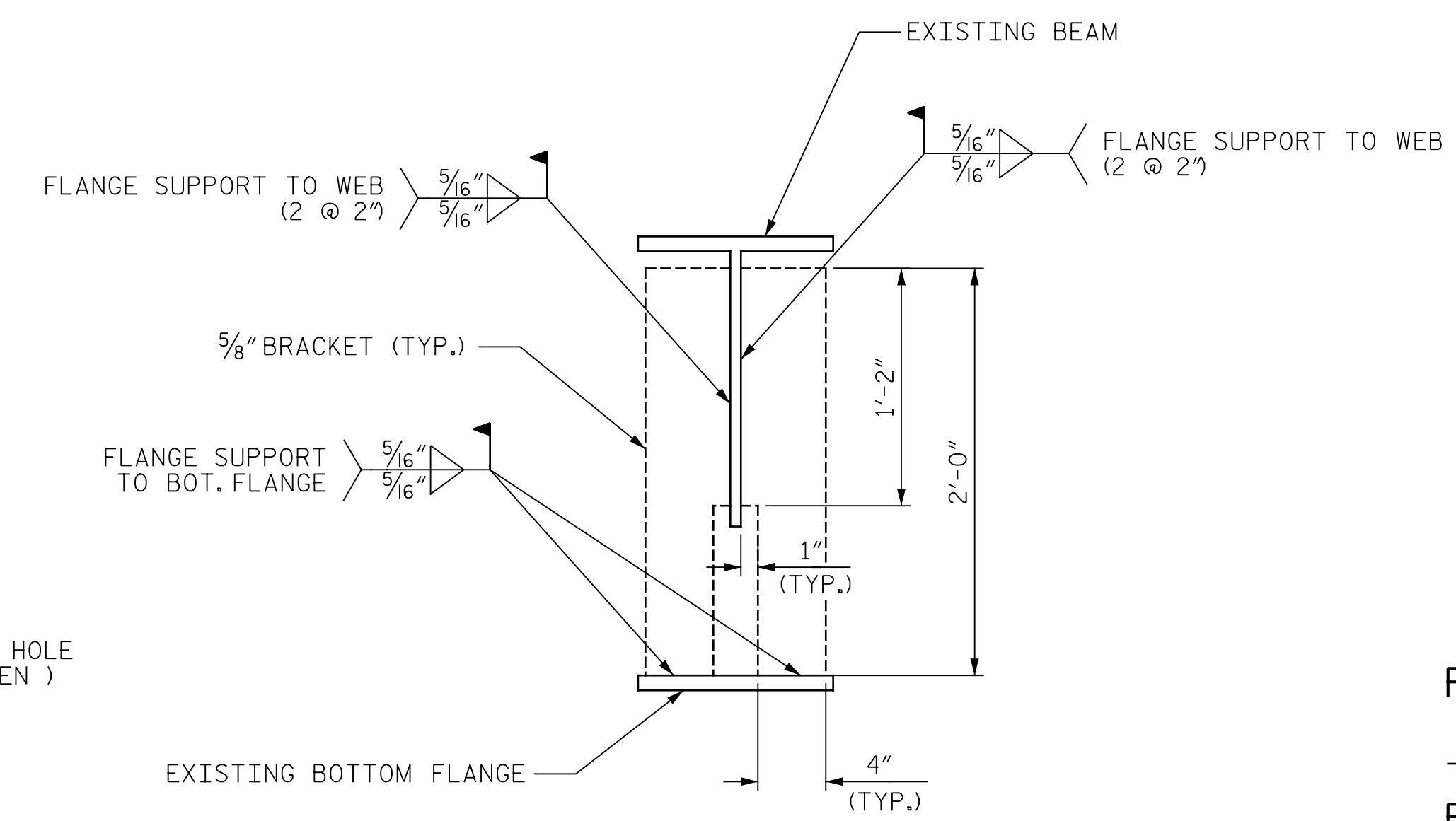
SECTION LOSS
BEAM END REPAIR
("BE" REPAIR)

* REPAIR BEAM END REPLACEMENT PRIOR TO WEB \square REPLACEMENT



SECTION LOSS
BEAM END REPAIR
("BE" REPAIR)

* REPAIR BEAM END REPLACEMENT PRIOR TO WEB \square REPLACEMENT



FLANGE SUPPORT BRACKET

NOTE:
INSTALL FLANGE SUPPORT BRACKET PRIOR TO MAKING WEB \square CUT
REMOVE FLANGE SUPPORT BRACKET AFTER NEW WEB \square HAS BEEN INSTALL.
GRIND WELDS FLUSH PRIOR TO PAINTING.



PROJECT NO. I-5889A
BUNCOMBE COUNTY
BRIDGE NO. 374

SHEET 2 OF 2

STATE OF NORTH CAROLINA
DEPARTMENT OF TRANSPORTATION
RALEIGH

BEAM END
REPAIR DETAILS

DRAWN BY : J.A. BOYER DATE : 10/2017
CHECKED BY : R.NELSON DATE : 10/2017

PLANS PREPARED BY:
Gannett Fleming
2610 Wycliff Road
Suite 102
Raleigh, NC 27607-3073
(919) 420-7660
Excellence Delivered As Promised NC Lic. No. F-0270

DOCUMENT NOT CONSIDERED
FINAL UNLESS ALL
SIGNATURES COMPLETED

REVISIONS						SHEET NO.
NO.	BY:	DATE:	NO.	BY:	DATE:	S-157
1			3			TOTAL SHEETS
2			4			208