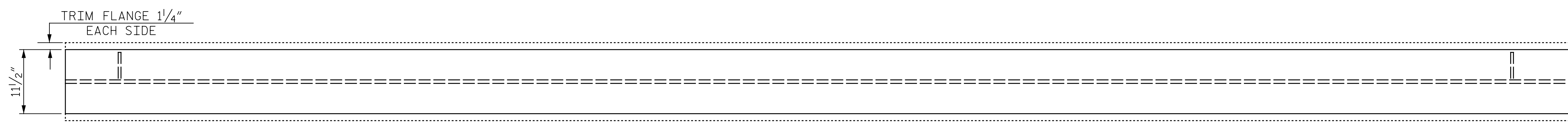
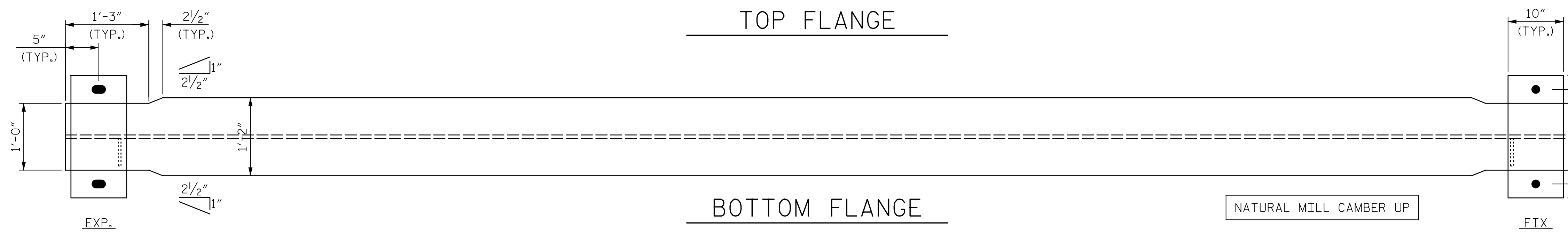


ELEVATION

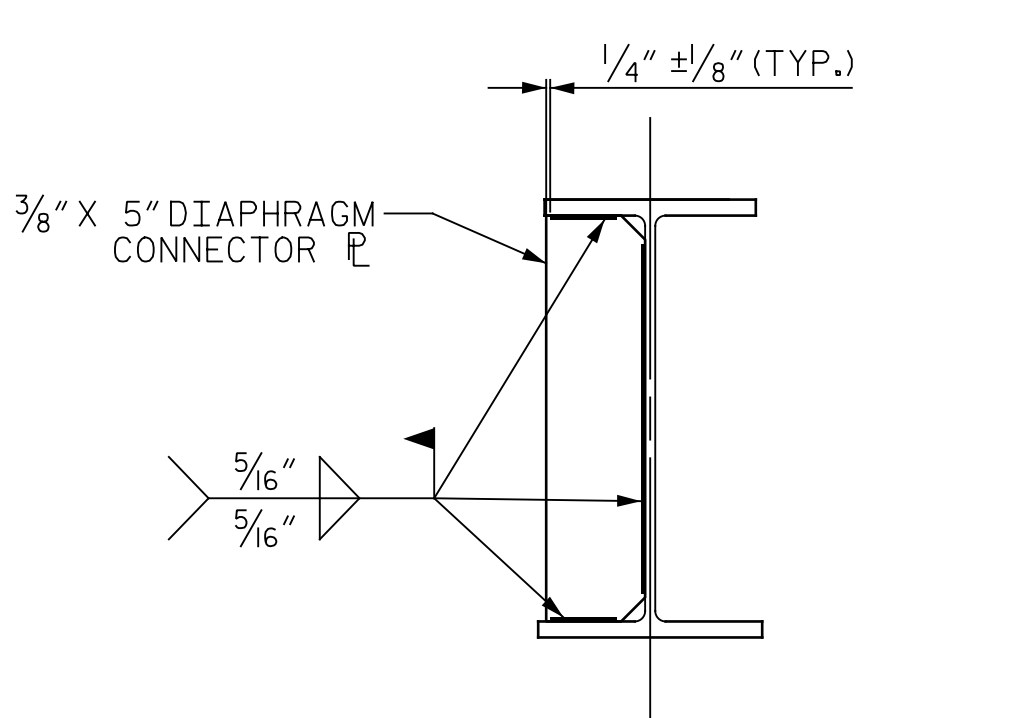
(CONNECTOR PLATES NOT SHOWN FOR CLARITY)



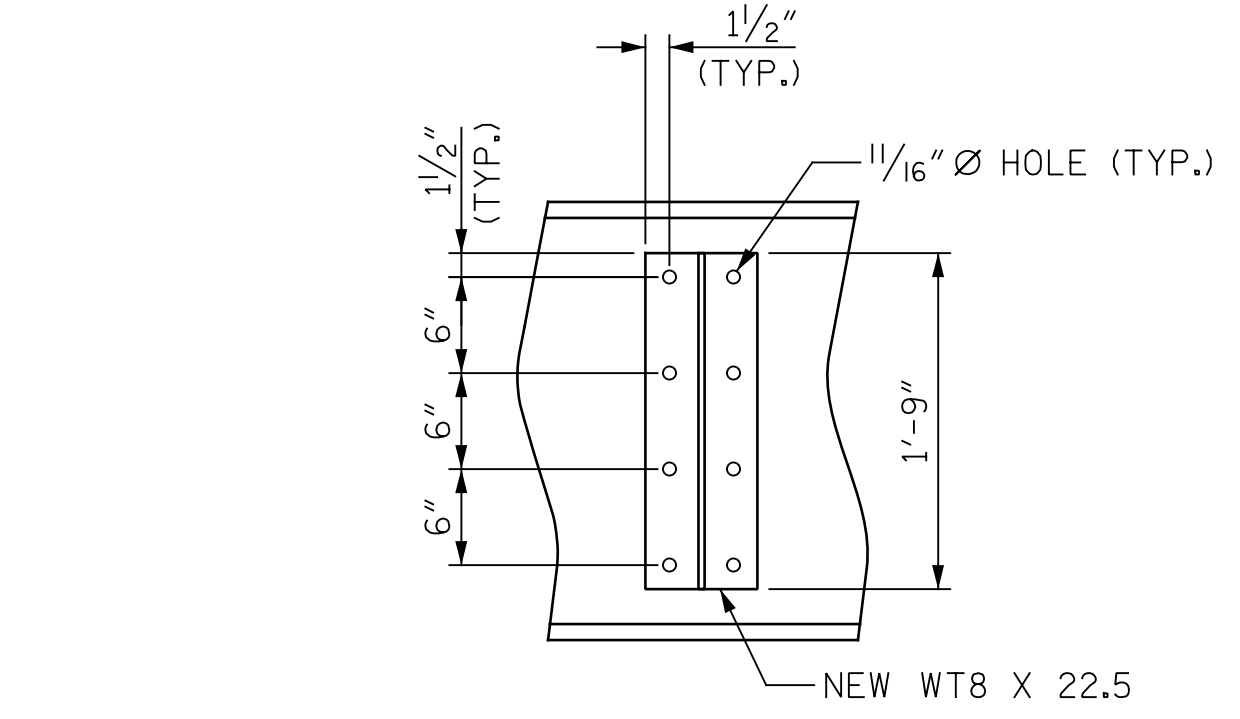
TOP FLANGE



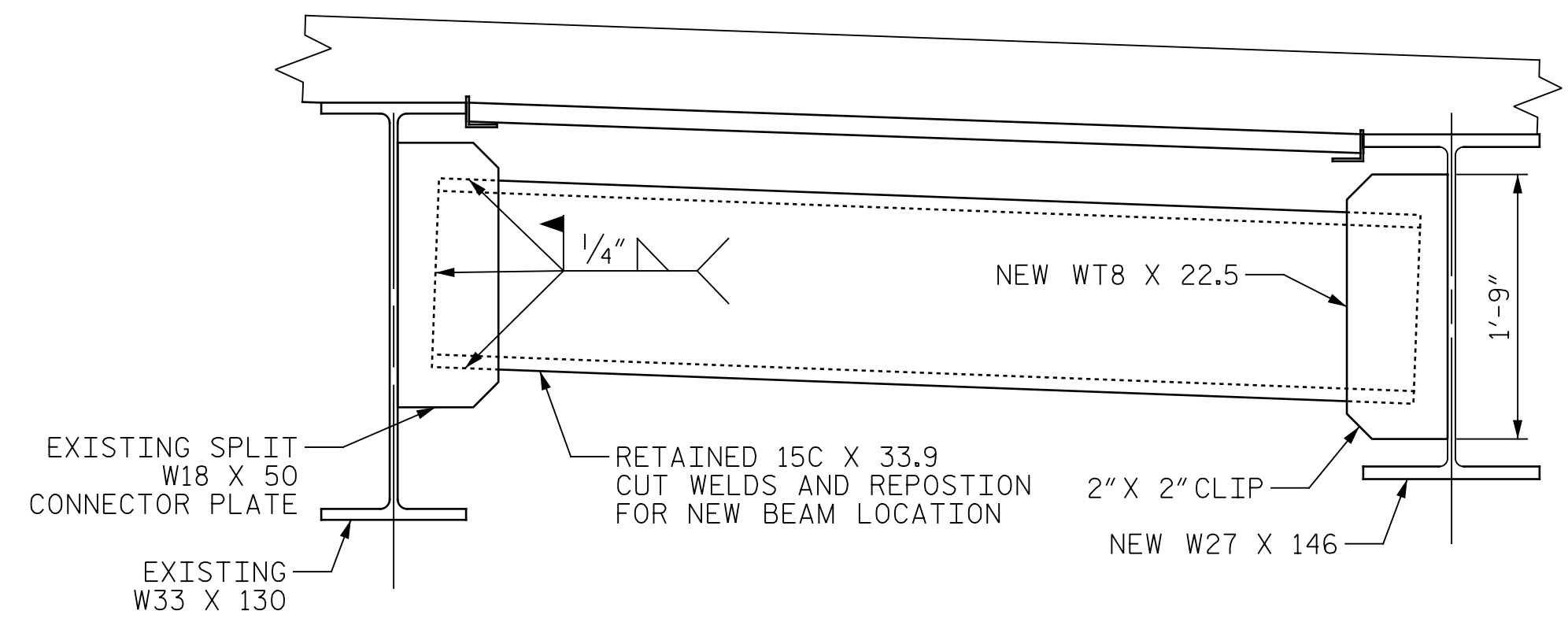
BOTTOM FLANGE



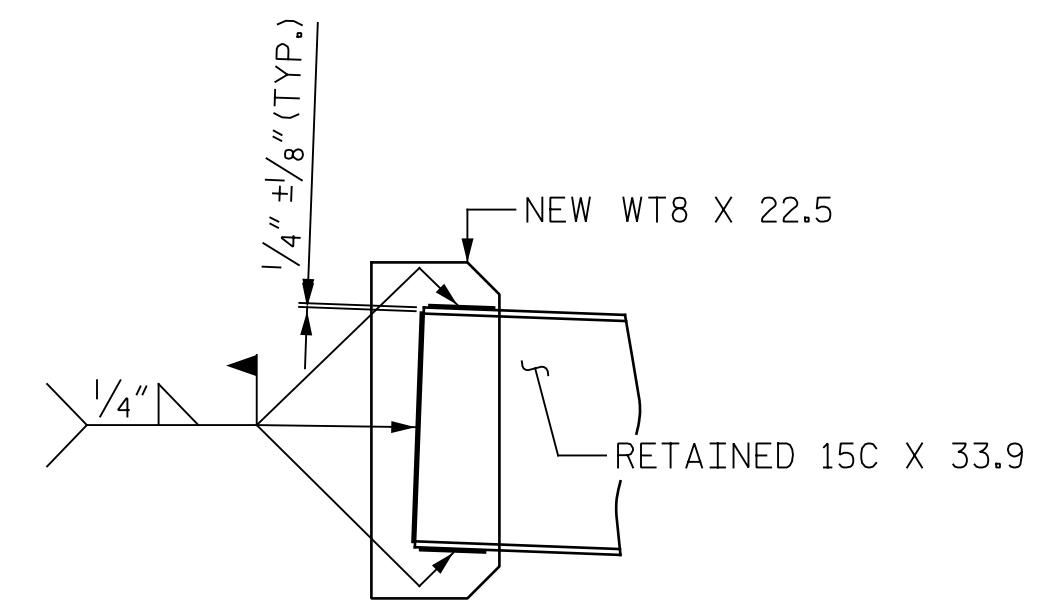
BENT DIAPHRAGM CONNECTOR TO NEW BEAM



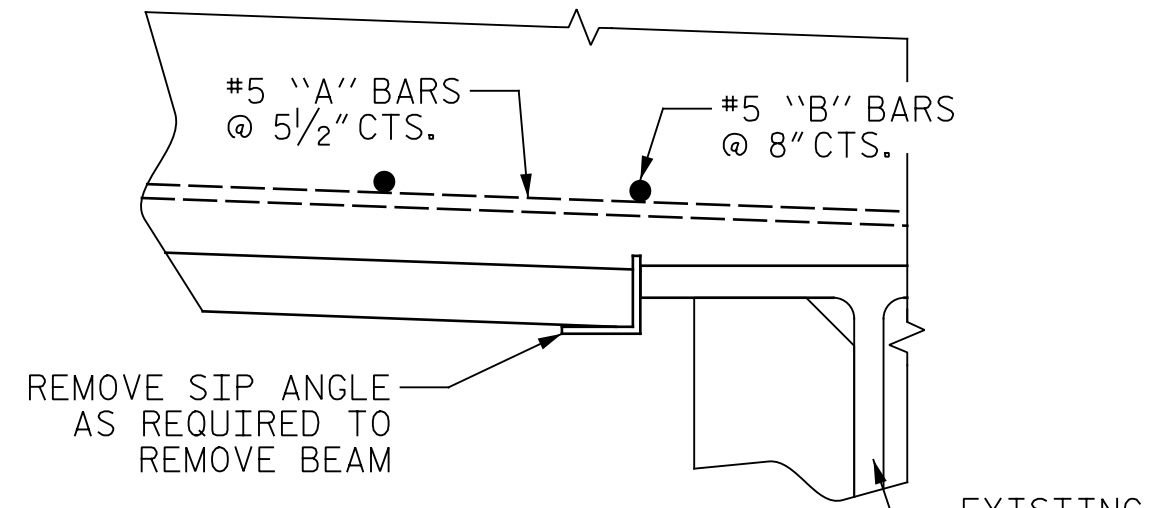
INTERMEDIATE CONNECTOR TO WEB DETAIL



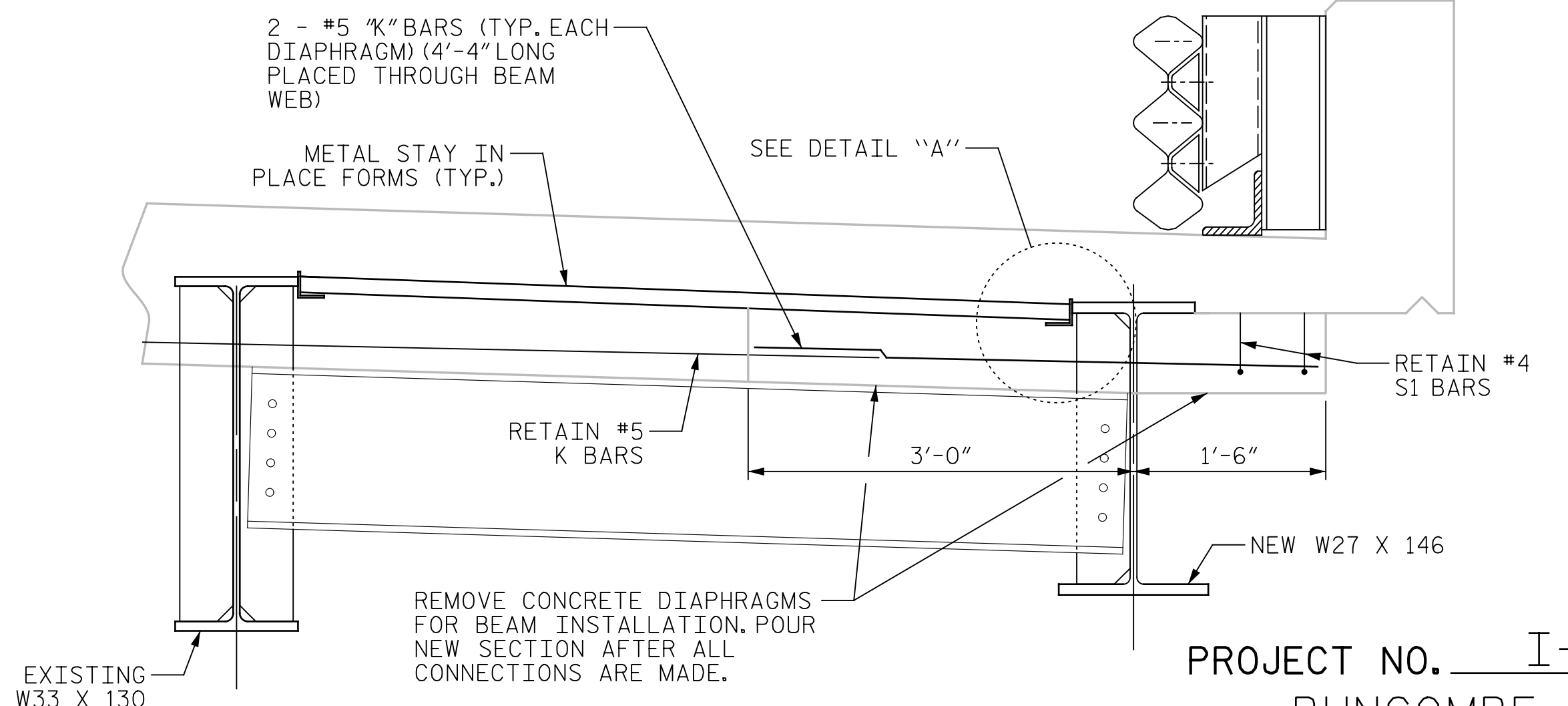
INTERMEDIATE DIAPHRAGM CONNECTION DETAIL



INTERMEDIATE CONNECTOR TO DIAPHRAGM DETAIL



DETAIL "A"

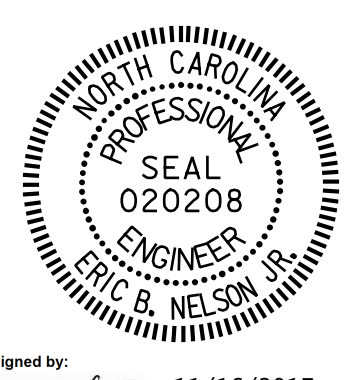


BENT DIAPHRAGM CONNECTION DETAIL

NOTES

- THE CONTRACTOR SHALL RETAIN THE EXISTING INTERMEDIATE DIAPHRAGM FOR RE-USE.
- THE CONTRACTOR IS RESPONSIBLE TO EVALUATE THE STRUCTURAL CONDITION OF THE EXISTING INTERMEDIATE DIAPHRAGM.
- THE CONTRACTOR SHALL DRILL HOLES IN DIAPHRAGM OR CONNECTION PLATE AS NECESSARY TO ATTACH THE DIAPHRAGM TO THE BEAM.
- ALL MATERIALS AND CONSTRUCTION SHALL BE IN ACCORDANCE WITH THE LATEST EDITION OF THE NCDOT STANDARD SPECIFICATIONS FOR ROADS AND STRUCTURES.
- ALL STEEL IS TO BE SHOP CLEANED AND SHOP PRIMED WITH 2 COATS OF PRIMER ACCORDING TO PAINT SYSTEM #1 OF SECTION 442 OF THE STANDARD SPECIFICATIONS.
- UNLESS NOTED OTHERWISE, ALL STEEL ON THIS DRAWING SHALL MEET THE REQUIREMENTS OF AASHTO M270 (GRADE 50) AND ITS SUPPLEMENTARY LONGITUDINAL CHARPY V-NOTCH TEST REQUIREMENTS (FOR AASHTO M270 ZONE 1), ASTM A-572 (GR 50) OR A-588 (GR 50) STEEL MAY BE SUBSTITUTED AS LONG AS THE SUPPLEMENTARY REQUIREMENTS TO THE ABOVE AASHTO SPECS ARE MET.
- REMOVE PAINT OR ANY OTHER COATING AT THE LOCATION OF FIELD WELDS PRIOR TO WELDING.
- AFTER COMPLETION OF FIELD WELDING, THE WELDS AND AREAS WHERE PAINT HAS BEEN REMOVED OR DAMAGED SHALL BE REPAIRED AS PER ARTICLE 442-11 OF THE STANDARD SPECIFICATION.
- THE CONTRACTOR SHALL VERIFY THE BOLT SPACING PRIOR TO FABRICATION.
- FASTENERS SHALL BE 3/4" HIGH STRENGTH IN ACCORDANCE WITH STANDARD SPECIFICATION.
- EXISTING PLANS BEARING TO BEARING DISTANCE IS 44'-0". CONTRACTOR TO FIELD VERIFY DIMENSIONS.
- FOR FIELD MEASURING, SEE SPECIAL PROVISIONS.
- FOR PARTIAL REMOVAL OF EXISTING STRUCTURE 369, SEE SPECIAL PROVISIONS.

PROJECT NO. I-5889A
BUNCOMBE COUNTY
 BRIDGE NO. 369



STATE OF NORTH CAROLINA
 DEPARTMENT OF TRANSPORTATION
 RALEIGH
**REPLACEMENT BEAM
 DETAILS**

DRAWN BY: M.A. LEE DATE: 10/2017
 CHECKED BY: R. NELSON DATE: 10/2017

PLANS PREPARED BY:
Gannett Fleming
 Excellence Delivered As Promised

DOCUMENT NOT CONSIDERED FINAL UNLESS ALL SIGNATURES COMPLETED

REVISIONS						SHEET NO.
NO.	BY:	DATE:	NO.	BY:	DATE:	S-136
1			3			TOTAL SHEETS
2			4			208