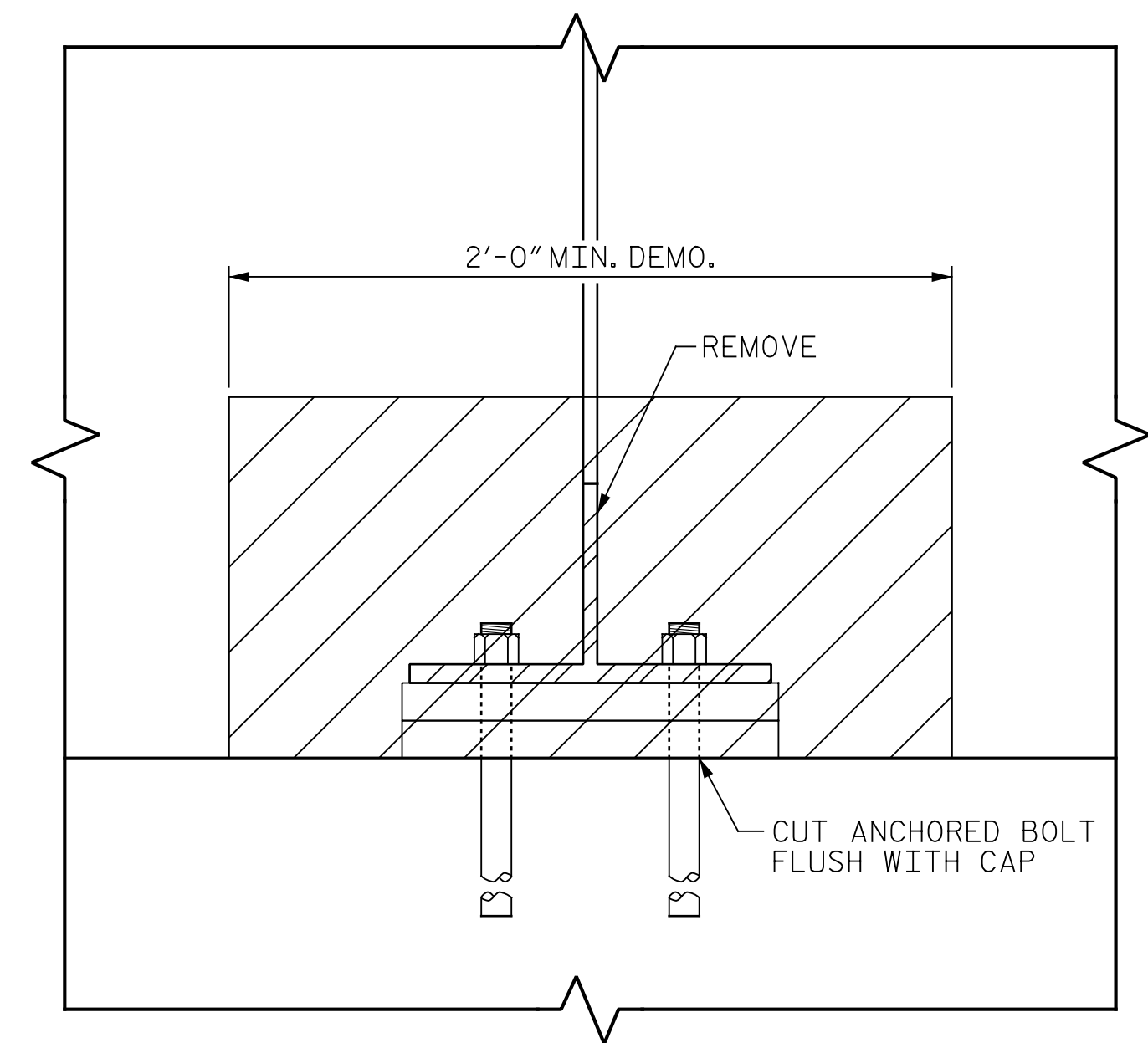
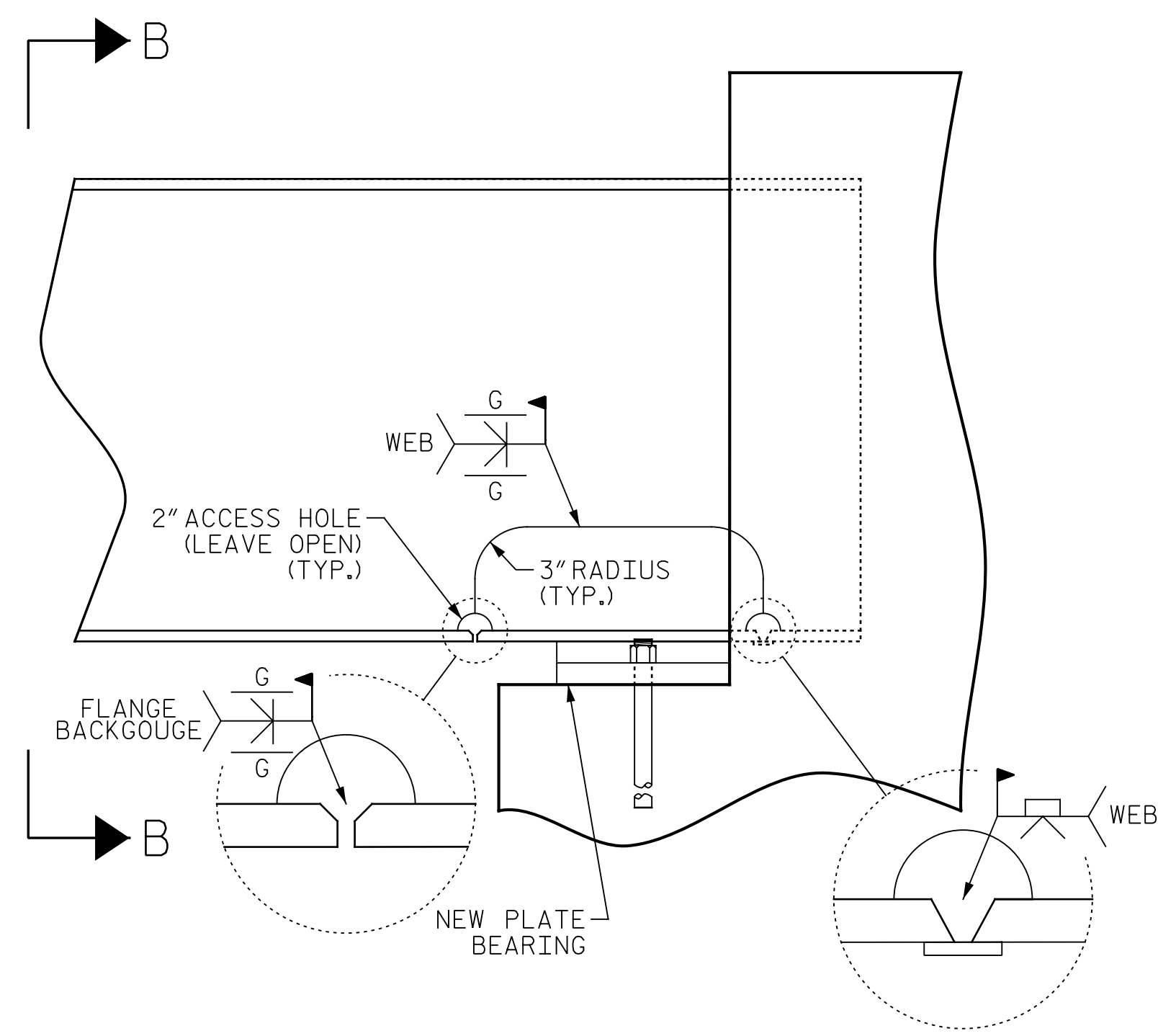


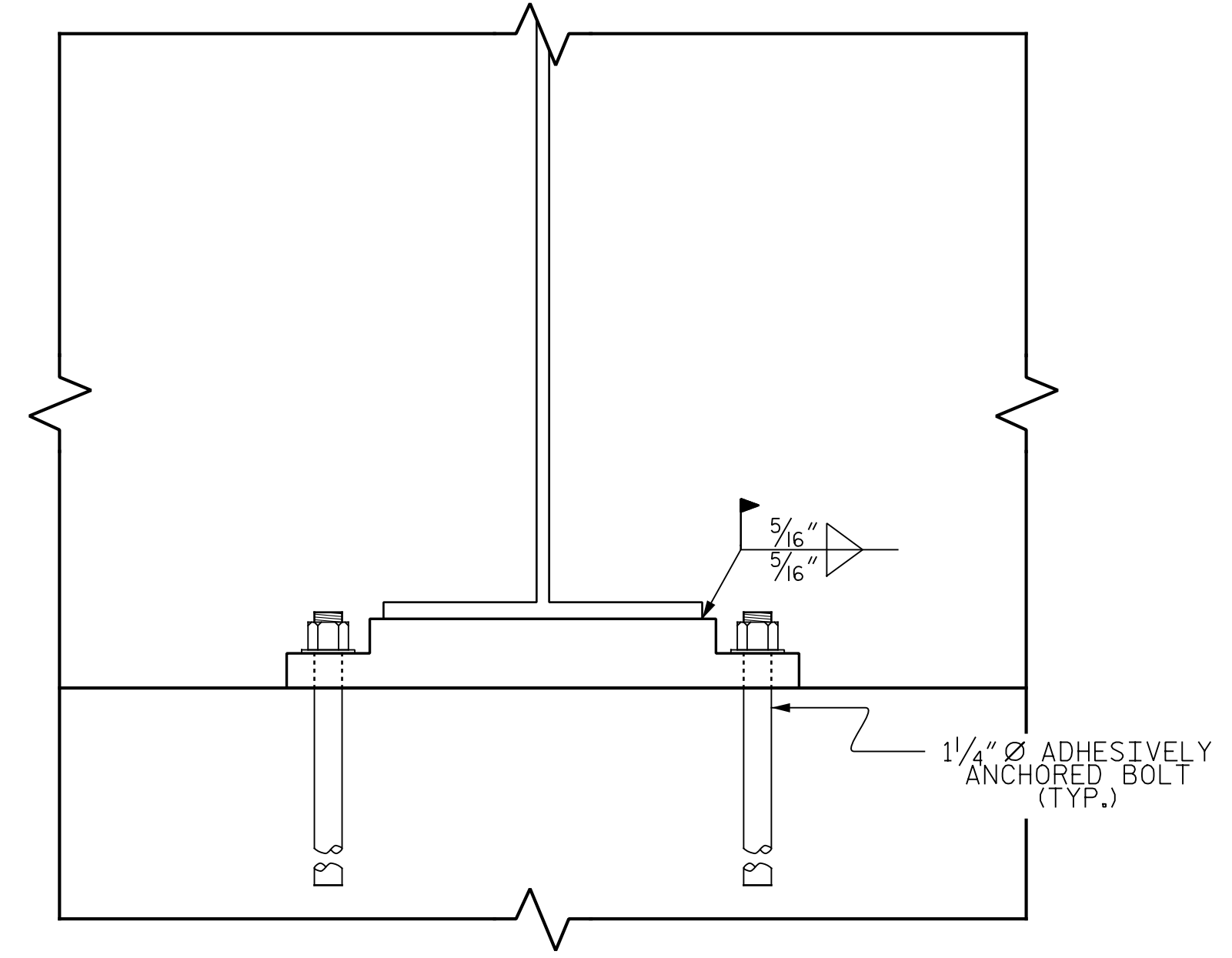
EXISTING
 ("BE" REPAIR)



SECTION A-A

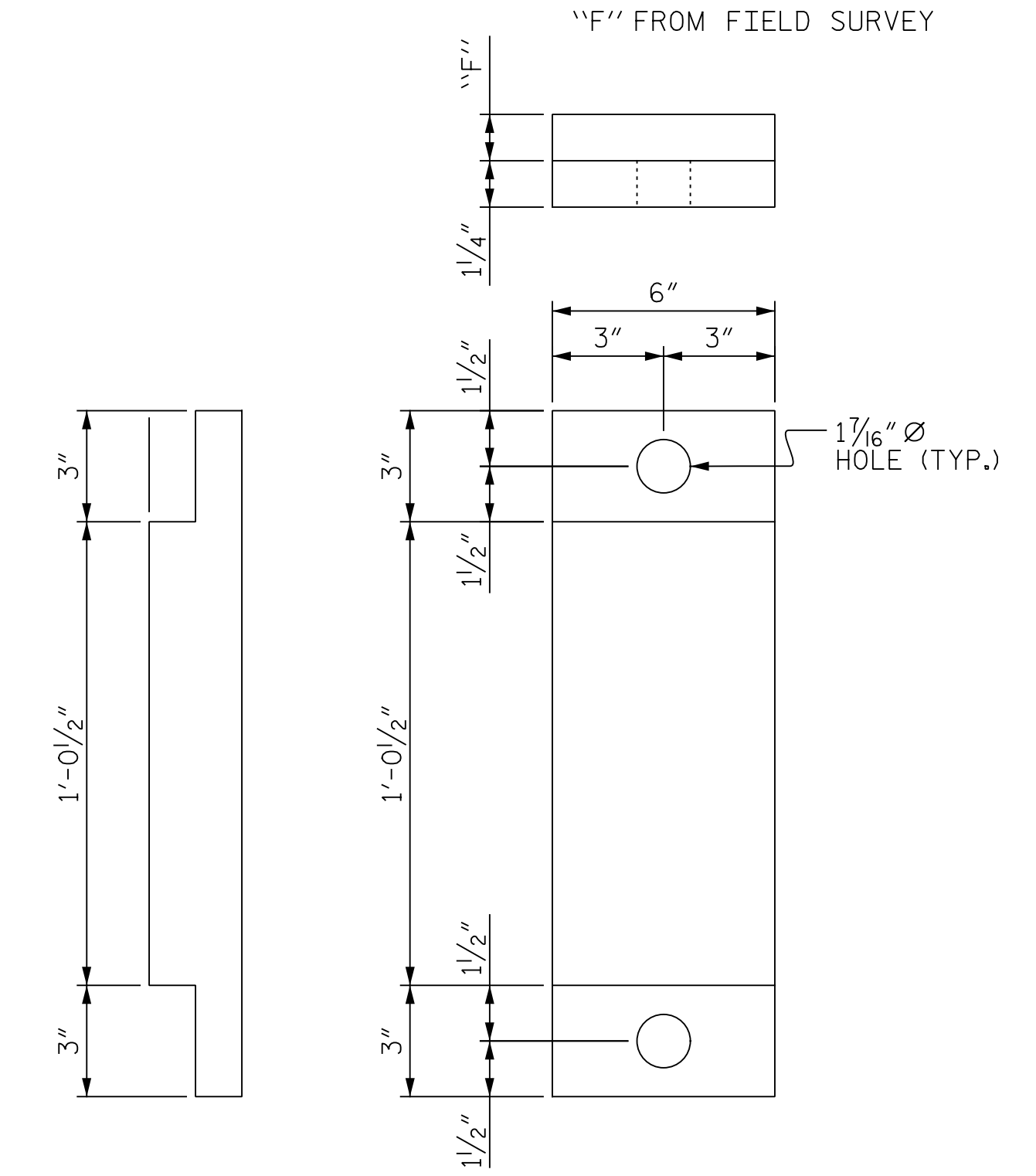


PROPOSED
 ("BE" REPAIR)



SECTION B-B

NOTES:
 FOR FIELD MEASURING, SEE SPECIAL PROVISIONS.
 BEARING PLATES, ANCHOR BOLTS, NUTS AND WASHERS SHALL BE GALVANIZED IN ACCORDANCE WITH THE STANDARD SPECIFICATIONS.
 FOR STEEL PLATE BEARING, SEE BEAM REPAIR SPECIAL PROVISIONS.
 THE ANCHOR BOLT EMBEDMENT DEPTH SHALL BE 9" OR THE DEPTH RECOMMENDED BY THE ADHESIVE MANUFACTURER FOR THE GIVEN YIELD LOAD, WHICHEVER DEPTH IS GREATER.
 THE 1/4" ANCHOR BOLTS SHALL BE INSTALLED USING AN ADHESIVE ANCHORING SYSTEM. THE YIELD LOAD FOR THE BOLTS IS 16KIPS.
 FIELD TESTING FOR THE ADHESIVE BONDING SYSTEM IS NOT REQUIRED.



STEEL PLATE BEARING DETAIL

PROJECT NO. I-5889A
BUNCOMBE COUNTY
 BRIDGE NO. 369

SHEET 3 OF 3



STATE OF NORTH CAROLINA
 DEPARTMENT OF TRANSPORTATION
 RALEIGH

BEAM END REPAIR DETAILS

DRAWN BY : M.A. LEE DATE : 10/2017
 CHECKED BY : R. NELSON DATE : 10/2017

PLANS PREPARED BY:
Gannett Fleming
 Excellence Delivered As Promised
 2610 Wycliff Road
 Suite 102
 Raleigh, NC 27607-3073
 (919) 420-7660
 NC Lic. No. F-0270

DOCUMENT NOT CONSIDERED FINAL UNLESS ALL SIGNATURES COMPLETED

REVISIONS						SHEET NO.
NO.	BY:	DATE:	NO.	BY:	DATE:	S-135
1			3			TOTAL SHEETS
2			4			208