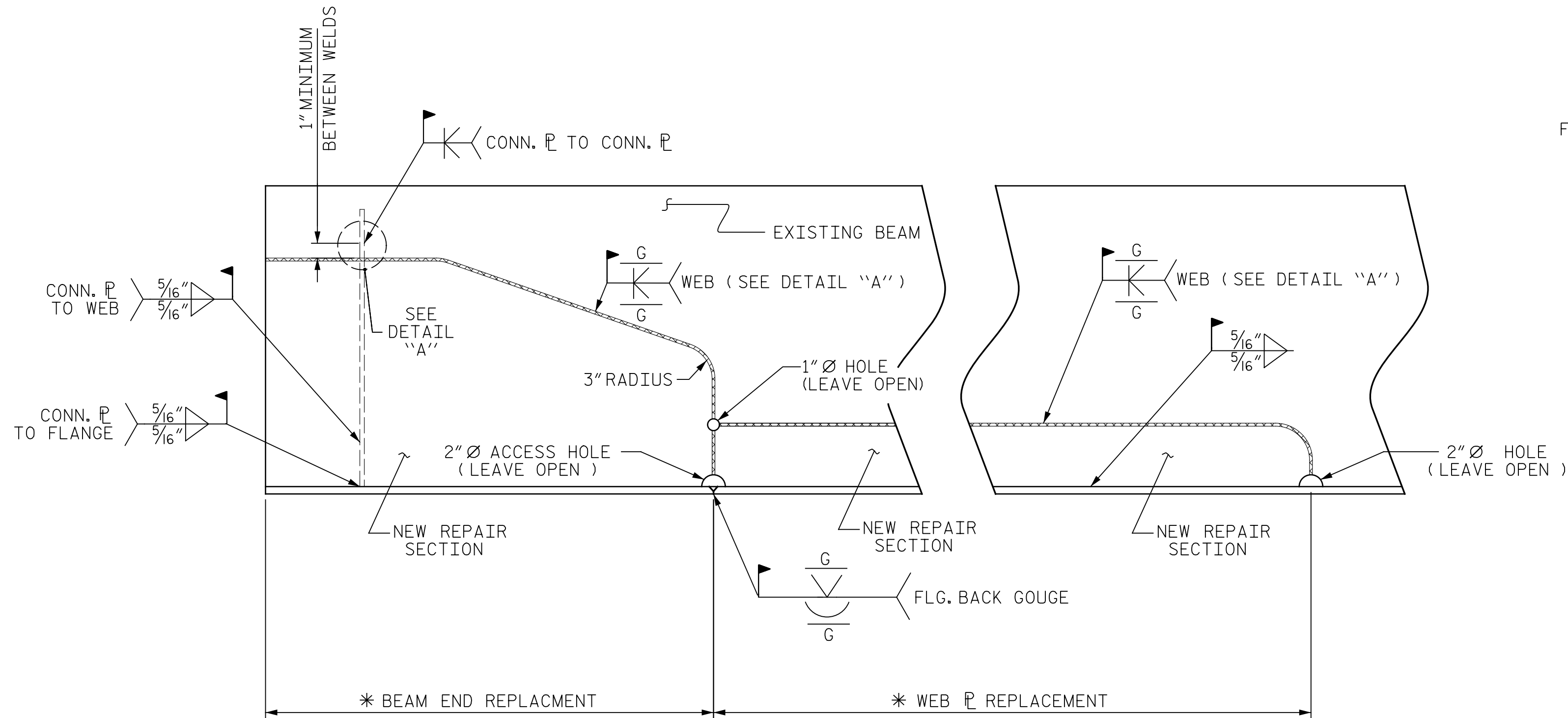
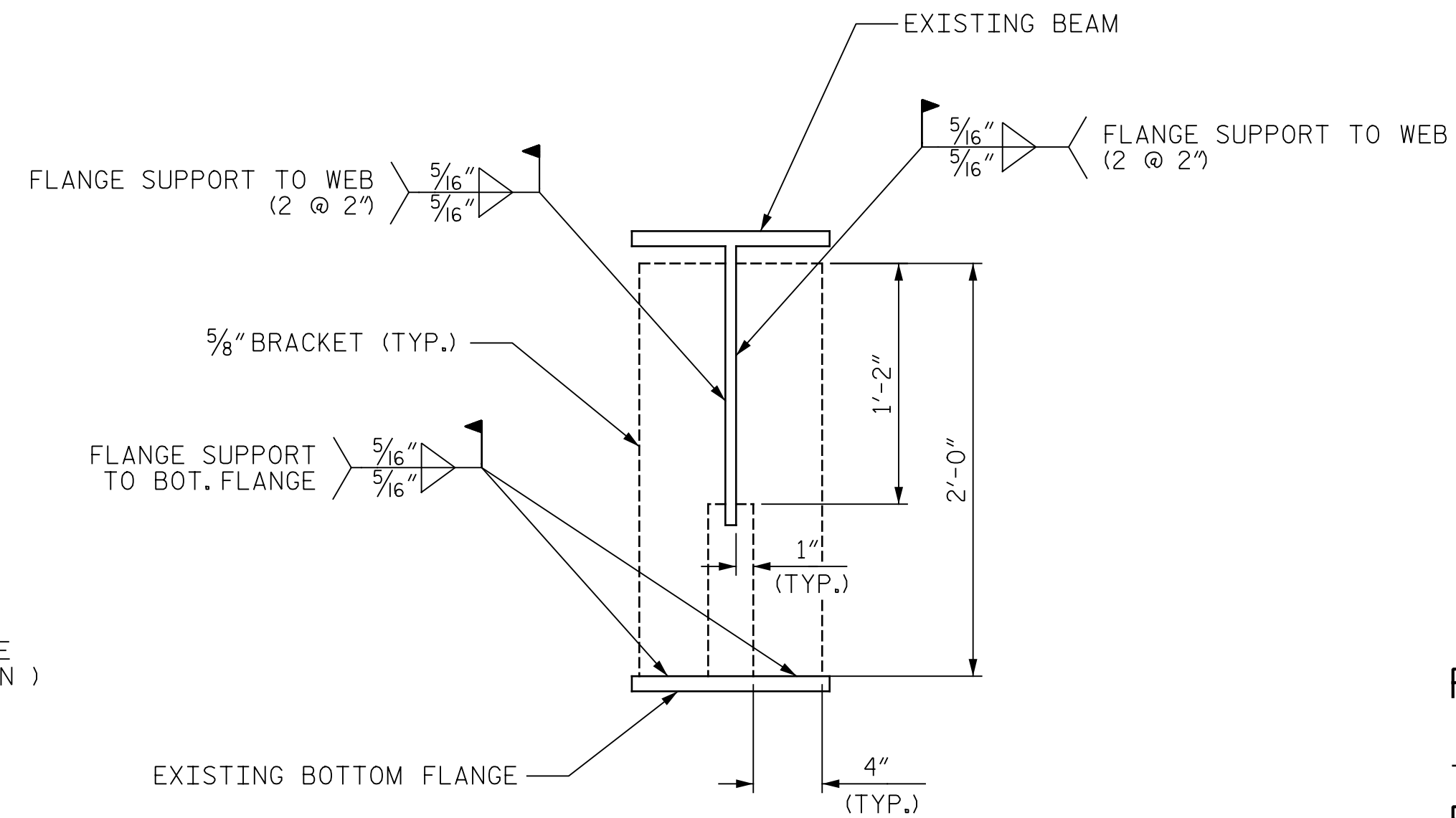


SECTION LOSS
BEAM END REPAIR
("BE" REPAIR)



SECTION LOSS
BEAM END REPAIR
("BE" REPAIR)

* REPAIR BEAM END REPLACEMENT PRIOR TO WEB REPLACEMENT



FLANGE SUPPORT BRACKET

NOTE:
INSTALL FLANGE SUPPORT BRACKET PRIOR TO MAKING WEB CUT
REMOVE FLANGE SUPPORT BRACKET AFTER NEW WEB HAS BEEN INSTALLED.
GRIND WELDS FLUSH PRIOR TO PAINTING.



PROJECT NO. I-5889A
BUNCOMBE COUNTY
BRIDGE NO. 369

SHEET 2 OF 3

STATE OF NORTH CAROLINA
DEPARTMENT OF TRANSPORTATION
RALEIGH

BEAM END
REPAIR DETAILS

DRAWN BY : J. BOYER DATE : 10/2017
CHECKED BY : R. NELSON DATE : 10/2017

PLANS PREPARED BY:
Gannett Fleming
Excellence Delivered As Promised
2610 Wycliff Road
Suite 102
Raleigh, NC 27607-3073
(919) 420-7660
NC Lic. No. F-0270

DOCUMENT NOT CONSIDERED
FINAL UNLESS ALL
SIGNATURES COMPLETED

REVISIONS						SHEET NO.
NO.	BY:	DATE:	NO.	BY:	DATE:	S-134
1			3			TOTAL SHEETS
2			4			208