

AS-BUILT REPAIR QUANTITY TABLE

REPAIRS TO BEAMS	QUANTITIES					
	ESTIMATE			ACTUAL		
	LBS.	LBS.	LBS.	LBS.	LBS.	LBS.
BEAM PLATED REPAIR						
	SPAN A	SPAN B	SPAN C	SPAN A	SPAN B	SPAN C
BEAM 1	500	500	500			
BEAM 8	500	500	500			

NOTES:
 REPAIR LOCATIONS AND ESTIMATED QUANTITIES ARE GIVEN WITH THE BEST INFORMATION AVAILABLE. IF ADDITIONAL REPAIRS NOT SHOWN ON THE DRAWINGS ARE DEEMED NECESSARY BY THE ENGINEER, THE ENGINEER WILL NOTE ON THE DRAWINGS THE APPROXIMATE LOCATIONS AND DESCRIPTION OF THE REPAIRS AND ADJUST THE ACTUAL QUANTITIES ENTERED INTO THE AS-BUILT REPAIR QUANTITY TABLE.

* FINAL REPAIR QUANTITIES WILL BE DETERMINED AFTER THE STONE VENEER IS REMOVED. QUANTITIES SHOWN IN TABLE ARE TAKEN PAY ITEMS FOR PRICING PURPOSES IN CASE DAMAGED AREAS ARE ENCOUNTERED.

COMPLETE BEAM REPAIRS, BEARING REPLACEMENTS, LMC-VES OVERLAY, SHOTCRETE REPAIRS AND REPAINTING OF STRUCTURE PRIOR TO RE-INSTALLING VENEER.

FOR INSTALLATION OF VENEER ON OUTSIDE EDGE OF DECK AND PARAPET, SEE STONE VENEER BENT DETAILS

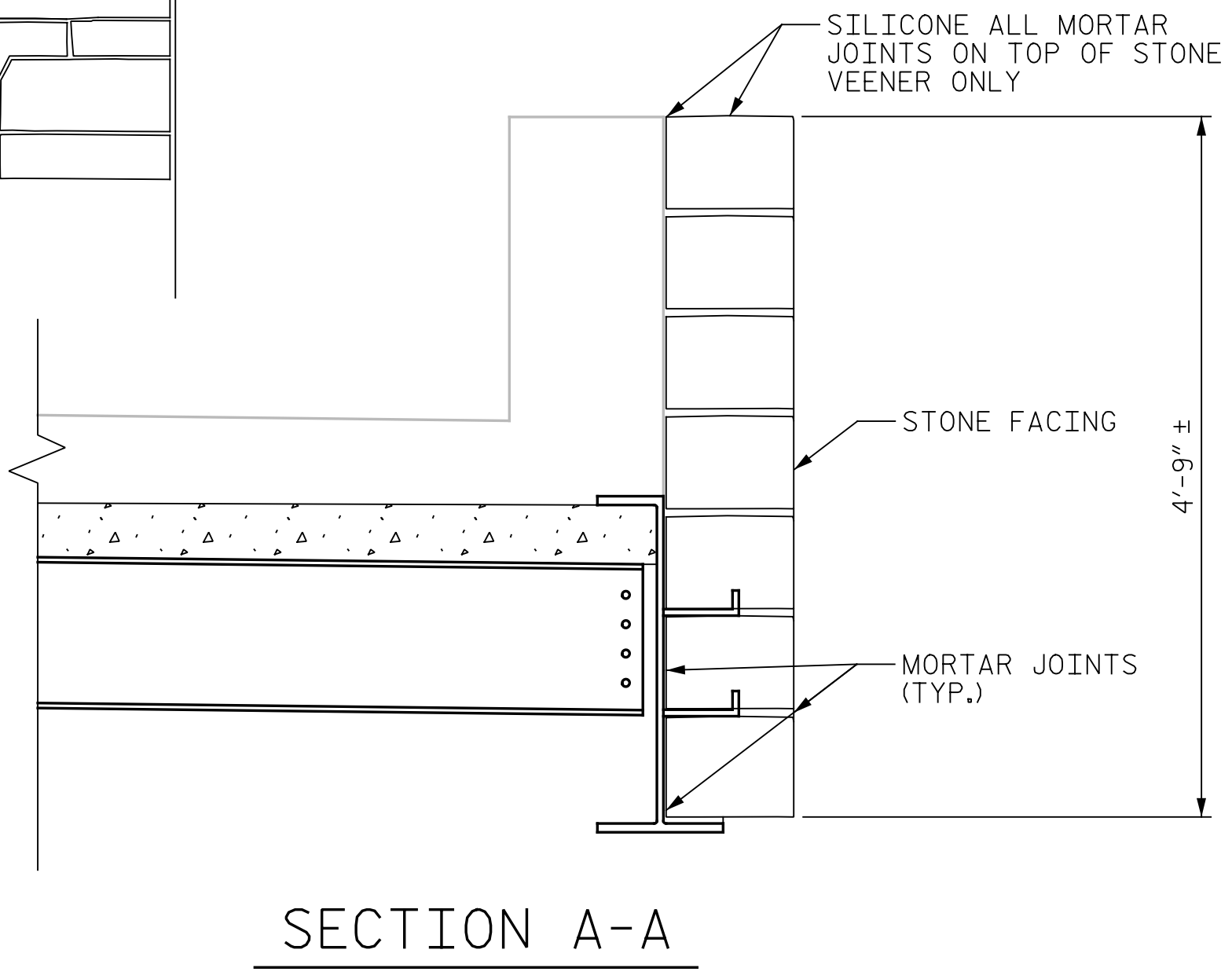
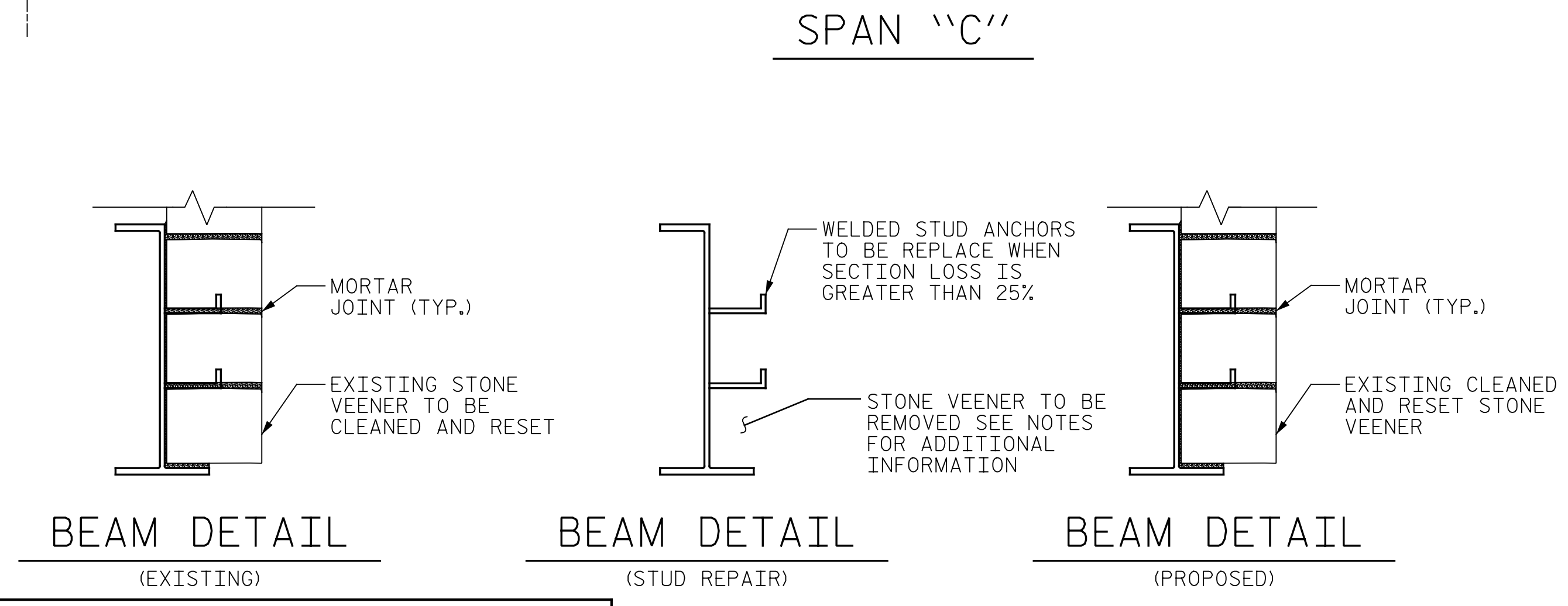
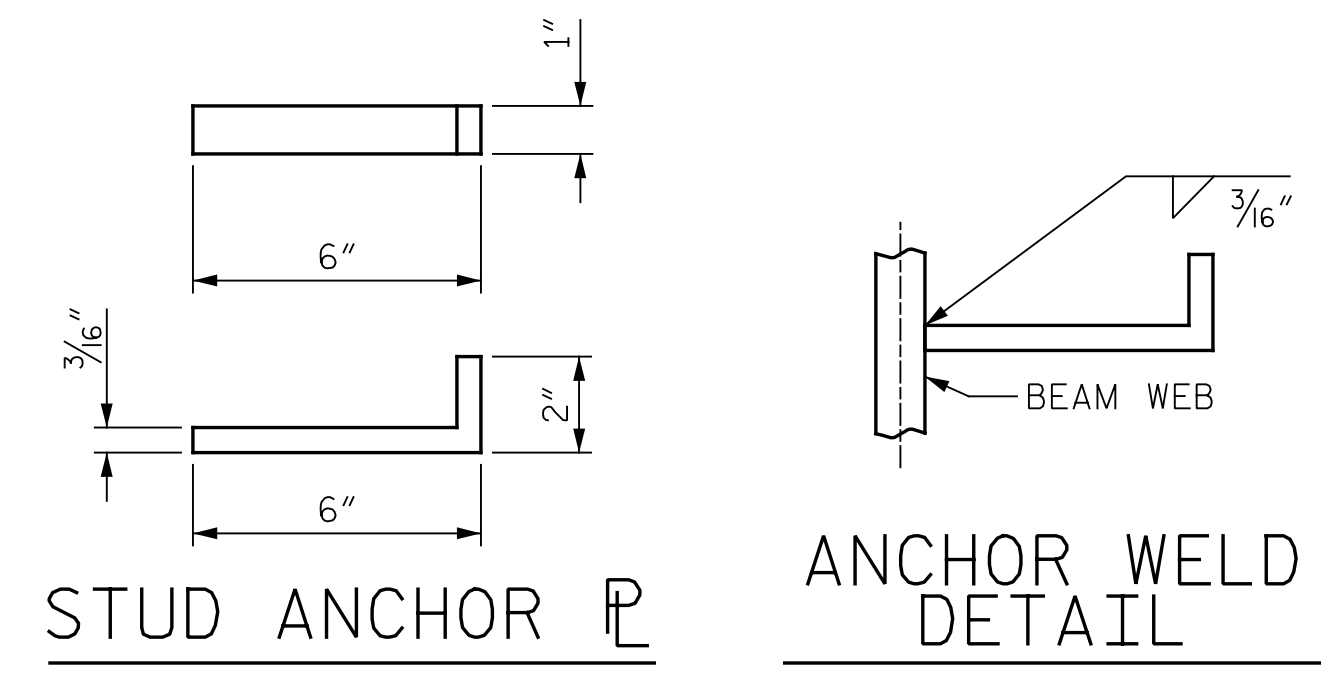
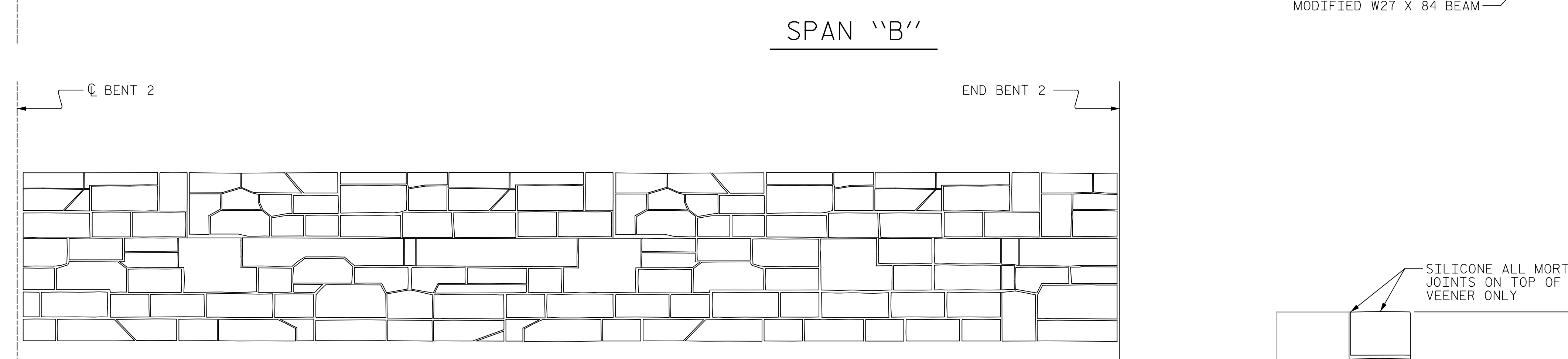
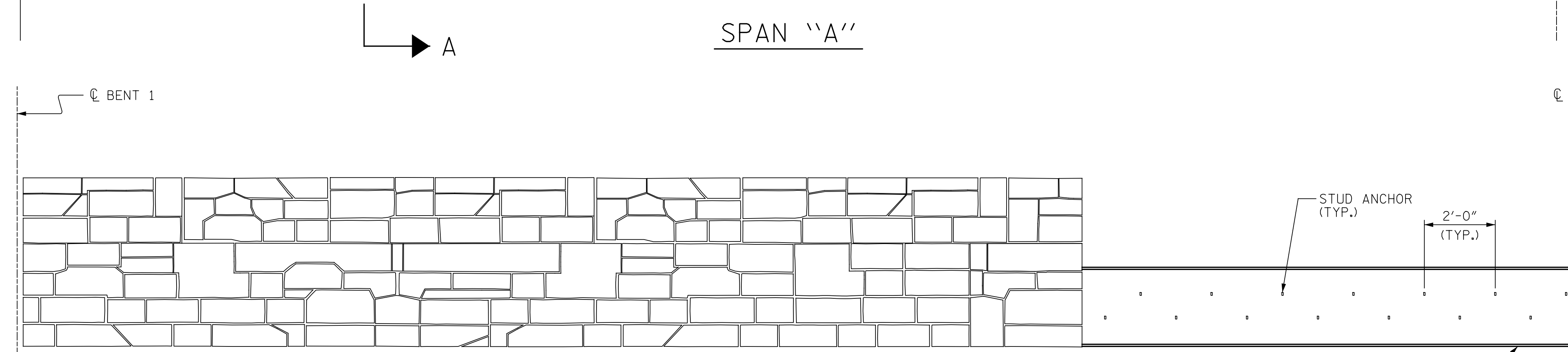
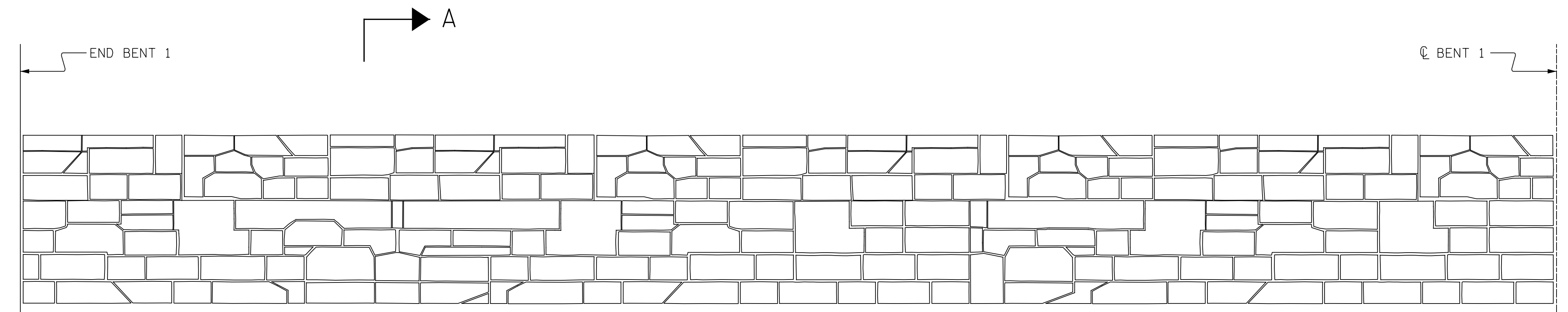
FOR ANCHORED STONE VENEER, SEE SPECIAL PROVISIONS.

FOR PAINTING EXISTING STRUCTURE, SEE SPECIAL PROVISIONS.

FOR BEAM REPAIRS, SEE SPECIAL PROVISIONS.

QUANTITY TABLE

ANCHORED VENEER	SF
LEFT SIDE	575
RIGHT SIDE	575



PROJECT NO. I-5889A
BUNCOMBE COUNTY
 BRIDGE NO. 366



STATE OF NORTH CAROLINA
 DEPARTMENT OF TRANSPORTATION
 RALEIGH

STONE VENEER BEAM DETAILS

DRAWN BY: M.A. LEE DATE: 10/2017
 CHECKED BY: R. NELSON DATE: 10/2017

PLANS PREPARED BY:
Gannett Fleming
 Excellence Delivered As Promised

2610 Wycliff Road
 Suite 102
 Raleigh, NC 27607-3073
 (919) 420-7660
 NC Lic. No. F-0270

DOCUMENT NOT CONSIDERED FINAL UNLESS ALL SIGNATURES COMPLETED

REVISIONS						SHEET NO.
NO.	BY:	DATE:	NO.	BY:	DATE:	S-118
1			3			TOTAL SHEETS
2			4			208