



**LOCATION SKETCH**

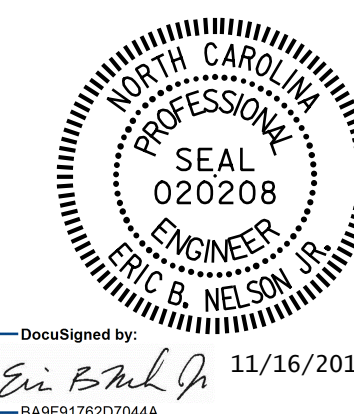
INFORMATION INDICATED ON THE LOCATION SKETCH SHALL BE CONSIDERED GENERAL INFORMATION ONLY. CONTRACTOR SHALL CONFIRM, THROUGH OTHER SOURCES, SPECIFIC INFORMATION REGARDING THE BRIDGES, ROADWAYS, UTILITIES, THE SURROUNDING AREA, AND ANY OTHER ASPECTS THAT MAY BE NECESSARY TO PERFORM AND COMPLETE THE PROJECT.

**GENERAL NOTES**

- EXISTING DIMENSIONS AND BRIDGE CONDITION ARE FROM BEST INFORMATION AVAILABLE. THE CONTRACTOR SHALL FIELD VERIFY THE INFORMATION SHOWN ON THE PLANS AND NOTIFY THE ENGINEER IF ACTUAL DIMENSIONS AND CONDITIONS DIFFER.
- FOR SUBMITTAL OF WORKING DRAWINGS, SEE SPECIAL PROVISIONS.
- FOR FALSEWORK AND FORMWORK, SEE SPECIAL PROVISIONS.
- FOR CRANE SAFETY, SEE SPECIAL PROVISIONS.
- FOR GROUT FOR STRUCTURES, SEE SPECIAL PROVISIONS.
- FOR UNDER STRUCTURE WORK PLATFORM, SEE SPECIAL PROVISIONS.
- FOR BEAM REPAIR, SEE SPECIAL PROVISIONS.
- IT IS THE CONTRACTOR'S RESPONSIBILITY TO FOLLOW ALL STATE AND FEDERAL SAFETY REQUIREMENTS.
- FOR CONTROL OF TRAFFIC AND LIMITS ON PHASING OF CONSTRUCTION, SEE TRANSPORTATION MANAGEMENT PLANS.
- FOR ZONE PAINTING OF EXISTING STRUCTURE, SEE SPECIAL PROVISIONS.
- FOR PAINTING CONTAINMENT FOR ZONE PAINTING OF EXISTING STRUCTURE, SEE SPECIAL PROVISIONS.
- FOR POLLUTION CONTROL, SEE ZONE PAINTING OF EXISTING STRUCTURE SPECIAL PROVISION.
- FOR SHOTCRETE REPAIRS, SEE SPECIAL PROVISIONS.

PROJECT NO. I-5889A  
BUNCOMBE COUNTY  
 BRIDGE NO. 344

SHEET 2 OF 2



STATE OF NORTH CAROLINA  
 DEPARTMENT OF TRANSPORTATION  
 RALEIGH  
 GENERAL DRAWING  
 BRIDGE #344 ON I-40 EBL  
 OVER SR 3620 & HOMINY CREEK

DRAWN BY : D.PETRY DATE : 9/2017  
 CHECKED BY : R.F. WERTMAN DATE : 10/2017

PLANS PREPARED BY:  
**Gannett Fleming**  
 Excellence Delivered *As Promised*  
 2610 Wycliff Road  
 Suite 102  
 Raleigh, NC 27607-3073  
 (919) 420-7660  
 NC Lic. No. F-0270

DOCUMENT NOT CONSIDERED FINAL UNLESS ALL SIGNATURES COMPLETED

REVISIONS						SHEET NO.
NO.	BY:	DATE:	NO.	BY:	DATE:	S-23
1			3			TOTAL 208
2			4			-