

**This electronic collection of documents is provided
for the convenience of the user
and is Not a Certified Document –**

**The documents contained herein were originally issued
and sealed by the individuals whose names and license
numbers appear on each page, on the dates appearing
with their signature on that page.**

**This file or an individual page
shall not be considered a certified document.**

09/08/99
 11/16/2017
 N:\Projects\2011\1050_MPKwyFinal\Design\Utilities\Engineering\UBO\Proj\U5315_ufl_tsh_U001.dgn
 mlawson

CARY PROJECT: ST 1123A220 TIP PROJECT: U-5315 A&B

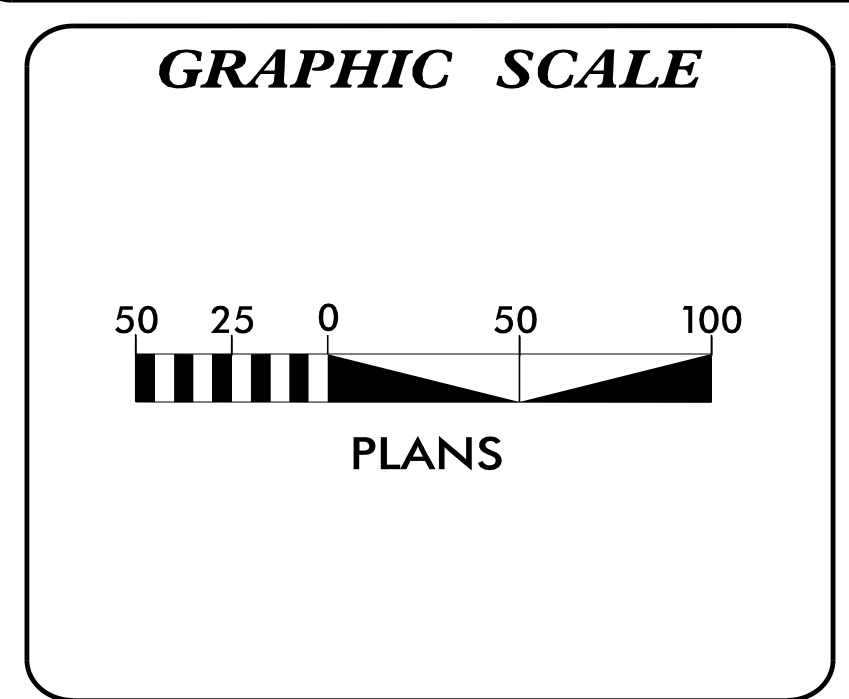
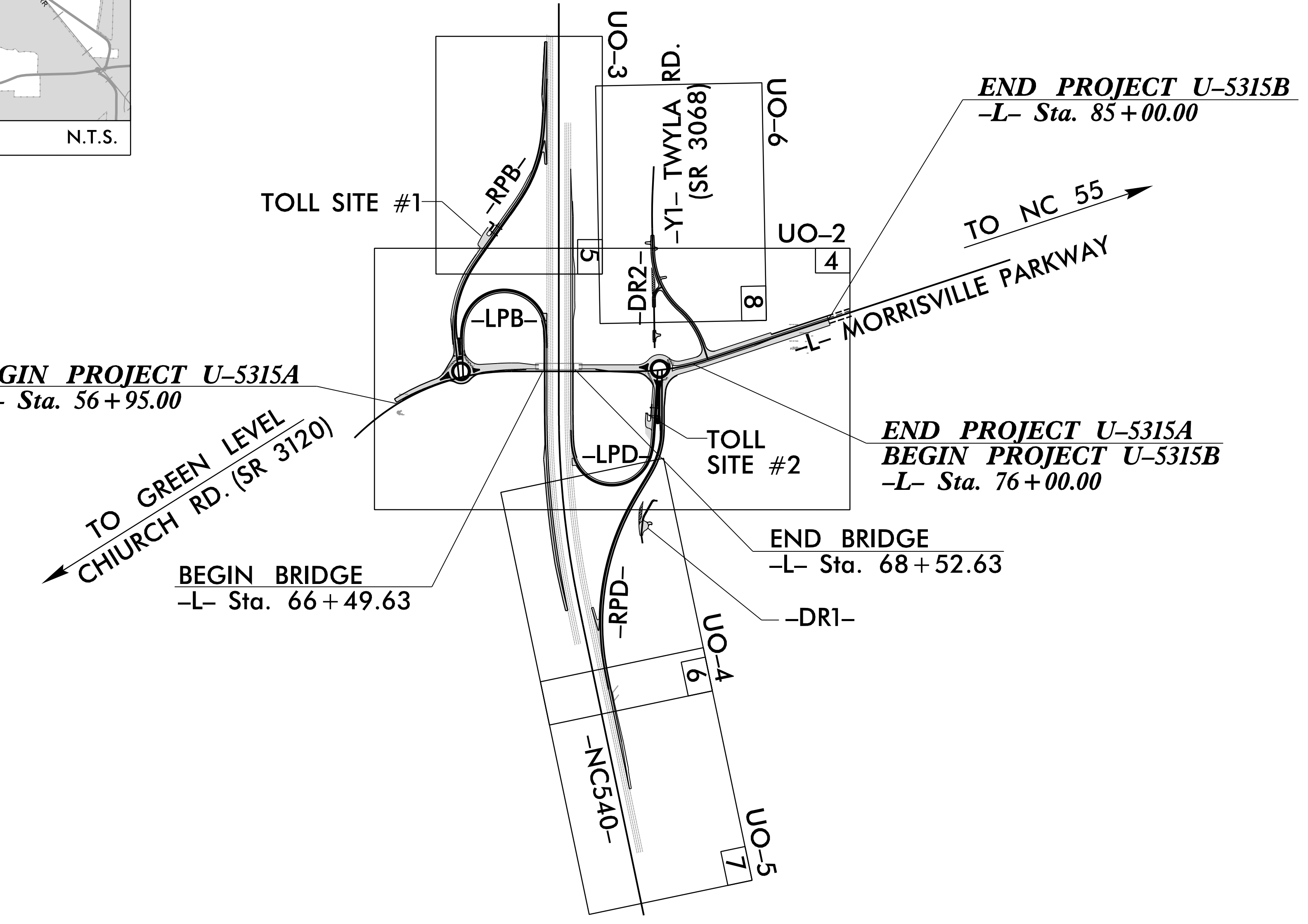
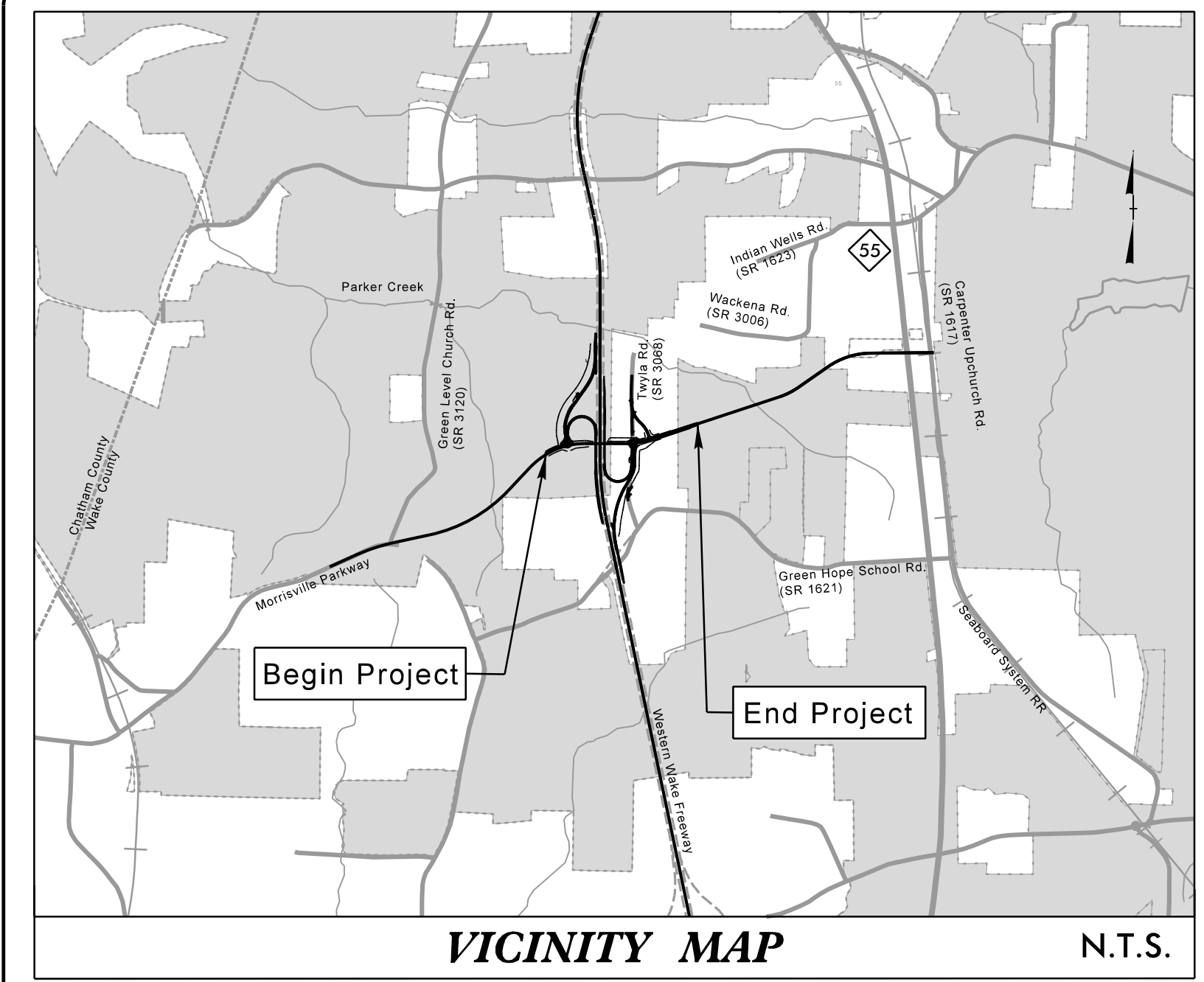
STATE OF NORTH CAROLINA
DIVISION OF HIGHWAYS

**UTILITIES BY OTHERS PLANS
WAKE COUNTY**

LOCATION: MORRISVILLE PARKWAY EXTENSION AND NC 540 INTERCHANGE
FROM SR 1625 (GREEN LEVEL CHURCH RD.) TO NC 55
TYPE OF WORK: AERIAL POWER, AERIAL FIBER OPTIC, TELEPHONE,
AND CATV

T.I.P. NO.	SHEET NO.
U-5315A/U5315B	UO-1

NOTE:
 ALL UTILITY WORK SHOWN ON THIS SHEET IS DONE BY OTHERS.
 NO PAYMENT WILL BE MADE TO THE CONTRACTOR FOR UTILITY WORK SHOWN ON THIS SHEET.



INDEX OF SHEETS

SHEET NO.:	DESCRIPTION:
UO-1	TITLE SHEET
UO-02 THRU UO-06	UBO PLAN SHEETS

UTILITY OWNERS WITH CONFLICTS

	(1) DUKE ENERGY - POWER (TRANS)
	(2) DUKE ENERGY - POWER (DIST)
	(3) AT&T - TELECOMMUNICATIONS AND FIBER OPTIC
	(4) SPECTRUM - CATV

PREPARED IN THE OFFICE OF:

PLANS PREPARED BY:

RK&K

RUMMEL, KLEPPER & KAHL, LLP
 900 RIDGEFIELD DRIVE, SUITE 350
 RALEIGH, NORTH CAROLINA 27609
 NC LICENSE NO. F-0112
 1-888-521-4455 OR 919-878-9560

HOWARD WOODALL, P.E. UTILITY PROJECT MANAGER
 MARK LAWSON PROJECT UTILITY COORDINATOR
 MARK LAWSON PROJECT UTILITY CADD

**DIVISION OF HIGHWAYS
UTILITIES UNIT**
 1555 MAIL SERVICES CENTER
 RALEIGH, NC 27699-1555
 PHONE (919) 707-6690
 FAX (919) 250-4151

DONNA JACKSON, P.E. UTILITIES REGIONAL ENGINEER
 DONNA JACKSON, P.E. UTILITIES ENGINEER
 AMY DUPREE UTILITIES AREA COORDINATOR
 TODD LAPHAM S.R. UTILITIES COORDINATOR

UTILITIES BY OTHERS

NOTE: UNLESS NOTED OTHERWISE, ALL UTILITY WORK SHOWN ON THIS SHEET WILL BE DONE BY OTHERS. NO PAYMENT WILL BE MADE TO THE CONTRACTOR FOR UTILITY WORK SHOWN ON THIS SHEET.

LENNAR CAROLINAS LLC
 PLY 073320365
 DB H788 PG 028
 BM 2004 PG 028
 END CONSTRUCTION U-5315A
 -L- POT Sta. 85+30.00

LENNAR CAROLINAS LLC
 PLY 073320365
 DB H788 PG 028
 BM 2004 PG 028
 END PROJECT U-5315A
 -L- POT Sta. 85+00.00

LENNAR CAROLINAS LLC
 PLY 073320365
 DB H788 PG 028
 BM 2004 PG 028
 END CONSTRUCTION U-5315A
 -L- POT Sta. 85+00.00

LENNAR CAROLINAS LLC
 PLY 073320365
 DB H788 PG 028
 BM 2004 PG 028
 END CONSTRUCTION U-5315A
 -L- POT Sta. 85+00.00

LENNAR CAROLINAS LLC
 PLY 073320365
 DB H788 PG 028
 BM 2004 PG 028
 END CONSTRUCTION U-5315A
 -L- POT Sta. 85+00.00

LENNAR CAROLINAS LLC
 PLY 073320365
 DB H788 PG 028
 BM 2004 PG 028
 END CONSTRUCTION U-5315A
 -L- POT Sta. 85+00.00

LENNAR CAROLINAS LLC
 PLY 073320365
 DB H788 PG 028
 BM 2004 PG 028
 END CONSTRUCTION U-5315A
 -L- POT Sta. 85+00.00

LENNAR CAROLINAS LLC
 PLY 073320365
 DB H788 PG 028
 BM 2004 PG 028
 END CONSTRUCTION U-5315A
 -L- POT Sta. 85+00.00

LENNAR CAROLINAS LLC
 PLY 073320365
 DB H788 PG 028
 BM 2004 PG 028
 END CONSTRUCTION U-5315A
 -L- POT Sta. 85+00.00

LENNAR CAROLINAS LLC
 PLY 073320365
 DB H788 PG 028
 BM 2004 PG 028
 END CONSTRUCTION U-5315A
 -L- POT Sta. 85+00.00

LENNAR CAROLINAS LLC
 PLY 073320365
 DB H788 PG 028
 BM 2004 PG 028
 END CONSTRUCTION U-5315A
 -L- POT Sta. 85+00.00

LENNAR CAROLINAS LLC
 PLY 073320365
 DB H788 PG 028
 BM 2004 PG 028
 END CONSTRUCTION U-5315A
 -L- POT Sta. 85+00.00

LENNAR CAROLINAS LLC
 PLY 073320365
 DB H788 PG 028
 BM 2004 PG 028
 END CONSTRUCTION U-5315A
 -L- POT Sta. 85+00.00

LENNAR CAROLINAS LLC
 PLY 073320365
 DB H788 PG 028
 BM 2004 PG 028
 END CONSTRUCTION U-5315A
 -L- POT Sta. 85+00.00

LENNAR CAROLINAS LLC
 PLY 073320365
 DB H788 PG 028
 BM 2004 PG 028
 END CONSTRUCTION U-5315A
 -L- POT Sta. 85+00.00

LENNAR CAROLINAS LLC
 PLY 073320365
 DB H788 PG 028
 BM 2004 PG 028
 END CONSTRUCTION U-5315A
 -L- POT Sta. 85+00.00

LENNAR CAROLINAS LLC
 PLY 073320365
 DB H788 PG 028
 BM 2004 PG 028
 END CONSTRUCTION U-5315A
 -L- POT Sta. 85+00.00

LENNAR CAROLINAS LLC
 PLY 073320365
 DB H788 PG 028
 BM 2004 PG 028
 END CONSTRUCTION U-5315A
 -L- POT Sta. 85+00.00

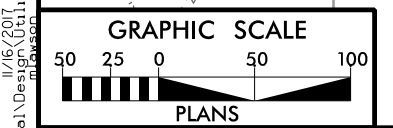
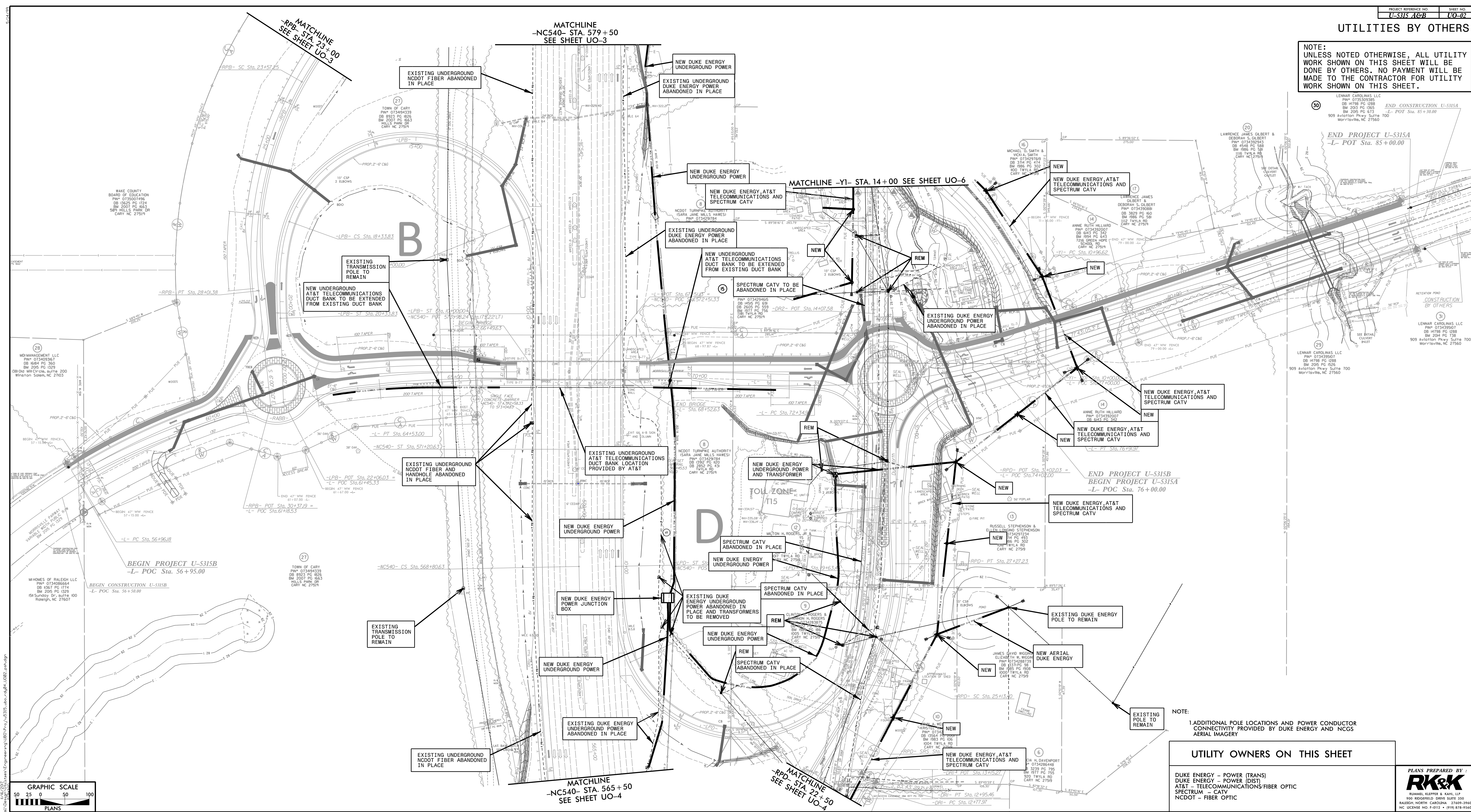
LENNAR CAROLINAS LLC
 PLY 073320365
 DB H788 PG 028
 BM 2004 PG 028
 END CONSTRUCTION U-5315A
 -L- POT Sta. 85+00.00

LENNAR CAROLINAS LLC
 PLY 073320365
 DB H788 PG 028
 BM 2004 PG 028
 END CONSTRUCTION U-5315A
 -L- POT Sta. 85+00.00

LENNAR CAROLINAS LLC
 PLY 073320365
 DB H788 PG 028
 BM 2004 PG 028
 END CONSTRUCTION U-5315A
 -L- POT Sta. 85+00.00

LENNAR CAROLINAS LLC
 PLY 073320365
 DB H788 PG 028
 BM 2004 PG 028
 END CONSTRUCTION U-5315A
 -L- POT Sta. 85+00.00

LENNAR CAROLINAS LLC
 PLY 073320365
 DB H788 PG 028
 BM 2004 PG 028
 END CONSTRUCTION U-5315A
 -L- POT Sta. 85+00.00



NOTE: 1. ADDITIONAL POLE LOCATIONS AND POWER CONDUCTOR CONNECTIVITY PROVIDED BY DUK ENERGY AND NCGS AERIAL IMAGERY

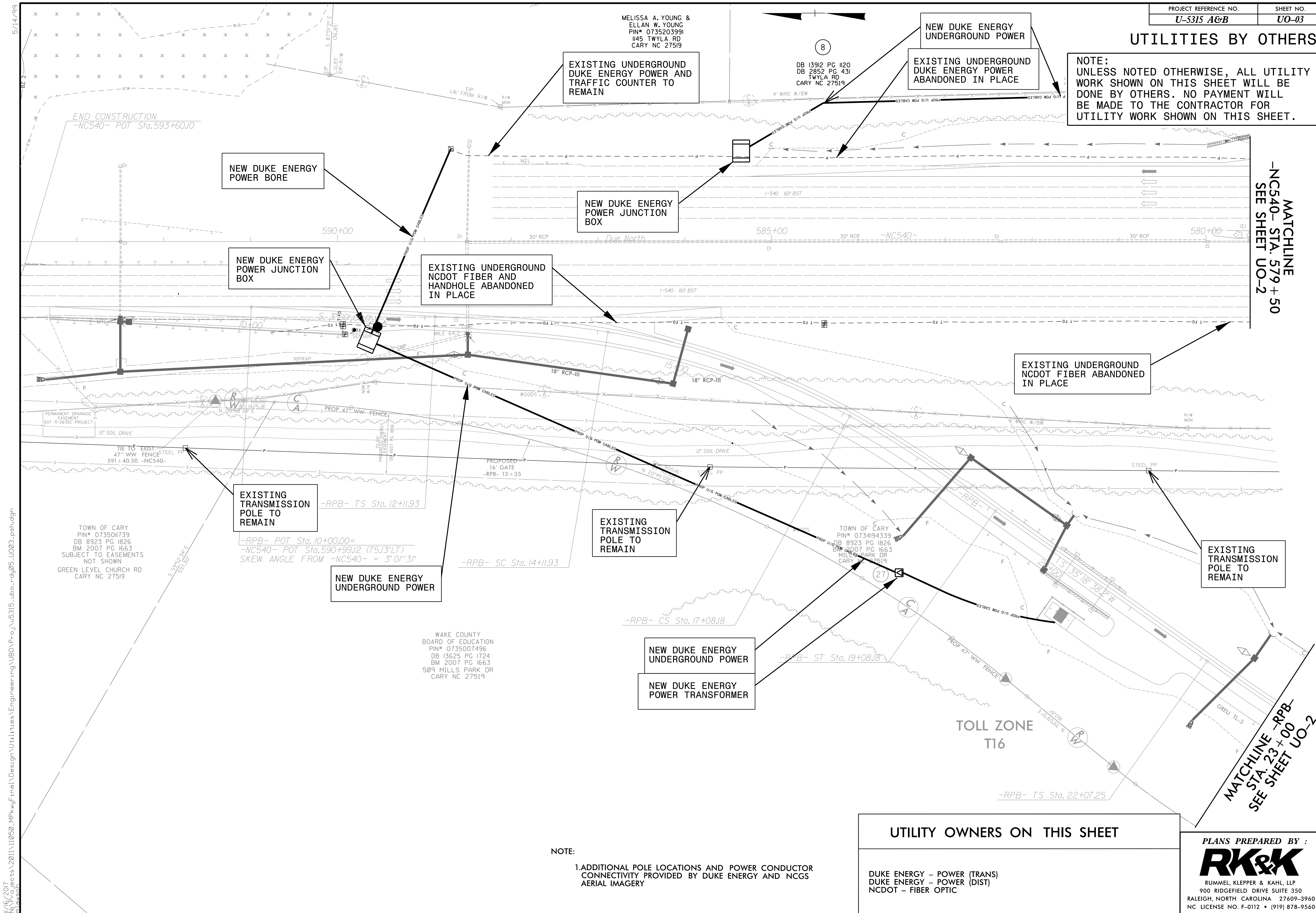
UTILITY OWNERS ON THIS SHEET

- DUKE ENERGY - POWER (TRANS)
- DUKE ENERGY - POWER (DIST)
- AT&T - TELECOMMUNICATIONS FIBER OPTIC
- SPECTRUM - CATV
- NCDOT - FIBER OPTIC

PLANS PREPARED BY:
RK&K
 RONNIE KLEPPER & DAVID LIP
 909 RIDGEFIELD DRIVE SUITE 350
 RALEIGH, NORTH CAROLINA 27609-3960
 NC LICENSE NO. P-0112 - 0198 878-9540

UTILITIES BY OTHERS

NOTE:
UNLESS NOTED OTHERWISE, ALL UTILITY WORK SHOWN ON THIS SHEET WILL BE DONE BY OTHERS. NO PAYMENT WILL BE MADE TO THE CONTRACTOR FOR UTILITY WORK SHOWN ON THIS SHEET.



NOTE:
1. ADDITIONAL POLE LOCATIONS AND POWER CONDUCTOR CONNECTIVITY PROVIDED BY DUKE ENERGY AND NCGS AERIAL IMAGERY

UTILITY OWNERS ON THIS SHEET	
DUKE ENERGY - POWER (TRANS)	
DUKE ENERGY - POWER (DIST)	
NCDOT - FIBER OPTIC	

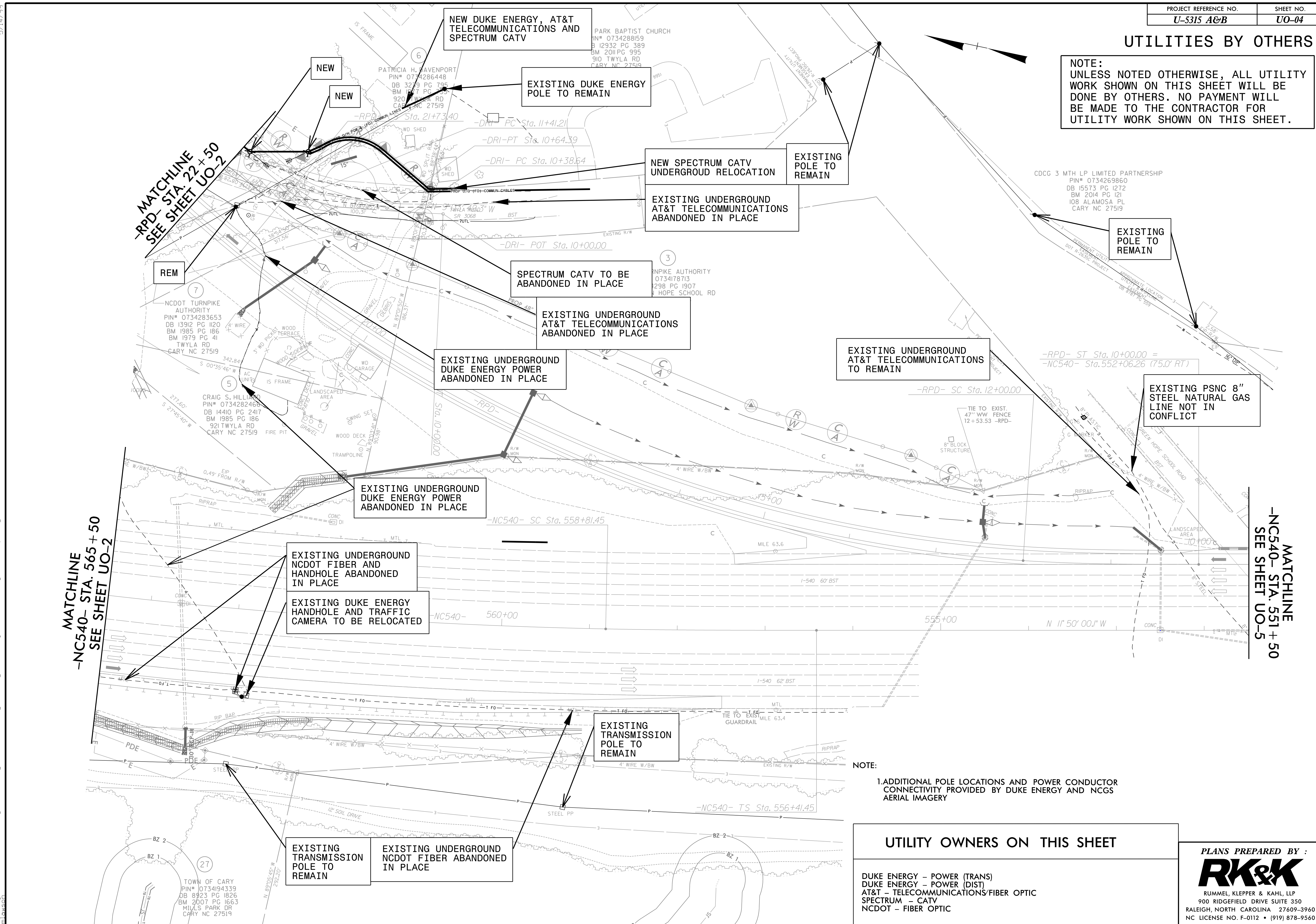
PLANS PREPARED BY:
RK&K
RUMMEL, KLEPPER & KAHL, LLP
900 RIDGEFIELD DRIVE SUITE 350
RALEIGH, NORTH CAROLINA 27609-3960
NC LICENSE NO. F-0112 • (919) 878-9560

N:\Projects\2011\11050_MPK\w\final\Design\Ut\11\tees\Engineering\UB0\Proj\U5315_uo.rdj\05_U003_psh.dgn
 1/16/2017 11:05:00 AM

5/14/99

UTILITIES BY OTHERS

NOTE:
UNLESS NOTED OTHERWISE, ALL UTILITY WORK SHOWN ON THIS SHEET WILL BE DONE BY OTHERS. NO PAYMENT WILL BE MADE TO THE CONTRACTOR FOR UTILITY WORK SHOWN ON THIS SHEET.



NOTE:
1. ADDITIONAL POLE LOCATIONS AND POWER CONDUCTOR CONNECTIVITY PROVIDED BY DUKE ENERGY AND NCGS AERIAL IMAGERY

UTILITY OWNERS ON THIS SHEET	
DUKE ENERGY - POWER (TRANS)	
DUKE ENERGY - POWER (DIST)	
AT&T - TELECOMMUNICATIONS/FIBER OPTIC	
SPECTRUM - CATV	
NCDOT - FIBER OPTIC	

PLANS PREPARED BY:
RK&K
RUMMEL, KLEPPER & KAHL, LLP
900 RIDGEFIELD DRIVE SUITE 350
RALEIGH, NORTH CAROLINA 27609-3960
NC LICENSE NO. F-0112 • (919) 878-9560

5/14/99
N:\Projects\2011\11050_MPK\w\l\Design\Uti\11050_U04\U04.dgn
1/16/2017 11:05:00 AM

UTILITIES BY OTHERS

NOTE:
 UNLESS NOTED OTHERWISE, ALL UTILITY WORK SHOWN ON THIS SHEET WILL BE DONE BY OTHERS. NO PAYMENT WILL BE MADE TO THE CONTRACTOR FOR UTILITY WORK SHOWN ON THIS SHEET.

CDCG 3 MTH LP LIMITED PARTNERSHIP
 PIN# 0734269860
 DB 15573 PG 1272
 BM 2014 PG 121
 108 ALAMOSA PL
 CARY NC 27519

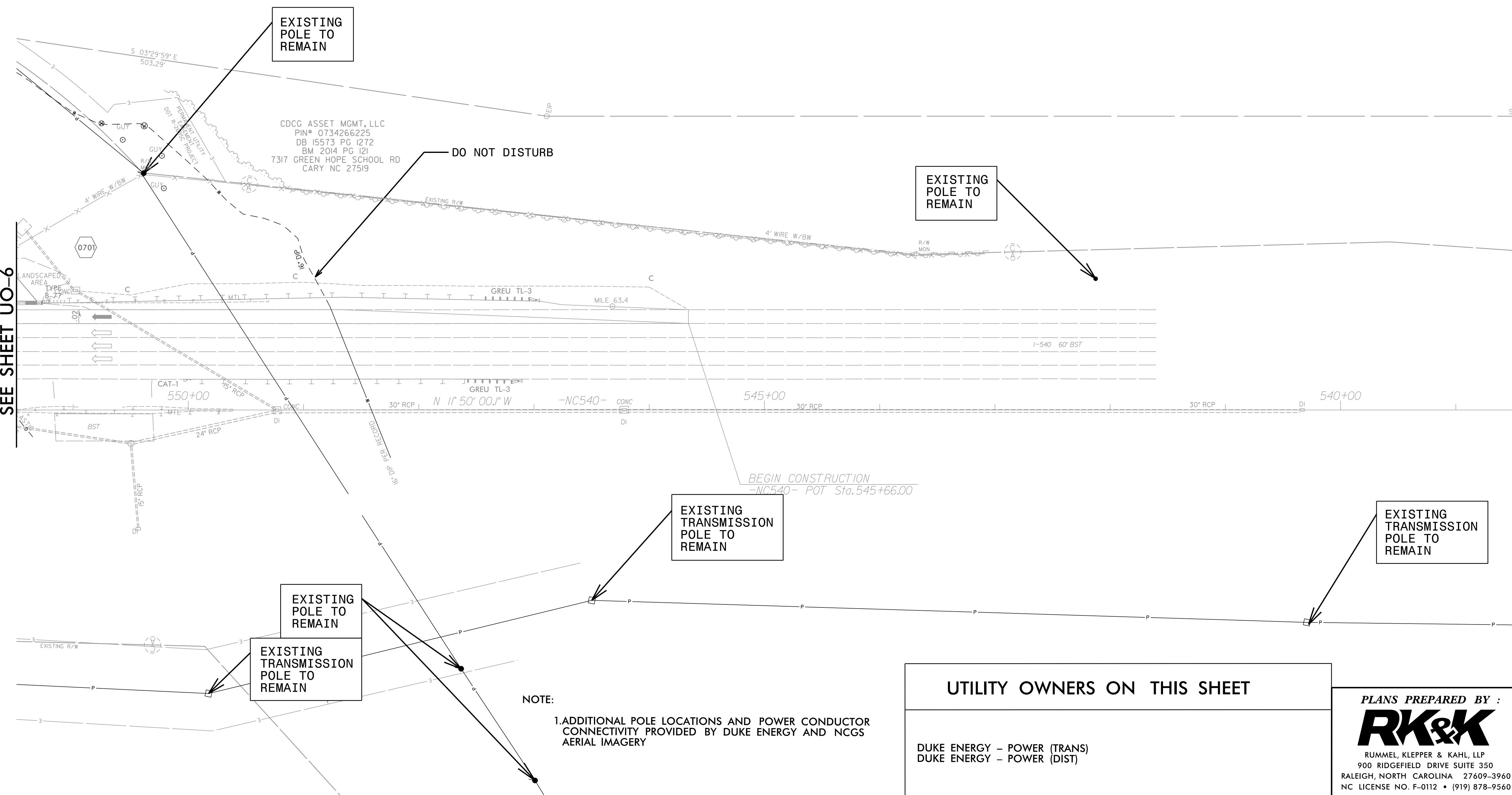
EXISTING POLE TO REMAIN

CDCG ASSET MGMT, LLC
 PIN# 0734266225
 DB 15573 PG 1272
 BM 2014 PG 121
 7317 GREEN HOPE SCHOOL RD
 CARY NC 27519

DO NOT DISTURB

EXISTING POLE TO REMAIN

MATCHLINE
 -NC540- STA. 551+50
 SEE SHEET UO-6



EXISTING TRANSMISSION POLE TO REMAIN

EXISTING TRANSMISSION POLE TO REMAIN

EXISTING POLE TO REMAIN

EXISTING TRANSMISSION POLE TO REMAIN

NOTE:
 1. ADDITIONAL POLE LOCATIONS AND POWER CONDUCTOR CONNECTIVITY PROVIDED BY DUKE ENERGY AND NCGS AERIAL IMAGERY

UTILITY OWNERS ON THIS SHEET

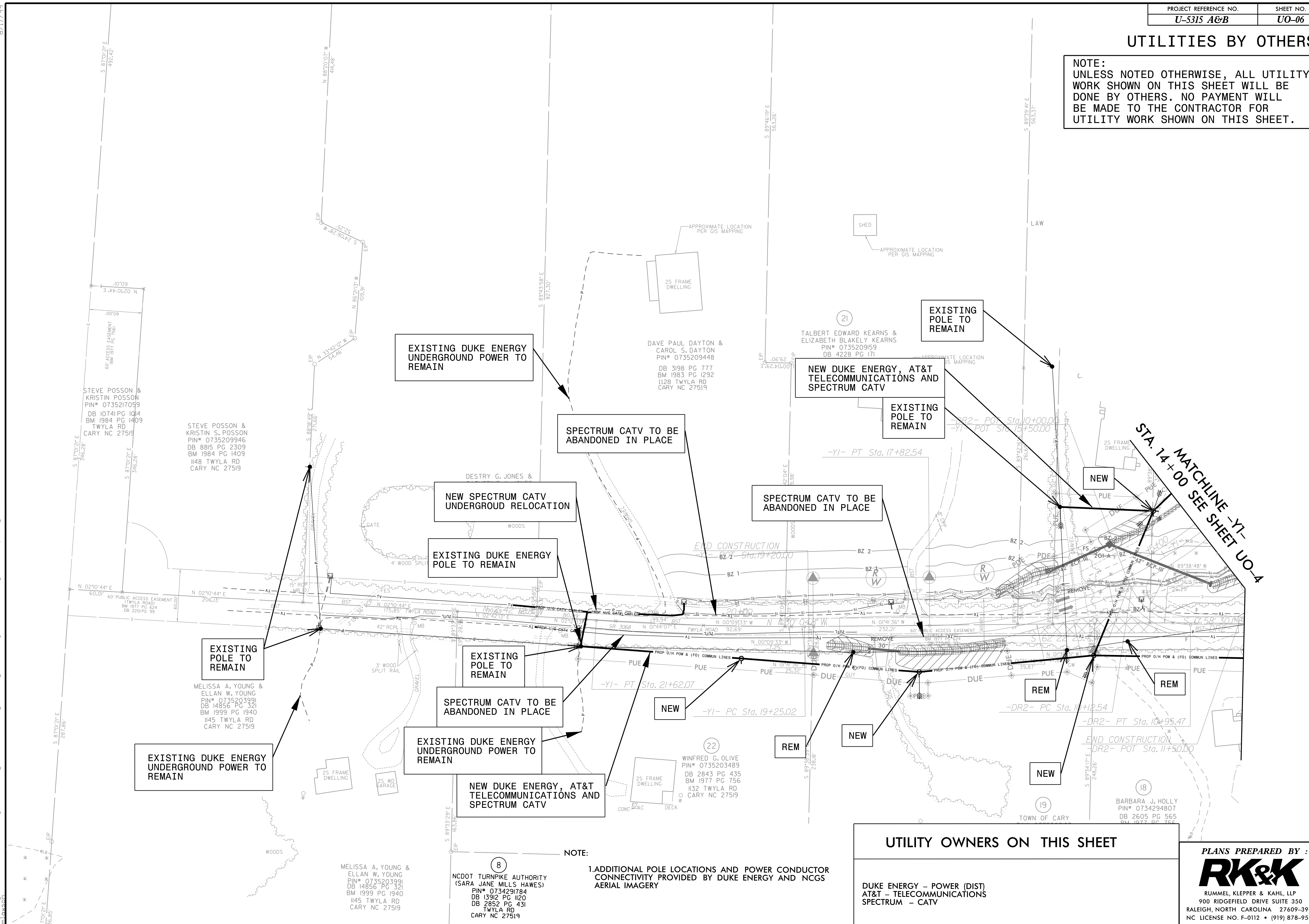
DUKE ENERGY - POWER (TRANS)
 DUKE ENERGY - POWER (DIST)

PLANS PREPARED BY :
RK&K
 RUMMEL, KLEPPER & KAHL, LLP
 900 RIDGEFIELD DRIVE SUITE 350
 RALEIGH, NORTH CAROLINA 27609-3960
 NC LICENSE NO. F-0112 • (919) 878-9560

8/17/99
 I:\6\2017\Projects\2011\11050_MPK\w\Final\Design\Utilities\Engineering\UB0\Proj\U5315_uo_r.dwg - U005_psh.dgn
 11/15/2017 11:05:00 AM

UTILITIES BY OTHERS

NOTE:
UNLESS NOTED OTHERWISE, ALL UTILITY WORK SHOWN ON THIS SHEET WILL BE DONE BY OTHERS. NO PAYMENT WILL BE MADE TO THE CONTRACTOR FOR UTILITY WORK SHOWN ON THIS SHEET.



NOTE:
1. ADDITIONAL POLE LOCATIONS AND POWER CONDUCTOR CONNECTIVITY PROVIDED BY DUKE ENERGY AND NCGS AERIAL IMAGERY

UTILITY OWNERS ON THIS SHEET	
DUKE ENERGY - POWER (DIST) AT&T - TELECOMMUNICATIONS SPECTRUM - CATV	
PLANS PREPARED BY :	
RK&K	
RUMMEL, KLEPPER & KAHL, LLP 900 RIDGEFIELD DRIVE SUITE 350 RALEIGH, NORTH CAROLINA 27609-3960 NC LICENSE NO. F-0112 • (919) 878-9560	

8/17/99
 I:\Projects\2011\110530_MPK\w\final\Design\Utilities\Engineering\UB01\Proj\U5315_UBO_r.dwg (08.10.06) - psh.dgn
 11/16/2017