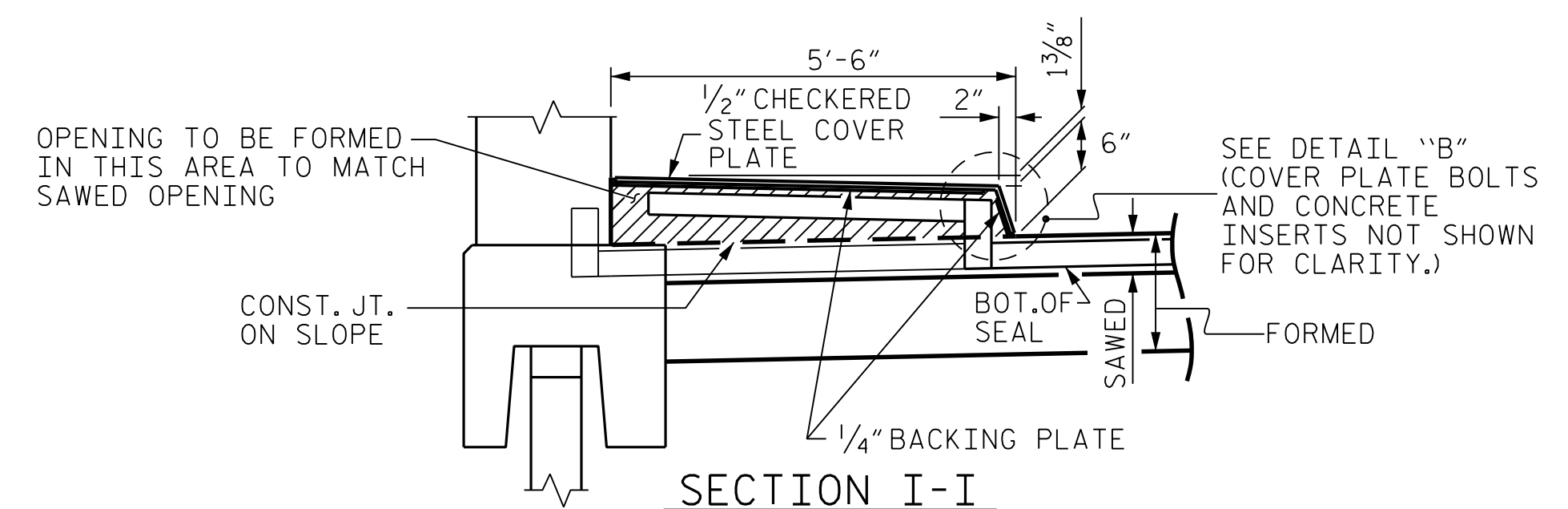
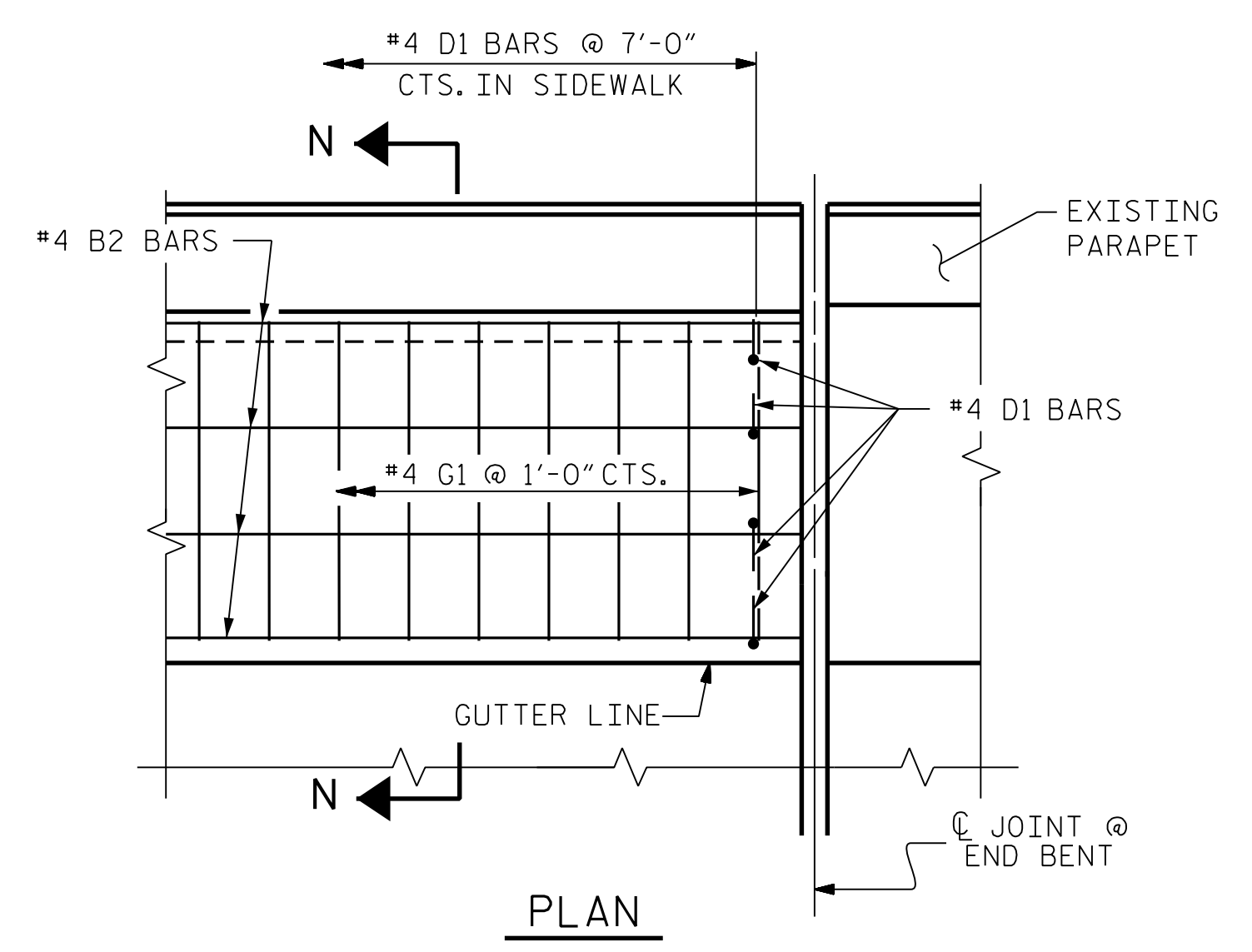


SECTION H-H



SECTION I-I



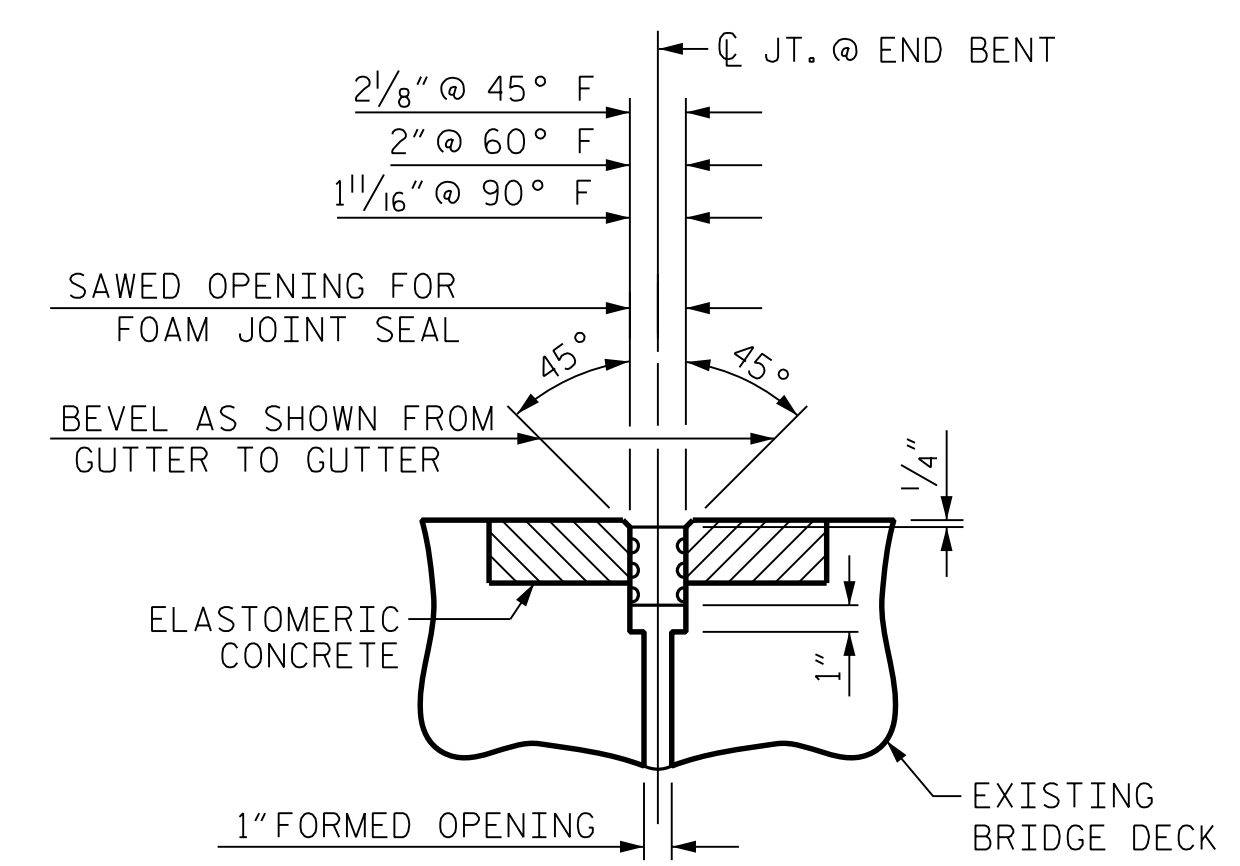
PLAN

DETAILS OF SIDEWALK ON APPROACH SLAB

THE STEEL PLATES SHALL CONFORM TO AASHTO M270 GRADE 36 OR APPROVED EQUAL. AFTER FABRICATION, THE PLATES SHALL BE COMMERCIALY BLAST CLEANED AND EITHER COATED WITH A MINIMUM THICKNESS OF 4 MILS (DRY) OF ZINC-RICH PAINT, GALVANIZED OR METALLIZED TO A MINIMUM THICKNESS OF 6 MILS IN ACCORDANCE WITH THE STANDARD SPECIFICATIONS. FOR THERMAL SPRAYED COATINGS (METALLIZATION), SEE SPECIAL PROVISIONS.

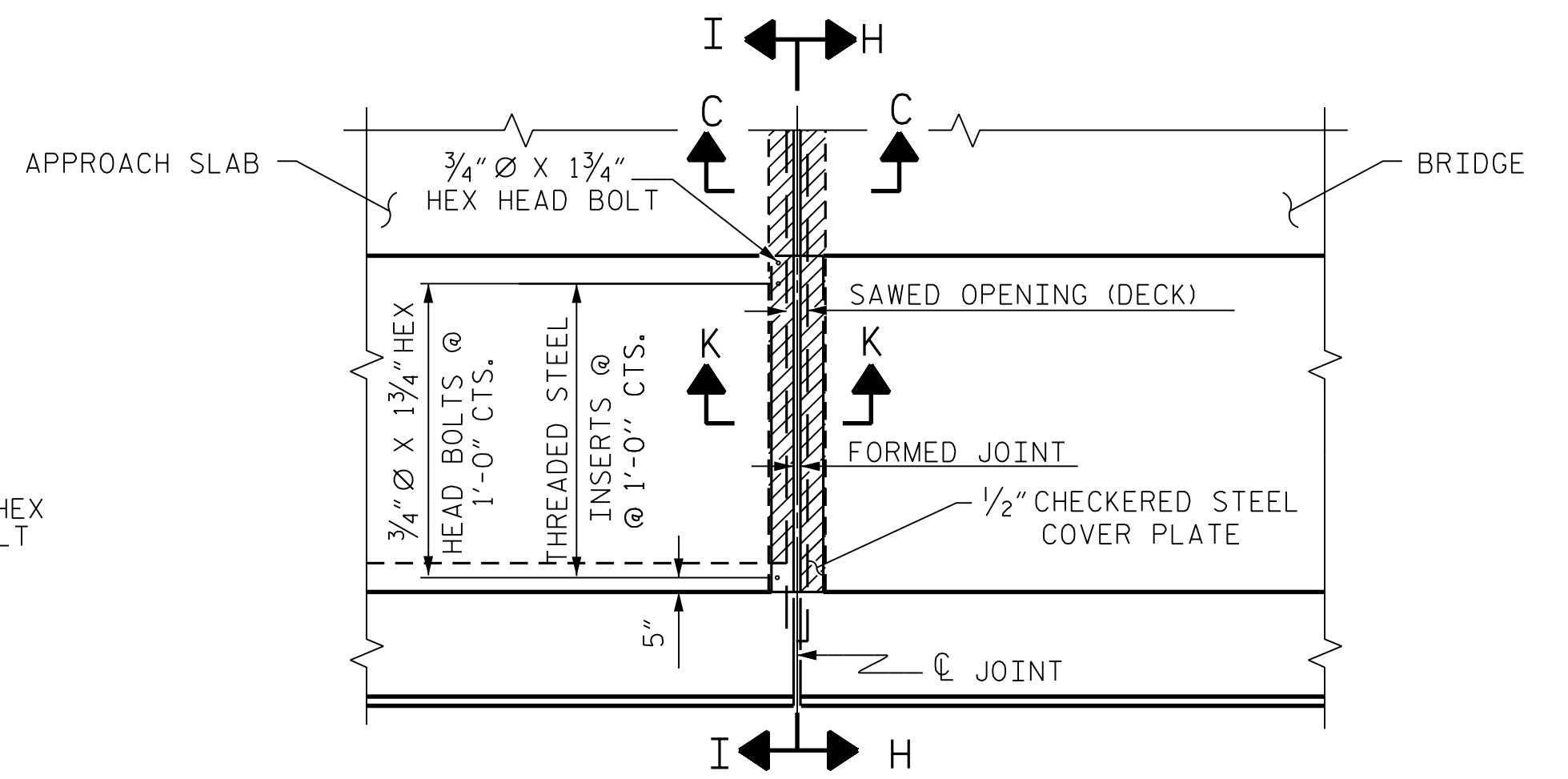
THE 3/4" DIAMETER HEX HEAD BOLTS SHALL CONFORM TO ASTM F593 ALLOY 304 STAINLESS STEEL.

NO SEPARATE PAYMENT WILL BE MADE FOR FURNISHING AND INSTALLING THE COVER PLATE. THE ENTIRE COST OF THIS WORK SHALL BE INCLUDED IN THE LUMP SUM PRICE FOR "FOAM JOINT SEALS".

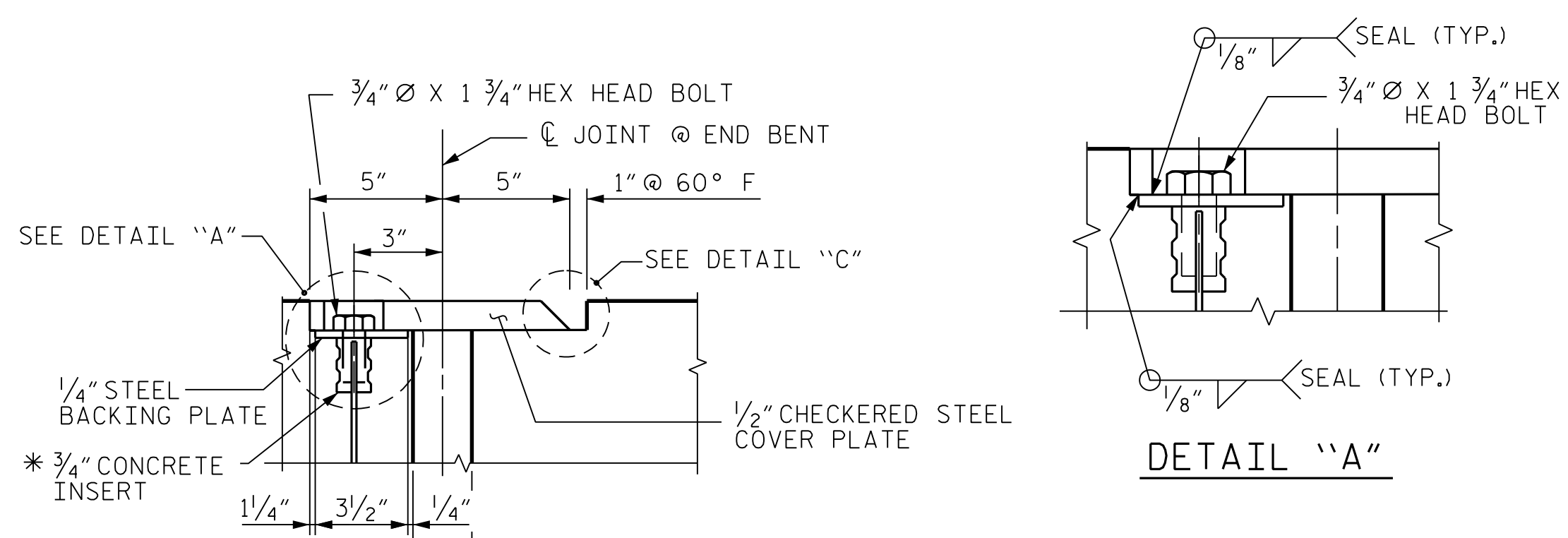


SECTION C-C THROUGH EXISTING EXPANSION JOINT

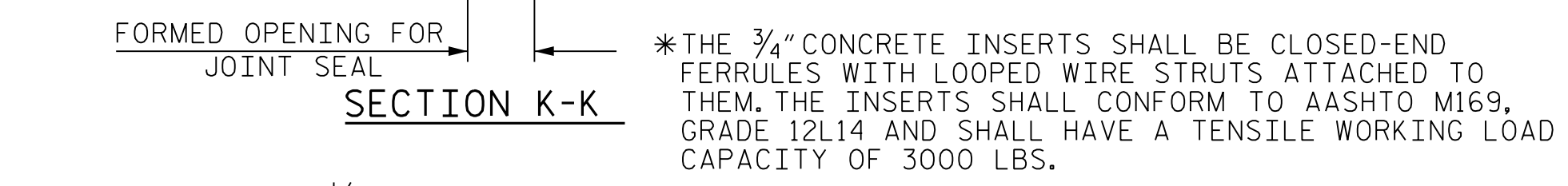
FOAM JOINT SEAL (FOR FOAM JOINT SEAL, SEE SPECIAL PROVISIONS)



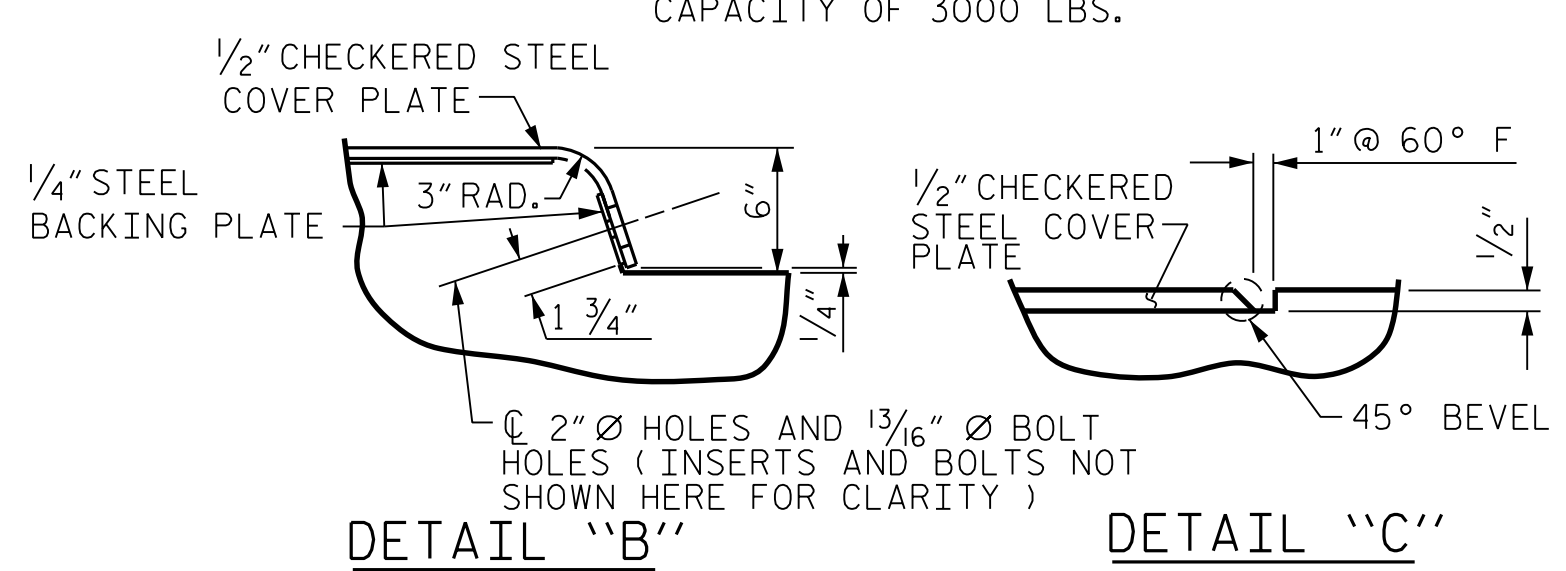
PLAN OF FOAM JOINT SEAL @ END BENT



DETAIL "A"



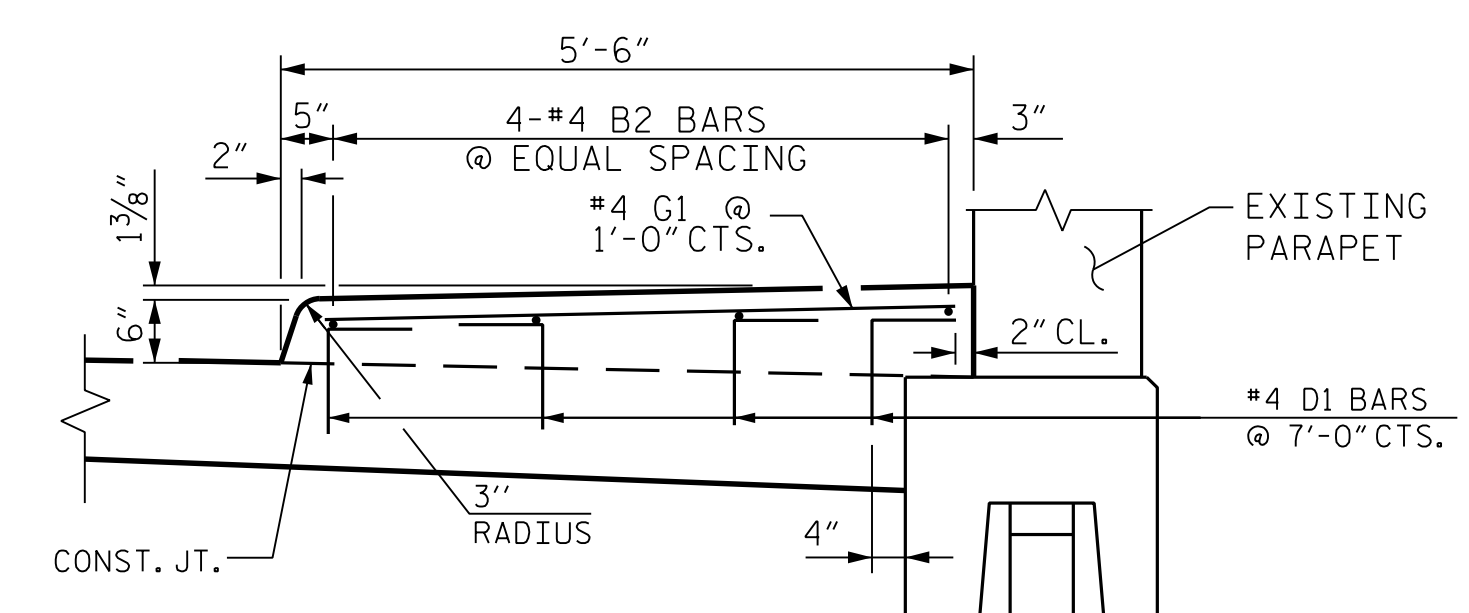
SECTION K-K



DETAIL "B"

DETAIL "C"

JOINT SEAL DETAILS @ END BENT

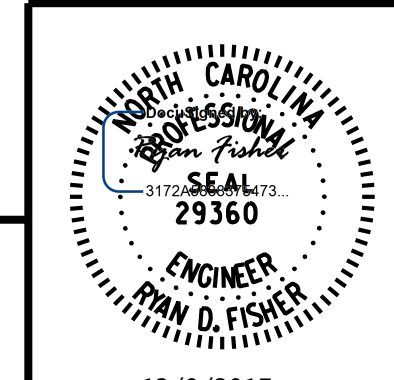


SECTION N-N SIDEWALK DETAILS

PROJECT NO. U-5315 A & B
WAKE COUNTY
 STATION: 67+51.13 -L-

SHEET 3 OF 3

STATE OF NORTH CAROLINA
 DEPARTMENT OF TRANSPORTATION
 RALEIGH
SIDEWALK DETAILS
 BRIDGE APPROACH
 SLAB DETAILS



RK&K
 RUMMEL, KLEPPER & KAHL, LLP
 900 RIDGEFIELD DRIVE SUITE 350
 RALEIGH, NC 27609-3960 (919) 878-9560
 NC LICENSE NUMBER: F-0112

REVISIONS				SHEET NO.	
NO.	BY:	DATE:	NO.	BY:	DATE:
1			3		
2			4		

TOTAL SHEETS: 3

DOCUMENT NOT CONSIDERED FINAL UNLESS ALL SIGNATURES COMPLETED

default 12/9/2017 R:\DGN\Sidewalk\11050_SD_SW_03.dgn

DRAWN BY : B. A. HAAG DATE : DEC 2017
 CHECKED BY : R. D. FISHER DATE : DEC 2017
 DESIGN ENGINEER OF RECORD : R. D. FISHER DATE : DEC 2017