

SIDEWALK PLAN

NOTES:

- ALL REINFORCING IN SIDEWALK SHALL BE EPOXY COATED.
- FOAM JOINT SEALS SHALL BE PLACED FOR SIDEWALK AT END BENT 1 AND END BENT 2. FOR FOAM JOINT SEALS, SEE SPECIAL PROVISIONS.
- FOR THERMAL SPRAYED COATINGS (METALLIZATION), SEE SPECIAL PROVISIONS.
- GROOVED CONTRACTION JOINT, 1/2" IN DEPTH, SHALL BE TOOLED IN ALL EXPOSED FACES OF THE SIDEWALK IN ACCORDANCE WITH ARTICLE 825-10(B) OF THE STANDARD SPECIFICATIONS. THE CONTRACTION JOINT SHALL BE LOCATED AT A SPACING OF 8FT. TO 10FT. BETWEEN EXPANSION JOINTS. NO CONTRACTION JOINTS WILL BE REQUIRED FOR SEGMENTS LESS THAN 10 FEET IN LENGTH.
- DRILL HOLES IN CONCRETE AND FILL THEM WITH AN ADHESIVE BONDING MATERIAL TO INSTALL D1 DOWELS. NO FIELD TESTING IS REQUIRED.

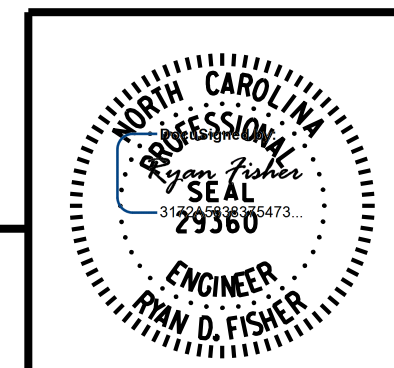
TOTAL BILL OF MATERIAL			
	CLASS AA CONCRETE (BRIDGE)	EPOXY COATED REINFORCING STEEL (BRIDGE)	FOAM JOINT SEALS (SIDEWALK)
	CU.YDS.	LBS.	LUMP SUM
SUPERSTRUCTURE	36.0	1,951	LUMP SUM
END BENT 1			
BENT 1			
END BENT 2			
TOTAL	36.0	1,951	LUMP SUM

PROJECT NO. U-5315 A & B
WAKE COUNTY
 STATION: 67+51.13 -L-

SHEET 1 OF 3

STATE OF NORTH CAROLINA
 DEPARTMENT OF TRANSPORTATION
 RALEIGH

SIDEWALK DETAILS
 BRIDGE ON
 MORRISVILLE PARKWAY
 OVER WESTERN WAKE FREEWAY



RK&K
 RUMMEL, KLEPPER & KAHL, LLP
 900 RIDGEFIELD DRIVE SUITE 350
 RALEIGH, NC 27609-3960 (919) 878-9560
 NC LICENSE NUMBER: F-0112

**DOCUMENT NOT CONSIDERED FINAL
 UNLESS ALL SIGNATURES COMPLETED**

REVISIONS						SHEET NO.
NO.	BY:	DATE:	NO.	BY:	DATE:	
1			3			S-1
2			4			TOTAL SHEETS 3

default 12/9/2017 R:\DGN\Sidewalk\11050_SD_SW_01.dgn

DRAWN BY : B. A. HAAG DATE : DEC 2017
 CHECKED BY : R. D. FISHER DATE : DEC 2017
 DESIGN ENGINEER OF RECORD : R. D. FISHER DATE : DEC 2017