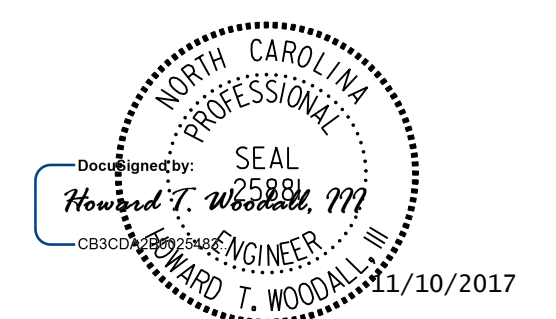
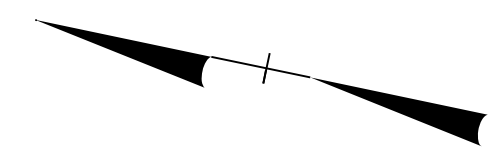


8/17/99



UTILITY CONSTRUCTION PLANS

DOCUMENT NOT CONSIDERED FINAL UNLESS ALL SIGNATURES COMPLETED



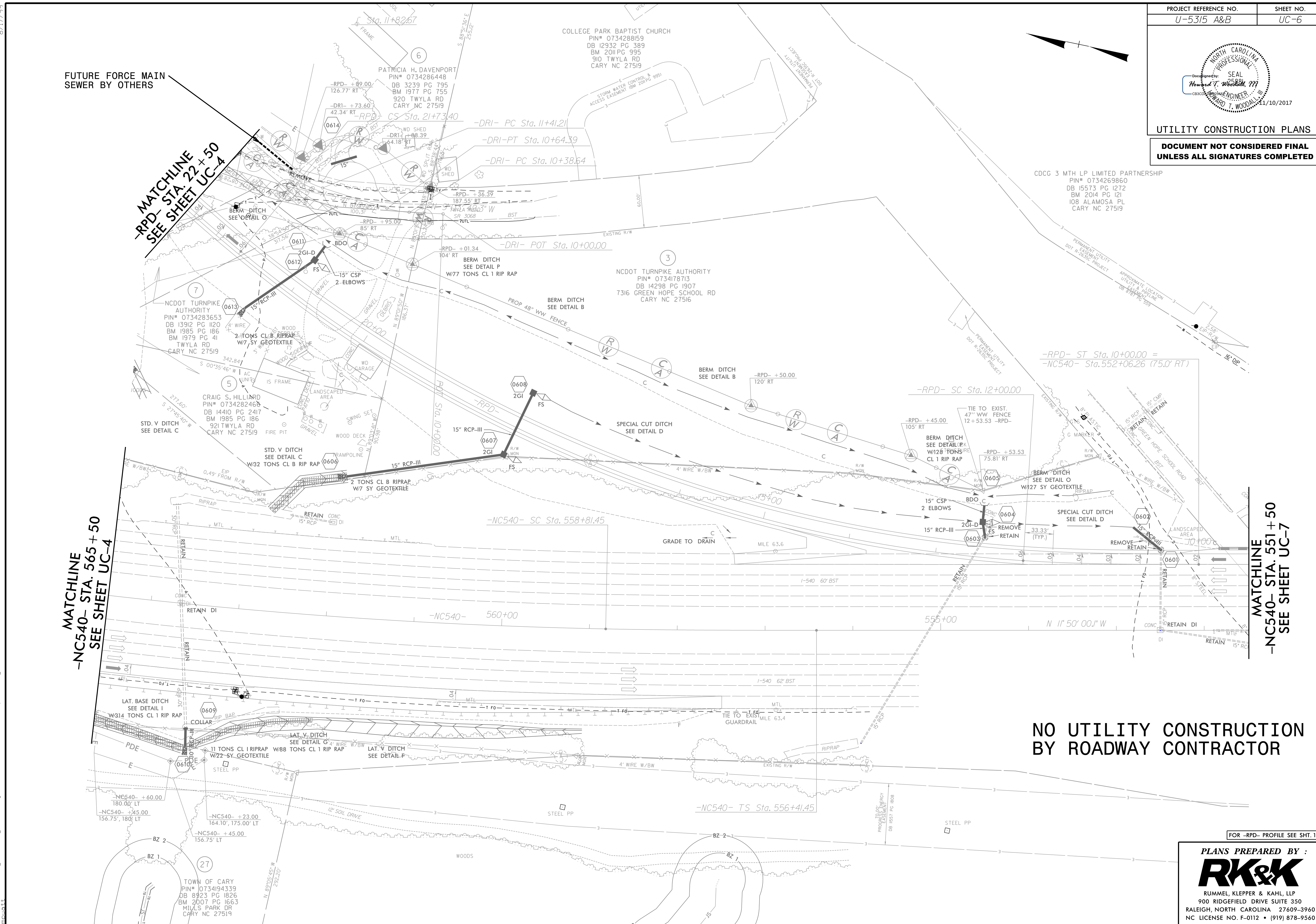
FUTURE FORCE MAIN SEWER BY OTHERS

MATCHLINE - RPD - STA. 22 + 50 SEE SHEET UC-4

MATCHLINE - NC540 - STA. 565 + 50 SEE SHEET UC-4

MATCHLINE - NC540 - STA. 551 + 50 SEE SHEET UC-7

NO UTILITY CONSTRUCTION BY ROADWAY CONTRACTOR



CDCG 3 MTH LP LIMITED PARTNERSHIP
 PIN# 0734269860
 DB 15573 PG 1272
 BM 2014 PG 121
 108 ALAMOSA PL
 CARY NC 27519

NCDOT TURNPIKE AUTHORITY
 PIN# 0734178713
 DB 14298 PG 1907
 7316 GREEN HOPE SCHOOL RD
 CARY NC 27516

NCDOT TURNPIKE AUTHORITY
 PIN# 0734283653
 DB 13912 PG 1120
 BM 1985 PG 186
 BM 1979 PG 41
 TWYLA RD
 CARY NC 27519

CRAIG S. HILLIARD
 PIN# 0734282468
 DB 14410 PG 2417
 BM 1985 PG 186
 921 TWYLA RD
 CARY NC 27519

PATRICIA H. DAVENPORT
 PIN# 0734286448
 DB 3239 PG 795
 BM 1977 PG 755
 920 TWYLA RD
 CARY NC 27519

COLLEGE PARK BAPTIST CHURCH
 PIN# 0734288159
 DB 12932 PG 389
 BM 2011 PG 995
 910 TWYLA RD
 CARY NC 27519

TOWN OF CARY
 PIN# 0734194339
 DB 8923 PG 1826
 BM 2007 PG 1663
 MILLS PARK DR
 CARY NC 27519

FOR -RPD- PROFILE SEE SHT. 12

PLANS PREPARED BY :

RUMMEL, KLEPPER & KAHL, LLP
 900 RIDGEFIELD DRIVE SUITE 350
 RALEIGH, NORTH CAROLINA 27609-3960
 NC LICENSE NO. F-0112 • (919) 878-9560

I:\9\2017\Utilities\Engineering\UC\Proj\Final Plans\U5315.ut...psh06.dgn