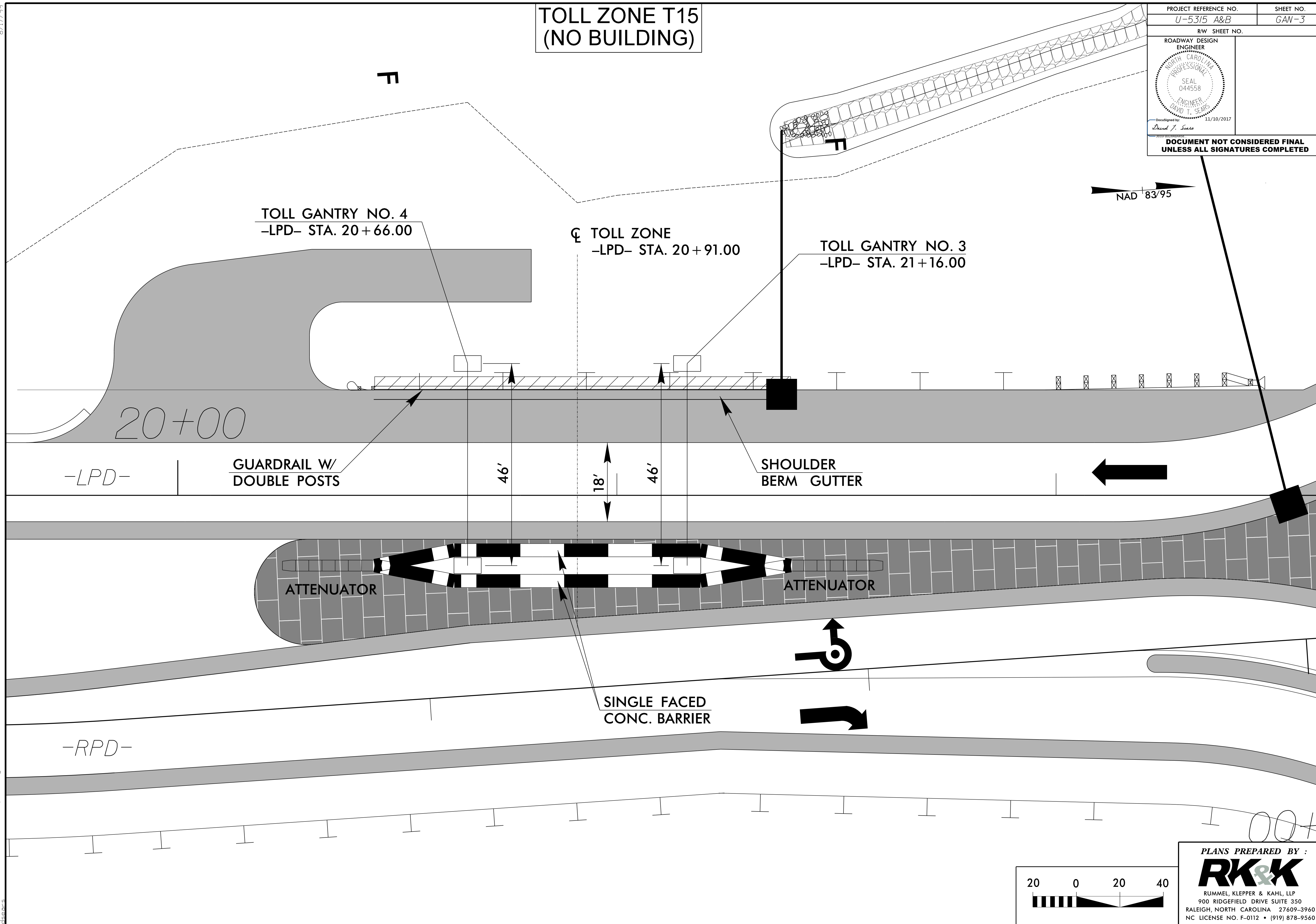


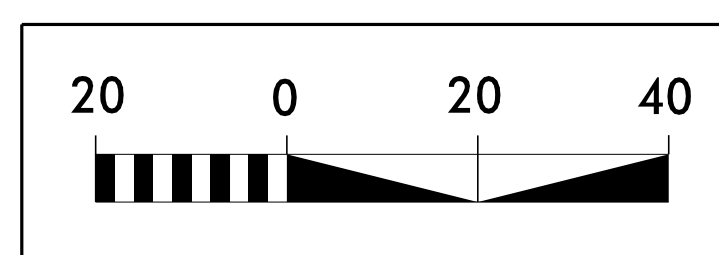
B.17/99

TOLL ZONE T15 (NO BUILDING)

PROJECT REFERENCE NO. U-5315 A&B	SHEET NO. GAN-3
RW SHEET NO.	
ROADWAY DESIGN ENGINEER	
Documented by: <i>David T. Sears</i> 11/10/2017 DOCUMENT NOT CONSIDERED FINAL UNLESS ALL SIGNATURES COMPLETED	



I:\0\2017\10\11\TTS\DCN\U5315_GAN-ps-h03.dgn



PLANS PREPARED BY :

RK&K
 RUMMEL, KLEPPER & KAHL, LLP
 900 RIDGEFIELD DRIVE SUITE 350
 RALEIGH, NORTH CAROLINA 27609-3960
 NC LICENSE NO. F-0112 • (919) 878-9560