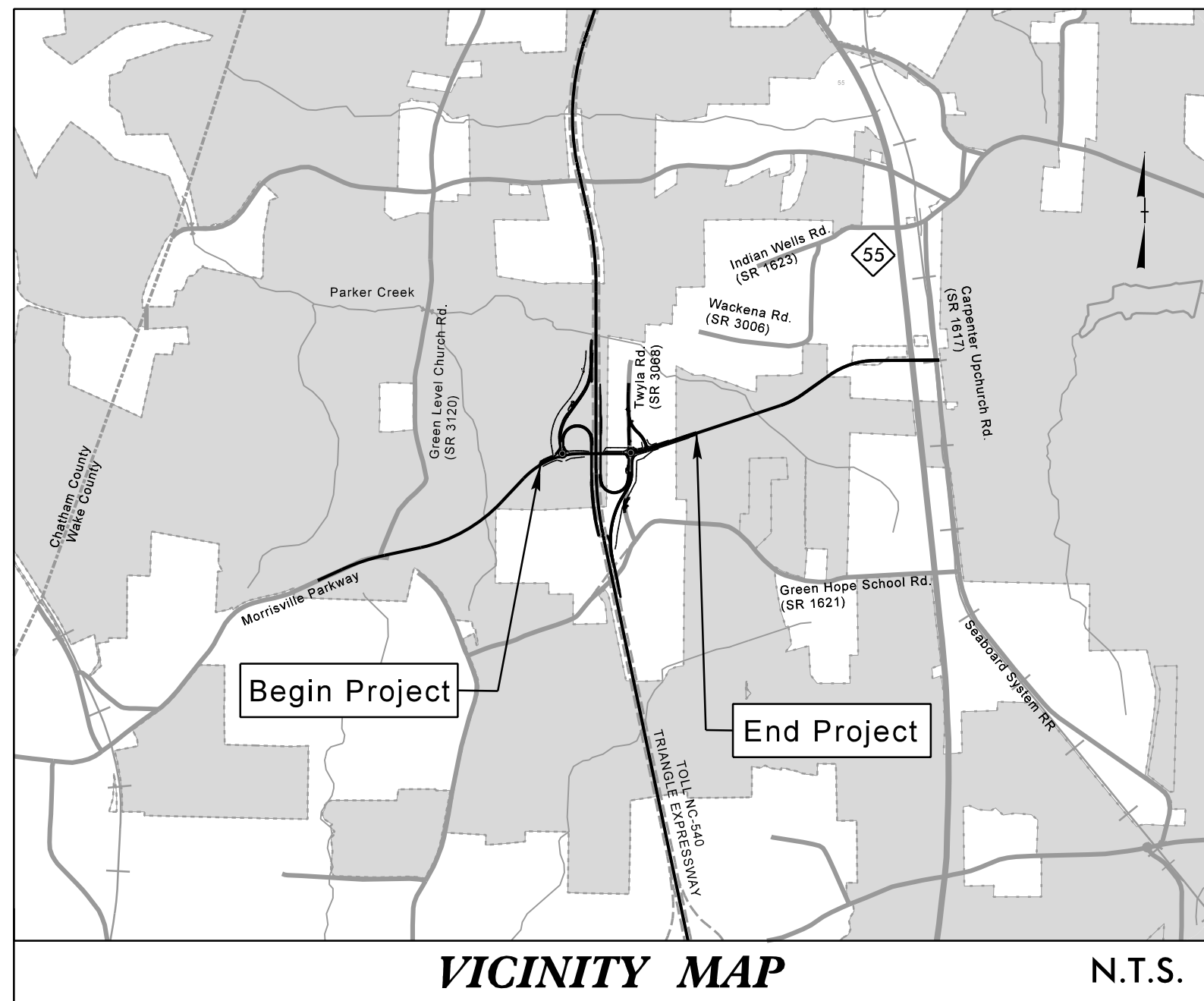


CARY PROJECT: ST 1123A/220 TIP PROJECT: U-5315 A&B



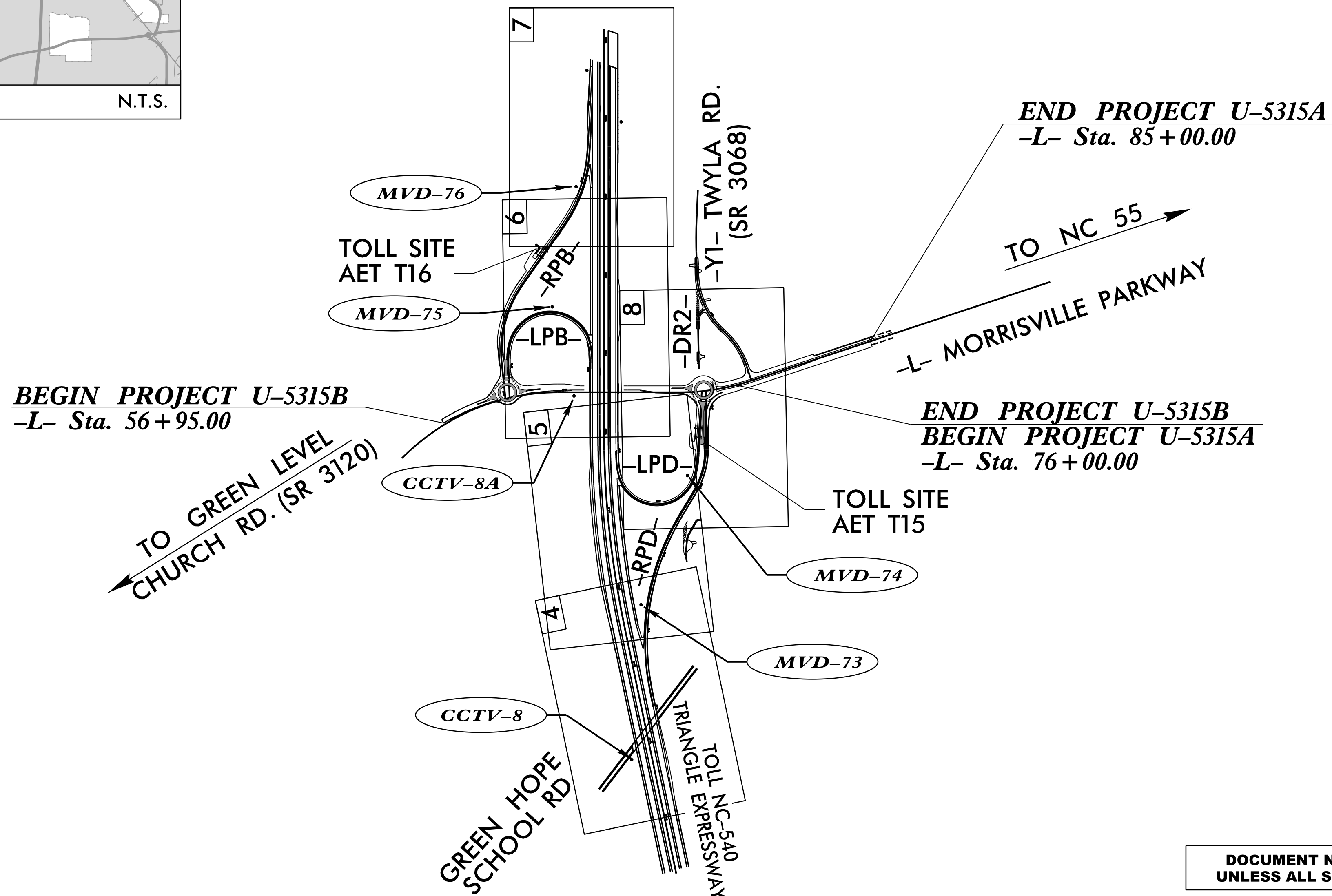
VICINITY MAP N.T.S.

STATE OF NORTH CAROLINA
DIVISION OF HIGHWAYS

WAKE COUNTY

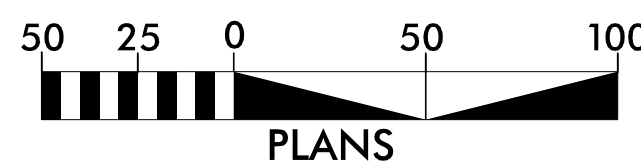
**LOCATION: MORRISVILLE PARKWAY EXTENSION AND NC 540 INTERCHANGE
FROM WEST OF HIGHCROFT DRIVE TO EAST OF MILLS PARK DRIVE IN CARY
TYPE OF WORK: COMMUNICATIONS CABLE, CONDUIT ROUTING, CLOSED CIRCUIT TELEVISION
CAMERAS AND MICROWAVE VEHICLE DETECTORS**

STATE	STATE PROJECT REFERENCE NO.		SHEET NO.	TOTAL SHEETS
N.C.	U-5315A/U-5315B		ITS-1	
STATE PROJ. NO.	F.A. PROJ. NO.	DESCRIPTION		
U-5315A	45429.1.F2	STPDA-0503(19)	PE	
U-5315A	45429.2.2	STPDA-0540(38)	RW, UTILITIES	
U-5315B	45429.1.F3	STPDA-0503(19)	PE	
U-5315B	45429.2.3	STPDA-0540(39)	RW, UTILITIES	
U-5315A&B	45429.3.3	STPDA-0540(39)	CONST.	
U-5315B	45429.5.TA1		TURNPIKE CONST.	
U-5315B	45429.5.TA3		TURNPIKE ROW	



**DOCUMENT NOT CONSIDERED FINAL
UNLESS ALL SIGNATURES COMPLETED**

GRAPHIC SCALES



INDEX OF SHEETS

SHEET ITS-1 SHEET IT-1A SHEET IT-2A THRU ITS-2P SHEET ITS-3A THRU ITS-3D	TITLE SHEET CONSTRUCTION NOTES STANDARD ITS & AET DETAILS TOLL SITE PAD, JUNCTION BOX, AND CONDUIT DETAILS
SHEET ITS-4 THRU ITS-8 SHEET ITS-9 THRU ITS-15	COMMUNICATIONS CABLE AND CONDUIT ROUTING SPlice DETAILS

PREPARED IN THE OFFICE OF:
RK&K
RUMMEL, KLEPPER & KAHL, LLP
900 RIDGEFIELD DRIVE, SUITE 350
RALEIGH, NORTH CAROLINA 27609
NC LICENSE NO. F-0112
**FOR NORTH CAROLINA
DEPARTMENT OF TRANSPORTATION**

2012 STANDARD SPECIFICATIONS

LETTING DATE:
DECEMBER 19, 2017

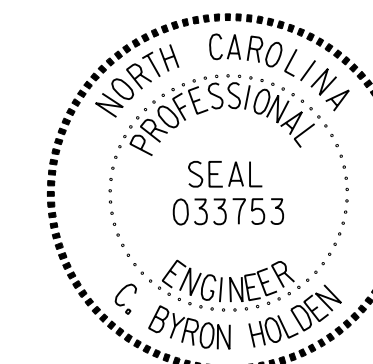
C. BYRON HOLDEN, P.E.
PROJECT ENGINEER

DAVID SEARS, P.E.
PROJECT DESIGN ENGINEER

**NCDOT CONTACTS:
NORTH CAROLINA TURNPIKE AUTHORITY
DENNIS JERNIGAN, P.E.**

**TRANSPORTATION AND MOBILITY
INTELLIGENT TRANSPORTATION
SYSTEMS SECTION
SHERRY YOW**

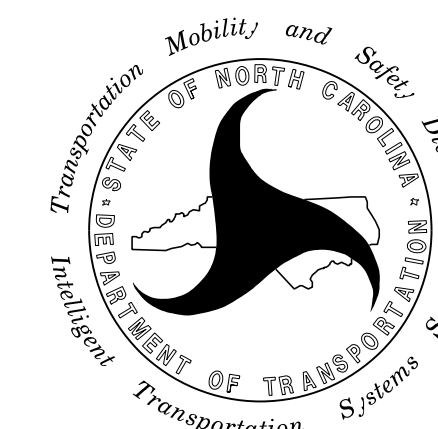
SEAL



DocuSigned by:
C. Byron Holden

12/10/2017
DATE

Prepared for the Offices of:



750 N. Greenfield Pkwy., Garner, NC 27529