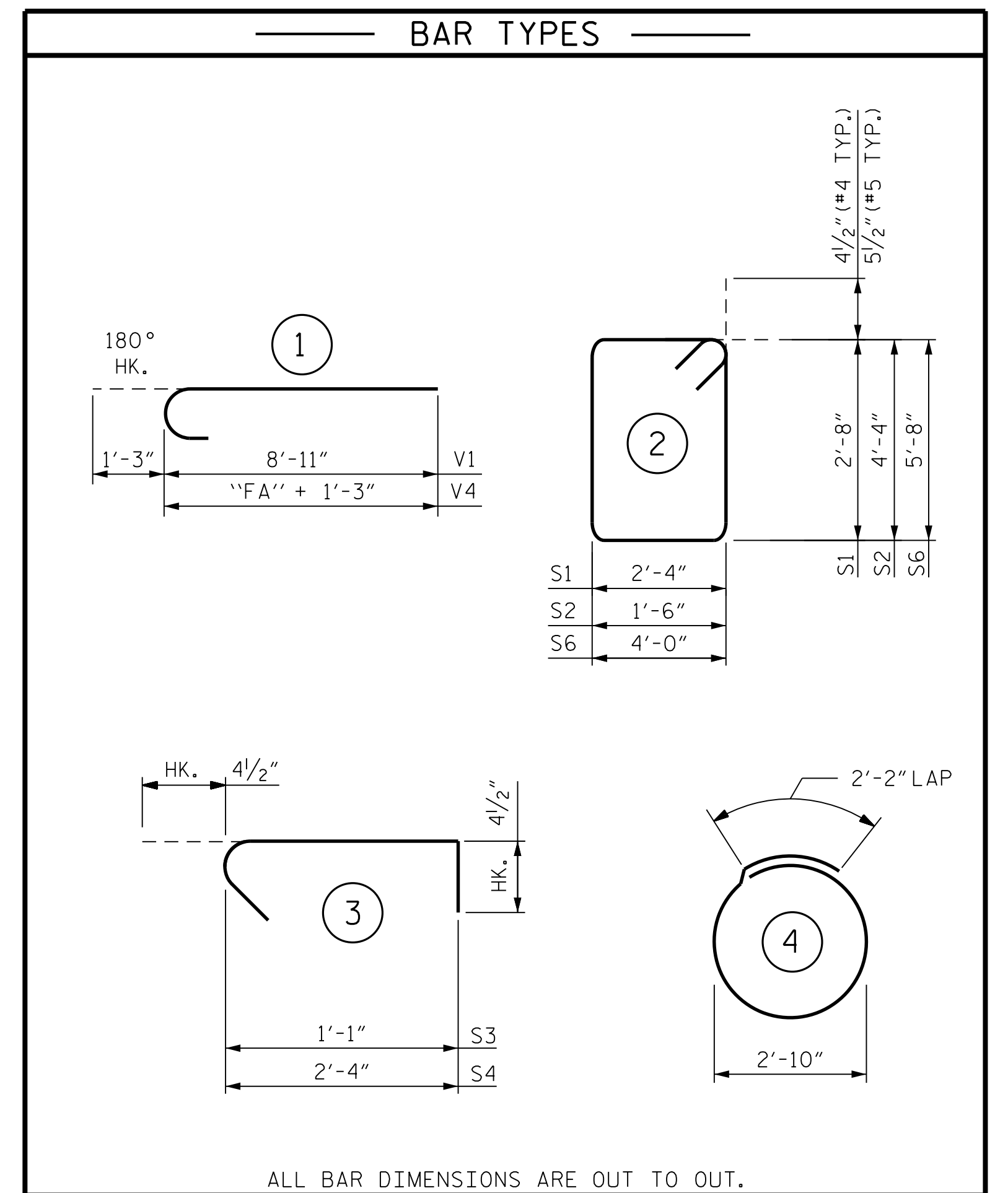


REINFORCING BAR SCHEDULE											
STRUCTURE ID "B"						STRUCTURE ID "E"					
BAR	NO.	SIZE	TYPE	LENGTH	WEIGHT	BAR	NO.	SIZE	TYPE	LENGTH	WEIGHT
B1	14	#5	STR.	2'-0"	29	B1	14	#5	STR.	2'-0"	29
B2	4	#5	STR.	5'-8"	24	B2	4	#5	STR.	5'-8"	24
B3	6	#5	STR.	4'-0"	25	B3	6	#5	STR.	4'-0"	25
S1	24	#4	2	10'-9"	172	S1	23	#4	2	10'-9"	165
S2	24	#4	2	12'-5"	199	S2	23	#4	2	12'-5"	191
S3	48	#4	3	1'-10"	59	S3	46	#4	3	1'-10"	56
S4	24	#4	3	3'-1"	49	S4	23	#4	3	3'-1"	47
S5	27	#5	4	11'-1"	312	S5	13	#5	4	11'-1"	150
S6	5	#5	2	20'-3"	106	S6	5	#5	2	20'-3"	106
V1	14	#9	1	10'-2"	484	V1	14	#9	1	10'-2"	484
V2	14	#9	STR.	22'-10"	1,087	V2	14	#9	STR.	21'-3"	1,012
V4	14	#9	1	16'-6"	785	V4	14	#9	1	9'-6"	452
REINFORCING STEEL 3,331 LBS.						REINFORCING STEEL 2,741 LBS.					



CONCRETE QUANTITIES					
STRUCTURE ID "B"			STRUCTURE ID "E"		
DRILLED PIER CONCRETE			DRILLED PIER CONCRETE		
POUR #1 - DRILLED PIER	CU. YDS.	5.0	POUR #1 - DRILLED PIER	CU. YDS.	2.5
CLASS "A" CONCRETE BREAKDOWN			CLASS "A" CONCRETE BREAKDOWN		
POUR #2 - FOOTING	CU. YDS.	2.6	POUR #2 - FOOTING	CU. YDS.	2.6
POUR #3 - COLUMN	CU. YDS.	12.0	POUR #3 - COLUMN	CU. YDS.	11.1
TOTAL CLASS "A" CONCRETE	CU. YDS.	14.6	TOTAL CLASS "A" CONCRETE	CU. YDS.	13.7

PROJECT NO. U-5315 A & B
 WAKE _____ COUNTY
 STATION: _____

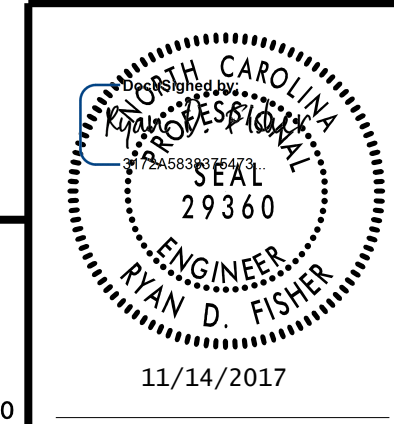
STATE OF NORTH CAROLINA
 DEPARTMENT OF TRANSPORTATION
 RALEIGH

OVERHEAD STRUCTURES

BILL OF MATERIAL
 BUTTERFLY OVERHEAD
 SIGN STRUCTURES

REVISIONS						SHEET NO.
NO.	BY:	DATE:	NO.	BY:	DATE:	SIGN-32
1			3			TOTAL SHEETS
2			4			12

RK&K
 RUMMEL, KLEPPER & KAHL, LLP
 900 RIDGEFIELD DRIVE SUITE 350
 RALEIGH, NC 27609-3960 (919) 878-9560
 NC LICENSE NUMBER: F-0112



11/13/2017 R:\DGN\11050_SD_OHS_012.dgn

DRAWN BY : B. A. HAAG DATE : AUG 2017
 CHECKED BY : R. D. FISHER DATE : AUG 2017
 DESIGN ENGINEER OF RECORD : R. D. FISHER DATE : AUG 2017