

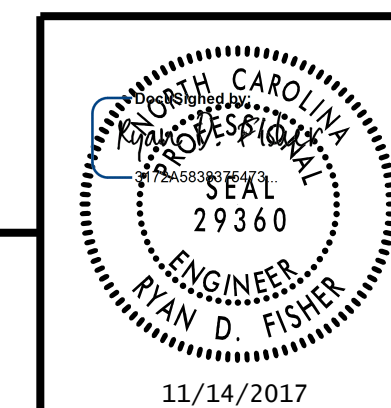
CONCRETE QUANTITIES					
STRUCTURE ID T15 IN (LEFT COLUMN)			STRUCTURE ID T16 IN (LEFT COLUMN)		
DRILLED PIER CONCRETE					
POUR #1 - DRILLED PIER	CU. YDS.	3.4	POUR #1 - DRILLED PIER	CU. YDS.	1.8
CLASS "A" CONCRETE BREAKDOWN CU. YDS.					
POUR #2 - FOOTING	CU. YDS.	2.3	POUR #2 - FOOTING	CU. YDS.	2.3
POUR #3 - COLUMN	CU. YDS.	14.0	POUR #3 - COLUMN	CU. YDS.	14.3
TOTAL CLASS "A" CONCRETE	CU. YDS.	16.3	TOTAL CLASS "A" CONCRETE	CU. YDS.	16.6
STRUCTURE ID T15 IN (RIGHT COLUMN)			STRUCTURE ID T16 IN (RIGHT COLUMN)		
DRILLED PIER CONCRETE					
POUR #1 - DRILLED PIER	CU. YDS.	3.4	POUR #1 - DRILLED PIER	CU. YDS.	2.6
CLASS "A" CONCRETE BREAKDOWN CU. YDS.					
POUR #2 - FOOTING	CU. YDS.	2.3	POUR #2 - FOOTING	CU. YDS.	2.3
POUR #3 - COLUMN	CU. YDS.	14.5	POUR #3 - COLUMN	CU. YDS.	14.3
TOTAL CLASS "A" CONCRETE	CU. YDS.	16.8	TOTAL CLASS "A" CONCRETE	CU. YDS.	16.6
STRUCTURE ID T15 OUT (LEFT COLUMN)			STRUCTURE ID T16 OUT (LEFT COLUMN)		
DRILLED PIER CONCRETE					
POUR #1 - DRILLED PIER	CU. YDS.	3.4	POUR #1 - DRILLED PIER	CU. YDS.	1.8
CLASS "A" CONCRETE BREAKDOWN CU. YDS.					
POUR #2 - FOOTING	CU. YDS.	2.3	POUR #2 - FOOTING	CU. YDS.	2.3
POUR #3 - COLUMN	CU. YDS.	14.0	POUR #3 - COLUMN	CU. YDS.	14.3
TOTAL CLASS "A" CONCRETE	CU. YDS.	16.3	TOTAL CLASS "A" CONCRETE	CU. YDS.	16.6
STRUCTURE ID T15 OUT (RIGHT COLUMN)			STRUCTURE ID T16 OUT (RIGHT COLUMN)		
DRILLED PIER CONCRETE					
POUR #1 - DRILLED PIER	CU. YDS.	3.4	POUR #1 - DRILLED PIER	CU. YDS.	2.6
CLASS "A" CONCRETE BREAKDOWN CU. YDS.					
POUR #2 - FOOTING	CU. YDS.	2.3	POUR #2 - FOOTING	CU. YDS.	2.3
POUR #3 - COLUMN	CU. YDS.	14.4	POUR #3 - COLUMN	CU. YDS.	14.5
TOTAL CLASS "A" CONCRETE	CU. YDS.	16.7	TOTAL CLASS "A" CONCRETE	CU. YDS.	16.8

PROJECT NO. U-5315 A & B
WAKE COUNTY

STATION: _____

SHEET 2 OF 2

STATE OF NORTH CAROLINA
 DEPARTMENT OF TRANSPORTATION
 RALEIGH
OVERHEAD STRUCTURES
 BILL OF MATERIAL
 OVERHEAD GANTRY STRUCTURES



RK&K
 RUMMEL, KLEPPER & KAHL, LLP
 900 RIDGEFIELD DRIVE SUITE 350
 RALEIGH, NC 27609-3960 (919) 878-9560
 NC LICENSE NUMBER: F-0112

11/14/2017

REVISIONS				SHEET NO.		
NO.	BY:	DATE:	NO.	BY:	DATE:	TOTAL SHEETS
1			3			12
2			4			

**DOCUMENT NOT CONSIDERED FINAL
 UNLESS ALL SIGNATURES COMPLETED**

11/13/2017 R:\DGN\11050_SD_OHS_011.dgn

DRAWN BY : B. A. HAAG DATE : AUG 2017
 CHECKED BY : R. D. FISHER DATE : AUG 2017
 DESIGN ENGINEER OF RECORD : R. D. FISHER DATE : AUG 2017