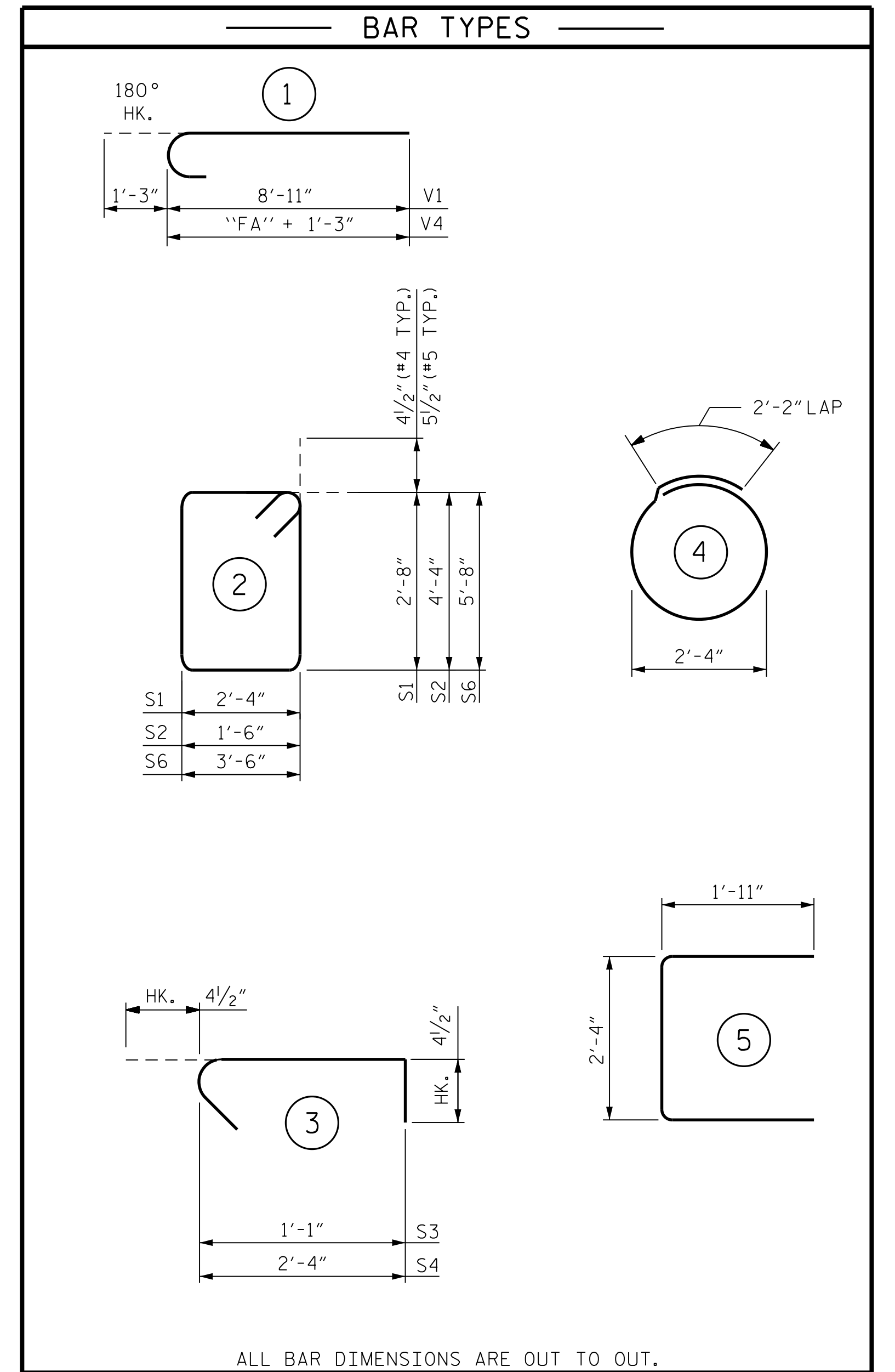


## REINFORCING BAR SCHEDULE

STRUCTURE ID T15 IN (LEFT COLUMN)						STRUCTURE ID T15 OUT (LEFT COLUMN)						STRUCTURE ID T16 IN (LEFT COLUMN)						STRUCTURE ID T16 OUT (LEFT COLUMN)					
BAR	NO.	SIZE	TYPE	LENGTH	WEIGHT	BAR	NO.	SIZE	TYPE	LENGTH	WEIGHT	BAR	NO.	SIZE	TYPE	LENGTH	WEIGHT	BAR	NO.	SIZE	TYPE	LENGTH	WEIGHT
B1	14	#5	STR.	2'-0"	29	B1	14	#5	STR.	2'-0"	29	B1	14	#5	STR.	2'-0"	29	B1	14	#5	STR.	2'-0"	29
B2	4	#5	STR.	5'-8"	24	B2	4	#5	STR.	5'-8"	24	B2	4	#5	STR.	5'-8"	24	B2	4	#5	STR.	5'-8"	24
B3	6	#5	STR.	3'-6"	22	B3	6	#5	STR.	3'-6"	22	B3	6	#5	STR.	3'-6"	22	B3	6	#5	STR.	3'-6"	22
S1	29	#4	2	10'-9"	208	S1	29	#4	2	10'-9"	208	S1	30	#4	2	10'-9"	215	S1	30	#4	2	10'-9"	215
S2	29	#4	2	12'-5"	241	S2	29	#4	2	12'-5"	241	S2	30	#4	2	12'-5"	249	S2	30	#4	2	12'-5"	249
S3	58	#4	3	1'-10"	71	S3	58	#4	3	1'-10"	71	S3	60	#4	3	1'-10"	73	S3	60	#4	3	1'-10"	73
S4	29	#4	3	3'-1"	60	S4	29	#4	3	3'-1"	60	S4	30	#4	3	3'-1"	62	S4	30	#4	3	3'-1"	62
S5	25	#5	4	9'-6"	248	S5	25	#5	4	9'-6"	248	S5	13	#5	4	9'-6"	129	S5	13	#5	4	9'-6"	129
S6	5	#5	2	19'-3"	100	S6	5	#5	2	19'-3"	100	S6	5	#5	2	19'-3"	100	S6	5	#5	2	19'-3"	100
U1	18	#4	5	6'-2"	74	U1	18	#4	5	6'-2"	74	U1	18	#4	5	6'-2"	74	U1	18	#4	5	6'-2"	74
V1	14	#9	1	10'-2"	484	V1	14	#9	1	10'-2"	484	V1	14	#9	1	10'-2"	484	V1	14	#9	1	10'-2"	484
V2	14	#9	STR.	25'-11"	1,234	V2	14	#9	STR.	26'-1"	1,242	V2	14	#9	STR.	26'-7"	1,265	V2	14	#9	STR.	26'-7"	1,265
V3	4	#4	STR.	6'-8"	18	V3	4	#4	STR.	6'-8"	18	V3	4	#4	STR.	6'-8"	18	V3	4	#4	STR.	6'-8"	18
V4	11	#9	1	15'-6"	580	V4	11	#9	1	15'-6"	580	V4	11	#9	1	9'-6"	355	V4	11	#9	1	9'-6"	355
REINFORCING STEEL 3,393 LBS.						REINFORCING STEEL 3,401 LBS.						REINFORCING STEEL 3,099 LBS.						REINFORCING STEEL 3,099 LBS.					
STRUCTURE ID T15 IN (RIGHT COLUMN)						STRUCTURE ID T15 OUT (RIGHT COLUMN)						STRUCTURE ID T16 IN (RIGHT COLUMN)						STRUCTURE ID T16 OUT (RIGHT COLUMN)					
BAR	NO.	SIZE	TYPE	LENGTH	WEIGHT	BAR	NO.	SIZE	TYPE	LENGTH	WEIGHT	BAR	NO.	SIZE	TYPE	LENGTH	WEIGHT	BAR	NO.	SIZE	TYPE	LENGTH	WEIGHT
B1	14	#5	STR.	2'-0"	29	B1	14	#5	STR.	2'-0"	29	B1	14	#5	STR.	2'-0"	29	B1	14	#5	STR.	2'-0"	29
B2	4	#5	STR.	5'-8"	24	B2	4	#5	STR.	5'-8"	24	B2	4	#5	STR.	5'-8"	24	B2	4	#5	STR.	5'-8"	24
B3	6	#5	STR.	3'-6"	22	B3	6	#5	STR.	3'-6"	22	B3	6	#5	STR.	3'-6"	22	B3	6	#5	STR.	3'-6"	22
S1	30	#4	2	10'-9"	215	S1	30	#4	2	10'-9"	215	S1	30	#4	2	10'-9"	215	S1	30	#4	2	10'-9"	215
S2	30	#4	2	12'-5"	249	S2	30	#4	2	12'-5"	249	S2	30	#4	2	12'-5"	249	S2	30	#4	2	12'-5"	249
S3	60	#4	3	1'-10"	73	S3	60	#4	3	1'-10"	73	S3	60	#4	3	1'-10"	73	S3	60	#4	3	1'-10"	73
S4	30	#4	3	3'-1"	62	S4	30	#4	3	3'-1"	62	S4	30	#4	3	3'-1"	62	S4	30	#4	3	3'-1"	62
S5	25	#5	4	9'-6"	248	S5	25	#5	4	9'-6"	248	S5	19	#5	4	9'-6"	188	S5	19	#5	4	9'-6"	188
S6	5	#5	2	19'-3"	100	S6	5	#5	2	19'-3"	100	S6	5	#5	2	19'-3"	100	S6	5	#5	2	19'-3"	100
U1	18	#4	5	6'-2"	74	U1	18	#4	5	6'-2"	74	U1	18	#4	5	6'-2"	74	U1	18	#4	5	6'-2"	74
V1	14	#9	1	10'-2"	484	V1	14	#9	1	10'-2"	484	V1	14	#9	1	10'-2"	484	V1	14	#9	1	10'-2"	484
V2	14	#9	STR.	26'-11"	1,281	V2	14	#9	STR.	26'-10"	1,277	V2	14	#9	STR.	26'-8"	1,269	V2	14	#9	STR.	27'-0"	1,285
V3	4	#4	STR.	6'-8"	18	V3	4	#4	STR.	6'-8"	18	V3	4	#4	STR.	6'-8"	18	V3	4	#4	STR.	6'-8"	18
V4	11	#9	1	15'-6"	580	V4	11	#9	1	15'-6"	580	V4	11	#9	1	12'-6"	468	V4	11	#9	1	12'-6"	468
REINFORCING STEEL 3,459 LBS.						REINFORCING STEEL 3,455 LBS.						REINFORCING STEEL 3,275 LBS.						REINFORCING STEEL 3,291 LBS.					

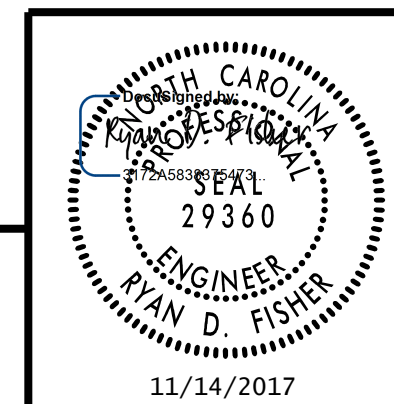


PROJECT NO. U-5315 A & B  
WAKE COUNTY

STATION: \_\_\_\_\_

SHEET 1 OF 2

STATE OF NORTH CAROLINA  
 DEPARTMENT OF TRANSPORTATION  
 RALEIGH  
**OVERHEAD STRUCTURES**  
 BILL OF MATERIAL  
 OVERHEAD GANTRY STRUCTURES



**RK&K**  
 RUMMEL, KLEPPER & KAHL, LLP  
 900 RIDGEFIELD DRIVE SUITE 350  
 RALEIGH, NC 27609-3960 (919) 878-9560  
 NC LICENSE NUMBER: F-0112

REVISIONS				SHEET NO.	
NO.	BY:	DATE:	NO.	BY:	DATE:
1			3		
2			4		

TOTAL SHEETS  
**12**

**DOCUMENT NOT CONSIDERED FINAL  
 UNLESS ALL SIGNATURES COMPLETED**

11/13/2017 R:\DGN\11050\_SD\_OHS\_010.dgn

DRAWN BY : B. A. HAAG DATE : AUG 2017  
 CHECKED BY : R. D. FISHER DATE : AUG 2017  
 DESIGN ENGINEER OF RECORD : R. D. FISHER DATE : AUG 2017