

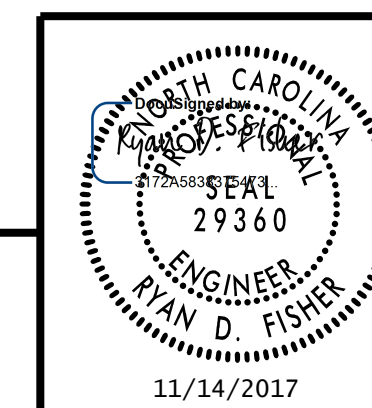
CONCRETE QUANTITIES					
STRUCTURE ID "A" (LEFT COLUMN)			STRUCTURE ID "D" (LEFT COLUMN)		
DRILLED PIER CONCRETE			DRILLED PIER CONCRETE		
POUR #1 - DRILLED PIER	CU. YDS.	2.9	POUR #1 - DRILLED PIER	CU. YDS.	6.1
CLASS "A" CONCRETE BREAKDOWN			CLASS "A" CONCRETE BREAKDOWN		
POUR #2 - FOOTING	CU. YDS.	2.6	POUR #2 - FOOTING	CU. YDS.	2.6
POUR #3 - COLUMN	CU. YDS.	13.6	POUR #3 - COLUMN	CU. YDS.	14.0
TOTAL CLASS "A" CONCRETE	CU. YDS.	16.2	TOTAL CLASS "A" CONCRETE	CU. YDS.	16.6
STRUCTURE ID "A" (RIGHT COLUMN)			STRUCTURE ID "D" (RIGHT COLUMN)		
DRILLED PIER CONCRETE			DRILLED PIER CONCRETE		
POUR #1 - DRILLED PIER	CU. YDS.	2.5	POUR #1 - DRILLED PIER	CU. YDS.	3.9
CLASS "A" CONCRETE BREAKDOWN			CLASS "A" CONCRETE BREAKDOWN		
POUR #2 - FOOTING	CU. YDS.	2.6	POUR #2 - FOOTING	CU. YDS.	2.6
POUR #3 - COLUMN	CU. YDS.	13.9	POUR #3 - COLUMN	CU. YDS.	15.5
TOTAL CLASS "A" CONCRETE	CU. YDS.	16.5	TOTAL CLASS "A" CONCRETE	CU. YDS.	18.1
STRUCTURE ID "C" (LEFT COLUMN)			STRUCTURE ID "F" (LEFT COLUMN)		
DRILLED PIER CONCRETE			DRILLED PIER CONCRETE		
POUR #1 - DRILLED PIER	CU. YDS.	2.9	POUR #1 - DRILLED PIER	CU. YDS.	4.6
CLASS "A" CONCRETE BREAKDOWN			CLASS "A" CONCRETE BREAKDOWN		
POUR #2 - FOOTING	CU. YDS.	2.6	POUR #2 - FOOTING	CU. YDS.	2.6
POUR #3 - COLUMN	CU. YDS.	13.6	POUR #3 - COLUMN	CU. YDS.	14.9
TOTAL CLASS "A" CONCRETE	CU. YDS.	16.2	TOTAL CLASS "A" CONCRETE	CU. YDS.	17.5
STRUCTURE ID "C" (RIGHT COLUMN)			STRUCTURE ID "F" (RIGHT COLUMN)		
DRILLED PIER CONCRETE			DRILLED PIER CONCRETE		
POUR #1 - DRILLED PIER	CU. YDS.	2.9	POUR #1 - DRILLED PIER	CU. YDS.	5.3
CLASS "A" CONCRETE BREAKDOWN			CLASS "A" CONCRETE BREAKDOWN		
POUR #2 - FOOTING	CU. YDS.	2.6	POUR #2 - FOOTING	CU. YDS.	2.6
POUR #3 - COLUMN	CU. YDS.	14.2	POUR #3 - COLUMN	CU. YDS.	14.0
TOTAL CLASS "A" CONCRETE	CU. YDS.	16.8	TOTAL CLASS "A" CONCRETE	CU. YDS.	16.6

PROJECT NO. U-5315 A & B
WAKE COUNTY

STATION: _____

SHEET 2 OF 2

STATE OF NORTH CAROLINA
 DEPARTMENT OF TRANSPORTATION
 RALEIGH
OVERHEAD STRUCTURES
 BILL OF MATERIAL
 OVERHEAD SIGN STRUCTURES



RK&K
 RUMMEL, KLEPPER & KAHL, LLP
 900 RIDGEFIELD DRIVE SUITE 350
 RALEIGH, NC 27609-3960 (919) 878-9560
 NC LICENSE NUMBER: F-0112

REVISIONS				SHEET NO.		
NO.	BY:	DATE:	NO.	BY:	DATE:	TOTAL SHEETS
1			3			12
2			4			

**DOCUMENT NOT CONSIDERED FINAL
 UNLESS ALL SIGNATURES COMPLETED**

11/13/2017 R:\DGN\11050_SD_OHS_009.dgn

DRAWN BY : B. A. HAAG DATE : AUG 2017
 CHECKED BY : R. D. FISHER DATE : AUG 2017
 DESIGN ENGINEER OF RECORD : R. D. FISHER DATE : AUG 2017