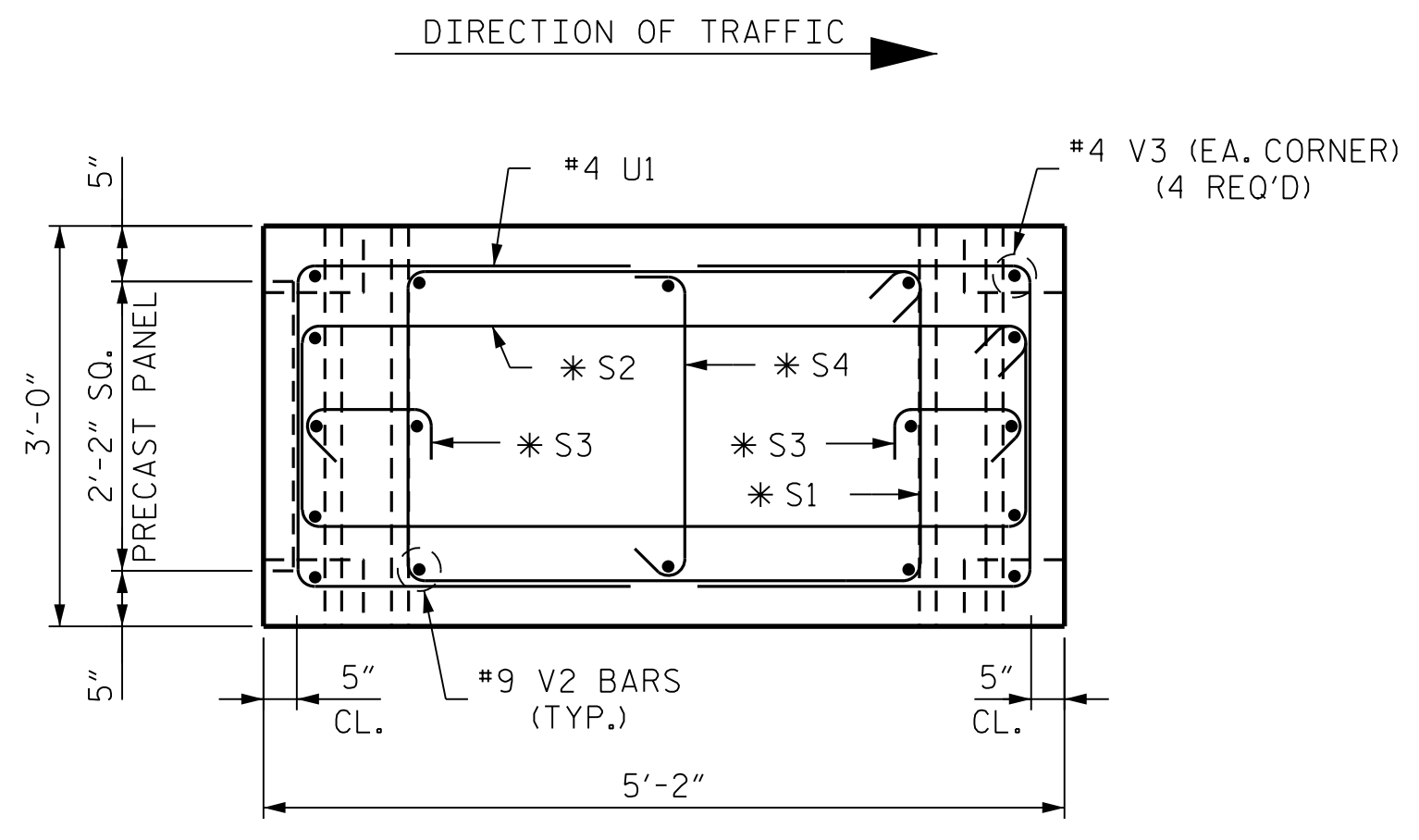


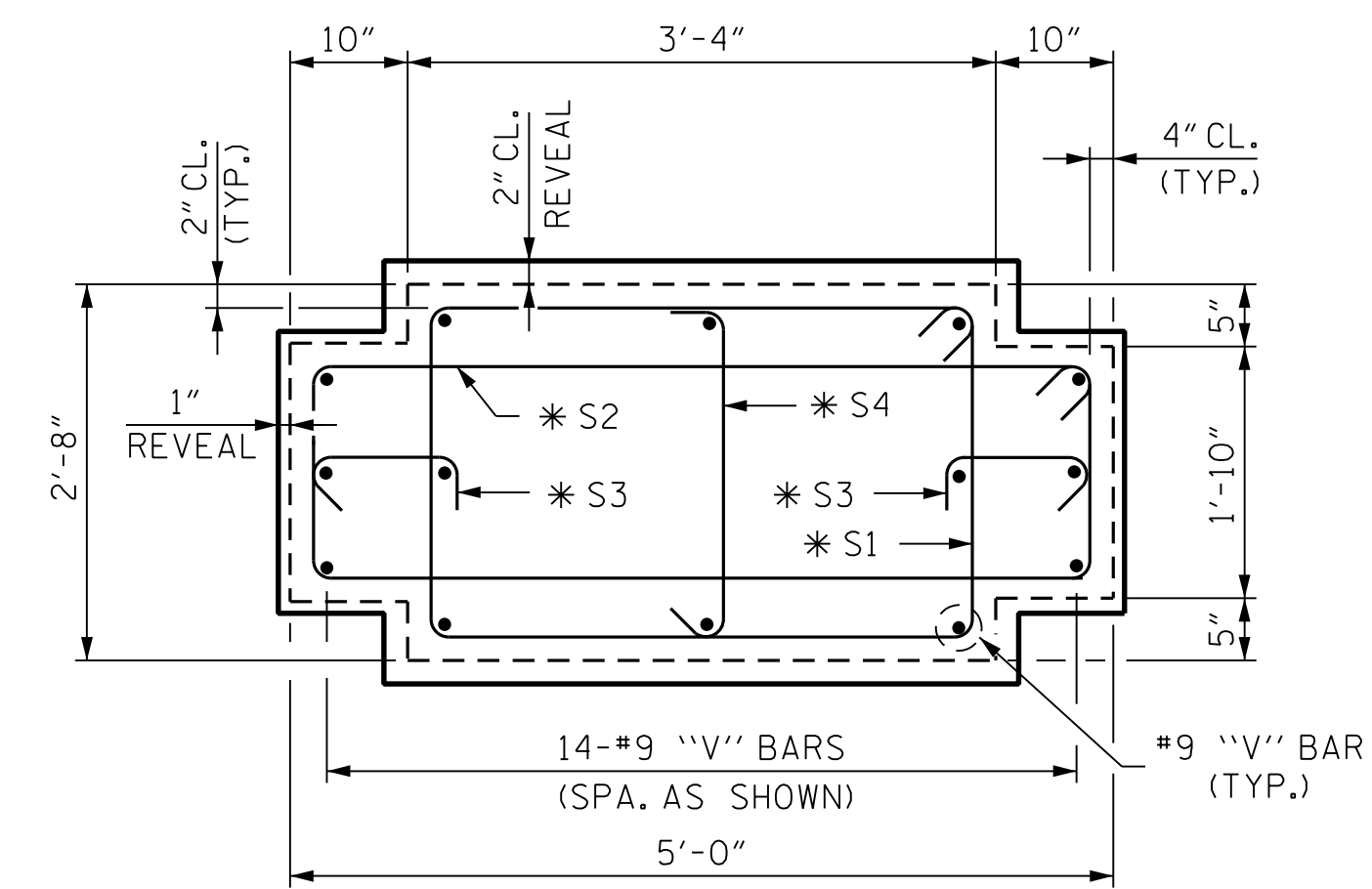
COLUMN ELEVATION

NOTE:
OMIT COLUMN CAP AND PRECAST PANEL WITH DOGWOOD FLOWER LOGO ON COLUMNS FOR BUTTERFLY OVERHEAD SIGNS.
**#4 "S" BARS @ 1'-0"CTS. - OVERHEAD SIGN AND BUTTERFLY

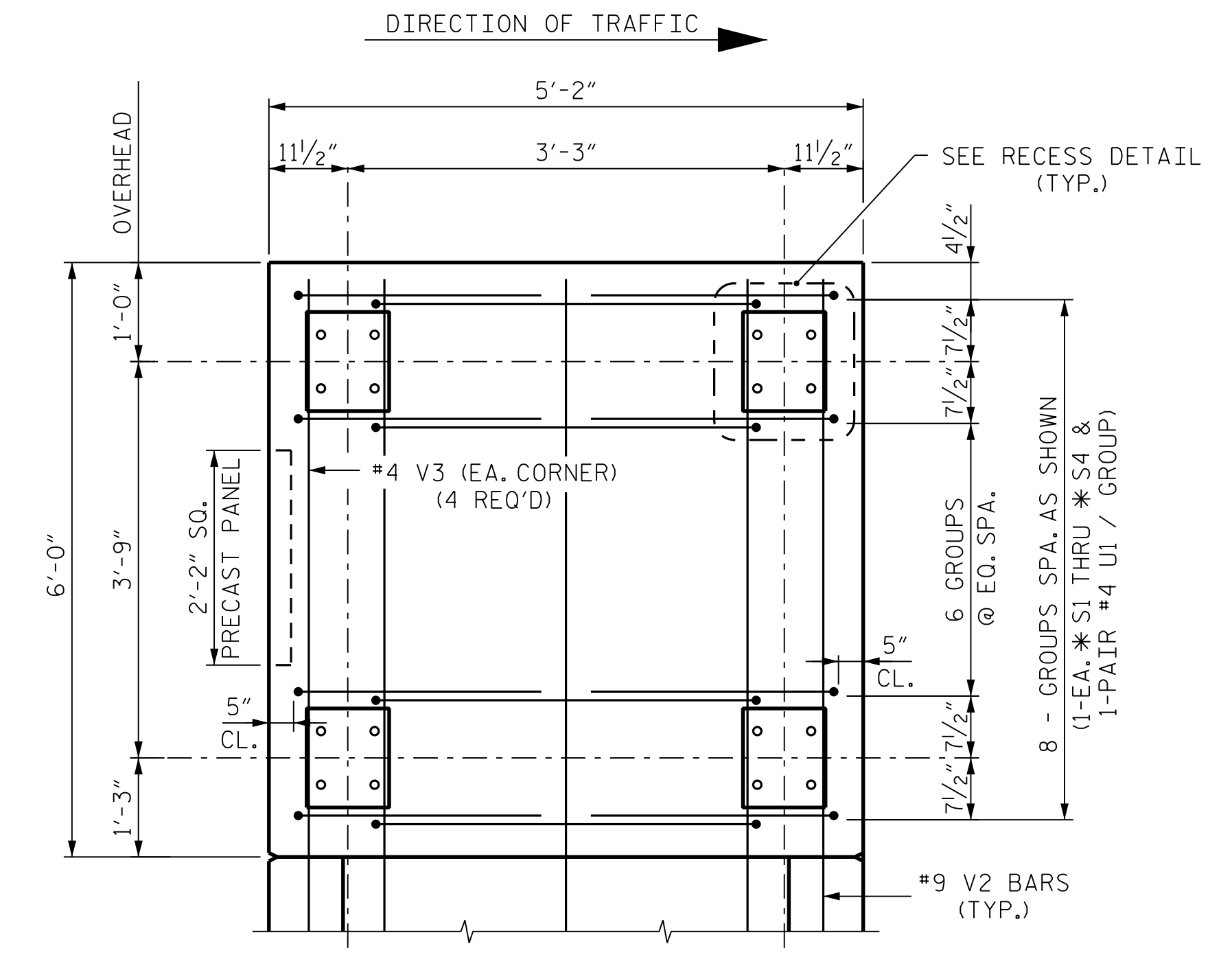


SECTION A-A

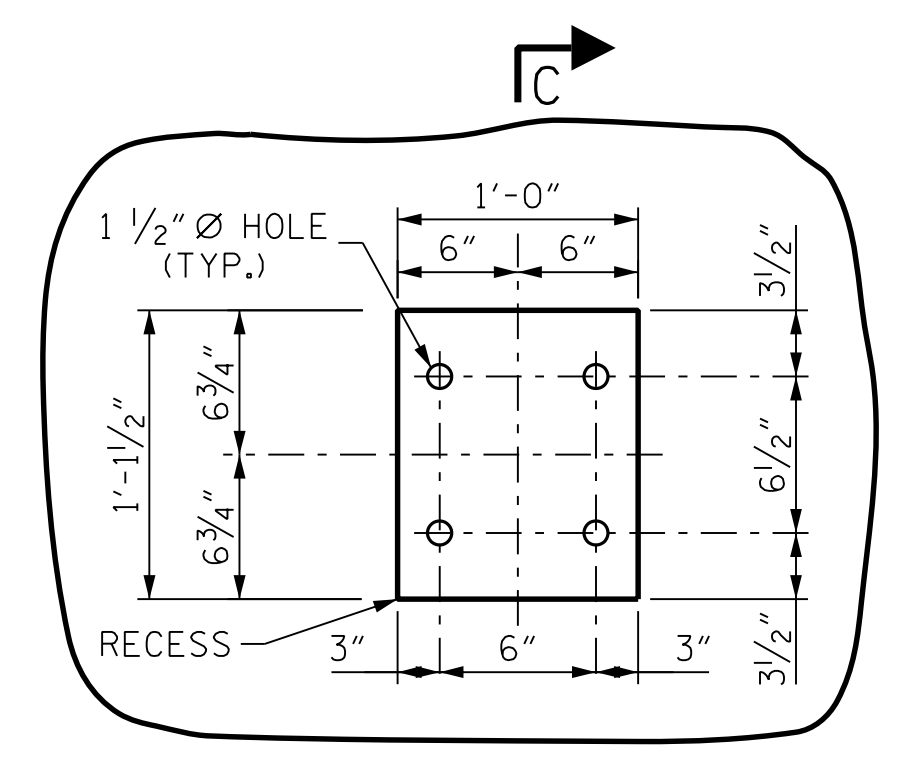
NOTE:
BAR SIZES INDICATED BY AN ASTERISK (*), INDICATES SIZE VARIES BY LOCATION AS FOLLOWS:
#4 "S" BARS - OVERHEAD SIGNS AND BUTTERFLY COLUMNS



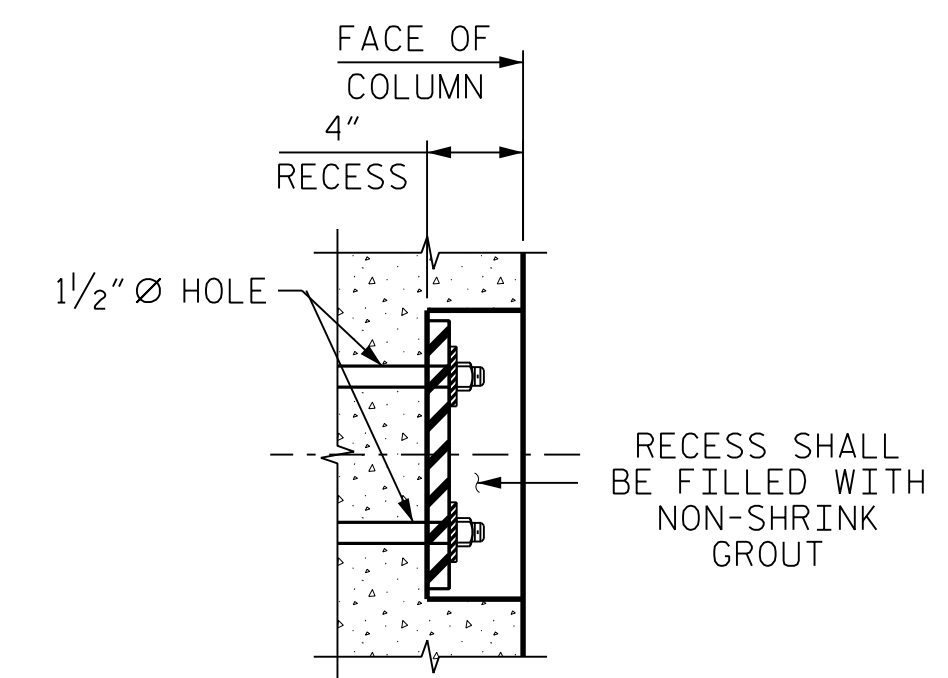
SECTION B-B



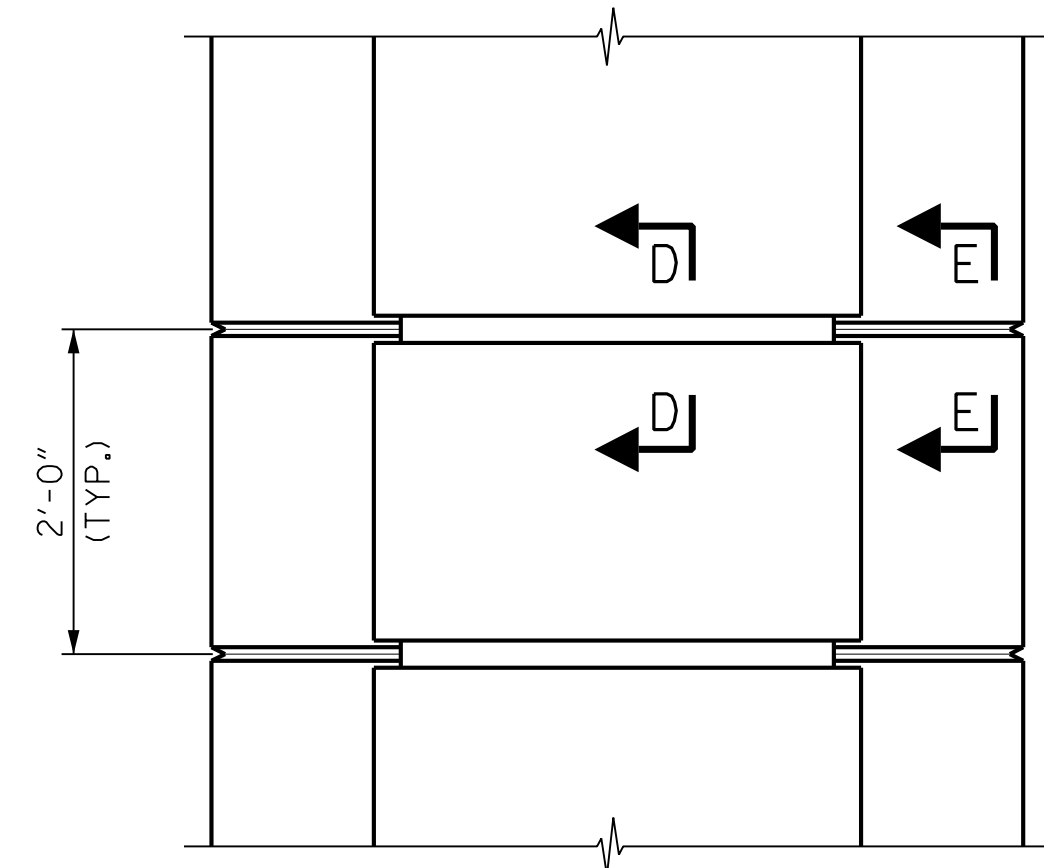
CAP ELEVATION



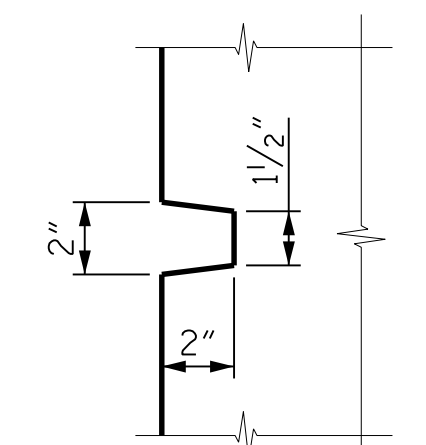
RECESS DETAIL



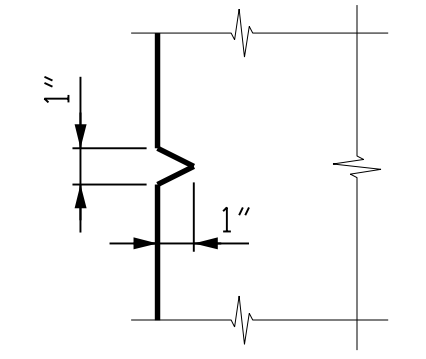
SECTION C-C



COLUMN RUSTICATION DETAILS



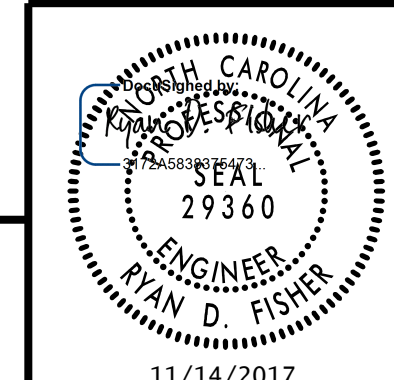
SECTION D-D (2" REVEAL)



SECTION E-E (1" REVEAL)

PROJECT NO. U-5315 A & B
WAKE COUNTY
STATION: _____
SHEET 1 OF 2

STATE OF NORTH CAROLINA
DEPARTMENT OF TRANSPORTATION
RALEIGH
OVERHEAD STRUCTURES
COLUMN REINFORCING DETAILS-
OVERHEAD AND PEDESTAL



RK&K
RUMMEL, KLEPPER & KAHL, LLP
900 RIDGEFIELD DRIVE SUITE 350
RALEIGH, NC 27609-3960 (919) 878-9560
NC LICENSE NUMBER: F-0112

REVISIONS				SHEET NO.	
NO.	BY:	DATE:	NO.	BY:	DATE:
1			3		
2			4		

**DOCUMENT NOT CONSIDERED FINAL
UNLESS ALL SIGNATURES COMPLETED**

11/13/2017 R:\DGN\11050_SD_OHS_005.dgn

DRAWN BY : B. A. HAAG DATE : AUG 2017
CHECKED BY : R. D. FISHER DATE : AUG 2017
DESIGN ENGINEER OF RECORD : R. D. FISHER DATE : AUG 2017

TOTAL SHEETS
12