

TYPICAL BUTTERFLY STRUCTURE
(LOOKING IN THE DIRECTION OF TRAFFIC)

NOTES:

ONLY FOUNDATION AND COLUMN DESIGNS ARE PROVIDED IN THESE PLANS. THE CONTRACTOR IS RESPONSIBLE FOR THE DESIGN AND SHOP DRAWINGS OF THE OVERHEAD SIGN AND GANTRY TRUSS STRUCTURES.

CONNECTIONS BY OTHERS.

COLUMNS AND FOUNDATIONS DESIGNED FOR THE EFFECTS OF DEAD, WIND AND ICE LOADS IN ACCORDANCE WITH AASHTO STANDARD SPECIFICATIONS FOR STRUCTURAL SUPPORTS FOR HIGHWAY SIGNS, LUMINARIES AND TRAFFIC SIGNALS (90 MPH WIND SPEED).

FOR OVERHEAD AND DYNAMIC MESSAGE SIGN FOUNDATIONS SEE SPECIAL PROVISIONS.

FOR OVERHEAD SIGN AND GANTRY SUPPORTS SEE SPECIAL PROVISIONS.

CLASS 'A' CONCRETE SHALL BE USED IN COLUMNS, FOOTINGS, CAPS AND GRADE BEAMS.

'DRILLED PIER' CONCRETE SHALL BE USED IN DRILLED PIERS WHERE REQUIRED.

DEFORMED STEEL BAR REINFORCMENT SHALL CONFORM TO AASHTO M31 GRADE 60.

CONTRACTOR SHALL VERIFY COLUMN HEIGHTS AND MINIMUM VERTICAL CLEARANCE PRIOR TO CONSTRUCTION. COLUMN HEIGHTS AND FOOTING ELEVATIONS MAY BE ADJUSTED WITH APPROVAL OF THE ENGINEER.

VERIFY THE LOCATION OF UNDERGROUND UTILITIES AND DRAINAGE STRUCTURES BEFORE DRILLING HOLES TO ENSURE SUFFICIENT CLEARANCE IS AVAILABLE.

COLUMN

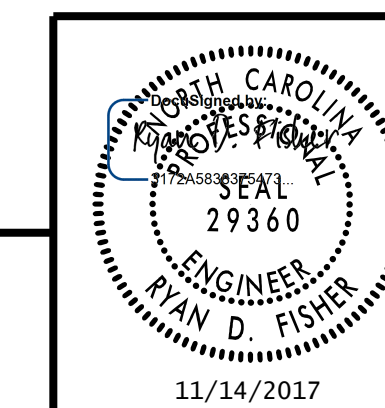
STRUCTURE ID	STATION	LOCATION	OFFSET	NORTHING	EASTING	FOUNDATION TYPE *	COLUMN HEIGHT	ELEV. F	VAR 'FA' **	VAR 'FB' **	VAR 'FC' **	VAR 'FF' **	VAR 'FG' **	VAR 'FH' **	VAR 'FJ' **
B	527+50.00	-NC540-	103' RT.	744,997.8297	2,032,778.7141	B1	23'-1"	327.65	14'-0"	3'-6"	14	6"	2'-6"	4'-6"	6'-2"
E	655+00.00	-NC540-	97' LT.	757,591.6894	2,031,827.4831	B1	21'-6"	349.94	7'-0"	3'-6"	14	6"	2'-6"	4'-6"	6'-2"

TYPE B1 = SINGLE DRILLED SHAFT FOUNDATION

** SEE "FOUNDATION DETAILS SHEET"

PROJECT NO. U-5315 A & B
 WAKE COUNTY
 STATION: _____

STATE OF NORTH CAROLINA
 DEPARTMENT OF TRANSPORTATION
 RALEIGH
OVERHEAD STRUCTURES
 BUTTERFLY OVERHEAD
 SIGN STRUCTURES
 DATA TABLE



RK&K
 RUMMEL, KLEPPER & KAHL, LLP
 900 RIDGEFIELD DRIVE SUITE 350
 RALEIGH, NC 27609-3960 (919) 878-9560
 NC LICENSE NUMBER: F-0112

11/14/2017

REVISIONS						SHEET NO.
NO.	BY:	DATE:	NO.	BY:	DATE:	SIGN-24
1			3			TOTAL SHEETS
2			4			12

**DOCUMENT NOT CONSIDERED FINAL
 UNLESS ALL SIGNATURES COMPLETED**

11/13/2017 R:\DGN\11050_SD_OHS_004.dgn

DRAWN BY : B. A. HAAG DATE : AUG 2017
 CHECKED BY : R. D. FISHER DATE : AUG 2017
 DESIGN ENGINEER OF RECORD : R. D. FISHER DATE : AUG 2017