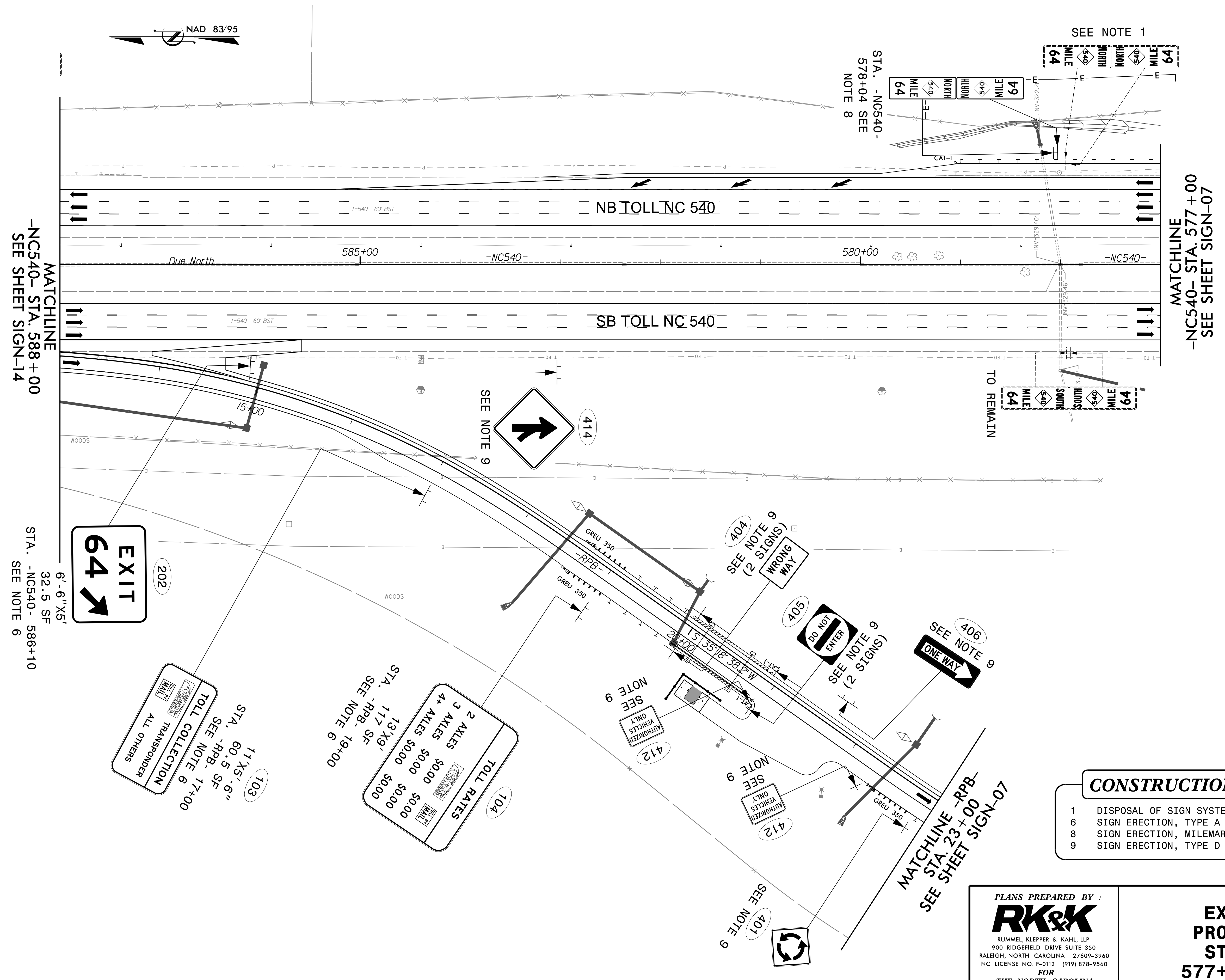


TIP NO. U-5315 A&B	SHEET NO. SIGN-15
APPROVED: _____	
DATE: _____	
SEAL	
<small>DocuSigned by: Barry Brandt 11/13/2017</small>	
DOCUMENT NOT CONSIDERED FINAL UNLESS ALL SIGNATURES COMPLETED	



- CONSTRUCTION NOTES**
- DISPOSAL OF SIGN SYSTEM, U-CHANNEL
 - SIGN ERECTION, TYPE A (GROUND MOUNTED)
 - SIGN ERECTION, MILEMARKERS
 - SIGN ERECTION, TYPE D OR E

PLANS PREPARED BY:
RK&K
 RUMMEL, KLEPPER & KAHL, LLP
 900 RIDGEFIELD DRIVE SUITE 350
 RALEIGH, NORTH CAROLINA 27609-3960
 NC LICENSE NO. F-0112 (919) 878-9560
 FOR
 THE NORTH CAROLINA
 TURNPIKE AUTHORITY

**EXISTING AND
 PROPOSED SIGNS
 STA. -NC540-
 577+00 TO 588+00**

10/13/2017
 R:\Triflic\Signing\CADD\Signing Layout Plans\Pages\U5315_sgn_5-15.dgn
 NUM