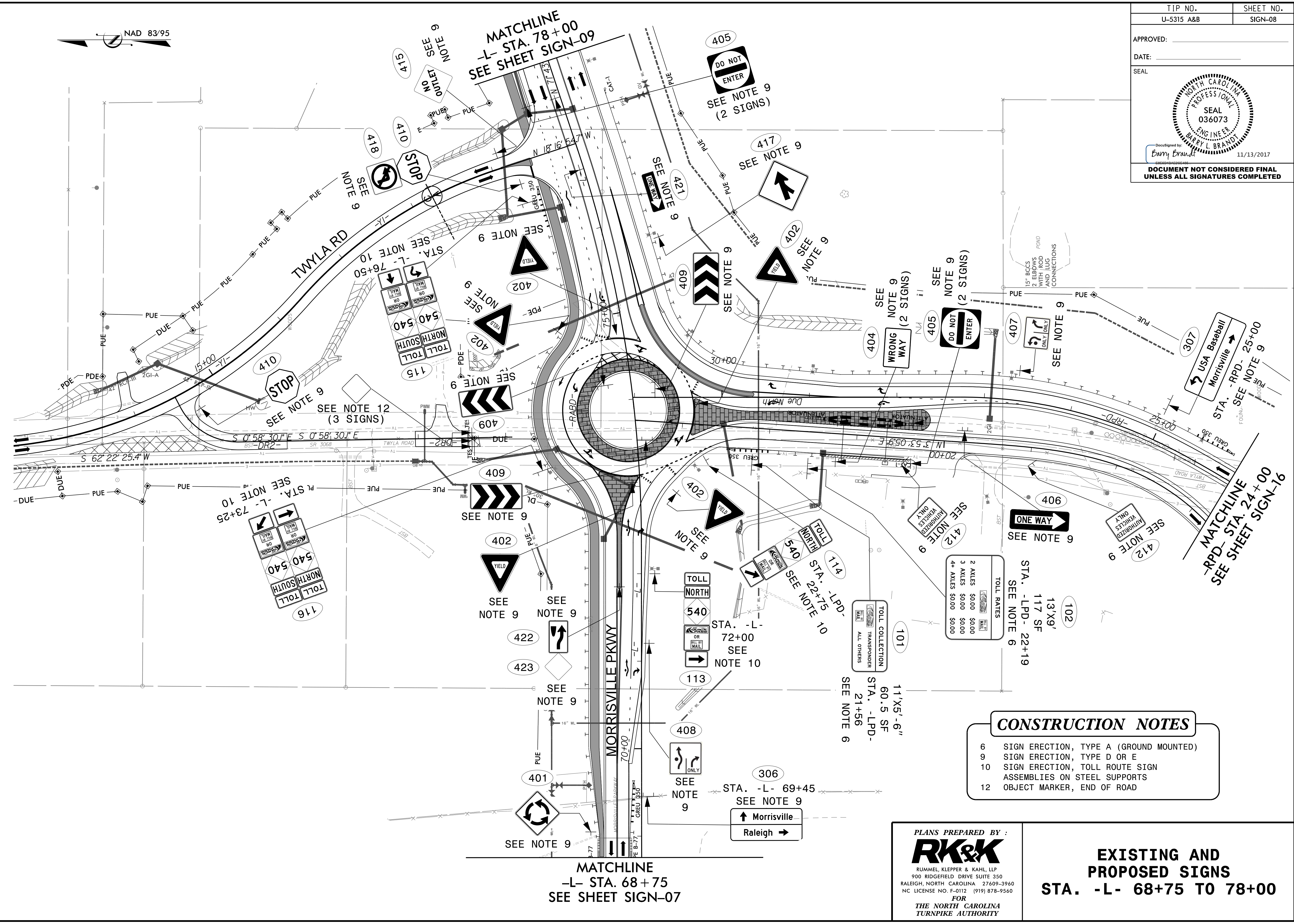
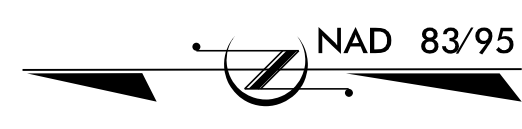


TIP NO. U-5315 A&B	SHEET NO. SIGN-08
APPROVED: _____	
DATE: _____	
SEAL	
DocuSigned by: <i>Barry Brandt</i> 11/13/2017	
<b>DOCUMENT NOT CONSIDERED FINAL UNLESS ALL SIGNATURES COMPLETED</b>	



**CONSTRUCTION NOTES**

- 6 SIGN ERECTION, TYPE A (GROUND MOUNTED)
- 9 SIGN ERECTION, TYPE D OR E
- 10 SIGN ERECTION, TOLL ROUTE SIGN ASSEMBLIES ON STEEL SUPPORTS
- 12 OBJECT MARKER, END OF ROAD

PLANS PREPARED BY:  
**RK&K**  
 RUMMEL, KLEPPER & KAHL, LLP  
 900 RIDGEFIELD DRIVE SUITE 350  
 RALEIGH, NORTH CAROLINA 27609-3960  
 NC LICENSE NO. F-0112 (919) 878-9560  
 FOR  
 THE NORTH CAROLINA  
 TURNPIKE AUTHORITY

**EXISTING AND  
PROPOSED SIGNS  
STA. -L- 68+75 TO 78+00**

10/13/2017  
 R:\Traffic\Signing\CADD\Signing\_Layout\_Plans\Pages\U5315\_sgn\_S-08.dgn  
 NJM