

MATCHLINE
-L- STA. 68+75
SEE SHEET SIGN-08

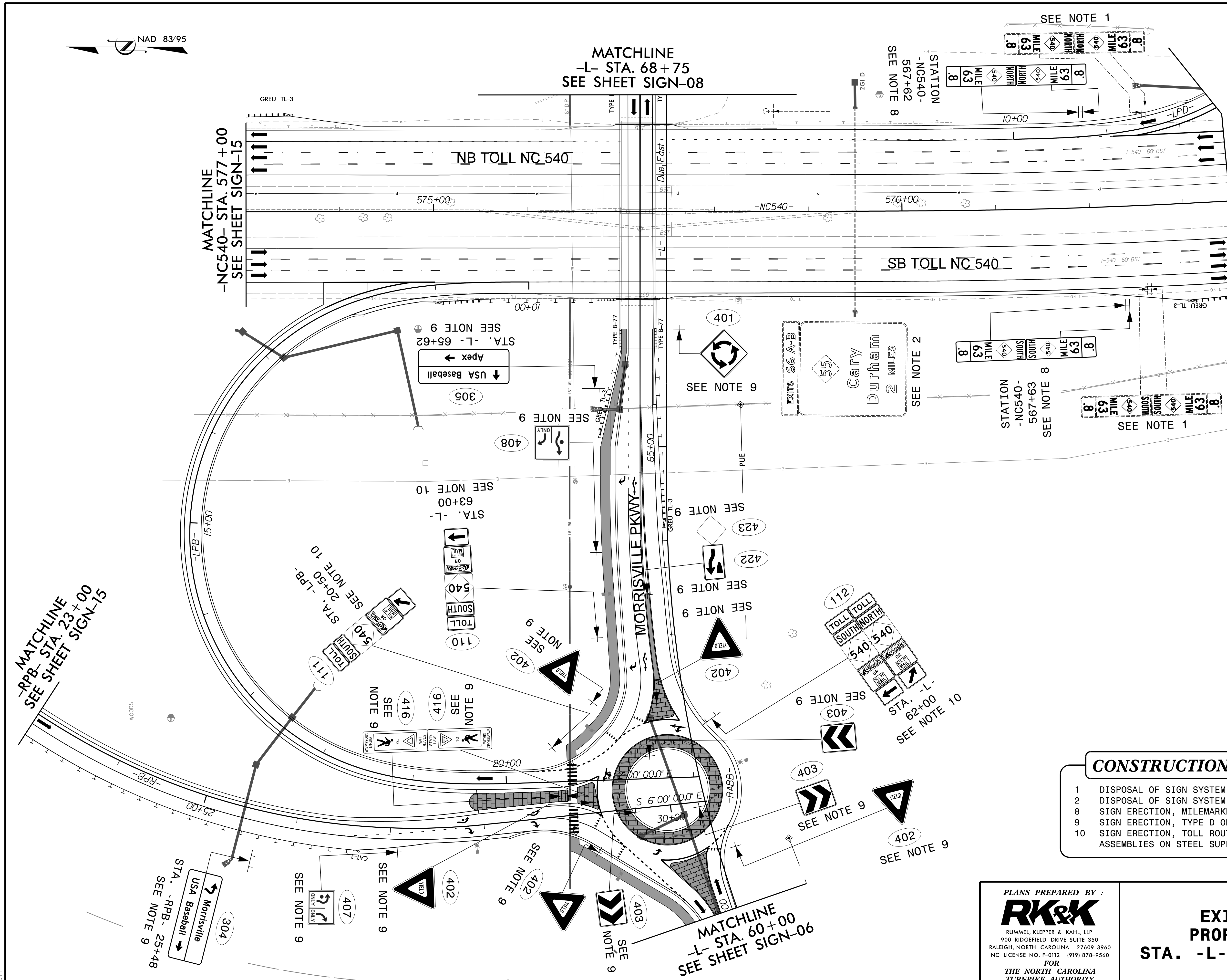
MATCHLINE
-NC540- STA. 577+00
SEE SHEET SIGN-15

MATCHLINE
-NC540- STA. 566+50
SEE SHEET SIGN-16

MATCHLINE
-RPB- STA. 23+00
SEE SHEET SIGN-15

MATCHLINE
-L- STA. 60+00
SEE SHEET SIGN-06

TIP NO. U-5315 A&B	SHEET NO. SIGN-07
APPROVED: _____	
DATE: _____	
SEAL	
<small>DocuSigned by: Barry Brandt 11/13/2017</small>	
DOCUMENT NOT CONSIDERED FINAL UNLESS ALL SIGNATURES COMPLETED	



- CONSTRUCTION NOTES**
- DISPOSAL OF SIGN SYSTEM, U-CHANNEL
 - DISPOSAL OF SIGN SYSTEM, OVERHEAD
 - SIGN ERECTION, MILEMARKERS
 - SIGN ERECTION, TYPE D OR E
 - SIGN ERECTION, TOLL ROUTE SIGN ASSEMBLIES ON STEEL SUPPORTS

PLANS PREPARED BY :

RK&K

RUMMEL, KLEPPER & KAHL, LLP
 900 RIDGEFIELD DRIVE SUITE 350
 RALEIGH, NORTH CAROLINA 27609-3960
 NC LICENSE NO. F-0112 (919) 878-9560

FOR
 THE NORTH CAROLINA
 TURNPIKE AUTHORITY

**EXISTING AND
 PROPOSED SIGNS**

STA. -L- 60+00 TO 68+75

R:\Projects\Signing\CADD\Signing_Layout_Plans\Pages\5315_sgn_s-07.dgn
 11/13/2017
 NMT