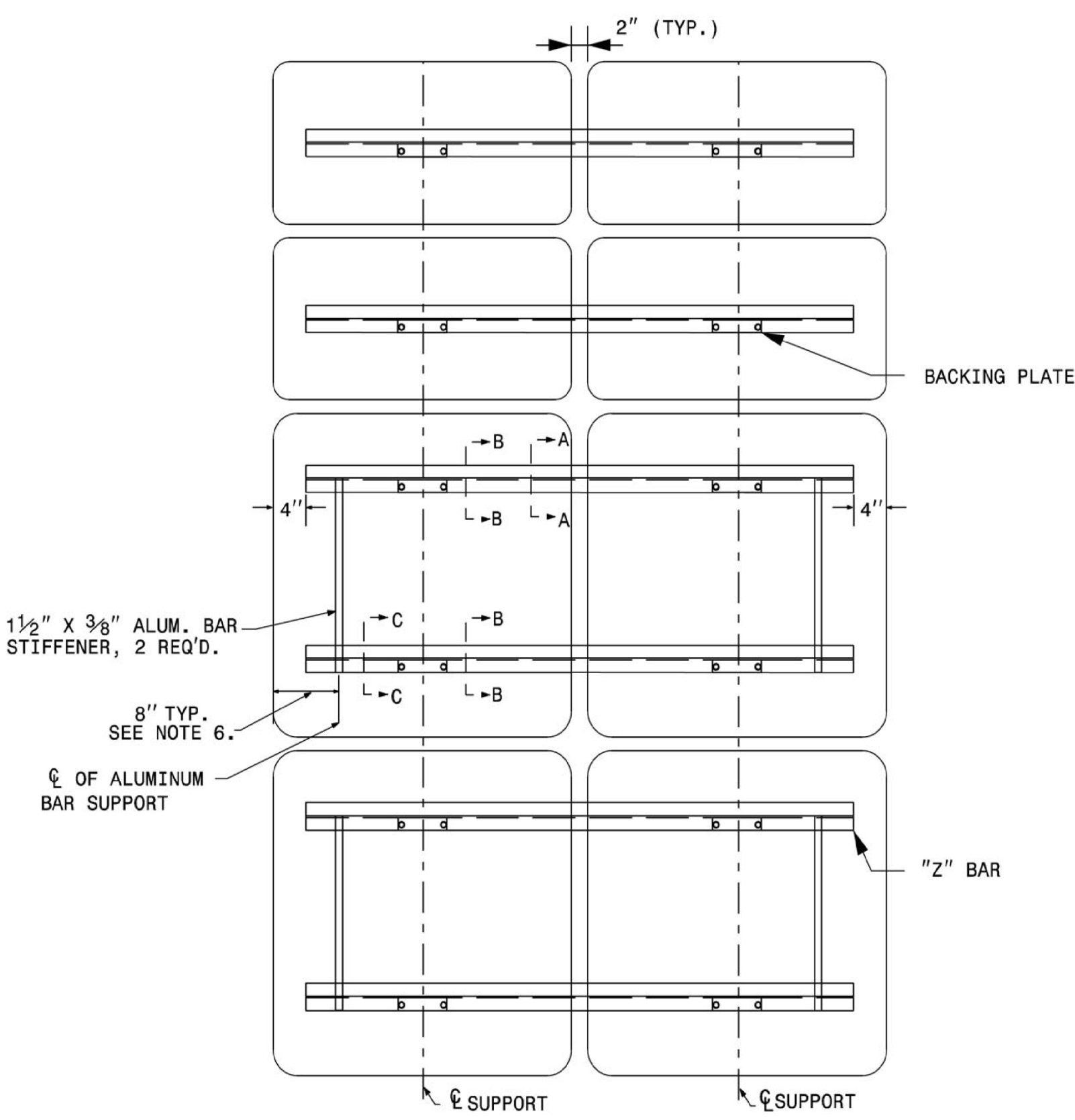
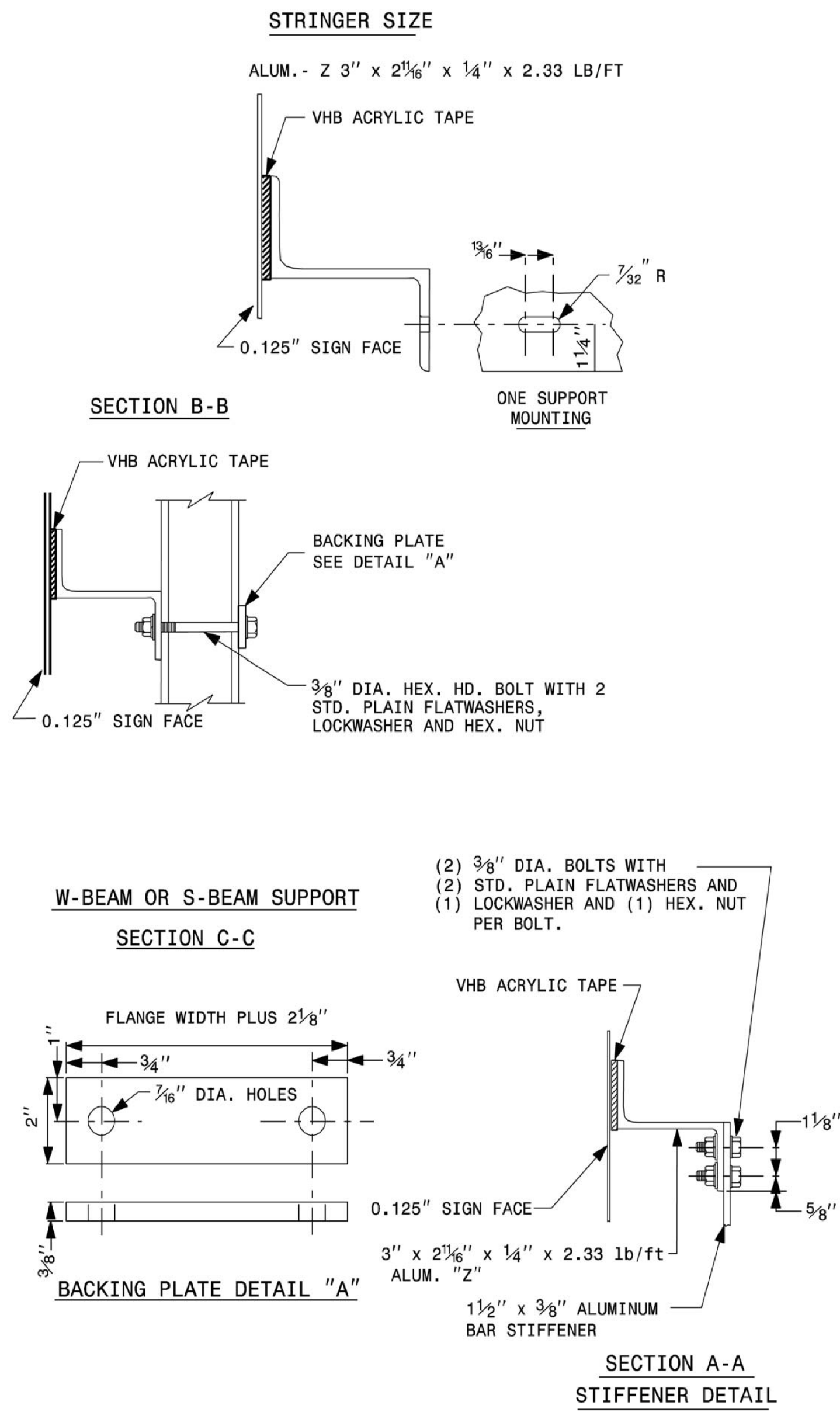


TIP NO. U-5315 A&B	SHEET NO. SIGN-02G
APPROVED: _____	
DATE: _____	
SEAL	
<small>DocuSigned by: Barry Brandt 11/13/2017</small>	
DOCUMENT NOT CONSIDERED FINAL UNLESS ALL SIGNATURES COMPLETED	

8-16 STATE OF NORTH CAROLINA
 DEPT. OF TRANSPORTATION
 DIVISION OF HIGHWAYS
 RALEIGH, N.C.

ENGLISH STANDARD DRAWING FOR
VHB TAPE CONSTRUCTION
 FOR TYPE 'B' ROUTE SIGN
 ASSEMBLIES WITH STEEL SUPPORTS

SHEET 1 OF 1
901.40



1. USE NUMBER AND SIZE OF SUPPORTS AS SHOWN ON SUPPORT CHART IN PROJECT PLAN SHEETS.
2. SEE NCDOT STANDARD SPECIFICATIONS FOR ROADS AND STRUCTURES FOR TYPE OF MATERIAL TO BE USED FOR SIGN PANELS, HANGER ASSEMBLIES, AND SUPPORT.
3. FURNISH ALL MOUNTING HARDWARE.
4. USE GALVANIZED STEEL FOR BACKING PLATES AND MOUNTING BOLTS.
5. THE VERTICAL DIMENSION BETWEEN PRIMARY AND SECONDARY SIGNS IS ONE (1) INCH.
6. ADJUST STIFFENERS TO AVOID CONFLICT WITH SUPPORTS.
7. FABRICATE EACH SIGN WITH AN APPROVED VHB ACRYLIC TAPE WITH FULL FACE CONTACT BETWEEN "Z" BARS AND SIGN PANELS AND BETWEEN SPLICE PLATES AND SIGN PANELS.
8. SEE ROADWAY STANDARD 901.70 FOR SUPPORT AND "Z" BAR SPACING.

8-16 STATE OF NORTH CAROLINA
 DEPT. OF TRANSPORTATION
 DIVISION OF HIGHWAYS
 RALEIGH, N.C.

ENGLISH STANDARD DRAWING FOR
VHB TAPE CONSTRUCTION
 FOR TYPE 'B' ROUTE SIGN
 ASSEMBLIES WITH STEEL SUPPORTS

SHEET 1 OF 1
901.40

9/11/2017 R:\Trafic\Signing\CADD\Signing_Layout_Plans\Pages\5315_sgn_5-02G.dgn NJM

PLANS PREPARED BY :

RK&K

RUMMEL, KLEPPER & KAHL, LLP
 900 RIDGEFIELD DRIVE SUITE 350
 RALEIGH, NORTH CAROLINA 27609-3960
 NC LICENSE NO. F-0112 (919) 878-9560

FOR
 THE NORTH CAROLINA
 TURNPIKE AUTHORITY

**REVISED SIGNING
ROADWAY STANDARD DRAWING**