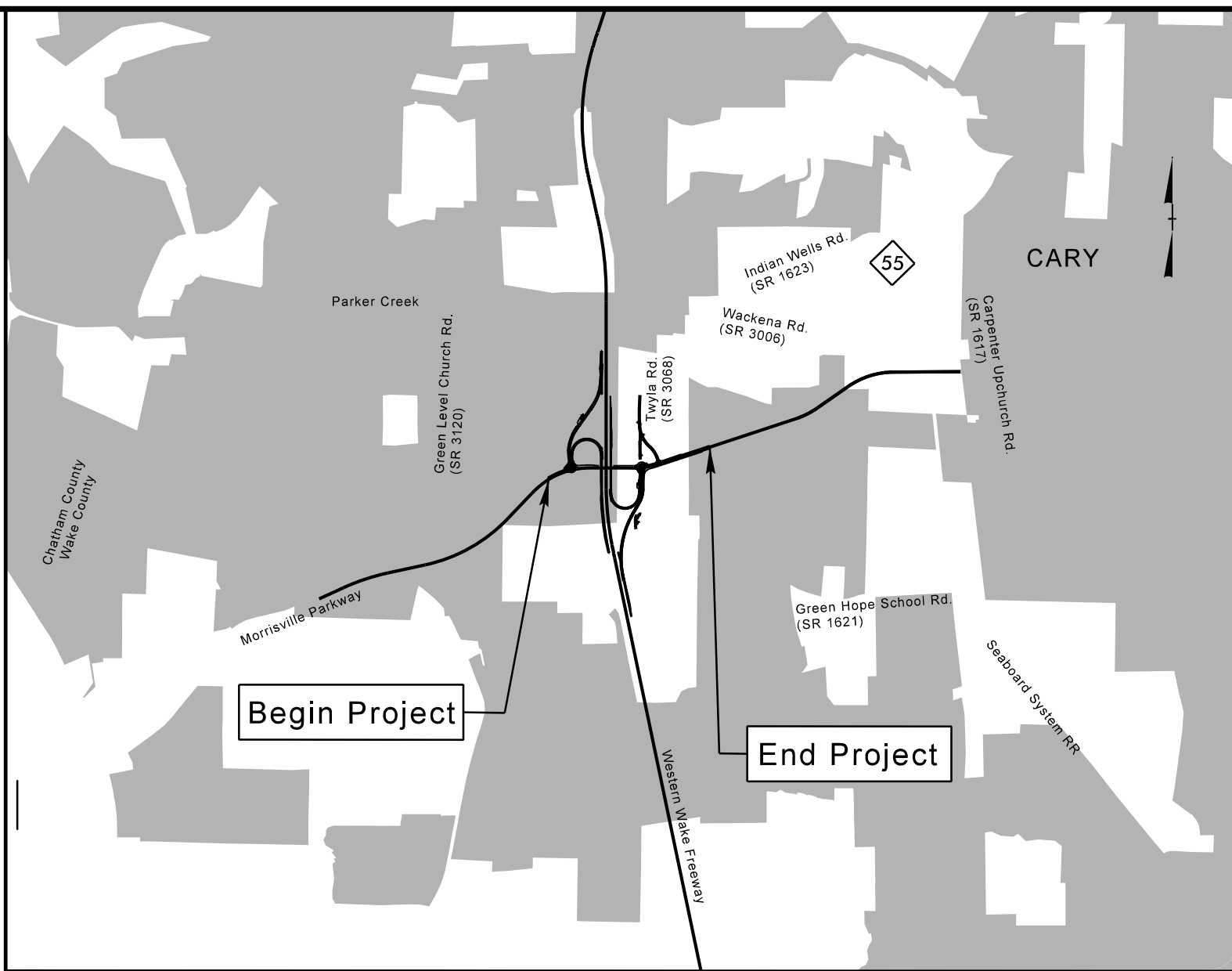


09/08/09

**TIP PROJECT: U-5315 A&B**

**TIP PROJECT: ST 1123/1220**



VICINITY MAP

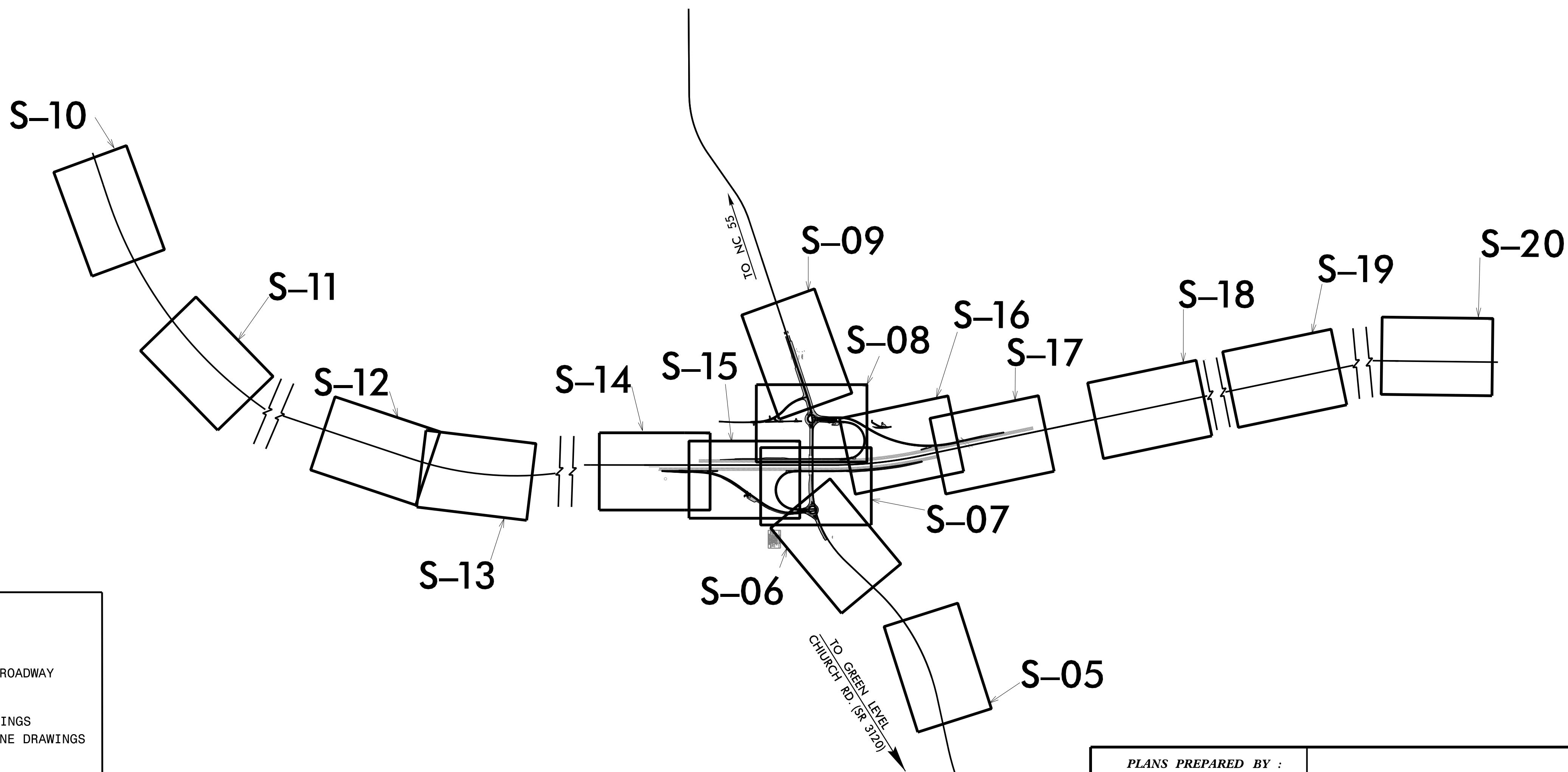
N.T.S.

STATE OF NORTH CAROLINA  
DIVISION OF HIGHWAYS

# SIGNING PLANS WAKE COUNTY

**LOCATION: MORRISVILLE PARKWAY EXTENSION AND NC 540 INTERCHANGE  
FROM SR 1625 (GREEN LEVEL CHURCH RD.) TO NC 55  
TYPE OF WORK: SIGNING**

|  |                     |
|--|---------------------|
| TIP NO.<br>U-5315 A&B  | SHEET NO.<br>SIGN-1 |
| APPROVED: _____  |                     |
| DATE: _____  |                     |
| SEAL   |                     |
|  |                     |
| <small>DocuSigned by:<br/>Barry Brandt</small>                           |                     |
| <b>DOCUMENT NOT CONSIDERED FINAL<br/>UNLESS ALL SIGNATURES COMPLETED</b> |                     |



### INDEX

| SHEET NO.         | DESCRIPTION   |
|-------------------|---|
| SIGN-1            | TITLE SHEET   |
| SIGN-2A           | NOTES AND APPLICABLE ROADWAY STANDARD DRAWINGS          |
| SIGN-2B - 2C      | SUPPORT INFORMATION                                     |
| SIGN-2D - 2H      | REVISED STANDARD DRAWINGS                               |
| SIGN-3A - 3F      | OVERHEAD STRUCTURE LINE DRAWINGS                        |
| SIGN-4A - 4I      | SIGN DESIGN SHEETS                                      |
| SIGN-4J           | TOLL ROUTE ASSEMBLIES                                   |
| SIGN-4K           | TYPE "E" SIGNS  |
| SIGN-4L           | MILE MARKER SIGNS                                       |
| SIGN-5 - SIGN-20  | SIGNING ROADWAY SHEETS                                  |
| SIGN-21           | OVERHEAD STRUCTURES - TOTAL BILL OF MATERIAL            |
| SIGN-22 - SIGN 32 | OVERHEAD STRUCTURES - AESTHETIC COLUMNS AND FOUNDATIONS |

PLANS PREPARED BY :

**RK&K**

RUMMEL, KLEPPER & KAHL, LLP  
900 RIDGEFIELD DRIVE SUITE 350  
RALEIGH, NORTH CAROLINA 27609-3960  
NC LICENSE NO. F-0112 (919) 878-9560

FOR  
THE NORTH CAROLINA  
TURNPIKE AUTHORITY

## TITLE SHEET

11/14/2017  
R:\T-r\c\Signing\CADD\Signing\_Layout\_Plans\Pages\U5315\_sgn\_1\_S-01.dgn  
NUM