

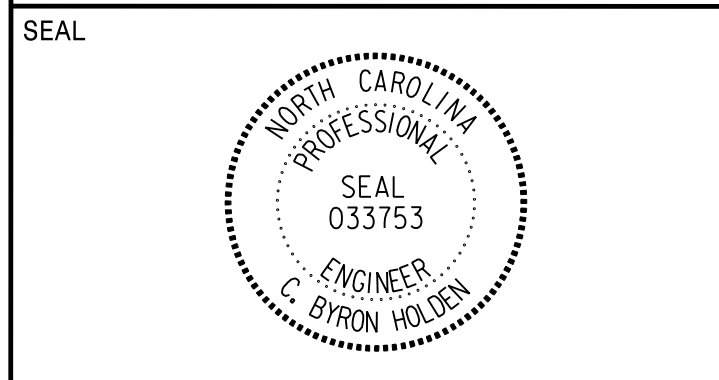
**STATE OF NORTH CAROLINA
DEPARTMENT OF TRANSPORTATION**

PROJECT REFERENCE NO. SHEET NO.

U-5315 A&B PMP-1

APPROVED: *C. Byron Holden*
11/11/2017

DATE: 11/11/2017



**DOCUMENT NOT CONSIDERED FINAL
UNLESS ALL SIGNATURES COMPLETED**

PAVEMENT MARKING PLAN
LOCATION: MORRISVILLE PARKWAY EXTENSION AND NC 540 INTERCHANGE
FROM WEST OF HIGHCROFT DRIVE TO EAST OF MILLS PARK DRIVE IN CARY
WAKE COUNTY

ROADWAY STANDARD DRAWING

THE FOLLOWING ROADWAY STANDARDS AS APPEAR IN "ROADWAY STANDARD DRAWINGS" - PROJECT SERVICES UNIT - N.C. DEPARTMENT OF TRANSPORTATION - RALEIGH, N.C., DATED JANUARY 2012 ARE APPLICABLE TO THIS PROJECT AND BY REFERENCE HEREBY ARE CONSIDERED A PART OF THESE PLANS:

STD. NO.	TITLE
1205.01	PAVEMENT MARKINGS - LINE TYPES AND OFFSETS
1205.02	PAVEMENT MARKINGS - TWO-LANE AND MULTILANE ROADWAYS
1205.03	PAVEMENT MARKINGS - EXIT AND ENTRANCE RAMP
1205.04	PAVEMENT MARKINGS - INTERSECTIONS
1205.05	PAVEMENT MARKINGS - TURN LANES
1205.06	PAVEMENT MARKINGS - LANE DROPS
1205.07	PAVEMENT MARKINGS - PEDESTRIAN CROSSWALKS
1205.08	PAVEMENT MARKINGS - SYMBOLS AND WORD MESSAGES
1205.09	PAVEMENT MARKINGS - PAINTED ISLANDS
1205.12	PAVEMENT MARKINGS - BRIDGES
1205.13	PAVEMENT MARKINGS - LANE REDUCTIONS
1250.01	RAISED PAVEMENT MARKERS - INSTALLATION SPACING
1251.01	RAISED PAVEMENT MARKERS - PERMANENT AND TEMPORARY
1253.01	RAISED PAVEMENT MARKERS - SNOWPLOWABLE
1261.01	GUARDRAIL AND BARRIER DELINEATORS - INSTALLATION SPACING
1261.02	GUARDRAIL AND BARRIER DELINEATORS - TYPES AND MOUNTING
1262.01	GUARDRAIL END DELINEATION
1264.01	OBJECT MARKERS - TYPES
1264.02	OBJECT MARKERS - INSTALLATION

GENERAL NOTES

- THE FOLLOWING GENERAL NOTES APPLY AT ALL TIMES FOR THE DURATION OF THE CONSTRUCTION PROJECT, EXCEPT WHEN OTHERWISE NOTED IN THE PLAN, OR DIRECTED BY THE ENGINEER.
- A) INSTALL PAVEMENT MARKINGS AND PAVEMENT MARKERS ON THE FINAL SURFACE AS FOLLOWS:

ROAD NAME	MARKING	MARKER
NC 540	POLYUREA, (HRE)	SNOWPLOWABLE RAISED REFLECTIVE
LOOPS AND RAMP	THERMOPLASTIC	SNOWPLOWABLE RAISED REFLECTIVE
-L- MORRISVILLE PARKWAY	THERMOPLASTIC	RAISED REFLECTIVE
-L- MORRISVILLE PARKWAY BRIDGE	POLYUREA, (HRE)	RAISED REFLECTIVE
-Y1- TWYLA ROAD	THERMOPLASTIC	RAISED REFLECTIVE
 - B) ON ASPHALT SURFACES, INSTALL HEATED-IN-PLACE THERMOPLASTIC OR EXTRUDED THERMOPLASTIC MARKINGS FOR STOP BARS, SYMBOLS, CROSSWALKS AND DIAGONAL.
 - C) TIE PROPOSED PAVEMENT MARKING LINES TO EXISTING PAVEMENT MARKING LINES.
 - D) REMOVE/REPLACE ANY CONFLICTING/DAMAGED PAVEMENT MARKINGS AND MARKERS.
 - E) PASSING ZONES WILL BE DETERMINED IN THE FIELD AND MUST BE APPROVED BY THE ENGINEER.
 - F) STOP BAR LOCATION AT NON-SIGNALIZED INTERSECTIONS MAY BE ADJUSTED AS DIRECTED BY THE ENGINEER.
 - G) REMOVE ALL RESIDUE AND SURFACE LAITANCE BY ACCEPTABLE METHODS ON CONCRETE BRIDGE DECKS PRIOR TO PLACING COLD APPLIED TYPE II PAVEMENT MARKING MATERIAL.
 - H) UNLESS OTHERWISE SPECIFIED, HEATED-IN-PLACE THERMOPLASTIC MAY BE USED IN LIEU OF EXTRUDED THERMOPLASTIC FOR STOP BARS, SYMBOLS, CHARACTERS AND DIAGONALS. IF HEATED-IN-PLACE IS USED, IT SHALL BE PAID FOR USING THE EXTRUDED THERMOPLASTIC PAY ITEM.
 - I) SEE ROADWAY PLANS FOR ALTERNATE CURB RAMP DESIGNS WHEN INDICATED ON PAVEMENT MARKING DETAIL SHEETS.

FINAL PAVEMENT MARKING SCHEDULE

T2	WHITE STOP BAR (24", 120 MIL)	
T3	WHITE CROSSWALK LINE (24", 120 MIL)	
T6	WHITE EDGELINE (6", 90 MIL)	
T7	YELLOW EDGELINE (6", 90 MIL)	
T8	2 FT. - 6 FT./SP WHITE MINISKIP (4", 120 MIL)	
T17	3 FT. - 3 FT./SP WHITE MINISKIP (8", 120 MIL)	
TA	WHITE EDGELINE (4", 90 MIL)	
TB	YELLOW EDGELINE (4", 90 MIL)	
TD	3 FT. - 9 FT./SP WHITE MINISKIP (4", 120 MIL)	
TE	WHITE SOLID LANE LINE (4", 120 MIL)	
TI	YELLOW DOUBLE CENTER (4", 120 MIL)	
TK	3 FT. - 9 FT./SP WHITE MINISKIP (6", 120 MIL)	
TL	WHITE SOLID LANE LINE (6", 120 MIL)	
TN	WHITE GORELINE (8", 90 MIL)	
TP	YELLOW DIAGONAL (8", 90 MIL)	
TR	WHITE SOLID LANE LINE (8", 120 MIL)	
TS	WHITE GORELINE (12", 90MIL)	
TT	WHITE SOLID LANE LINE (12", 120 MIL)	
UA	LEFT TURN ARROW (90 MIL)	
UB	RIGHT TURN ARROW (90 MIL)	
UC	STRAIGHT ARROW (90 MIL)	
UD	COMBO. LEFT/STRAIGHT ARROW (90 MIL)	
UN	24" YIELD LINE TRIANGLE (90 MIL)	
UP	MERGE ARROW (90 MIL)	
UU	FISH-HOOK STRAIGHT ARROW (90 MIL)	
UZ	FISH-HOOK W/CIRCLE STRAIGHT ARROW (90 MIL)	
YA	FISH-HOOK W/CIRCLE LEFT ARROW (90 MIL)	
V5	POLYUREA (HRE) 10 FT. BLACK SKIP (6")	
V6	WHITE EDGELINE (6")	
V7	YELLOW EDGELINE (6")	
VA	WHITE EDGELINE (4")	
VI	YELLOW DOUBLE CENTER (4")	
VJ	10 FT. WHITE SKIP (6")	
VK	3 FT. - 9 FT./SP WHITE MINISKIP (6")	
VS	WHITE GORELINE (12")	
VT	WHITE SOLID LANE LINE (12")	
MA	PERMANENT RAISED MARKER	YELLOW & YELLOW
MB	PERMANENT RAISED MARKER	CRYSTAL & RED
MC	PERMANENT RAISED MARKER	YELLOW & RED
MF	SNOWPLOWABLE MARKER	CRYSTAL & RED

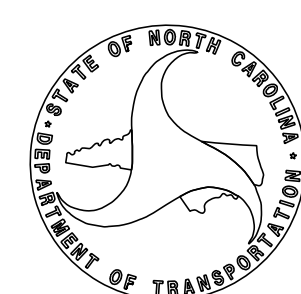
INDEX

SHEET NO.	DESCRIPTION
PMP-1	PAVEMENT MARKING PLAN INDEX OF SHEETS, ROADWAY STANDARD DRAWINGS, GENERAL NOTES AND FINAL PAVEMENT MARKING SCHEDULE
PMP-1A	1205D08, SHEET 3 OF 8 PAVEMENT MARKINGS - SYMBOLS AND WORD MESSAGES
PMP-2-8	PAVEMENT MARKING DETAIL

PLAN REVIEWED BY: N.C.D.O.T. SIGNING AND DELINEATION UNIT

A. ALQUDWAH, PE SIGNING & DELINEATION REGIONAL ENGINEER

M. EATON, PE SIGNING & DELINEATION DESIGN ENGINEER



PLAN PREPARED BY: RK&K

C. B. HOLDEN, PE PROJECT MANAGER

K. W. BISBY, PE SENIOR PROJECT ENGINEER

M. A. COLE SENIOR DESIGNER



RUMMEL, KLEPPER & KAHL, LLP
900 RIDGEFIELD DRIVE, SUITE 350
RALEIGH, NORTH CAROLINA 27609
NC LICENSE NO. F-0112
1-888-521-4455 OR 919-878-9560

T.I.P.: U-5315 A&B