

PROJ. REFERENCE NO.	SHEET NO.
U-5315 A & B	TMP-2

MANAGEMENT STRATEGIES

PHASE I

- CONSTRUCT PROPOSED NC 540 LOOPS AND RAMPS.
- MAINTAINING EXISTING TRAFFIC, CONSTRUCT -L-.
- MAINTAINING EXISTING TRAFFIC, CONSTRUCT -Y1- AND -DR2-.

PHASE II

- ALTERNATING LANE CLOSURES, TIE IN -Y1- AND -DR2-, PLACE PAVEMENT MARKINGS, AND OPEN TO TRAFFIC. PERMANENTLY CLOSE TWYLA RD SOUTH OF MORRISVILLE PKWY AND CONSTRUCT CUL-DE-SAC.
- SHIFT THE NORTHBOUND LANES OF NC 540 TO THE MEDIAN SHOULDER IN 3 - 11' LANES. PLACE PORTABLE CONCRETE BARRIER ALONG THE OUTSIDE TRAVEL LANE AND CONSTRUCT NORTHBOUND NC 540 WIDENING.
- SHIFT THE SOUTHBOUND LANES OF NC 540 TO THE MEDIAN SHOULDER IN 3 - 11' LANES. RESET THE PORTABLE CONCRETE BARRIER FROM NORTHBOUND NC 540 ALONG THE OUTSIDE TRAVEL LANE AND CONSTRUCT SOUTHBOUND NC 540 WIDENING.
- REMOVE THE PORTABLE CONCRETE FROM NC 540 AND CONSTRUCT THE REMAINING SECTIONS OF THE NC 540 LOOPS AND RAMPS.

PHASE III

- REMOVE PAVEMENT PER THE ROADWAY PLAN.
- PLACE FINAL LAYER OF SURFACE COURSE, FINAL PAVEMENT MARKINGS, AND OPEN ALL ROADS TO TRAFFIC IN THE FINAL PATTERN.

TRAFFIC CONTROL PHASING

PHASE I

STEP 1:

ERECT ADVANCE WORK ZONE WARNING SIGNS IN ACCORDANCE WITH RDWY STD 1101.01 ON -L- MORRISVILLE PARKWAY, NC 540 AND -Y1- TWYLA RD.

STEP 2:

AWAY FROM TRAFFIC **BEGIN** CONSTRUCTION EXCLUDING THE FINAL LAYER OF SURFACE COURSE AS FOLLOWS: (SEE TMP-3 THROUGH TMP-9)

- -L- STA 56+95 TO STA 66+26
- -L- STA 68+77 TO STA 72+00
- -L- STA 75+28 TO STA 85+00 INCLUDING TEMPORARY PAVEMENT IN THE MEDIAN FROM -L- STA 76+70 TO STA 77+35
- -RPD- STA 14+47 TO STA 22+00
- -LPD- STA 12+25 TO STA 16+00
- -LPB- STA 12+20 TO STA 22+06
- -RPB- STA 14+64 TO STA 30+37

STEP 3:

USING RDWY STD 1101.02 CONSTRUCT EXCLUDING THE FINAL LAYER OF SURFACE COURSE AS FOLLOWS: (SEE TMP-4 AND TMP-9)

- -Y1- STA 10+00 TO STA 18+86
- -DR2- STA 10+00 TO STA 11+00

TRAFFIC CONTROL PHASING, CONTINUED

COMPLETE PHASE II STEPS 6 AND 7 IN 120 CALENDAR DAYS

STEP 6:

UPON COMPLETION OF STEP 3 AND USING RDWY STD 1101.02 CLOSE THE MEDIAN AND MIDDLE TRAVEL LANES OF SB NC 540 AND REMOVE THE EXISTING PAVEMENT MARKINGS AND REPLACE WITH TEMPORARY MARKINGS AND MARKERS IN 11' TRAVEL LANES. SHIFT SB 540 INTO ITS TEMPORARY PATTERN TO THE MEDIAN AND MIDDLE TRAVEL LANES. CLOSE THE MIDDLE AND OUTSIDE TRAVEL LANES OF SB NC 540 AND PLACE PORTABLE CONCRETE BARRIER AS SHOWN, (SEE TMP-16 THRU TMP-20).

BEHIND BARRIER CONSTRUCT EXCLUDING THE FINAL LAYER OF SURFACE COURSE AS FOLLOWS, (SEE TMP-16 THRU TMP-20):

- SB -NC540- STA 557+49 TO STA 576+18
- -LPB- STA 10+00 TO STA 12+20
- SB -NC540- STA 585+59 TO STA 593+31
- -RPB- STA 10+00 TO STA 14+64

STEP 7:

USING RDWY STD 1101.02 CLOSE THE MIDDLE AND OUTSIDE TRAVEL LANES OF SB NC 540 AND REMOVE THE PORTABLE CONCRETE BARRIER FROM SB NC 540. REMOVE THE TEMPORARY PAVEMENT MARKINGS AND MARKERS AND REPLACE WITH FINAL MARKINGS AND MARKERS IN ITS PROPOSED TRAFFIC PATTERN. REMOVE THE REMAINING TEMPORARY PAVEMENT MARKINGS FROM THE MEDIAN LANE AND MEDIAN SHOULDER. PLACE THE REMAINING FINAL MARKINGS ON SB NC 540 AND OPEN THE SB NC 540 TRAVEL LANES. THE NEWLY CONSTRUCTED AUXILIARY LANES SHALL REMAIN CLOSED AND DELINEATED WITH DRUMS (SEE TMP-16 THROUGH TMP-20).

STEP 8:

COMPLETE ALL REMAINING CONSTRUCTION AS BEGUN IN PHASE I.

PHASE III

STEP 1:

USING RDWY STD 1101.02 AS NEEDED, REMOVE EXISTING AND TEMPORARY PAVEMENT. CONSTRUCT REMAINING MEDIAN CURB AND GUTTER ON -L- MORRISVILLE PKWY.

STEP 2:

USING LANE CLOSURES AND FLAGGERS AS NEEDED, PLACE THE FINAL LAYER OF SURFACE COURSE AND FINAL PAVEMENT MARKINGS ON -L- MORRISVILLE PARKWAY. REMOVE ALL TRAFFIC CONTROL DEVICES AND OPEN ALL LANES TO TRAFFIC IN THE FINAL PATTERN, (SEE TMP-21 THRU TMP-26).

PHASE II

STEP 1:

USING RDWY STD 1101.02 CLOSE THE MEDIAN AND MIDDLE LANES OF NB NC 540 AND FILL THE EXISTING RUMBLE STRIPS AS DIRECTED BY THE ENGINEER.

COMPLETE PHASE II STEPS 2 AND 3 IN 120 CALENDAR DAYS

STEP 2:

USING RDWY STD 1101.02 CLOSE THE MEDIAN AND MIDDLE TRAVEL LANES OF NB NC 540 AND REMOVE THE EXISTING PAVEMENT MARKINGS AND REPLACE WITH TEMPORARY MARKINGS AND MARKERS IN 11' TRAVEL LANES. SHIFT NB 540 INTO ITS TEMPORARY PATTERN TO THE MEDIAN AND MIDDLE TRAVEL LANES. CLOSE THE MIDDLE AND OUTSIDE TRAVEL LANES OF NB NC 540 AND PLACE PORTABLE CONCRETE BARRIER AS SHOWN, (SEE TMP-10 AND TMP-12 THRU TMP-14).

BEHIND BARRIER CONSTRUCT EXCLUDING THE FINAL LAYER OF SURFACE COURSE AS FOLLOWS, (SEE TMP-10 AND TMP-12 THRU TMP-14):

- NB -NC540- STA 545+66 TO STA 557+36
- -RPD- STA 10+00 TO STA 14+47
- NB -NC540- STA 566+52 TO STA 585+29
- -LPD- STA 10+00 TO STA 12+25

STEP 3:

USING RDWY STD 1101.02 CLOSE THE MIDDLE AND OUTSIDE TRAVEL LANES OF NB NC 540 AND REMOVE THE PORTABLE CONCRETE BARRIER FROM NB NC 540. REMOVE THE TEMPORARY PAVEMENT MARKINGS AND MARKERS AND REPLACE WITH FINAL MARKINGS AND MARKERS IN ITS PROPOSED TRAFFIC PATTERN. REMOVE THE REMAINING TEMPORARY PAVEMENT MARKINGS FROM THE MEDIAN LANE AND MEDIAN SHOULDER. PLACE THE REMAINING FINAL MARKINGS ON NB NC 540 AND OPEN THE NB NC 540 TRAVEL LANES. THE NEWLY CONSTRUCTED AUXILIARY LANES SHALL REMAIN CLOSED AND DELINEATED WITH DRUMS, (SEE TMP-16 THROUGH TMP-19, AND PAVEMENT MARKING PLANS).

STEP 4:

USING ALTERNATING LANE CLOSURES TIE IN -Y1- AND -DR2-, PLACE PAVEMENT MARKINGS, AND OPEN THE ROADWAYS TO TRAFFIC. UPON COMPLETION, CLOSE EXISTING TWYLA RD. AND CONSTRUCT THE PROPOSED "T" TURN-AROUND, CUL-DE-SAC, AND -DR1- ON TWYLA RD. (SEE TMP-11, TMP-13 AND TMP-15).

STEP 5:

CONSTRUCT EXCLUDING THE FINAL LAYER OF SURFACE COURSE AS FOLLOWS (SEE TMP-11 AND TMP-13):

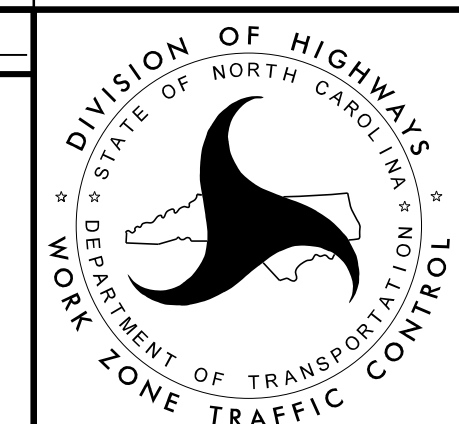
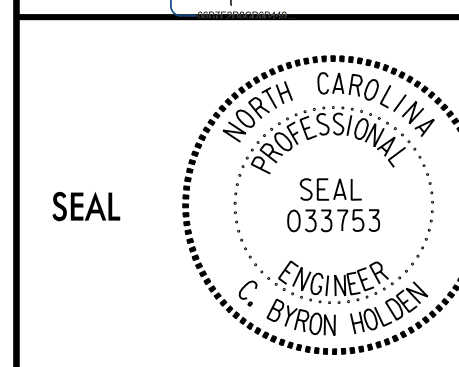
- -RPD- STA 22+00 TO STA 31+02
- -LPD- STA 16+00 TO STA 23+54
- -L- STA 72+00 TO STA 75+28

STEP 6A:

USING RDWY STD 1101.02 CLOSE THE MEDIAN AND MIDDLE LANES OF SB NC 540 AND FILL THE EXISTING RUMBLE STRIPS AS DIRECTED BY THE ENGINEER.

DOCUMENT NOT CONSIDERED FINAL
UNLESS ALL SIGNATURES COMPLETED

APPROVED: [Signature] DATE: 12/8/2017



TRAFFIC
CONTROL
PHASING