

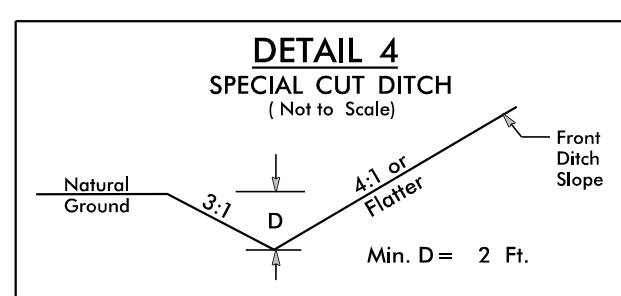
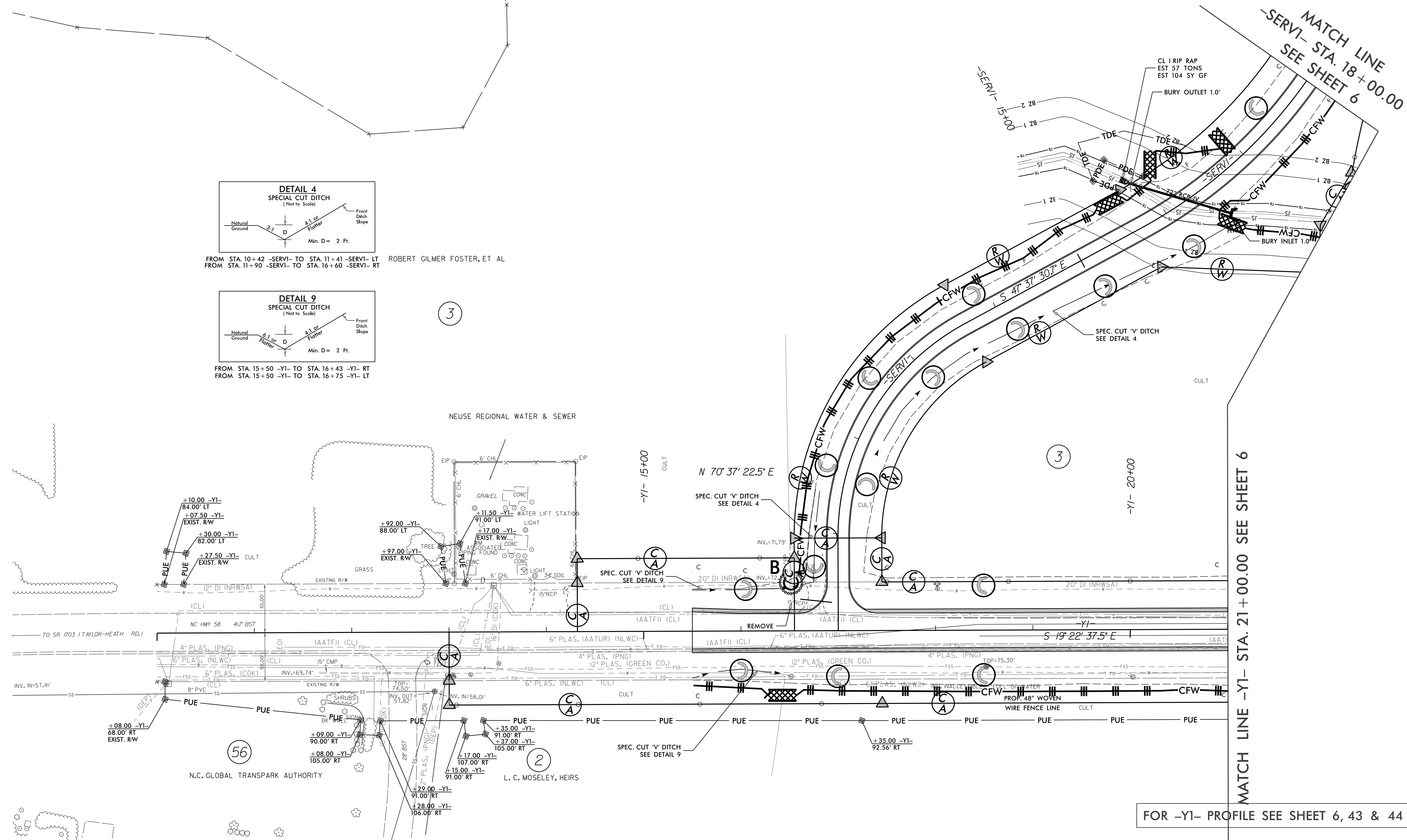
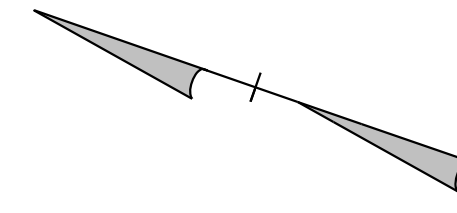
**This electronic collection of documents is provided
for the convenience of the user
and is Not a Certified Document –**

**The documents contained herein were originally issued
and sealed by the individuals whose names and license
numbers appear on each page, on the dates appearing
with their signature on that page.**

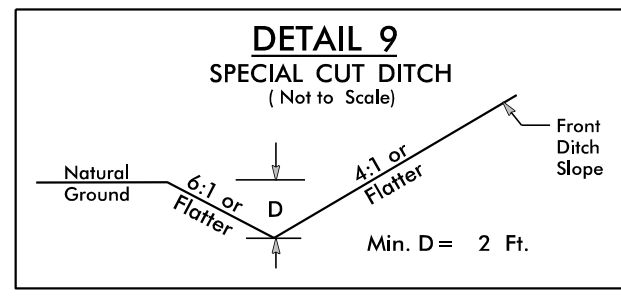
**This file or an individual page
shall not be considered a certified document.**

CLEARING AND GRUBBING
EROSION CONTROL FOR
CONSTRUCTION SHEET 26

PROJECT REFERENCE NO. R-5703	SHEET NO. EC-53/CONST.26
RW SHEET NO.	
ROADWAY DESIGN ENGINEER	HYDRAULICS ENGINEER



FROM STA. 10+42 -SERV1- TO STA. 11+41 -SERV1- LT
FROM STA. 11+90 -SERV1- TO STA. 16+60 -SERV1- RT
ROBERT GILMER FOSTER, ET AL



FROM STA. 15+50 -Y1- TO STA. 16+43 -Y1- RT
FROM STA. 15+50 -Y1- TO STA. 16+75 -Y1- LT

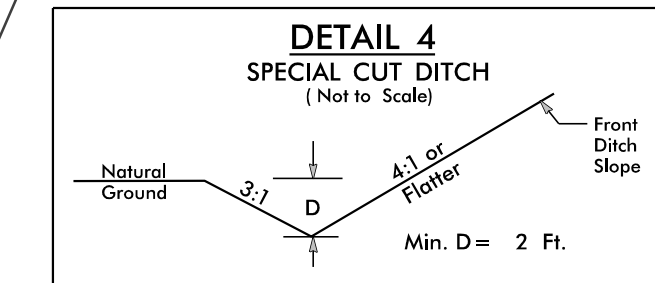
REVISIONS

MATCH LINE -Y1- STA. 21+00.00 SEE SHEET 6

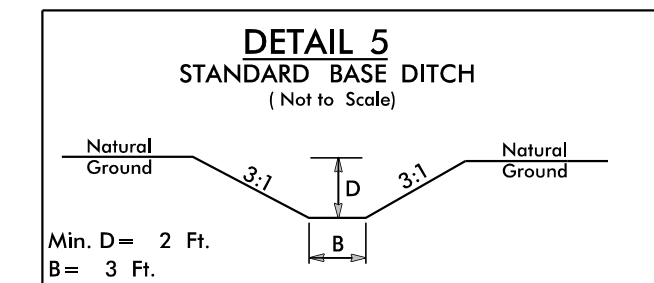
FOR -Y1- PROFILE SEE SHEET 6, 43 & 44

PROJECT REFERENCE NO. <i>R-5703</i>	SHEET NO. <i>EC-54/CONST.27</i>
RW SHEET NO.	
ROADWAY DESIGN ENGINEER	HYDRAULICS ENGINEER

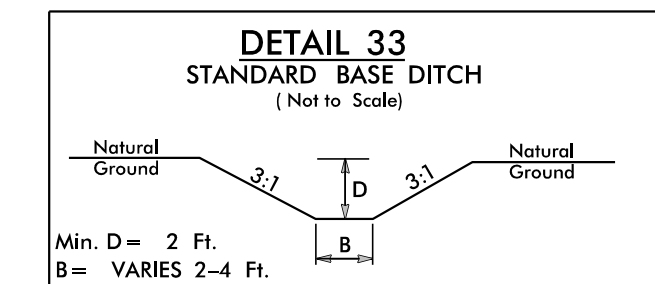
FINAL GRADING
EROSION CONTROL FOR
CONSTRUCTION SHEET 27



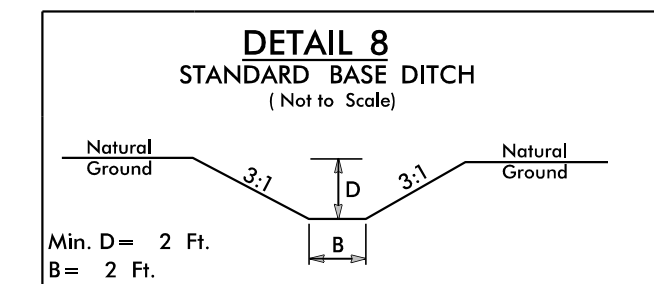
FROM STA. 44+90 -Y1- TO STA. 45+69 -Y1- RT
FROM STA. 44+90 -Y1- TO STA. 45+50 -Y1- LT
FROM STA. 37+71 -Y1- TO STA. 38+71 -Y1- RT



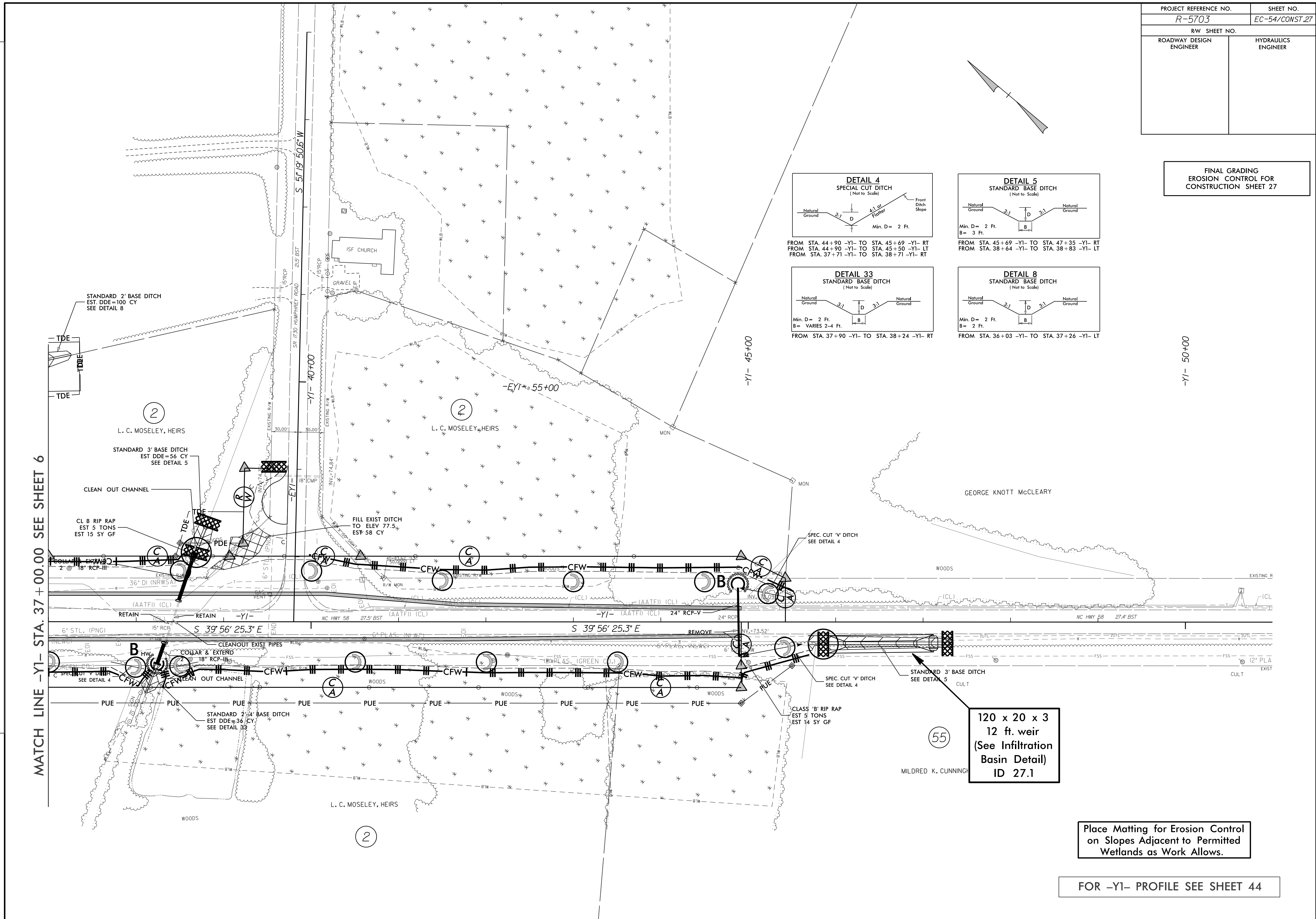
FROM STA. 45+69 -Y1- TO STA. 47+35 -Y1- RT
FROM STA. 38+64 -Y1- TO STA. 38+83 -Y1- LT



FROM STA. 37+90 -Y1- TO STA. 38+24 -Y1- RT



FROM STA. 36+03 -Y1- TO STA. 37+26 -Y1- LT



MATCH LINE -Y1- STA. 37+00.00 SEE SHEET 6

REVISIONS

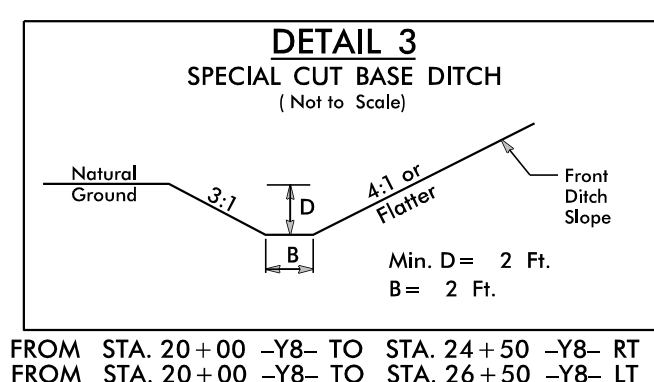
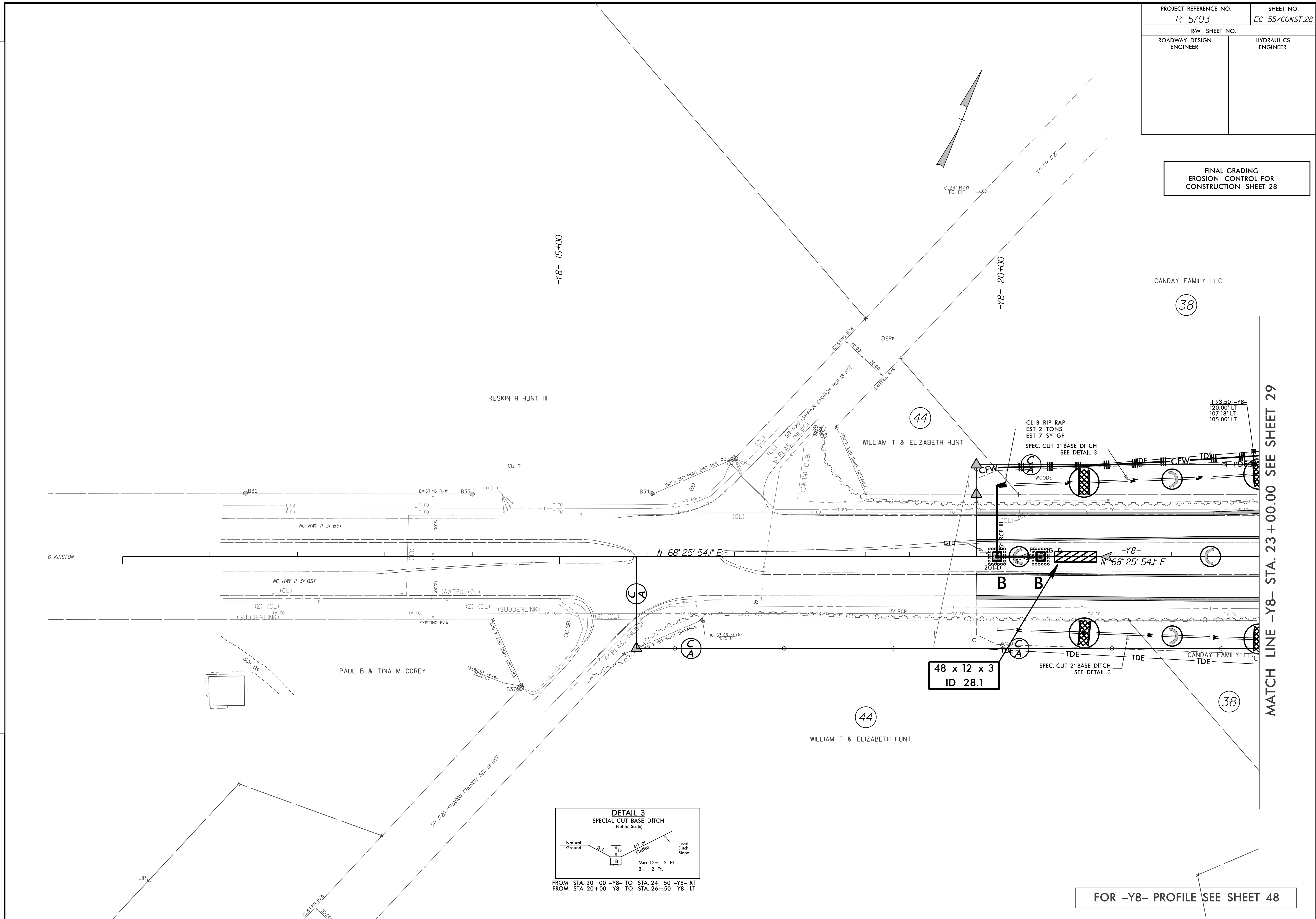
Place Matting for Erosion Control
on Slopes Adjacent to Permitted
Wetlands as Work Allows.

FOR -Y1- PROFILE SEE SHEET 44

PROJECT REFERENCE NO. <i>R-5703</i>	SHEET NO. <i>EC-55/CONST.28</i>
RW SHEET NO.	
ROADWAY DESIGN ENGINEER	HYDRAULICS ENGINEER

FINAL GRADING
EROSION CONTROL FOR
CONSTRUCTION SHEET 28

REVISIONS

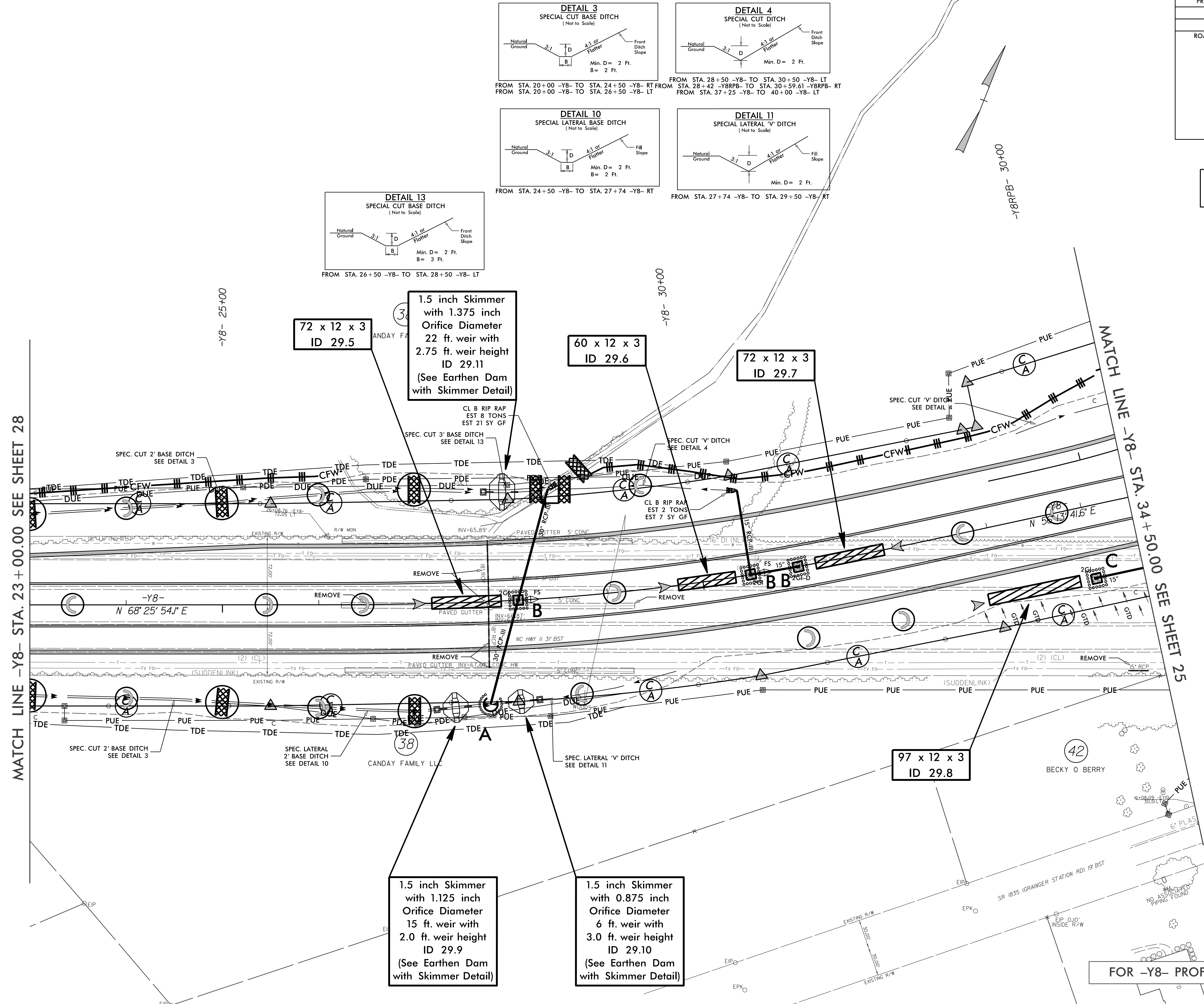
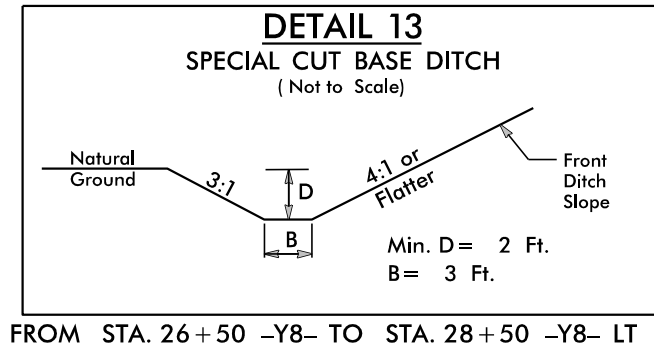
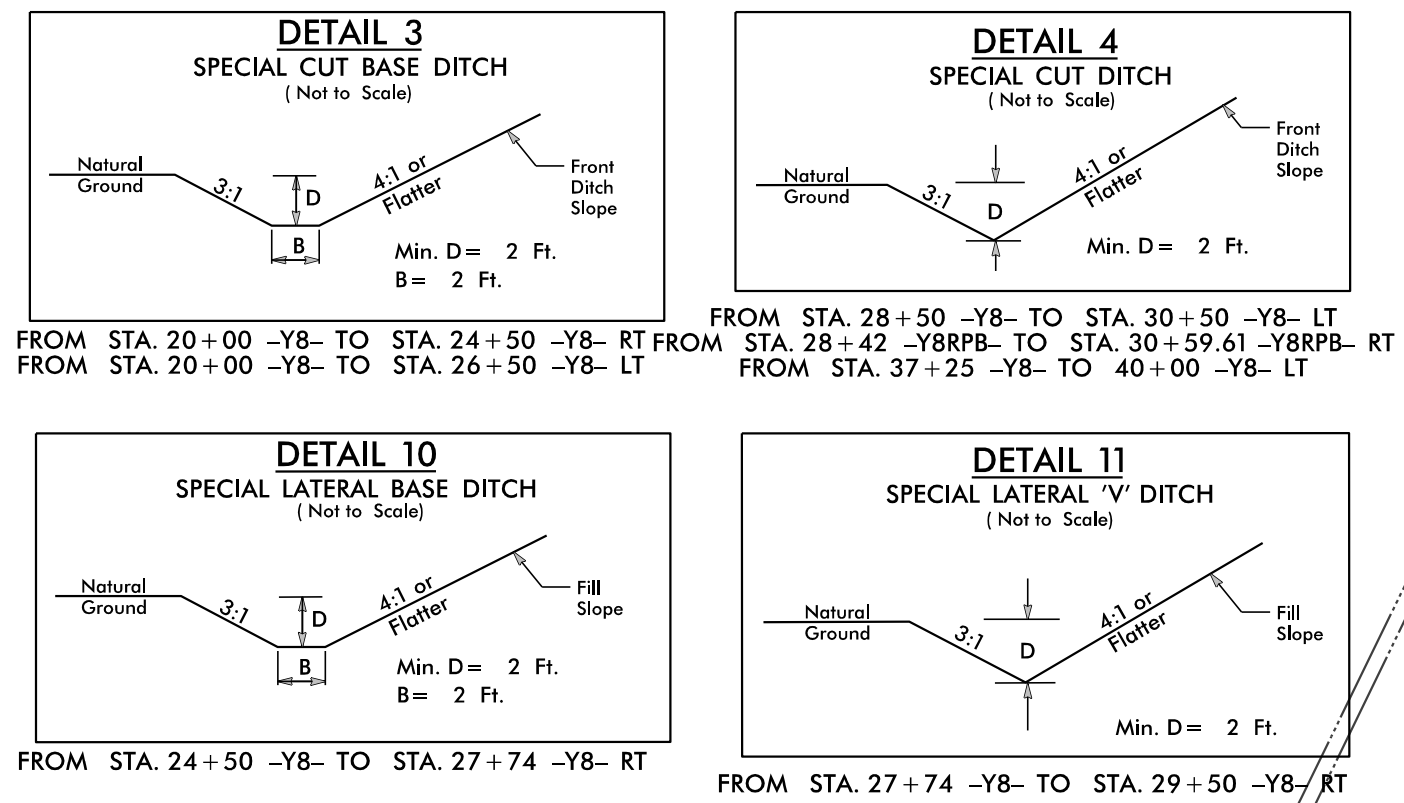


FROM STA. 20+00 -Y8- TO STA. 24+50 -Y8- RT
FROM STA. 20+00 -Y8- TO STA. 26+50 -Y8- LT

FOR -Y8- PROFILE SEE SHEET 48

PROJECT REFERENCE NO.	SHEET NO.
R-5703	EC-56/CONST.29
RW SHEET NO.	
ROADWAY DESIGN ENGINEER	HYDRAULICS ENGINEER

FINAL GRADING
EROSION CONTROL FOR
CONSTRUCTION SHEET 29



72 x 12 x 3
ID 29.5

1.5 inch Skimmer
with 1.375 inch
Orifice Diameter
22 ft. weir with
2.75 ft. weir height
ID 29.11
(See Earthen Dam
with Skimmer Detail)

60 x 12 x 3
ID 29.6

72 x 12 x 3
ID 29.7

97 x 12 x 3
ID 29.8

1.5 inch Skimmer
with 1.125 inch
Orifice Diameter
15 ft. weir with
2.0 ft. weir height
ID 29.9
(See Earthen Dam
with Skimmer Detail)

1.5 inch Skimmer
with 0.875 inch
Orifice Diameter
6 ft. weir with
3.0 ft. weir height
ID 29.10
(See Earthen Dam
with Skimmer Detail)

FOR -Y8- PROFILE SEE SHEET 48

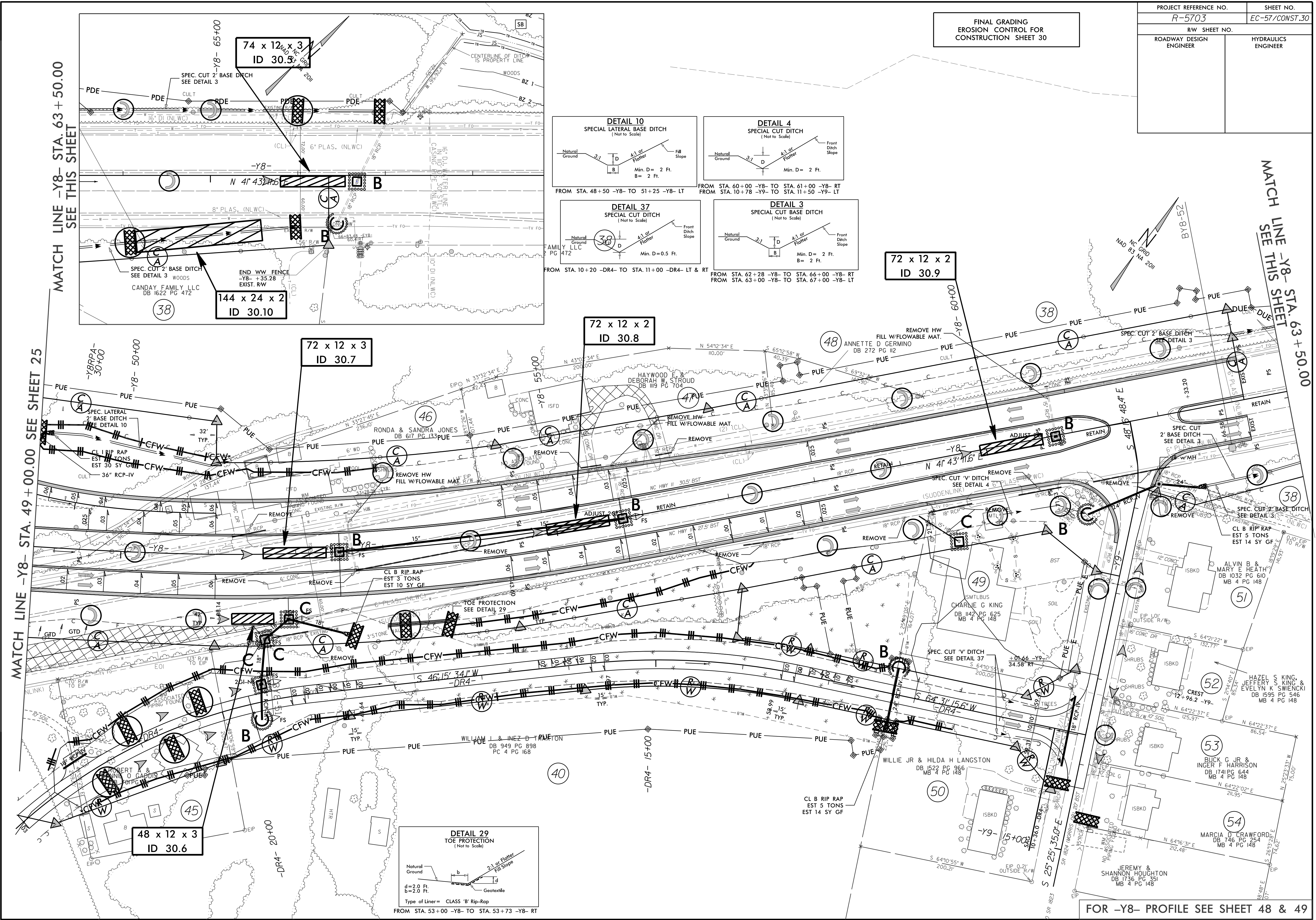
REVISIONS

MATCH LINE -Y8- STA. 23+00.00 SEE SHEET 28

MATCH LINE -Y8- STA. 34+50.00 SEE SHEET 25

PROJECT REFERENCE NO.	SHEET NO.
R-5703	EC-57/CONST.30
RW SHEET NO.	
ROADWAY DESIGN ENGINEER	HYDRAULICS ENGINEER

FINAL GRADING
EROSION CONTROL FOR
CONSTRUCTION SHEET 30



MATCH LINE -Y8- STA. 63 + 50.00
SEE THIS SHEET

MATCH LINE -Y8- STA. 63 + 50.00
SEE THIS SHEET

MATCH LINE -Y8- STA. 49 + 00.00
SEE SHEET 25

FOR -Y8- PROFILE SEE SHEET 48 & 49

74 x 12 x 3
ID 30.3

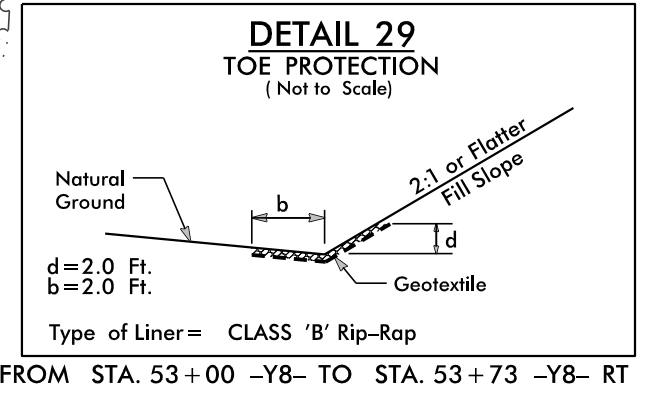
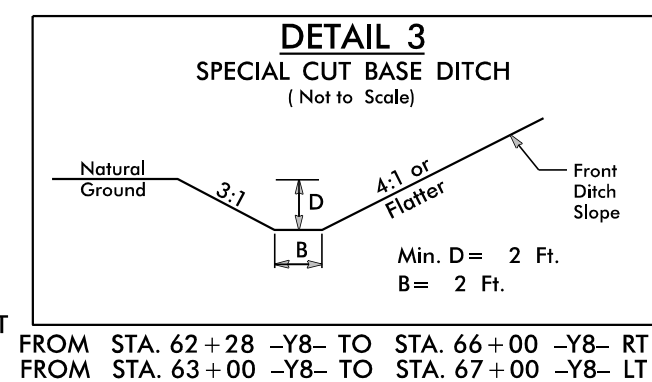
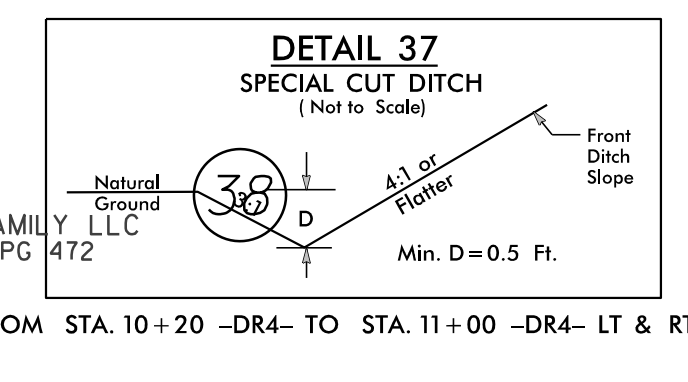
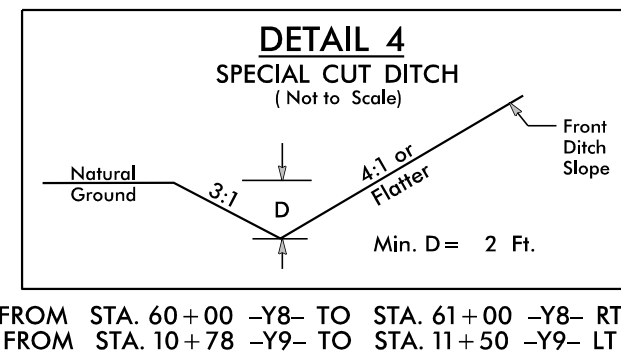
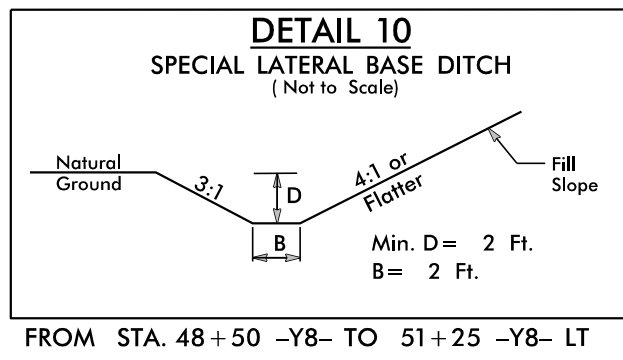
144 x 24 x 2
ID 30.10

72 x 12 x 3
ID 30.7

72 x 12 x 2
ID 30.8

72 x 12 x 2
ID 30.9

48 x 12 x 3
ID 30.6



REVISIONS