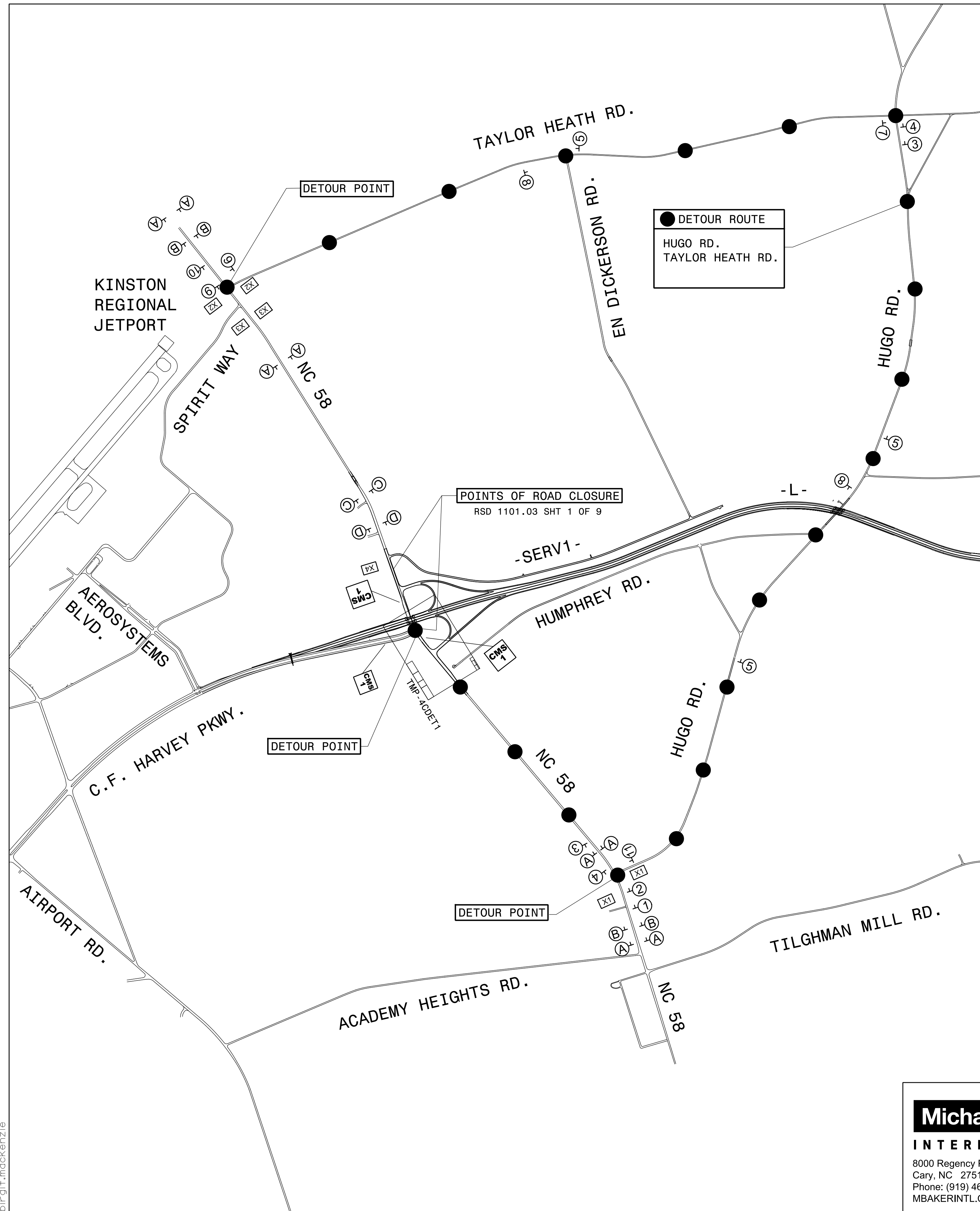


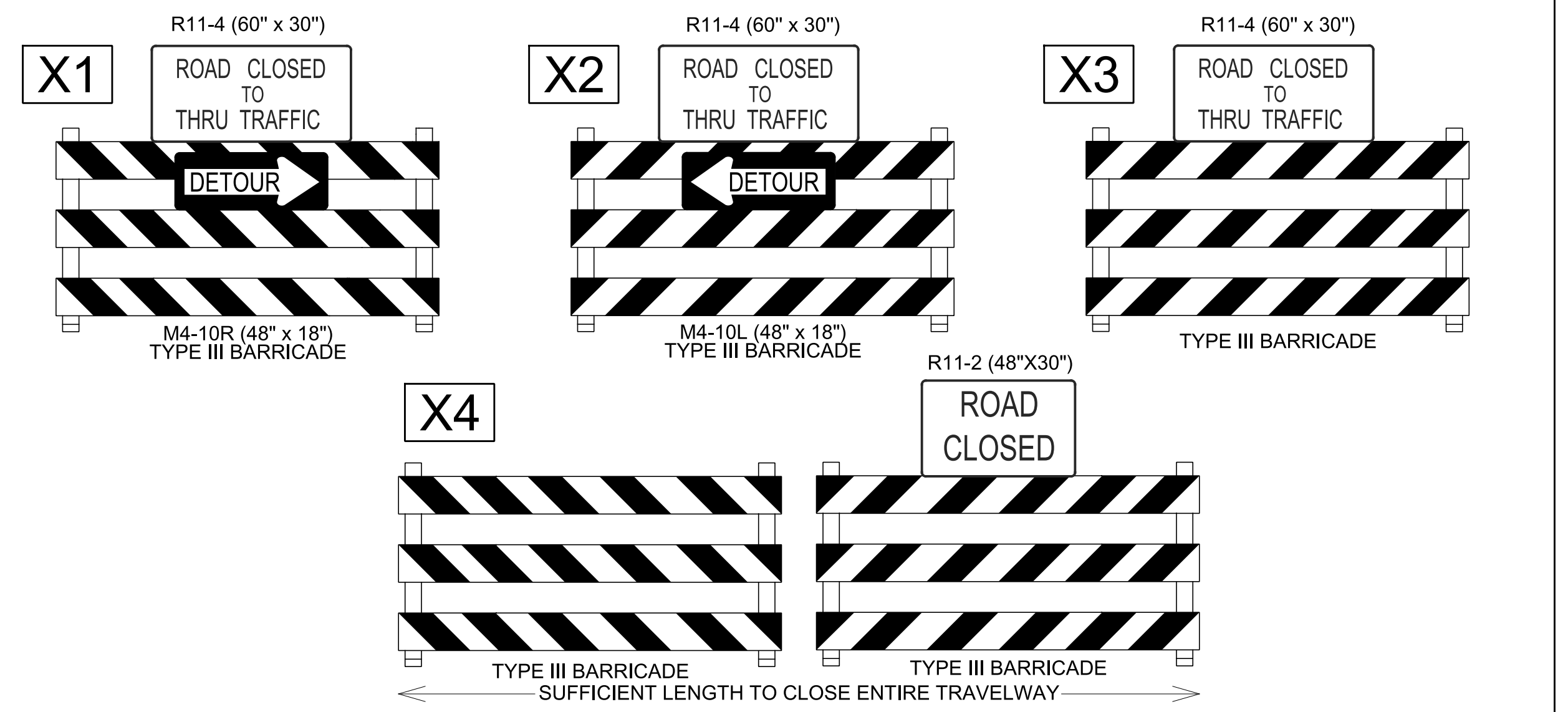
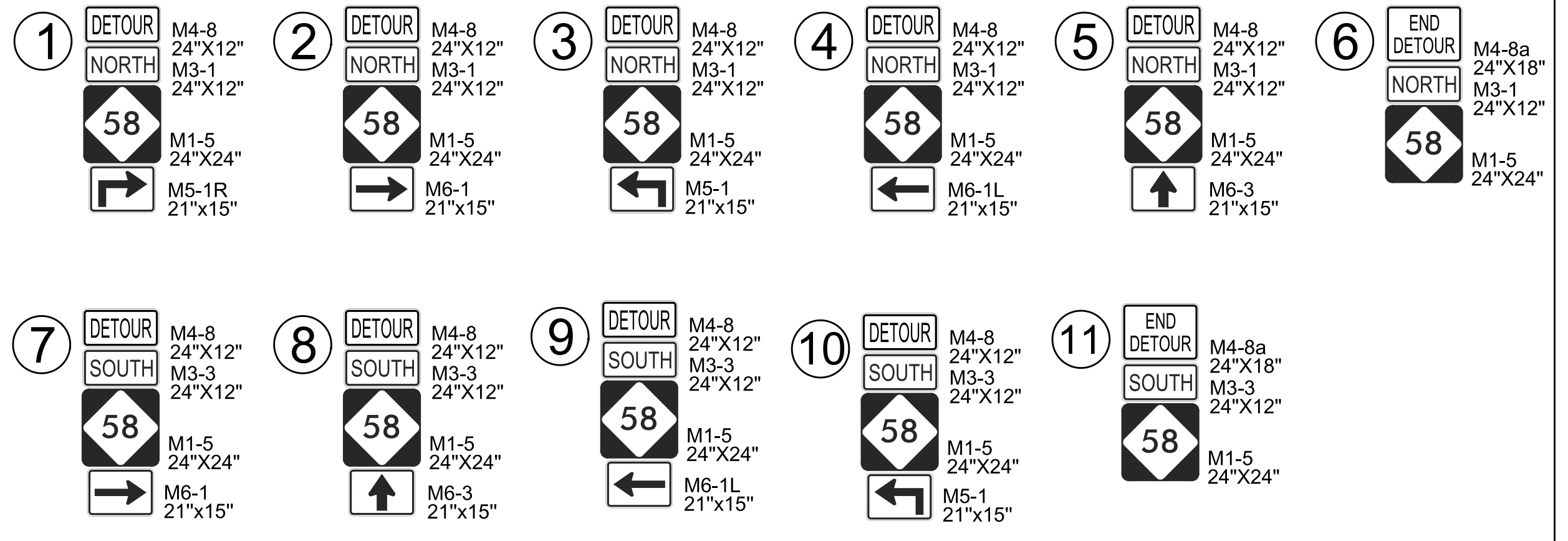
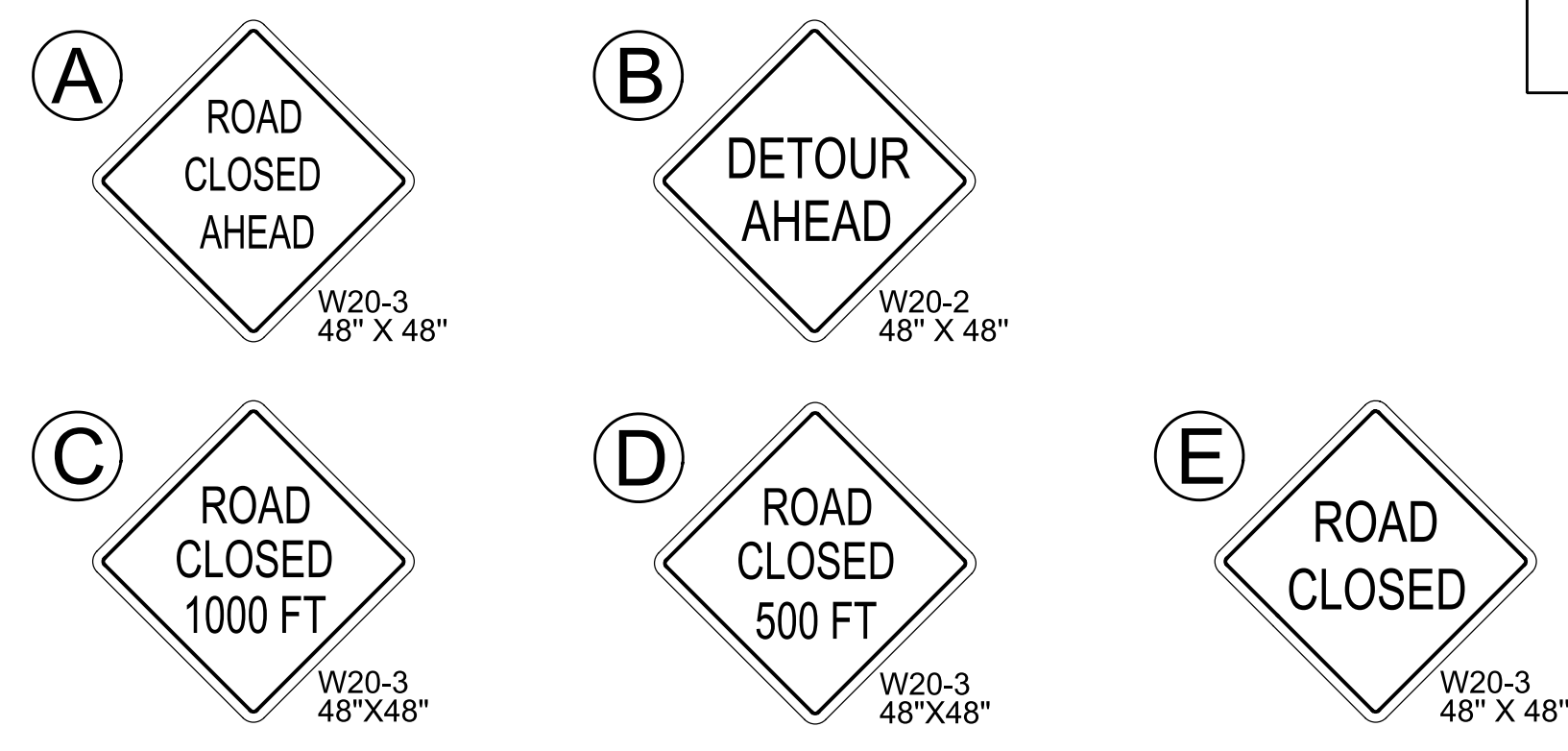
9/14/2017  
 R:\Traffic\TrafficControl\TMP\PLAN SHEETS\NR-5703 TMP 04CDET DETOUR ROUTE NC 58 GIRDER.dgn  
 bir-git.mackenzie



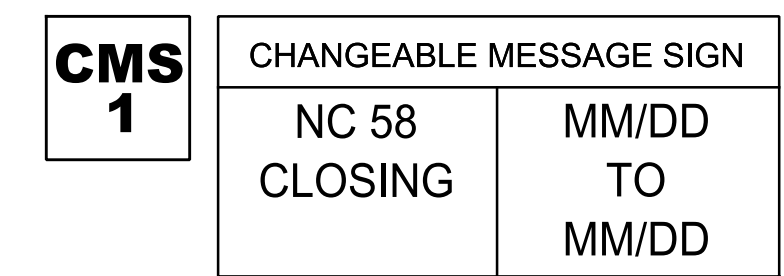
● DETOUR ROUTE  
 HUGO RD.  
 TAYLOR HEATH RD.

POINTS OF ROAD CLOSURE  
 RSD 1101.03 SHT 1 OF 9

**SIGN LEGEND**



**CMS MESSAGES PRIOR TO ROAD CLOSURE**



DETOUR ALLOWED ONLY FOR OVERHEAD BRIDGE GIRDER ERECTION. REFER TO PROJECT SPECIAL PROVISIONS - INTERMEDIATE CONTRACT TIMES.

**Michael Baker INTERNATIONAL**  
 8000 Regency Parkway, Suite 600,  
 Cary, NC 27518  
 Phone: (919) 463-5488  
 M.BAKERINTL.COM

DOCUMENT NOT CONSIDERED FINAL UNLESS ALL SIGNATURES COMPLETED

SEAL  
 SEAL 042065  
 9/15/2017

DIVISION OF HIGHWAYS  
 STATE OF NORTH CAROLINA  
 DEPARTMENT OF TRANSPORTATION  
 WORK ZONE TRAFFIC CONTROL

**NC 58 -Y1-  
 ROAD CLOSURE  
 AND DETOUR  
 FOR GIRDER INSTALLATION**