

**This electronic collection of documents is provided
for the convenience of the user
and is Not a Certified Document –**

**The documents contained herein were originally issued
and sealed by the individuals whose names and license
numbers appear on each page, on the dates appearing
with their signature on that page.**

**This file or an individual page
shall not be considered a certified document.**

09_08/99

TIP PROJECT: U-5806

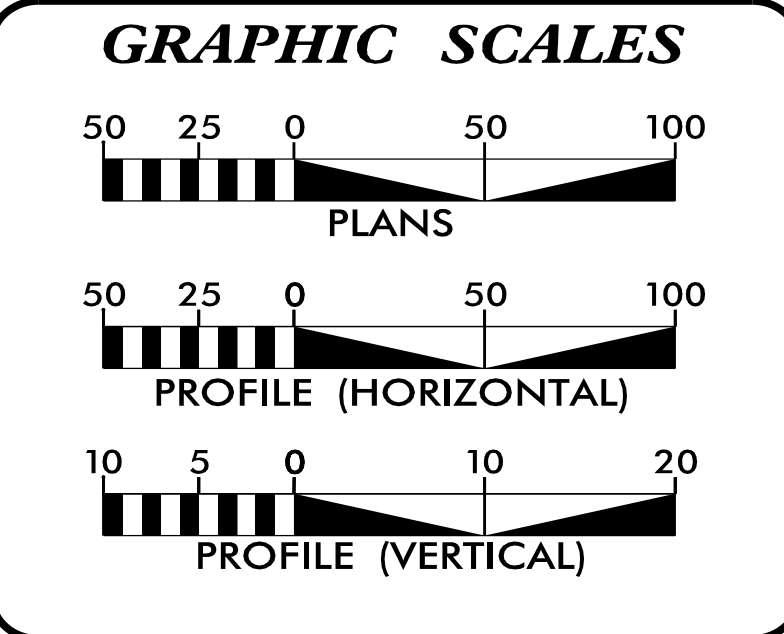
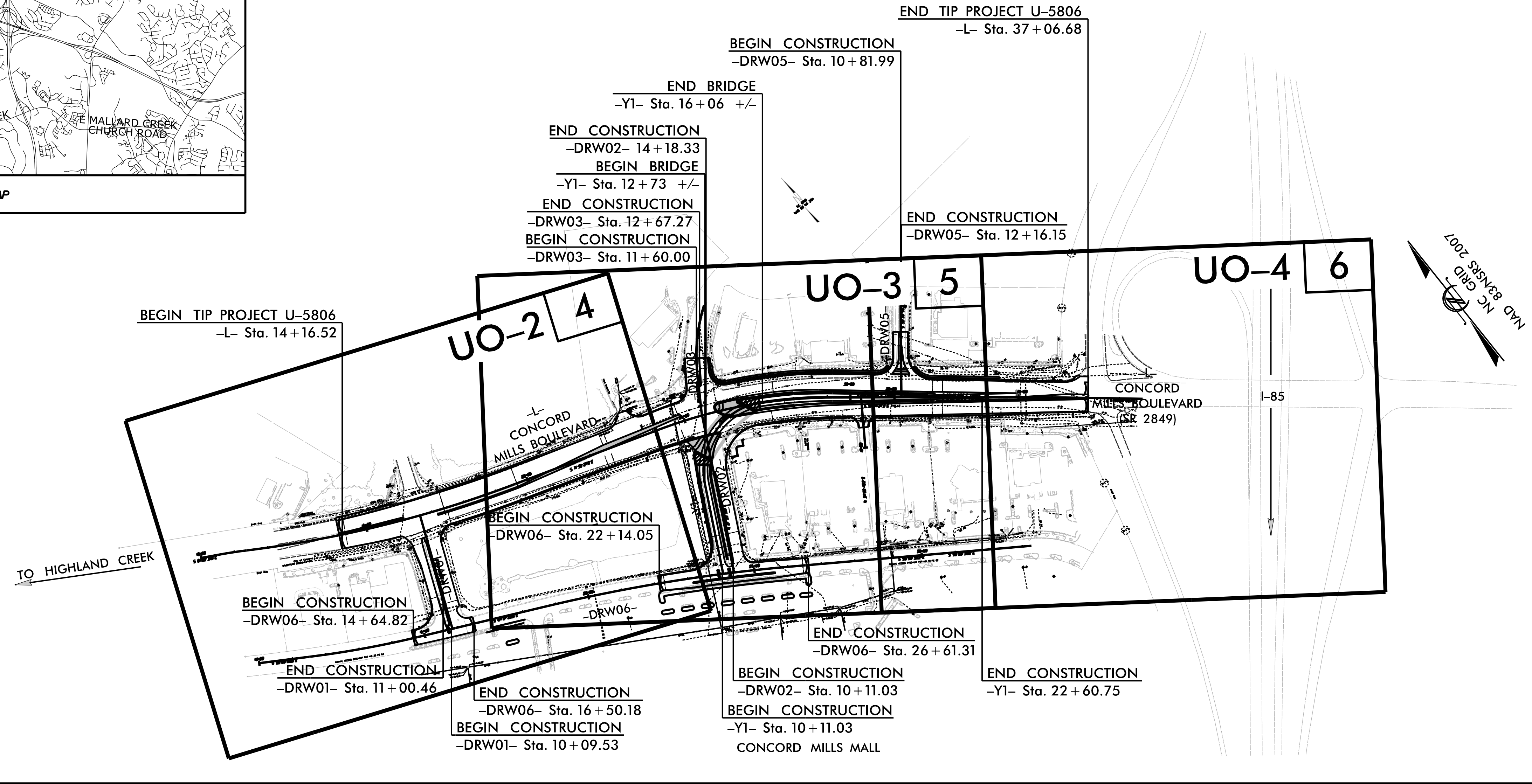
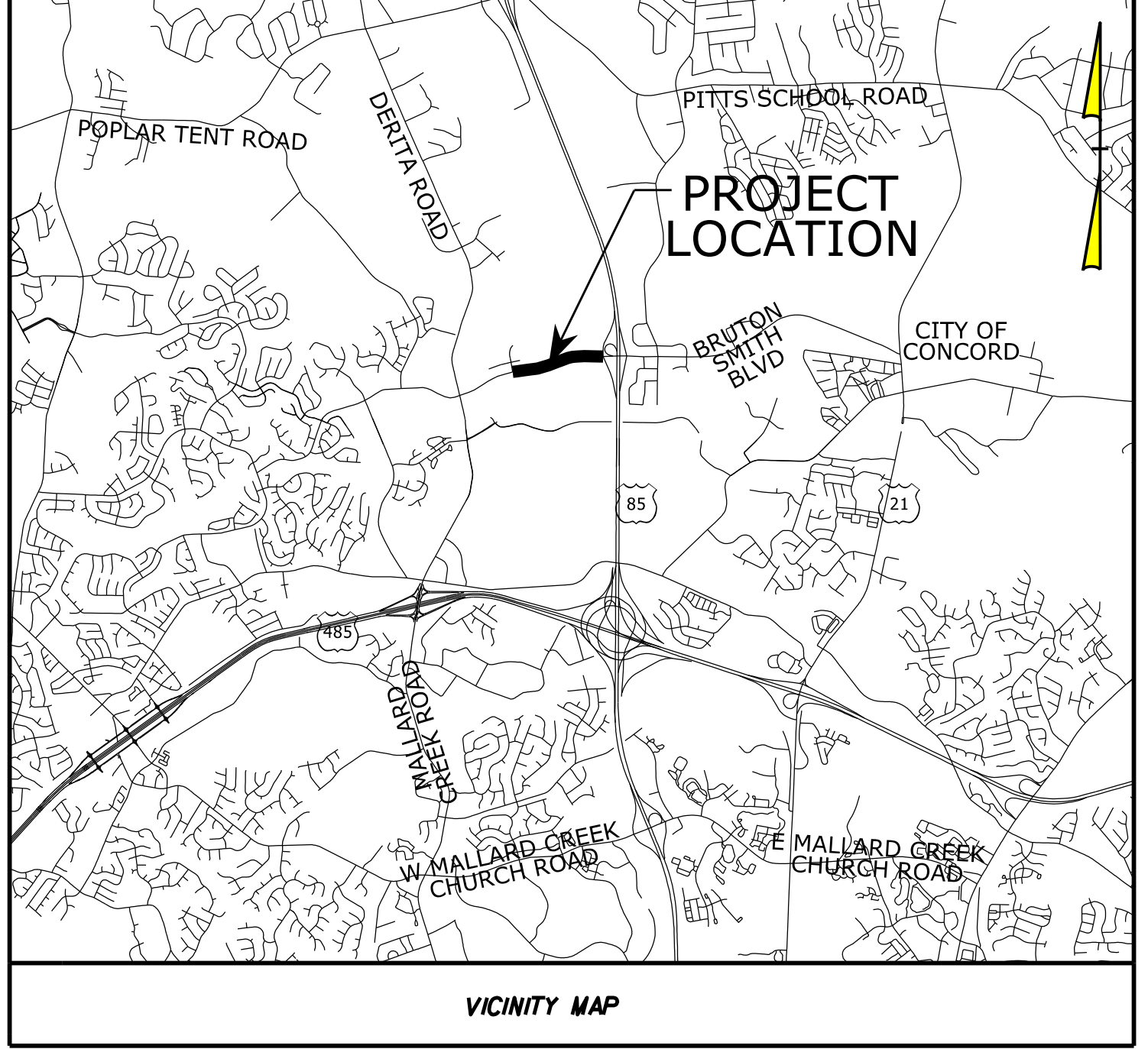
STATE OF NORTH CAROLINA
DIVISION OF HIGHWAYS

T.I.P. NO.	SHEET NO.
U-5806	UO-1

NOTE:
ALL UTILITY WORK SHOWN ON THIS SHEET IS DONE BY OTHERS.
NO PAYMENT WILL BE MADE TO THE CONTRACTOR FOR UTILITY WORK SHOWN ON THIS SHEET.

**UTILITIES BY OTHERS PLANS
CABARRUS COUNTY**

LOCATION: CONCORD MILLS BOULEVARD, MALL ENTRANCE
TYPE OF WORK: UNDERGROUND POWER AND COMMUNICATION RELOCATIONS



SHEET NO.:	DESCRIPTION:
UO-1	TITLE SHEET
UO-2 THRU UO-4	UBO PLAN SHEETS

UTILITY OWNERS WITH CONFLICTS

(A) POWER (DISTRIBUTION) - CITY OF CONCORD
 (B) COMMUNICATIONS - WINDSTREAM
 (C) COMMUNICATIONS - TIME WARNER /CHARTER
 (D) COMMUNICATIONS - AT&T

PREPARED IN THE OFFICE OF:

JOHN FAISON UTILITY PROJECT MANAGER
JOHN FAISON PROJECT UTILITY COORDINATOR
JOSH BARBOUR PROJECT UTILITY DESIGNER

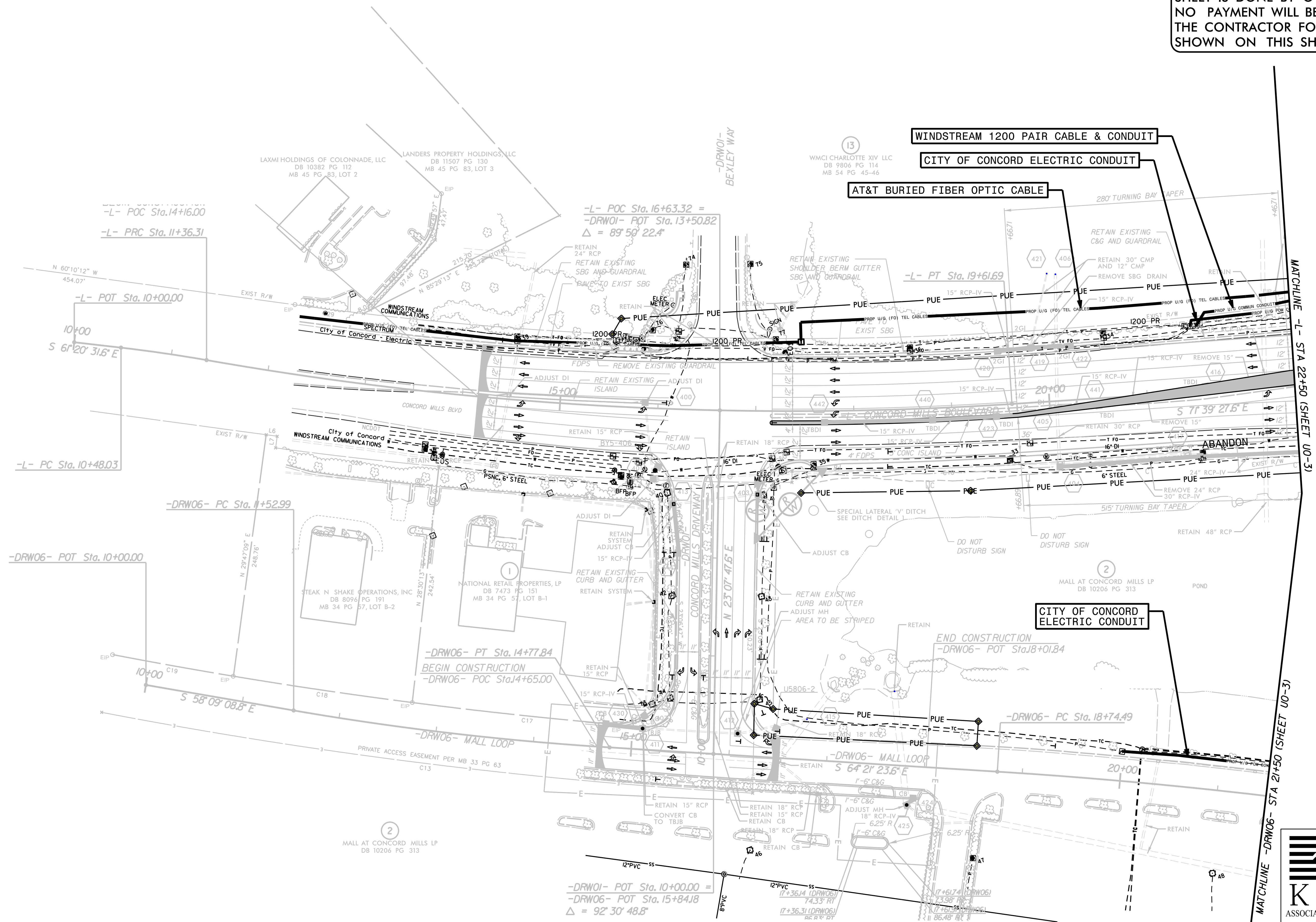
**DIVISION OF HIGHWAYS
UTILITIES UNIT**
 1555 MAIL SERVICES CENTER
 RALEIGH, NC 27699-1555
 PHONE (919) 707-6690
 FAX (919) 250-4151

CARL BARCLAY UTILITIES REGIONAL ENGINEER
MICHAEL BRIGHT UTILITIES ENGINEER
AMY DUPREE UTILITIES AREA COORDINATOR
GREG SEALY UTILITIES COORDINATOR

11:44:17 AM
290_001_U5806_ut_tsh_U001.psh.dgn
Division

UTILITIES BY OTHERS

NOTE:
ALL UTILITY WORK SHOWN ON THIS SHEET IS DONE BY OTHERS.
NO PAYMENT WILL BE MADE TO THE CONTRACTOR FOR UTILITY WORK SHOWN ON THIS SHEET.



5/14/99
 10/17/14 AM
 290 003 U5806.ut_rdy4_U002_psh.dgn
 10/17/14 AM
 290 003 U5806.ut_rdy4_U002_psh.dgn

KCI
ASSOCIATES OF N.C.

CIVIL ENGINEERS
ENVIRONMENTAL - CEI
LAND SURVEYING
SUBSURFACE UTILITY
ENGINEERING

4505 FALLS OF NEUSE RD
SUITE 400
RALEIGH, NORTH CAROLINA 27609
(919) 783-9214
WWW.KCI.COM

UTILITIES BY OTHERS

NOTE:
ALL UTILITY WORK SHOWN ON THIS SHEET IS DONE BY OTHERS.
NO PAYMENT WILL BE MADE TO THE CONTRACTOR FOR UTILITY WORK SHOWN ON THIS SHEET.

WINDSTREAM 1200 PAIR CABLE & CONDUIT

CITY OF CONCORD ELECTRIC CONDUIT

AT&T PEDESTAL

TIME WARNER/CHARTER VAULT

CITY OF CONCORD TRANSFORMER

CITY OF CONCORD SWITCHGEAR

WINDSTREAM 1500 PAIR CABLE & CONDUIT

CITY OF CONCORD ELECTRIC CONDUIT

AT&T BURIED FIBER OPTIC CABLE

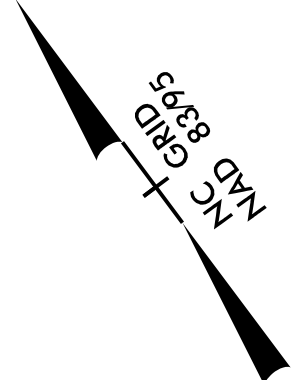
CITY OF CONCORD TRANSFORMER

CITY OF CONCORD ELECTRIC CONDUIT

CITY OF CONCORD ELECTRIC CONDUIT

AT&T BURIED FIBER OPTIC CABLE

WINDSTREAM 600 PAIR CABLE & CONDUIT



MATCHLINE -L- STA 22+50 (SHEET U0-2)

MATCHLINE -DRW06- STA 21+50 (SHEET U0-2)

MATCHLINE -L- STA 32+50 (SHEET U0-4)

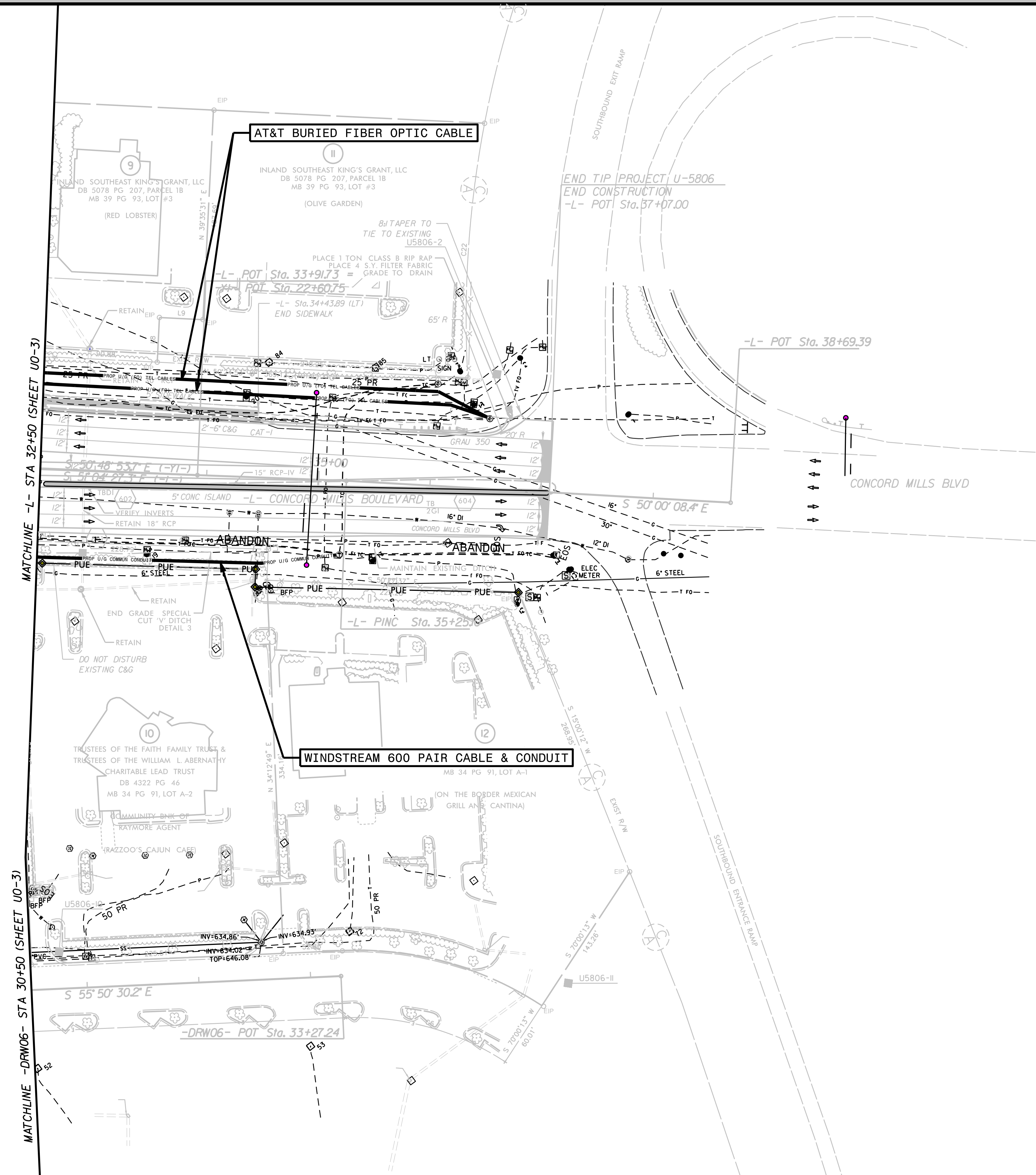
MATCHLINE -DRW06- STA 30+50 (SHEET U0-4)

5/14/99
 290_0233_11_5806_ut_rdy5_U003_psh.dgn

CIVIL ENGINEERS
ENVIRONMENTAL - CEI
LAND SURVEYING
SUBSURFACE UTILITY ENGINEERING
KCI
 ASSOCIATES OF N.C.
 4505 FALLS OF NEUSE RD
 SUITE 400
 RALEIGH, NORTH CAROLINA 27609
 (919) 783-9214
 WWW.KCI.COM

UTILITIES BY OTHERS

NOTE:
 ALL UTILITY WORK SHOWN ON THIS SHEET IS DONE BY OTHERS.
 NO PAYMENT WILL BE MADE TO THE CONTRACTOR FOR UTILITY WORK SHOWN ON THIS SHEET.



10:39:55 AM 5/14/2017 8:15:07 PM C:\Users\joshua\Documents\4604290_004_U5806_U0-4.psd.dgn