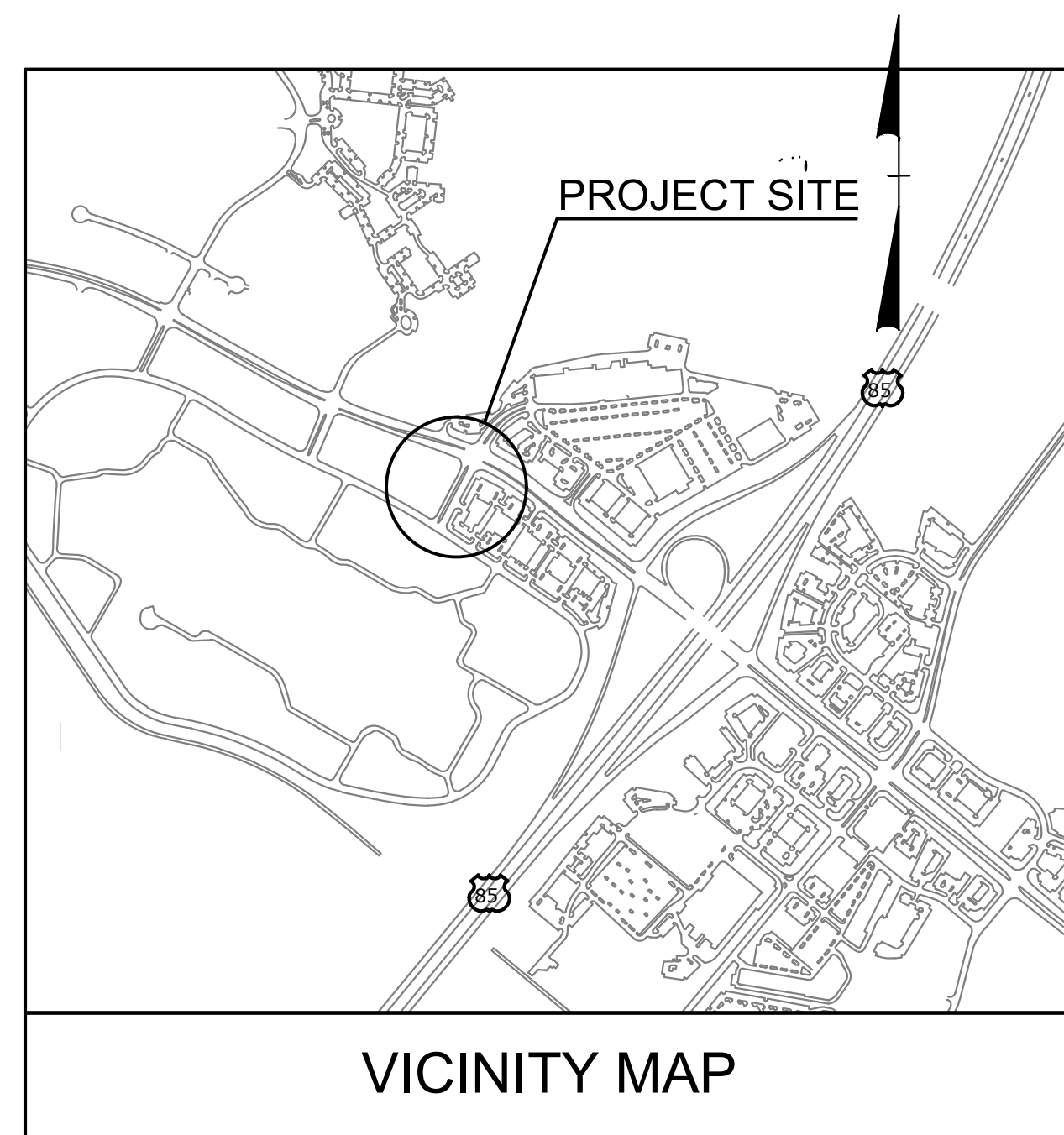
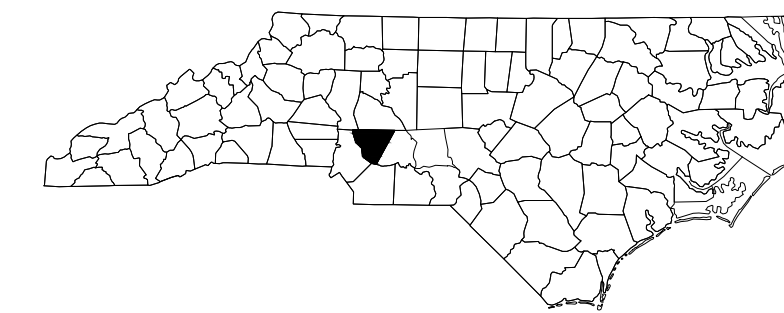


**This electronic collection of documents is provided
for the convenience of the user
and is Not a Certified Document –**

**The documents contained herein were originally issued
and sealed by the individuals whose names and license
numbers appear on each page, on the dates appearing
with their signature on that page.**

**This file or an individual page
shall not be considered a certified document.**

T.I.P. NO.	SHEET NO.
U-5806	UC-1



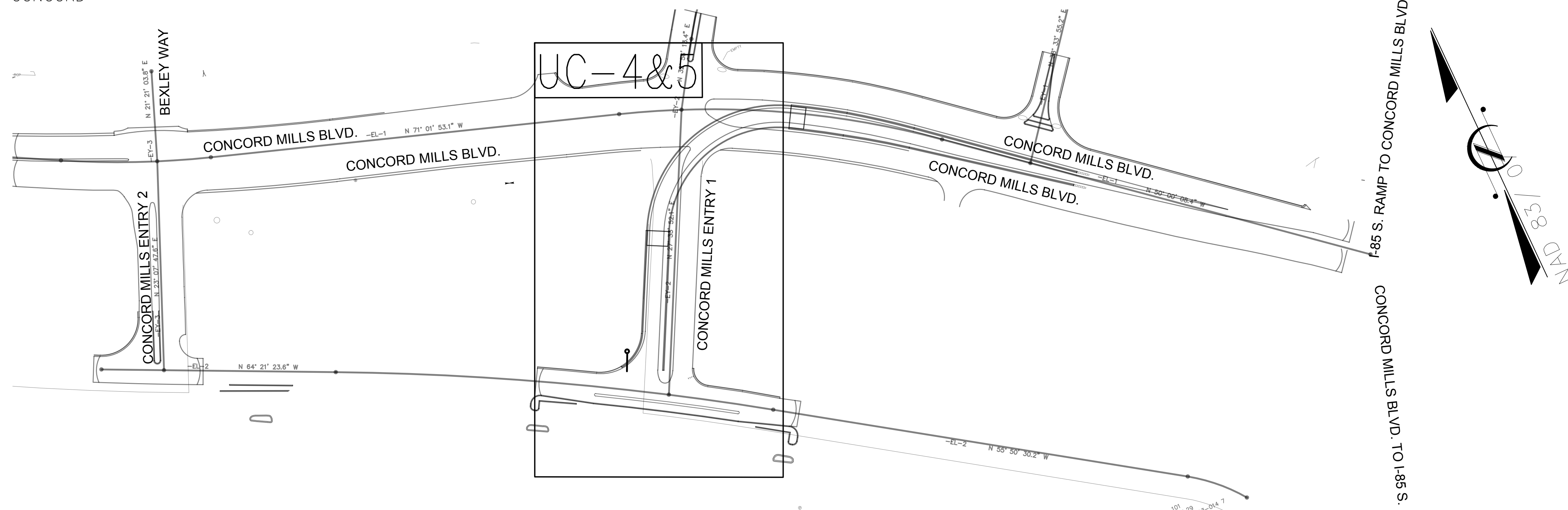
VICINITY MAP

THIS PROJECT IS WITHIN THE MUNICIPAL BOUNDARY OF THE CITY OF CONCORD

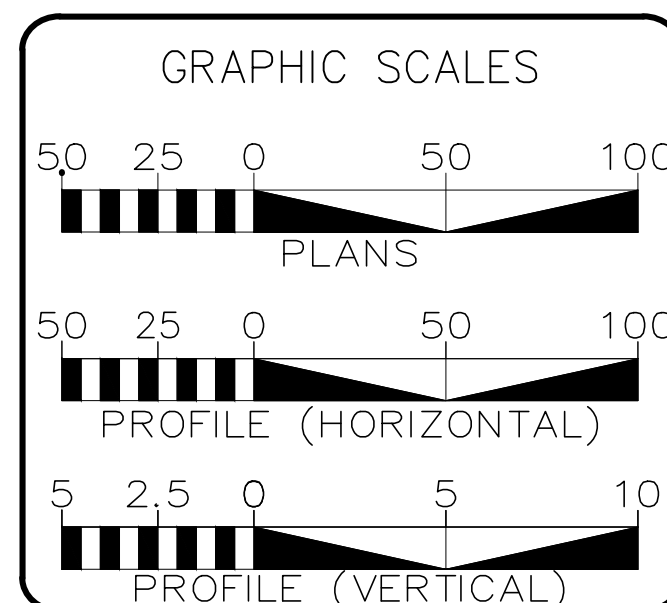
STATE OF NORTH CAROLINA DIVISION OF HIGHWAYS

UTILITY CONSTRUCTION PLANS CABARRUS COUNTY

LOCATION: INTERSECTION OF SR-2894 (CONCORD MILLS BLVD.)
AND ENTRANCE No. 1 KINGS GRANT PAVILION
TYPE OF WORK: WATER LINE AND SEWER MAIN RELOCATIONS.



DOCUMENT NOT CONSIDERED FINAL
UNLESS ALL SIGNATURES COMPLETED

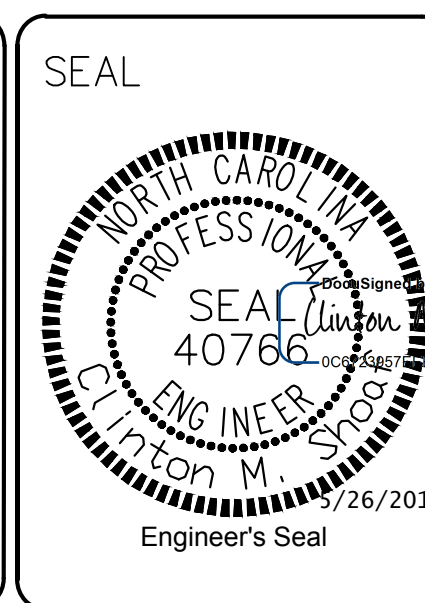


SHEET NO.	DESCRIPTION
UC-1	TITLE SHEET
UC-2	UTILITY/ SYMBOLOGY
UC-3	NOTES
UC-3A	DETAILS
UC-4 THRU UC-5	UTILITY CONSTRUCTION SHEETS

WATER AND SEWER OWNERS ON PROJECT	
(A)	WATER - CITY OF CONCORD
(B)	SANITARY SEWER - CITY OF CONCORD

PREPARED IN THE OFFICE OF
Concord
NORTH CAROLINA
High Performance Living

ENGINEERING DEPARTMENT
CITY OF CONCORD
P.O. BOX 308
CONCORD N.C. 28026
(704) 920-5425
CLINTON SHOAF, P.E. - DESIGN ENGINEER



DIVISION OF HIGHWAYS
UTILITIES UNIT

1555 MAIL SERVICES CENTER
RALEIGH NC 27699-1555
PHONE (919) 707-6690
FAX (919) 250-4151

Carl Barclay, PE	UTILITIES REGIONAL ENGINEER
Michael Bright	UTILITIES ENGINEER
Amy Dupree	UTILITY AREA COORDINATOR
Greg Sealy	UTILITY COORDINATOR

STATE OF NORTH CAROLINA DIVISION OF HIGHWAYS --- --- UTILITIES PLAN SHEET SYMBOLS

PROJECT REFERENCE NO. U-5806	SHEET NO. UC-2
---------------------------------	-------------------

DESIGNED BY: CMS DRAWN BY: EES CHECKED BY: CMS APPROVED BY: DATE: 12/08/2016 REVISED:	 UTILITIES UNIT UTILITIES ENGINEERING SECTION 1555 MAIL SERVICES CENTER RALEIGH, NC 27699-1555 PHONE (919) 707-6690 FAX (919) 250-4151
--	--

UTILITY CONSTRUCTION

DOCUMENT NOT CONSIDERED FINAL
UNLESS ALL SIGNATURES COMPLETED

PROPOSED WATER SYMBOLS

Water Line (Sized as Shown)		
111/4 Degree Bend		
221/2 Degree Bend		
45 Degree Bend		
90 Degree Bend		
Plug		
Tee		
Cross		
Reducer		
Gate Valve		
Butterfly Valve		
Tapping Valve		
Line Stop		
Line Stop with Bypass		
Blow Off		
Fire Hydrant		
Relocate Fire Hydrant		
Remove Fire Hydrant		
Water Meter		
Relocate Water Meter		
Remove Water Meter		
Water Pump Station		
RPZ Backflow Preventer		
DCV Backflow Preventer		
Relocate RPZ Backflow Preventer		
Relocate DCV Backflow Preventer		

PROPOSED SEWER SYMBOLS

Gravity Sewer Line (Sized as Shown)		
Force Main Sewer Line (Sized as Shown)		
Manhole (Sized per Note)		
Sewer Pump Station		

PROPOSED MISCELLANEOUS UTILITIES SYMBOLS

Power Pole		
Telephone Pole		
Joint Use Pole		
Telephone Pedestal		
Utility Line by Others (Type as Shown)		
Trenchless Installation		
Encasement by Open Cut		
Encasement		

Power Pole		
Telephone Pole		
Joint Use Pole		
Utility Pole		
Utility Pole with Base		
H-Frame Pole		
Power Transmission Line Tower		
Water Manhole		
Power Manhole		
Telephone Manhole		
Sanitary Sewer Manhole		
Hand Hole for Cable		
Power Transformer		
Telephone Pedestal		
CATV Pedestal		
Gas Valve		
Gas Meter		
Located Miscellaneous Utility Object		
Abandoned According to Utility Records		
End of Information		

	PROPERTY LINE AND IRON PIN
	PROPOSED RIGHT OF WAY/PERMANENT EASEMENT
	EXISTING RIGHT OF WAY/PERMANENT EASEMENT
	WATERWAY/DITCH LINE

Thrust Block		
Air Release Valve		
Utility Vault		
Concrete Pier		
Steel Pier		
Plan Note		
Pay Item Note		

EXISTING UTILITIES SYMBOLS

*Underground Power Line		
*Underground Telephone Cable		
*Underground Telephone Conduit		
*Underground Fiber Optics Telephone Cable		
*Underground TV Cable		
*Underground Fiber Optics TV Cable		
*Underground Gas Pipeline		
Aboveground Gas Pipeline		
*Underground Water Line		
Aboveground Water Line		
*Underground Gravity Sanitary Sewer Line		
Aboveground Gravity Sanitary Sewer Line		
*Underground SS Forced Main Line		
Underground Unknown Utility Line		
SUE Test Hole		
Water Meter		
Water Valve		
Fire Hydrant		
Sanitary Sewer Cleanout		

***For Existing Utilities**

Utility Line Drawn from Record (Type as Shown) _____

Designated Utility Line (Type as Shown) _____

© 2017 Engineering Project/Project/2017/04/15/000/Concord Hills Blvd/Project/Sheet/UC-2/17/08/2016/10:00am

PREPARED BY
 ENGINEERING DEPARTMENT
 CITY OF CONCORD
 CABARRUS COUNTY
 P.O. BOX 308
 CONCORD N.C. 28026
 (704) 920-5425

2/26/2017
 Engineer's Seal

GENERAL NOTES:

1. THE PROPOSED UTILITY CONSTRUCTION SHALL MEET THE APPLICABLE REQUIREMENTS OF THE NC DEPARTMENT OF TRANSPORTATION'S "STANDARD SPECIFICATIONS FOR ROADS AND STRUCTURES" DATED JANUARY 2012.
2. THE EXISTING UTILITIES BELONG TO CITY OF CONCORD .
3. ALL WATER LINES TO BE INSTALLED WITHIN COMPLIANCE OF THE RULES AND REGULATIONS OF THE NORTH CAROLINA DEPARTMENT OF ENVIRONMENTAL AND NATURAL RESOURCES, DIVISION OF WATER RESOURCES, PUBLIC WATER SUPPLY SECTION. ALL SEWER LINES TO BE INSTALLED WITHIN COMPLIANCE OF THE RULES AND REGULATIONS OF THE NORTH CAROLINA DEPARTMENT OF ENVIRONMENT AND NATURAL RESOURCES, DIVISION OF WATER RESOURCES, WATER QUALITY SECTION. PERFORM ALL WORK IN ACCORDANCE WITH THE APPLICABLE PLUMBING CODES.
4. THE UTILITY OWNER OWNS THE EXISTING UTILITY FACILITIES AND WILL OWN THE NEW UTILITY FACILITIES AFTER ACCEPTANCE BY THE DEPARTMENT. THE DEPARTMENT OWNS THE CONSTRUCTION CONTRACT AND HAS ADMINISTRATIVE AUTHORITY. COMMUNICATIONS AND DECISIONS BETWEEN THE CONTRACTOR AND UTILITY OWNER ARE NOT BINDING UPON THE DEPARTMENT OR THIS CONTRACT UNLESS AUTHORIZED BY THE ENGINEER. AGREEMENTS BETWEEN THE UTILITY OWNER AND CONTRACTOR FOR THE WORK THAT IS NOT PART OF THIS CONTRACT OR IS SECONDARY TO THIS CONTRACT ARE ALLOWED, BUT ARE NOT BINDING UPON THE DEPARTMENT.
5. PROVIDE ACCESS FOR THE DEPARTMENT PERSONNEL AND THE OWNER'S REPRESENTATIVES TO ALL PHASES OF CONSTRUCTION. NOTIFY DEPARTMENT PERSONNEL AND THE UTILITY OWNER TWO WEEKS PRIOR TO COMMENCEMENT OF ANY WORK AND ONE WEEK PRIOR TO SERVICE INTERRUPTION. KEEP UTILITY OWNERS' REPRESENTATIVES INFORMED OF WORK PROGRESS AND PROVIDE OPPORTUNITY FOR INSPECTION OF CONSTRUCTION AND TESTING.
6. THE PLANS DEPICT THE BEST AVAILABLE INFORMATION FOR THE LOCATION, SIZE, AND TYPE OF MATERIAL FOR ALL EXISTING UTILITIES. MAKE INVESTIGATIONS FOR DETERMINING THE EXACT LOCATION, SIZE, AND TYPE MATERIAL OF THE EXISTING FACILITIES AS NECESSARY FOR THE CONSTRUCTION OF THE PROPOSED UTILITIES AND FOR AVOIDING DAMAGE TO EXISTING FACILITIES. REPAIR ANY DAMAGE INCURRED TO EXISTING FACILITIES TO THE ORIGINAL OR BETTER CONDITION AT NO ADDITIONAL COST TO THE DEPARTMENT.
7. MAKE FINAL CONNECTIONS OF THE NEW WORK TO THE EXISTING SYSTEM WHERE INDICATED ON THE PLANS, AS REQUIRED TO FIT THE ACTUAL CONDITIONS, OR AS DIRECTED.
8. MAKE CONNECTIONS BETWEEN EXISTING AND PROPOSED UTILITIES AT TIMES MOST CONVENIENT TO THE PUBLIC, WITHOUT ENDANGERING THE UTILITY SERVICE, AND IN ACCORDANCE WITH THE UTILITY OWNER'S REQUIREMENTS. MAKE CONNECTIONS ON WEEKENDS, AT NIGHT, AND ON HOLIDAYS IF NECESSARY.
9. ALL UTILITY MATERIALS SHALL BE APPROVED PRIOR TO DELIVERY TO THE PROJECT. SEE 1500-7, " SUBMITTALS AND RECORDS" IN SECTION 1500 OF THE STANDARD SPECIFICATIONS.

PROJECT SPECIFIC NOTES:

1. PROPOSED WATER LINE FROM STATION 0+00 TO STATION 5+31 SHALL BE D.I.R.J. AND HDPE (DUCTILE IRON RESTRAINED JOINT AND HIGH DENSITY POLYETHYLENE) PIPE.
2. PROPOSED SANITARY SEWER LINE FROM STATION 3+30 TO STATION 3+70 SHALL BE PVC (POLYVINYL CHLORIDE)
3. CONTRACTOR'S ATTENTION IS DIRECTED TO SECTIONS 102, 107, AND 1550 OF THE STANDARD SPECIFICATIONS CONCERNING TRENCHLESS INSTALLATION. IT IS CONTRACTOR'S RESPONSIBILITY TO HAVE BORE DESIGNED AND SEALED BY A LICENSED NORTH CAROLINA PROFESSIONAL ENGINEER. NO DAMAGE IS ALLOWED TO RIVER, WETLANDS, OR BUFFER ZONES.
4. IF HDPE PIPE IS INSTALLED BY DIRECTIONAL DRILL, IT SHALL BE FILLED WITH WATER AND NOT BE CONNECTED TO ANY OTHER PIPE OR FITTINGS FOR ONE WEEK FROM THE TIME OF INSTALLATION.

LIST OF STANDARD DETAILS

SEE SHEET UC-3A

1. ALL CITY OF CONCORD PUBLIC UTILITY EXTENSIONS AND SERVICE MATERIALS, EQUIPMENT, LABOR AND WORKMANSHIP SHALL BE IN ACCORDANCE WITH AND SUBJECT TO THE WATER AND SEWER AUTHORITIES OF CABARRUS COUNTY'S STANDARD SPECIFICATIONS: THE CITY OF CONCORD'S ORDINANCES, POLICIES AND STANDARD SPECIFICATIONS AND THE NORTH CAROLINA ADMINISTRATIVE CODE FOR WASTEWATER COLLECTION AND WATER DISTRIBUTION SYSTEMS. IN THE EVENT OF CONFLICT BETWEEN THE WATER AND SEWER AUTHORITY OF CABARRUS COUNTY'S STANDARD SPECIFICATIONS: THE CITY OF CONCORD'S ORDANCES, POLICIES, AND STANDARD SPECIFICATIONS OR THE NORTH CAROLINA ADMINISTRATIVE CODE. THE MORE RESTRICTIVE REQUIREMENTS SHALL APPLY.
2. ALL WATER LINES TO BE INSTALLED WITHIN COMPLIANCE OF THE RULES AND REGULATIONS OF THE NORTH CAROLINA DEPARTMENT OF ENVIRONMENTAL AND NATURAL RESOURCES, DIVISION OF WATER RESOURCES, PUBLIC WATER SUPPLY SECTION. ALL SEWER LINES TO BE INSTALLED WITHIN COMPLIANCE OF THE RULES AND REGULATIONS OF THE NORTH CAROLINA DEPARTMENT OF ENVIRONMENT AND NATURAL RESOURCES, DIVISION OF WATER RESOURCES, WATER QUALITY SECTION. PERFORM ALL WORK IN ACCORDANCE WITH THE APPLICABLE PLUMBING CODES.
3. THE UTILITY OWNER OWNS THE EXISTING UTILITY FACILITIES AND WILL OWN THE NEW UTILITY FACILITIES AFTER ACCEPTANCE BY THE DEPARTMENT. THE DEPARTMENT OWNS THE CONSTRUCTION CONTRACT AND HAS ADMINISTRATIVE AUTHORITY. COMMUNICATIONS AND DECISIONS BETWEEN THE CONTRACTOR AND UTILITY OWNER ARE NOT BINDING UPON THE DEPARTMENT OR THIS CONTRACT UNLESS AUTHORIZED BY THE ENGINEER. AGREEMENTS BETWEEN THE UTILITY OWNER AND CONTRACTOR FOR THE WORK THAT IS NOT PART OF THIS CONTRACT OR IS SECONDARY TO THIS CONTRACT ARE ALLOWED, BUT ARE NOT BINDING UPON THE DEPARTMENT.
4. PROVIDE ACCESS FOR THE DEPARTMENT PERSONNEL AND THE OWNER'S REPRESENTATIVES TO ALL PHASES OF CONSTRUCTION. NOTIFY DEPARTMENT PERSONNEL AND THE UTILITY OWNER TWO WEEKS PRIOR TO COMMENCEMENT OF ANY WORK AND ONE WEEK PRIOR TO SERVICE INTERRUPTION. KEEP UTILITY OWNERS' REPRESENTATIVES INFORMED OF WORK PROGRESS AND PROVIDE OPPROTUNITY FOR INSPECTION OF CONSTRUCTION AND TESTING.
5. THE PLANS DEPICT THE BEST AVAILABLE INFORMATION FOR THE LOCATION, SIZE, AND TYPE OF MATERIAL FOR ALL EXISTING UTILITIES. MAKE INVESTIGATIONS FOR DETERMINING THE EXACT LOCATION, SIZE, AND TYPE MATERIAL OF THE EXISTING FACILITIES AS NECESSARY FOR THE CONSTRUCTION OF THE PROPOSED UTILITIES AND FOR AVOIDING DAMAGE TO EXISTING FACILITIES. REPAIR ANY DAMAGE INCURRED TO EXISTING FACILITIES TO THE ORIGINAL OR BETTER CONDITION AT NO ADDITIONAL COST TO THE DEPARTMENT.
6. MAKE FINAL CONNECTIONS OF THE NEW WORK TO THE EXISTING SYSTEM WHERE INDICATED ON THE PLANS, AS REQUIRED TO FIT THE ACTUAL CONDITIONS, OR AS DIRECTED.
7. MAKE CONNECTIONS BETWEEN EXISTING AND PROPOSED UTILITIES AT TIMES MOST CONVENIENT TO THE PUBLIC, WITHOUT ENDANGERING THE UTILITY SERVICE, AND IN ACCORDANCE WITH THE UTILITY OWNER'S REQUIREMENTS. MAKE CONNECTIONS ON WEEKENDS, AT NIGHT, AND ON HOLIDAYS IF NECESSARY.
8. ALL UTILITY MATERIALS SHALL BE APPROVED PRIOR TO DELIVERY TO THE PROJECT. SEE 1500-7, " SUBMITTALS AND RECORDS" IN SECTION 1500 OF THE STANDARD SPECIFICATIONS. (2012)

CONSTRUCTION SEQUENCE

1. CONTRACTOR SHALL ENSURE THAT ALL NECESSARY PERMITS HAVE BEEN RECEIVED AND THAT THOSE REQUIRED TO BE DISPLAYED ON-SITE ARE AVAILABLE.
2. CONTRACTOR SHALL HOLD PRE-CONSTRUCTION MEETING AT LEAST 48 HOURS BEFORE THE ACTUAL START OF CONSTRUCTION.
3. CONTRACTOR SHALL CONTACT CAROLINA ONE CALL AND ALL ENTITIES HAVING BURIED UTILITIES AT LEAST 72 HOURS PRIOR TO DIGGING OR AS DIRECTED AT THE PRE-CONSTRUCTION MEETING.
4. CONTRACTOR SHALL MAINTAIN TRAFFIC AND SAFETY CONTROL MEASURES AT ALL TIMES ON THE PROJECT. (SEE TRAFFIC CONTROL.)
5. CONTRACTOR SHALL INSTALL TEMPORARY CONSTRUCTION ENTRANCES (IF ANY) AT EACH POINT OF ACCESS TO STORAGE AND CONSTRUCTION AREAS.
6. SEDIMENT AND EROSION CONTROL MEASURES SHALL BE INSTALLED IN ACCORDANCE WITH PLANS AND BEFORE STARTING WORK.
7. CONTRACTOR SHALL CLEAR RIGHT-OF-WAY IF NECESSARY.
8. STOCKPILE RIP-RAP ON SITE AND INSTALL ALL OTHER EROSION CONTROL MEASURES WHERE THE WORK IS OCCURRING. THE CONTRACTOR SHALL NOT INSTALL EROSION CONTROL MEASURES IN AREAS WHERE THE WORK WILL NOT OCCUR FOR SOME TIME. ADDITIONAL EROSION CONTROL MEASURES MAY BE REQUIRED BY THE CITY/PROJECT ENGINEER OR UPON RECOMMENDATION OF NC DENR PERSONNEL AS CONDITIONS WARRANT.
9. IN AREAS WHERE IT IS NOT FEASIBLE TO INSTALL EROSION CONTROL DEVICES, ALL DISTURBED AREAS MUST BE SEEDED AND MULCHED BY THE CONTRACTOR WITHIN THREE DAYS OF INITIAL DISTURBANCE. TEMPORARY SEEDING SHALL BE REQUIRED ON ALL OTHER AREAS TO BE DISTURBED FOR A PERIOD OF 10 DAYS OR LONGER.
10. CONTRACTOR SHALL COORDINATE ALL BLOW-OFFS AND TESTING WITH THE CITY ENGINEERING DEPARTMENT'S CONSTRUCTION ADMINISTRATOR AT LEAST 24 HOURS IN ADVANCE OF SUCH WORK. NOTIFY THE RESPONSE AREA FIRE DEPARTMENT IF EXISTING SYSTEM VALVES NEED TO BE SHUT OFF IN THE COURSE OF THE WORK.
11. UPON COMPLETION OF THE INSTALLATION AND WITH APPROVAL OF NC DENR-DLR, ALL EROSION CONTROL DEVICES EXCEPT FOR CREEK/STREAM BANK STABILIZATION SHALL BE REMOVED AND DISPOSED OF IN AN ACCEPTABLE MANNER. EACH SECTION SHALL BE SEEDED AT EARLIEST POSSIBLE DATE AFTER INSTALLATION OF PIPE, STRUCTURE, OR ACCESS.
12. ONCE GROUND COVER IS FIRMLY ESTABLISHED, ALL TEMPORARY EROSION CONTROL MEASURES SHALL BE REMOVED WITH THE APPROVAL OF NC DENR-DLR.
13. CONTRACTOR SHALL REFERENCE SPECIAL CONDITIONS FOR JOB SEQUENCE AND OTHER DIRECTIONS, IF ANY. CONTRACTOR SHALL COORDINATE CONSTRUCTION ACTIVITY WITH THE CITY ENGINEERING DEPARTMENT.

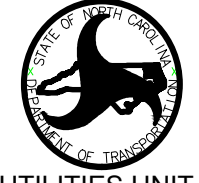
GENERAL NOTES

1. ALL MATERIALS, EQUIPMENT, LABOR, AND WORKMANSHIP IS TO BE IN ACCORDANCE WITH AND SUBJECT TO THE WATER AND SEWER AUTHORITY OF CABARRUS COUNTY'S STANDARD SPECIFICATIONS; THE CITY OF CONCORD'S ORDINANCES, POLICIES, AND STANDARD SPECIFICATIONS, AND NCDOT STANDARD SPECIFICATIONS, AND THE NORTH CAROLINA ADMINISTRATIVE CODE FOR WASTEWATER COLLECTION AND WATER DISTRIBUTION SYSTEMS. IN THE EVENT OF CONFLICT BETWEEN THE WATER AND SEWER AUTHORITY OF CABARRUS COUNTY'S STANDARD SPECIFICATION; THE CITY OF CONCORD'S ORDINANCES, POLICIES, AND STANDARD SPECIFICATIONS,AND NCDOT STANDARD SPECIFICATIONS, OR THE NORTH CAROLINA ADMINISTRATIVE CODE, THE MORE RESTRICTIVE REQUIREMENTS SHALL APPLY.
2. ALL SEDIMENT AND EROSION CONTROL MEASURES SHALL CONFORM TO THE LATEST STANDARDS OF THE N.C. SEDIMENTATION POLLUTION CONTROL ACT AND APPLICABLE LOCAL AND FEDERAL REQUIREMENTS.
3. CONTRACTOR SHALL NOTIFY THE CONSTRUCTION ADMINISTRATOR OF THE CITY OF CONCORD ENGINEERING DEPARTMENT AT LEAST 48 HOURS IN ADVANCE OF BEGINNING WORK.
4. INDIVIDUAL WATER, GAS, SEWER, TELEPHONE, AND CABLE SERVICES MAY OR MAY NOT BE SHOWN ON THE PLANS. CONTRACTOR TO CONTACT APPROPRIATE AGENCY FOR FIELD LOCATIONS.
5. CITY OF CONCORD ELECTRIC, WATER, AND SEWER DEPARTMENT PERSONNEL WILL ASSIST THE CONTRACTOR IN LOCATING ALL CITY OF CONCORD UTILITY SERVICES AND LINES.
6. IF MAILBOX PULL-OFF AREAS ARE DISTURBED, CRUSHED STONE STABILIZER SHALL BE PLACED WITH SUFFICIENT LENGTH TO ACCOMMODATE VEHICULAR TRAFFIC. THESE AREAS SHALL BE MAINTAINED FOR THE ONE-YEAR WARRANTY PERIOD. THE COST OF THESE ITEMS SHALL BE INCLUDED IN THE COST OF LAYING PIPE.
7. THIS PROJECT IS NOT SUBJECT TO 100 YEAR FLOOD PER FIRM MAP 3710458900K, MARCH 2, 2009.
8. FIRE HYDRANT EXTENSIONS, IF NEEDED, SHALL BE INCLUDED IN THE COST OF THE HYDRANT INSTALLATION.
9. GATE OR BUTTERFLY VALVES, BLOW-OFFS, AND FIRE HYDRANTS MAY BE FIELD ADJUSTED 50 FEET IN EITHER DIRECTION WITH THE PERMISSION OF THE ENGINEERING AND WATER RESOURCES DEPARTMENTS.

RIGHT-OF-WAY NOTES

1. RIGHT-OF-WAY LINES AND PROPERTY LINES ARE SHOWN ON THE DESIGN DRAWINGS AND ARE FOR REFERENCE ONLY. FOR EXACT LOCATIONS REFER TO THE SURVEY PLATS BY THE CITY OF CONCORD'S CONSULTING REGISTERED LAND SURVEYOR OR BY THE CITY SURVEYOR.
2. REFER TO STANDARDS AND SPECIFICATIONS FOR WATER AND SEWER CONSTRUCTION FOR FURTHER DETAILS CONCERNING THE RIGHT-OF-WAY.

PROJECT REFERENCE NO.	SHEET NO.
U-5806	UC-3

DESIGNED BY: CMS	 <p>UTILITIES UNIT UTILITIES ENGINEERING SECTION</p> <p>1555 MAIL SERVICES CENTER RALEIGH NC 27699-1555 PHONE (919) 707-6690 FAX (919) 250-4151</p>
DRAWN BY: EES	
CHECKED BY: CMS	
APPROVED BY:	
DATE: 12/08/2016	
REVISED:	


UTILITY CONSTRUCTION

DOCUMENT NOT CONSIDERED FINAL
UNLESS ALL SIGNATURES COMPLETED

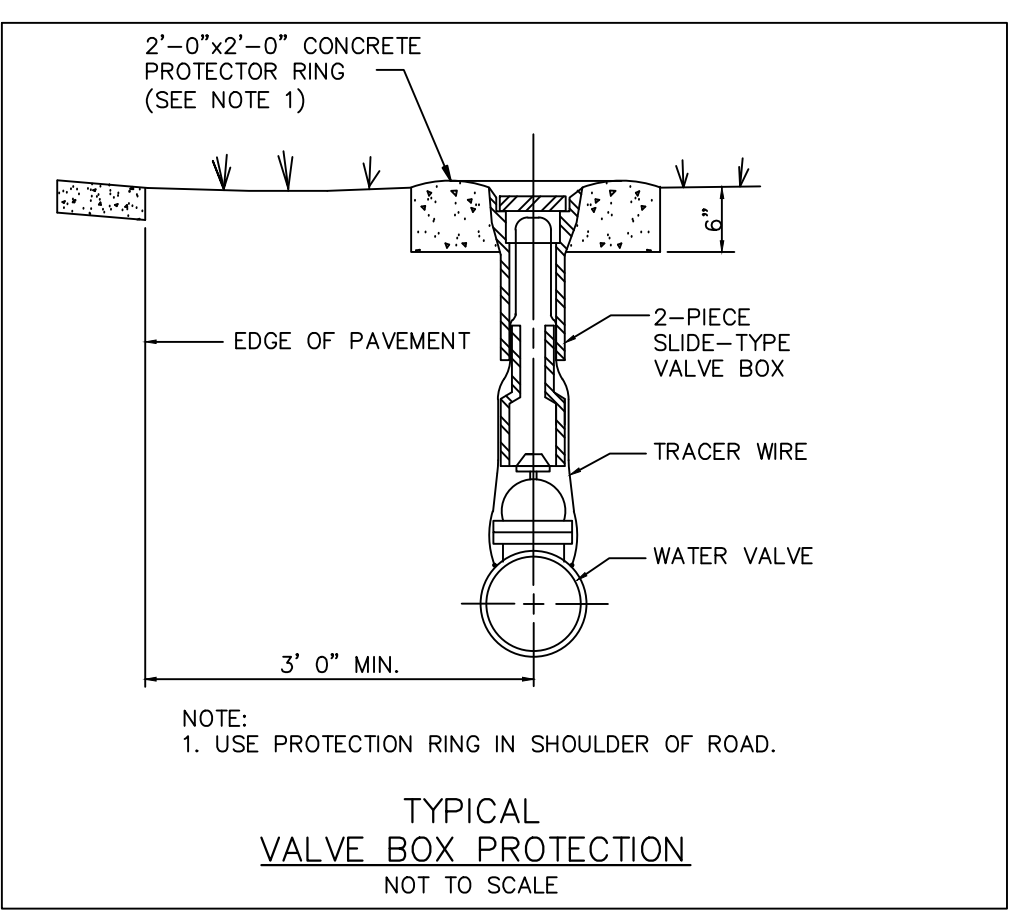
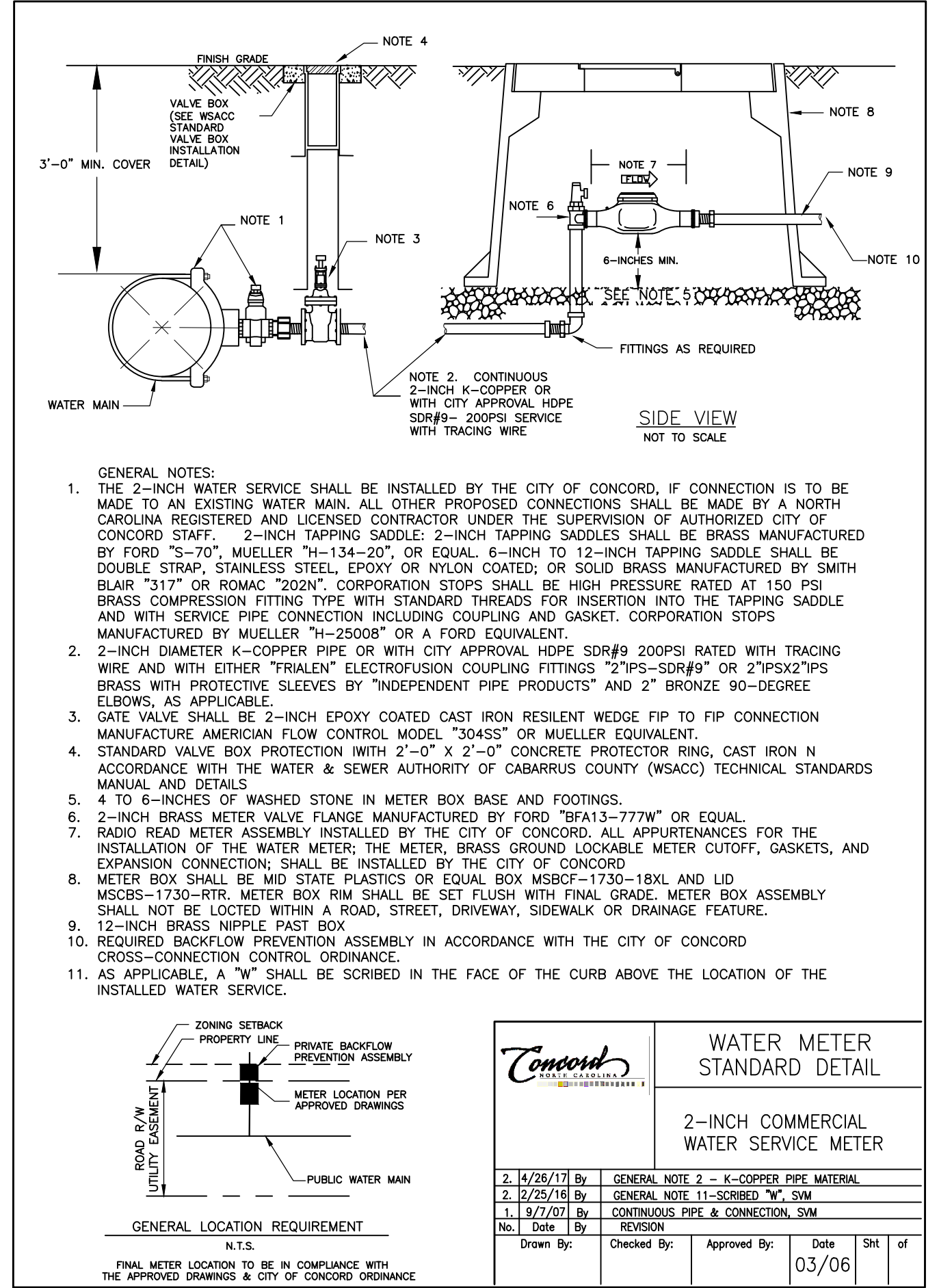
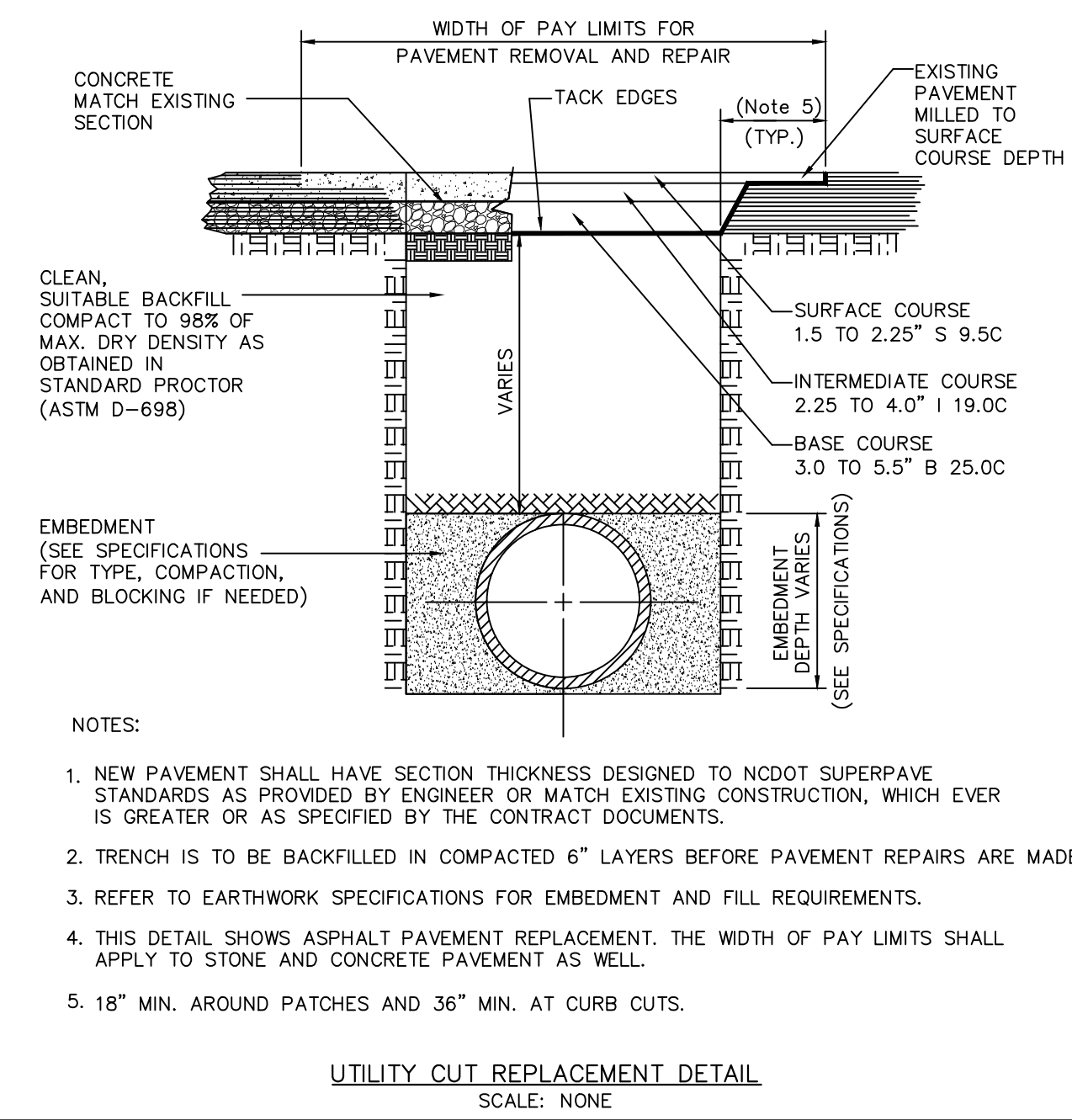
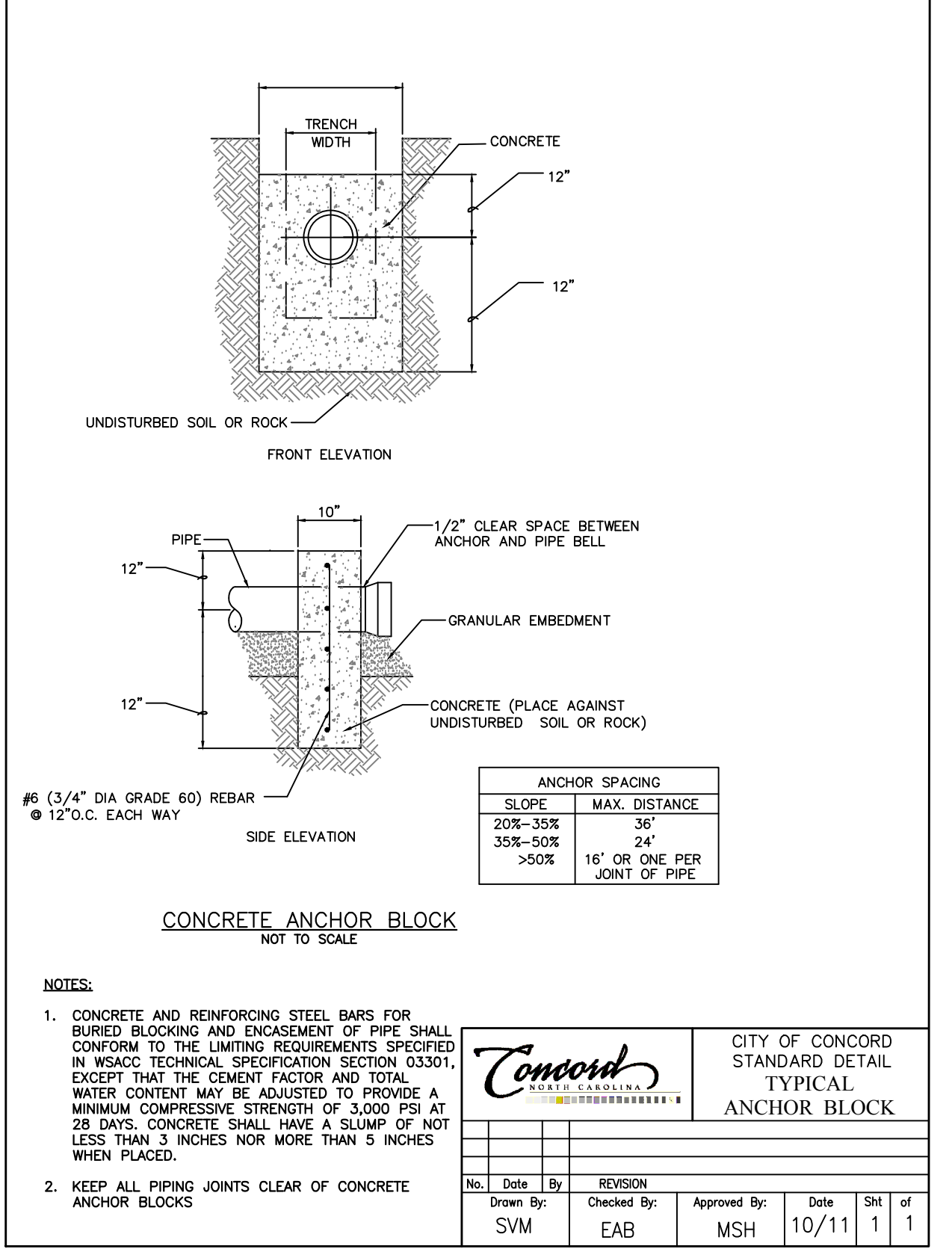
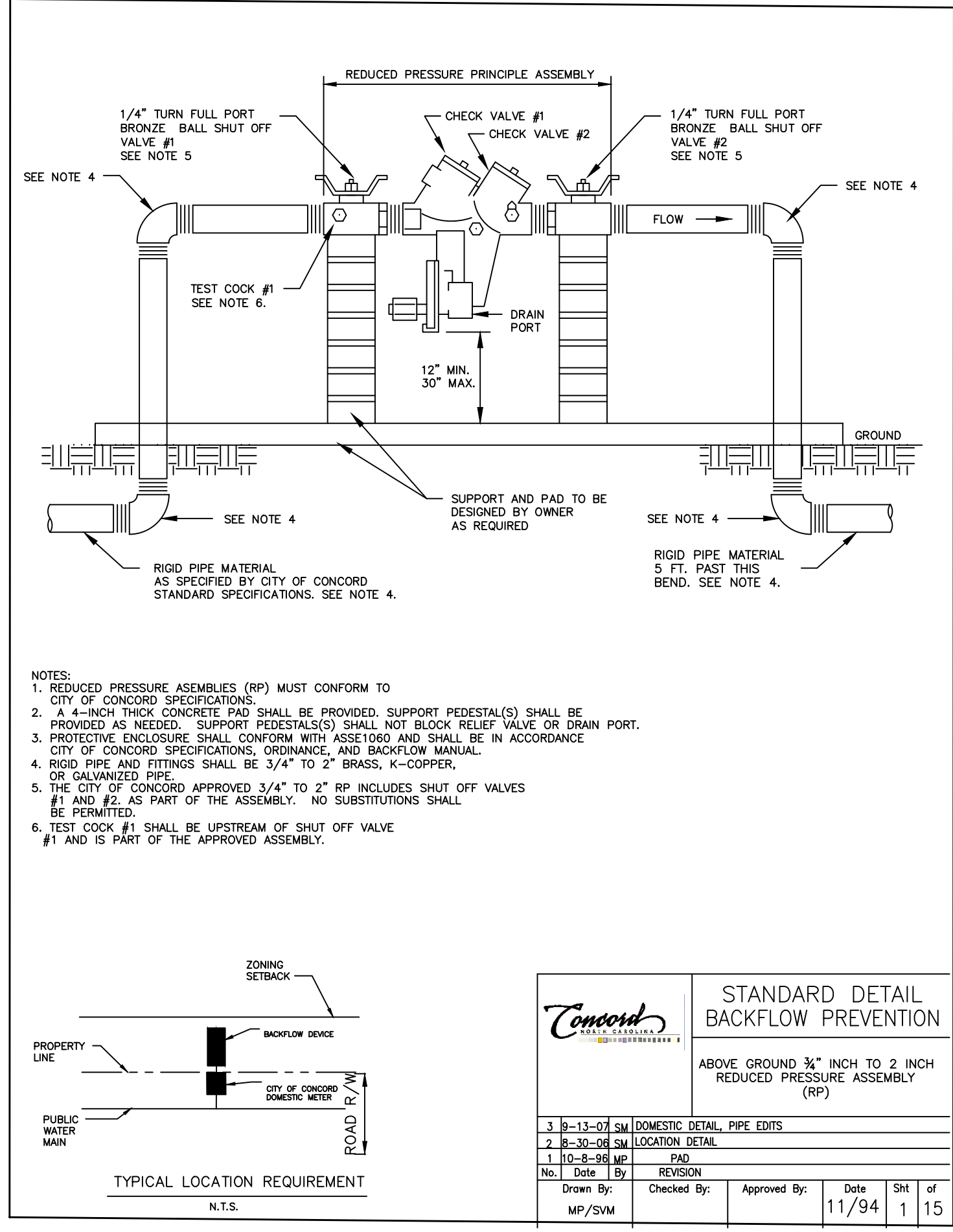
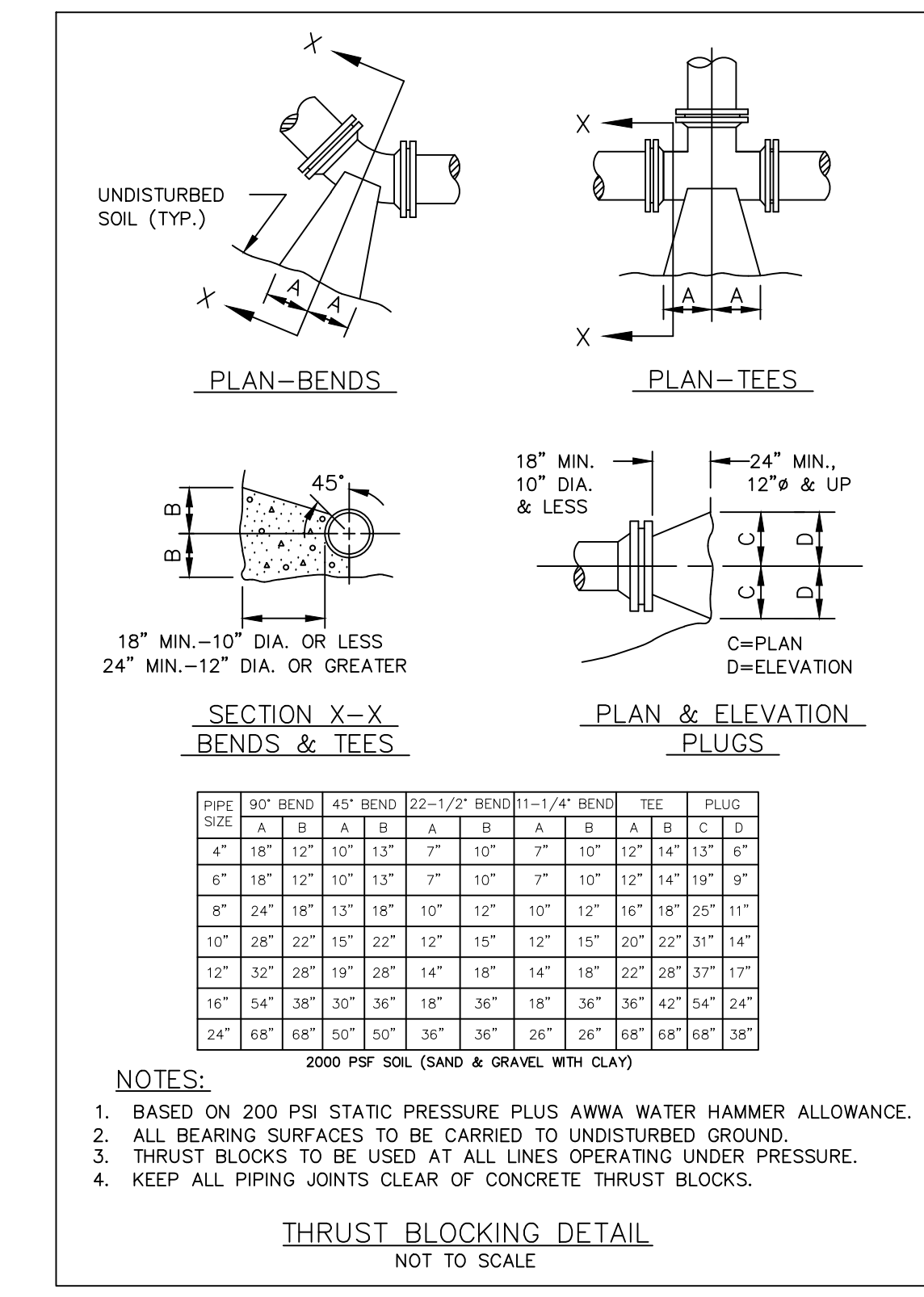
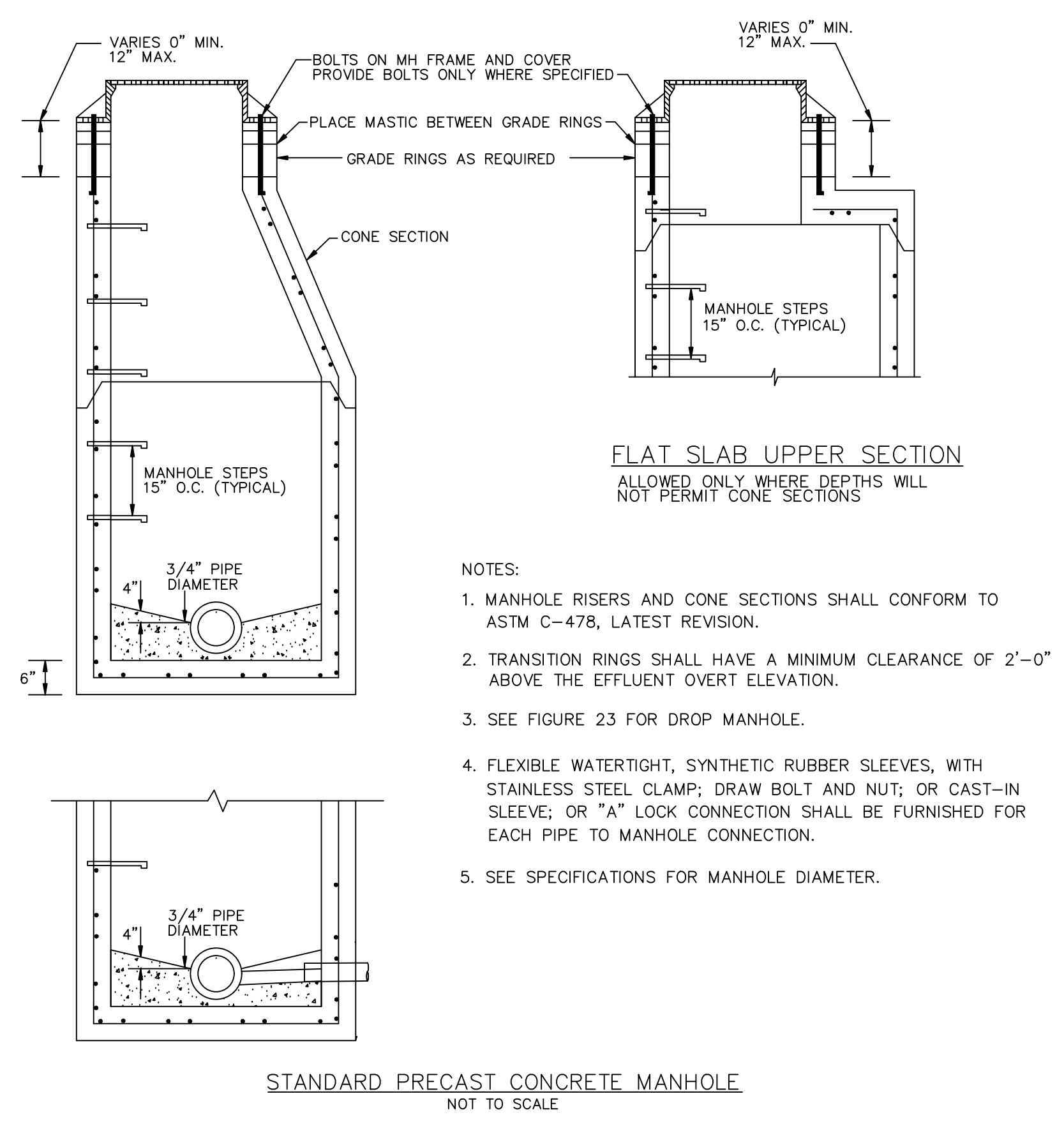
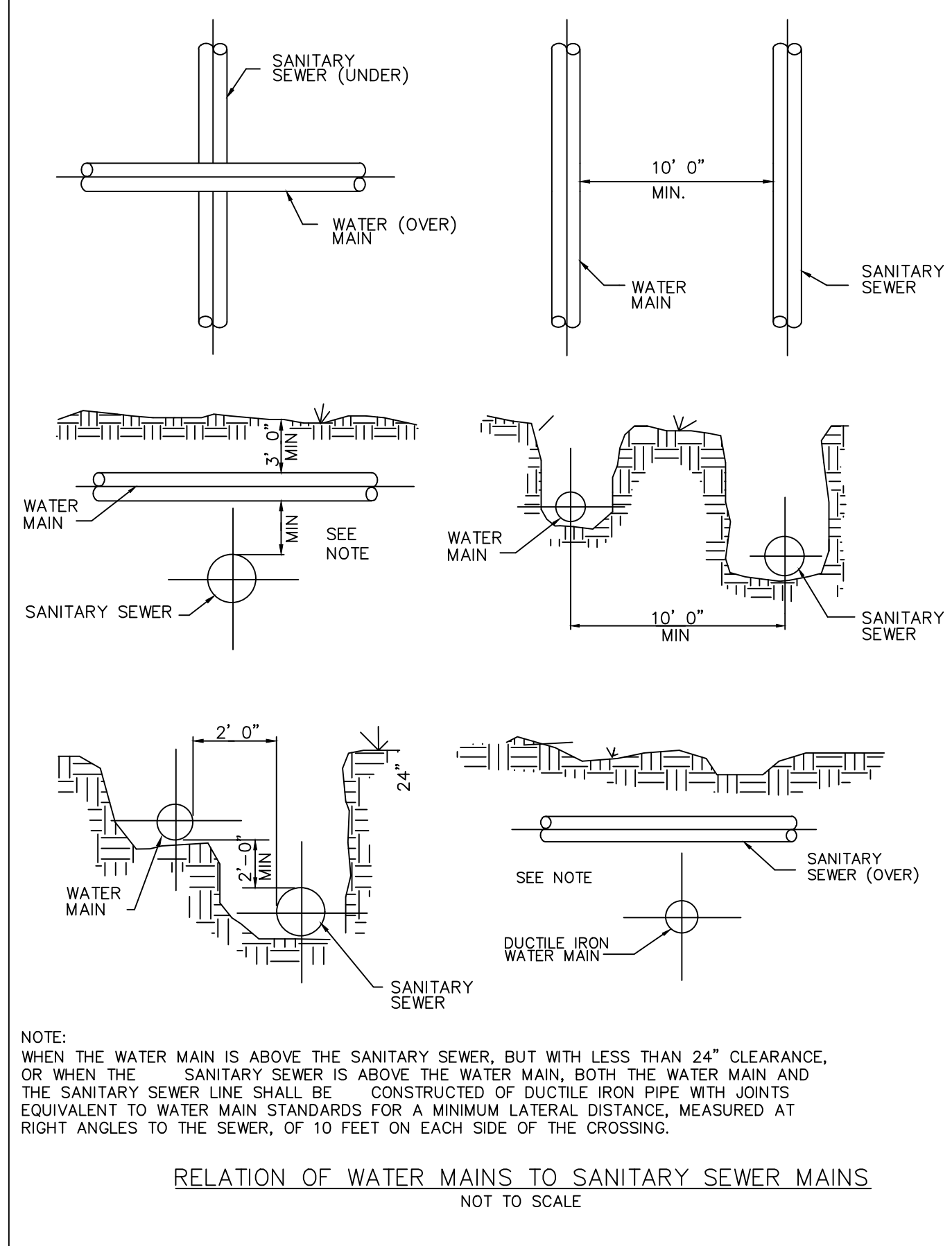


PREPARED BY
ENGINEERING DEPARTMENT
CITY OF CONCORD
CABARRUS COUNTY
P.O. BOX 308
CONCORD N.C. 28026
(704) 920-5425

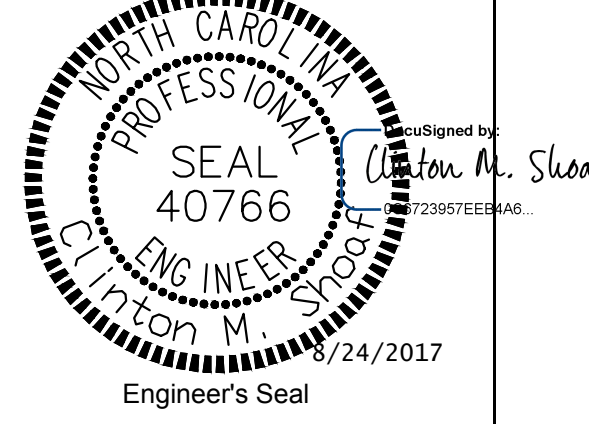



PROJECT REFERENCE NO. U-5806	SHEET NO. UC-3A
DESIGNED BY: CMS DRAWN BY: EES CHECKED BY: CMS APPROVED BY: DATE: 12/08/2016 REVISED:	
 UTILITIES UNIT UTILITIES ENGINEERING SECTION	
1565 MAIL SERVICES CENTER RALEIGH, NC 27699-1555 PHONE (919) 707-6690 FAX (919) 250-4151	

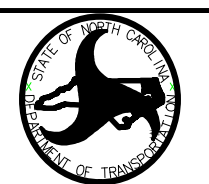
UTILITY CONSTRUCTION
DOCUMENT NOT CONSIDERED FINAL
UNLESS ALL SIGNATURES COMPLETED

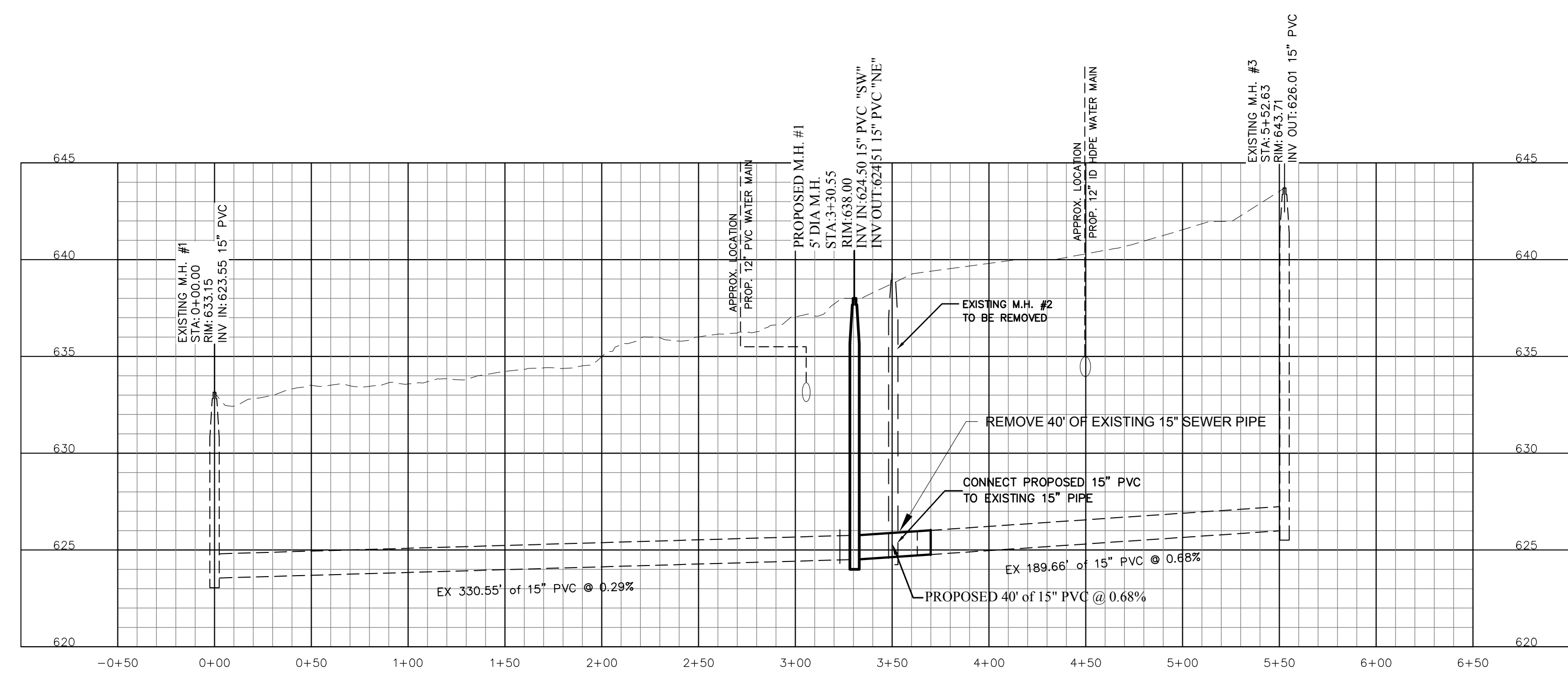


PREPARED BY
ENGINEERING DEPARTMENT
CITY OF CONCORD
CABARRUS COUNTY
P.O. BOX 308
CONCORD, N.C. 28026
(704) 920-5425

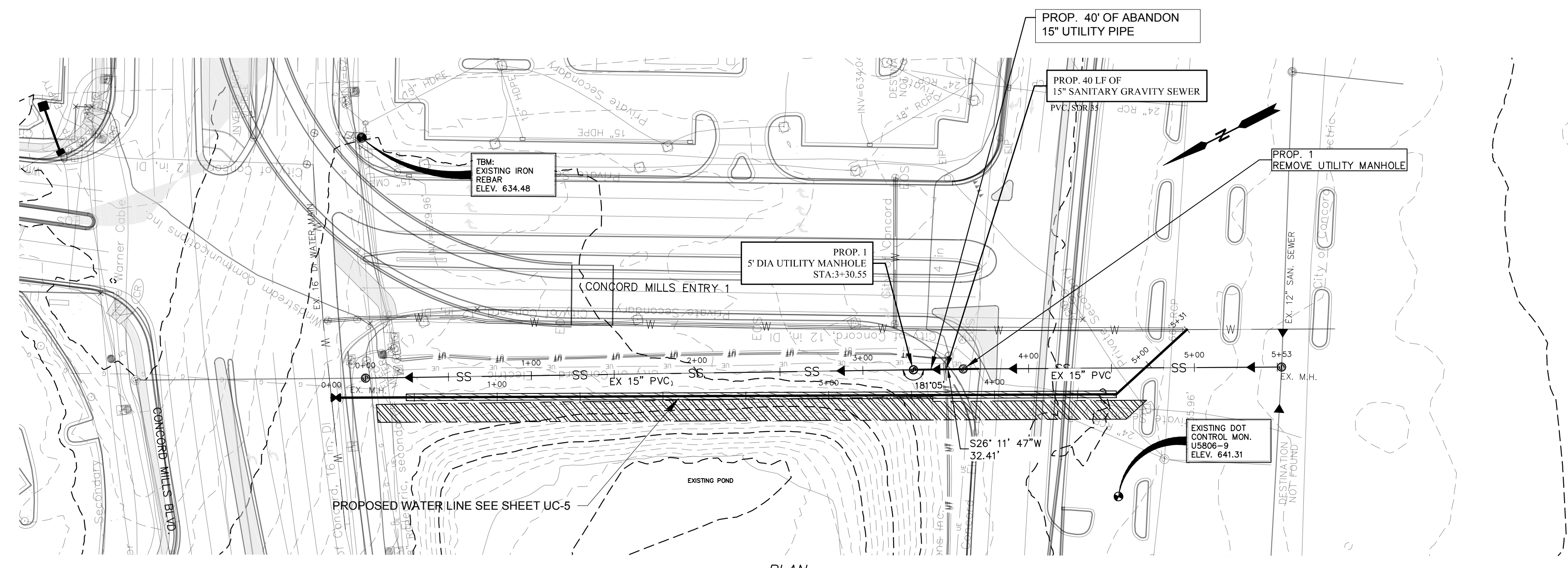


 STANDARD DETAIL BACKFLOW PREVENTION	
ABOVE GROUND 3/4" INCH TO 2 INCH REDUCED PRESSURE ASSEMBLY (RP)	
3 9-13-03 SM DOMESTIC DETAIL, PIPE EDITS 2 8-30-04 SM LOCATION DETAIL 1 10-8-06 MP PAD	REVISION
No. 1 Date 11/94 Drawn By: MP/SVM Checked By: Approved By: MSH Date 10/11 Sht 1 of 15	Date 10/11 Sht 1 of 15

PROJECT REFERENCE NO. U-5806	SHEET NO. UC-4
DESIGNED BY: CMS DRAWN BY: EES CHECKED BY: CMS APPROVED BY: DATE: 12/08/2016 REVISED:	 UTILITIES UNIT UTILITIES ENGINEERING SECTION 1555 MAIL SERVICES CENTER RALEIGH NC 27699-1555 PHONE: (919) 707-6690 FAX (919) 250-4151
UTILITY CONSTRUCTION DOCUMENT NOT CONSIDERED FINAL UNLESS ALL SIGNATURES COMPLETED	



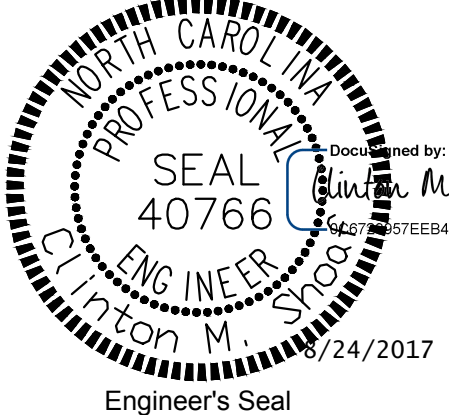
PROFILE
 SCALE: HORZ: 1" = 50'
 VERT: 1" = 5'



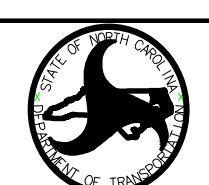
PLAN
 SCALE: 1" = 50'

Concord
 NORTH CAROLINA
 High Performance Living

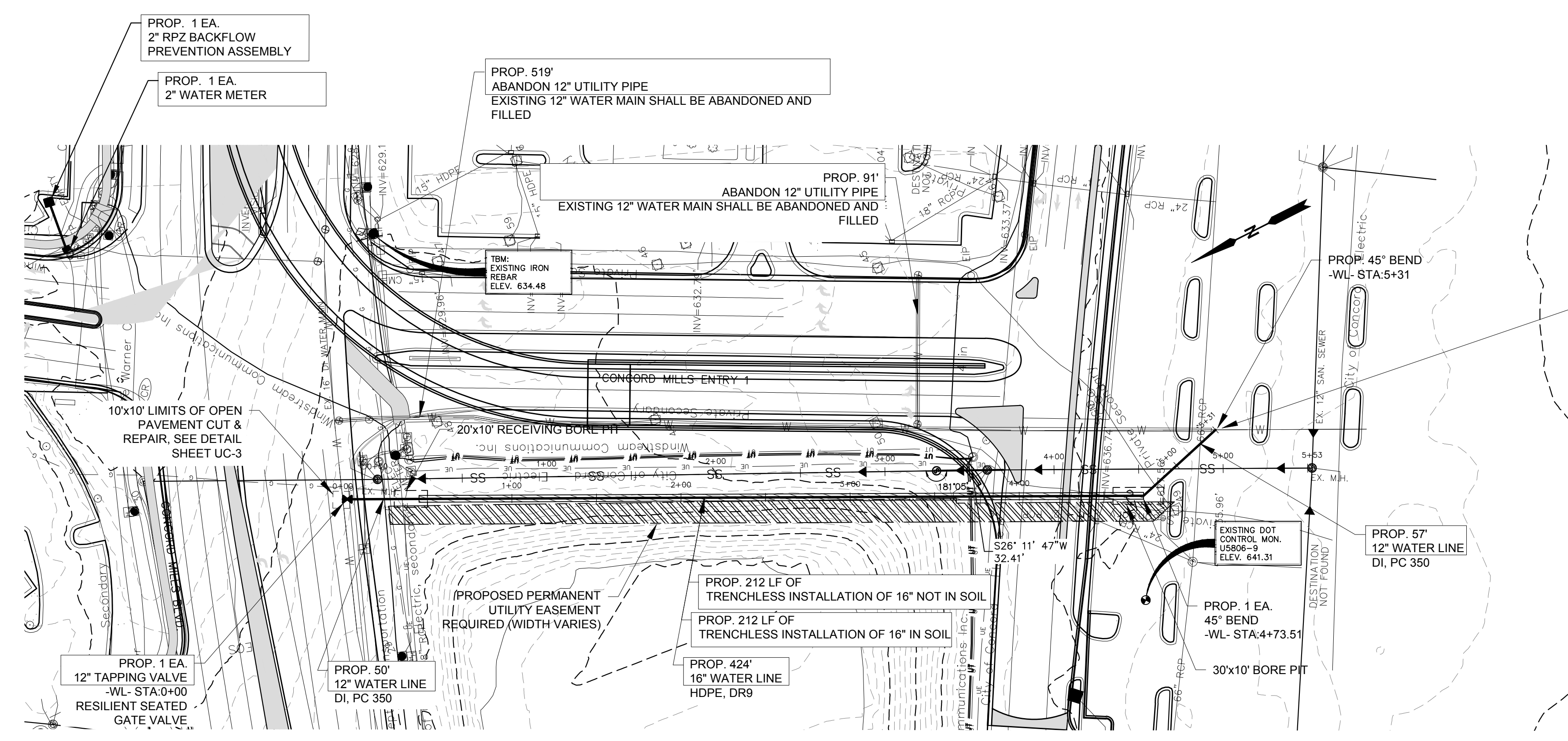
PREPARED BY
 ENGINEERING DEPARTMENT
 CITY OF CONCORD
 CABARRUS COUNTY
 P.O. BOX 308
 CONCORD N.C. 28026
 (704) 920-5425


 SEAL 40766
 ENGINEER
 Clinton M. Steeb
 12/24/2017
 Engineer's Seal

G:\Engineering\Projects\2016\2016-08-08 Concord Mills Plant\Drawings\2016-08-08 UC-4 (REVISED) 2017.dwg Aug 18, 2017 - B. Deam

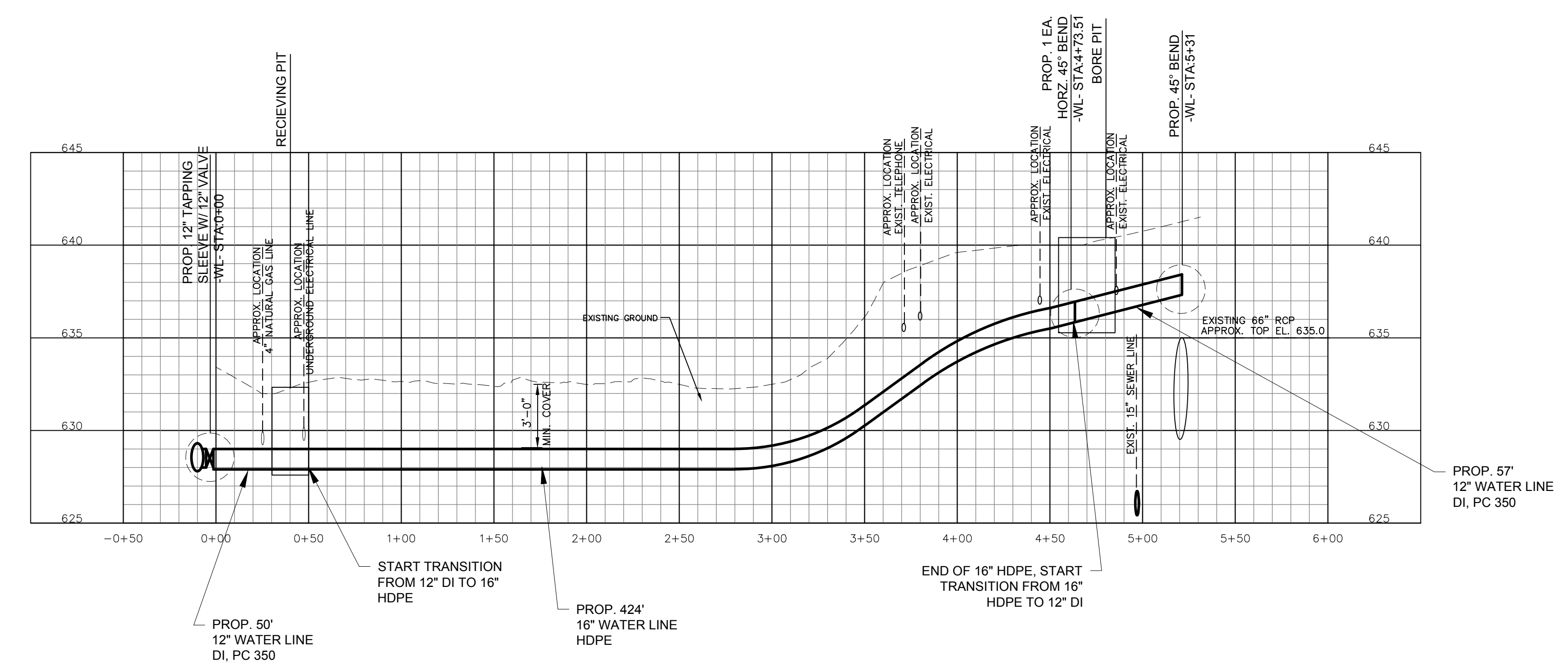
PROJECT REFERENCE NO. U-5806	SHEET NO. UC-5
DESIGNED BY: CMS DRAWN BY: EES CHECKED BY: CMS APPROVED BY: DATE: 12/08/2016 REVISED:	 UTILITIES UNIT UTILITIES ENGINEERING SECTION 1555 MAIL SERVICES CENTER RALEIGH NC 27899-1555 PHONE (919) 707-6690 FAX (919) 250-4151
UTILITY CONSTRUCTION	

DOCUMENT NOT CONSIDERED FINAL
UNLESS ALL SIGNATURES COMPLETED



NOTE:
CONTRACTOR TO COORDINATE CONNECTION WITH CITY OF CONCORD WATER RESOURCES AND FIRE MARSHALL TO ENSURE SERVICE AND FIRE PROTECTION IS MAINTAINED TO MALL

PLAN
SCALE: 1" = 50'



PROFILE
SCALE: HORIZ: 1" = 50'
VERT: 1" = 5'

NOTE:
THE ESTIMATED QUANTITY OF DUCTILE IRON WATER PIPE FITTINGS ON THIS PLAN SHEET IS 1185 POUNDS. THE ACTUAL QUANTITY AND TYPE OF FITTINGS WILL VARY BASED ON FIELD CONDITIONS



PREPARED BY
ENGINEERING DEPARTMENT
CITY OF CONCORD
CABARRUS COUNTY
P.O. BOX 308
CONCORD N.C. 28026
(704) 920-5425

