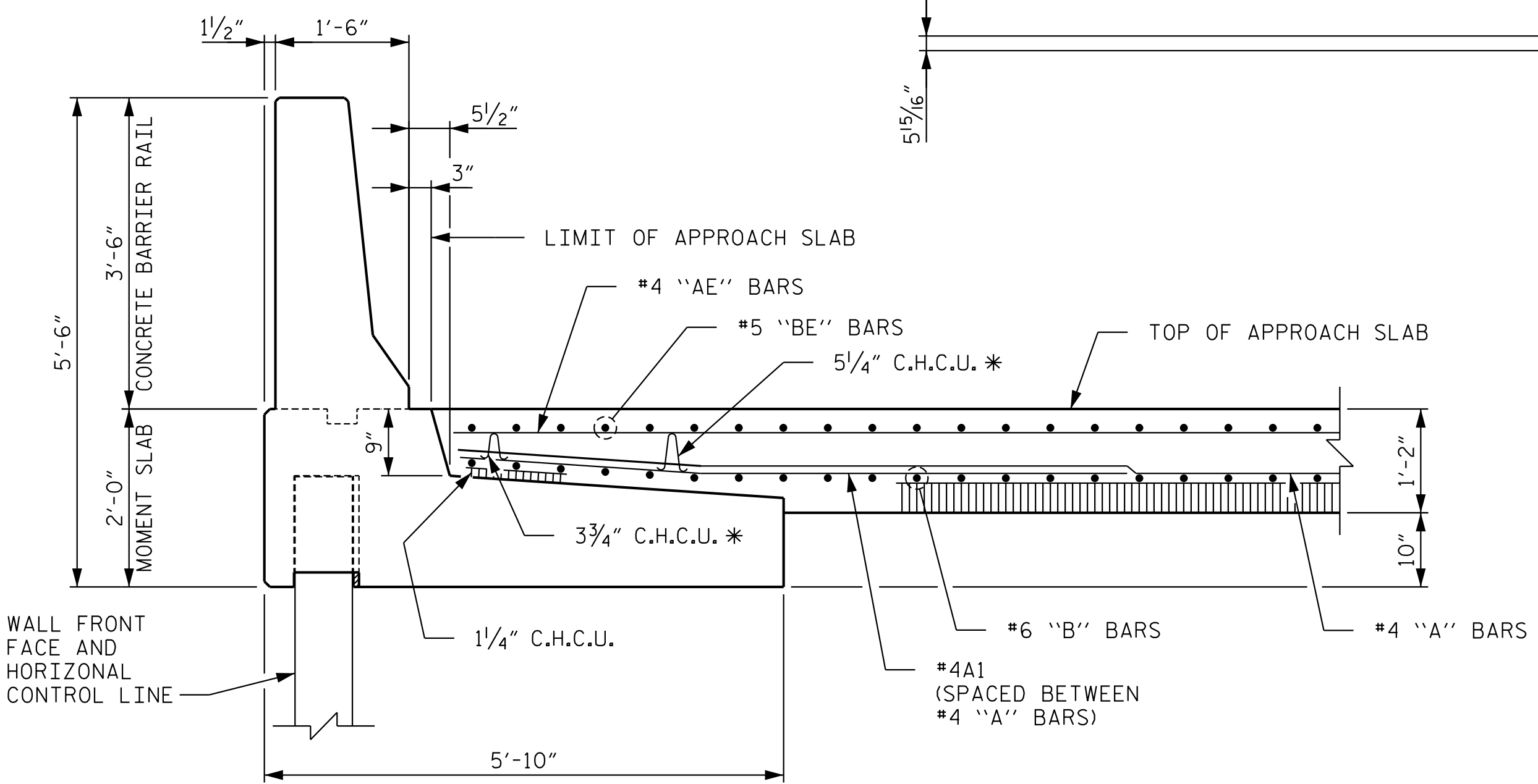
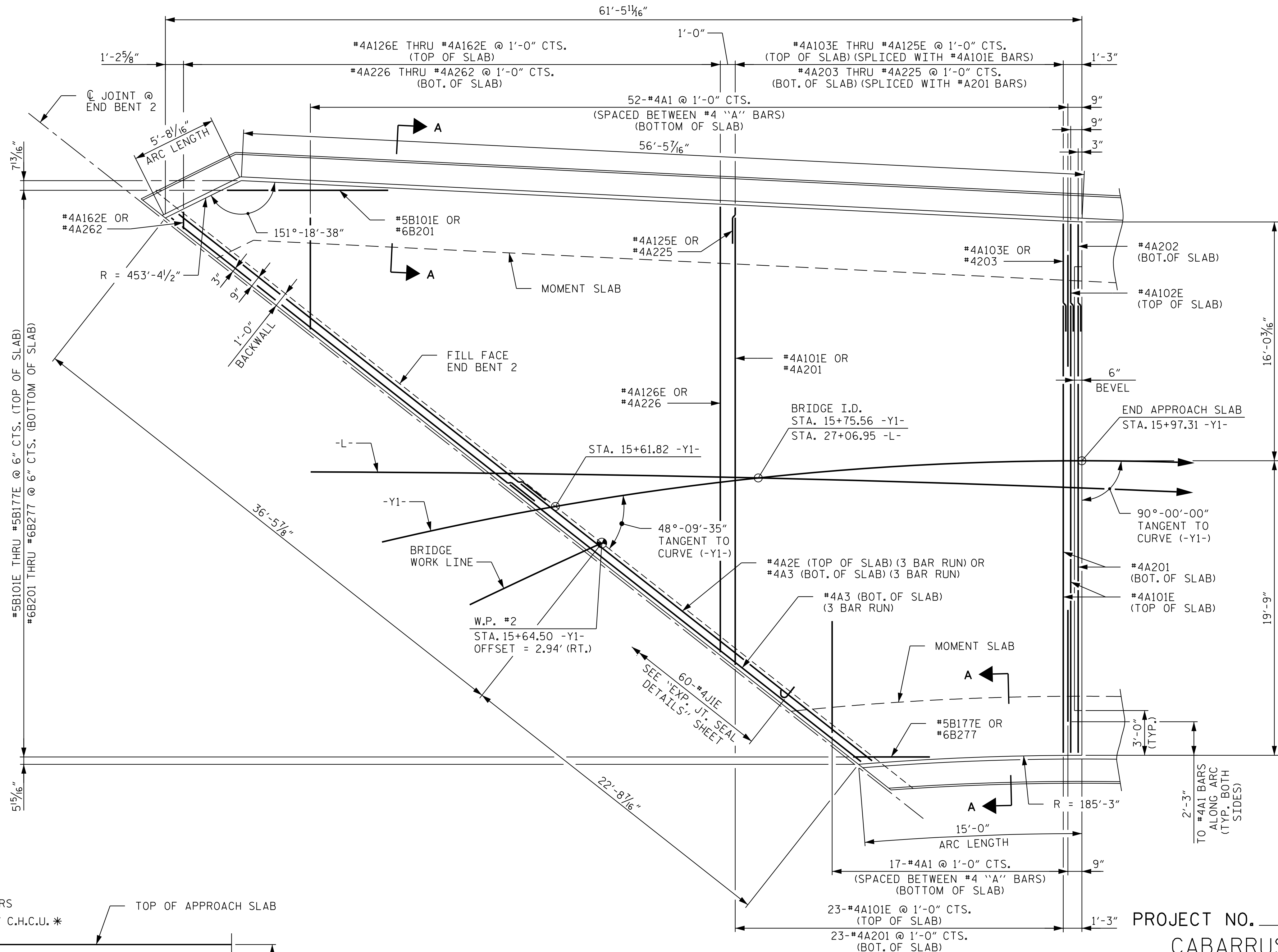


NOTES

"A" BARS ARE PARALLEL TO END APPROACH SLAB EDGE.

FOR APPROACH SLAB NOTES SEE "BRIDGE APPROACH SLAB FOR FLEXIBLE PAVEMENT", SHEET 1 OF 5.

THE QUANTITY OF #4JIE BARS ON THE BILL OF MATERIAL IS BASED ON 1'-0" CENTERS. JIE BARS SHALL BE PLACED AT EACH VERTICAL STUD ANCHOR BOLT. IN THE EVENT THAT THE NUMBER OF VERTICAL STUD ANCHORS EXCEEDS THE NUMBER OF JIE BARS SPECIFIED, ADDITIONAL JIE BARS WILL NOT BE REQUIRED.

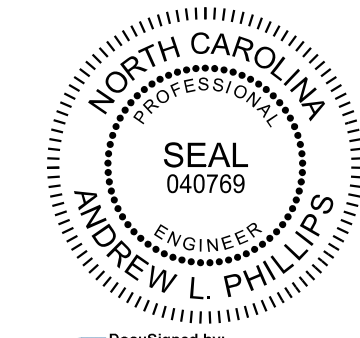


SECTION A-A AT MOMENT SLAB

* SPACE C.H.C.U. AS REQUIRED TO ACHIEVE SPECIFIED REBAR CLEAR COVERS.

PROJECT NO. U-5806
 CABARRUS COUNTY
 STATION: 15+75.56 -Y1-
27+06.95 -L-

SHEET 4 OF 5



Designed by: Seth A. Denney
 10/23/2017

Designed by: Andrew L. Phillips
 10/23/2017

Kimley»Horn
 421 Fayetteville Street, Suite 600
 Raleigh, NC 27601-1772
 Phone (919) 677-2000

STATE OF NORTH CAROLINA
 DEPARTMENT OF TRANSPORTATION
 RALEIGH

BRIDGE APPROACH SLAB FOR FLEXIBLE PAVEMENT

REVISIONS						SHEET NO.
NO.	BY:	DATE:	NO.	BY:	DATE:	S-46
1			3			TOTAL SHEETS
2			4			50

DOCUMENT NOT CONSIDERED FINAL UNLESS ALL SIGNATURES COMPLETED

This document, together with the concepts and designs presented herein, is an integral part of the project. It is not to be used for any other project without written authorization and approval by Kimley-Horn and Associates, Inc. shall be without liability to Kimley-Horn and Associates, Inc.

10/23/2017 K:\BIDI_Structures\Bridges\AK\01036388 - U-5806 Final Design\Cad\Drawn\046_U-5806_4504.dgn