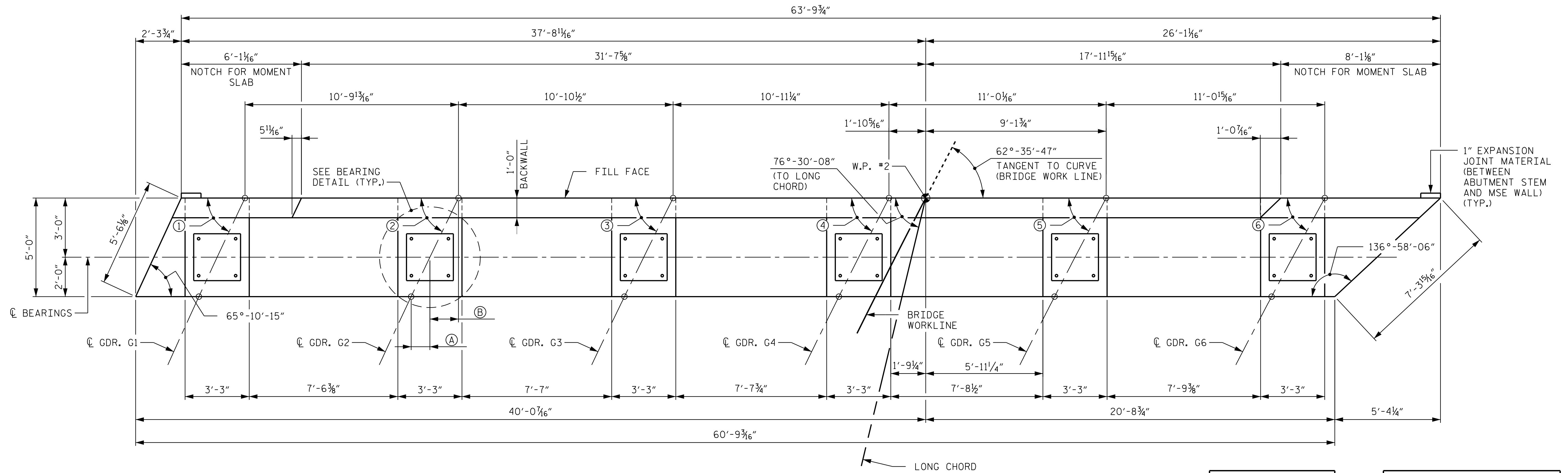


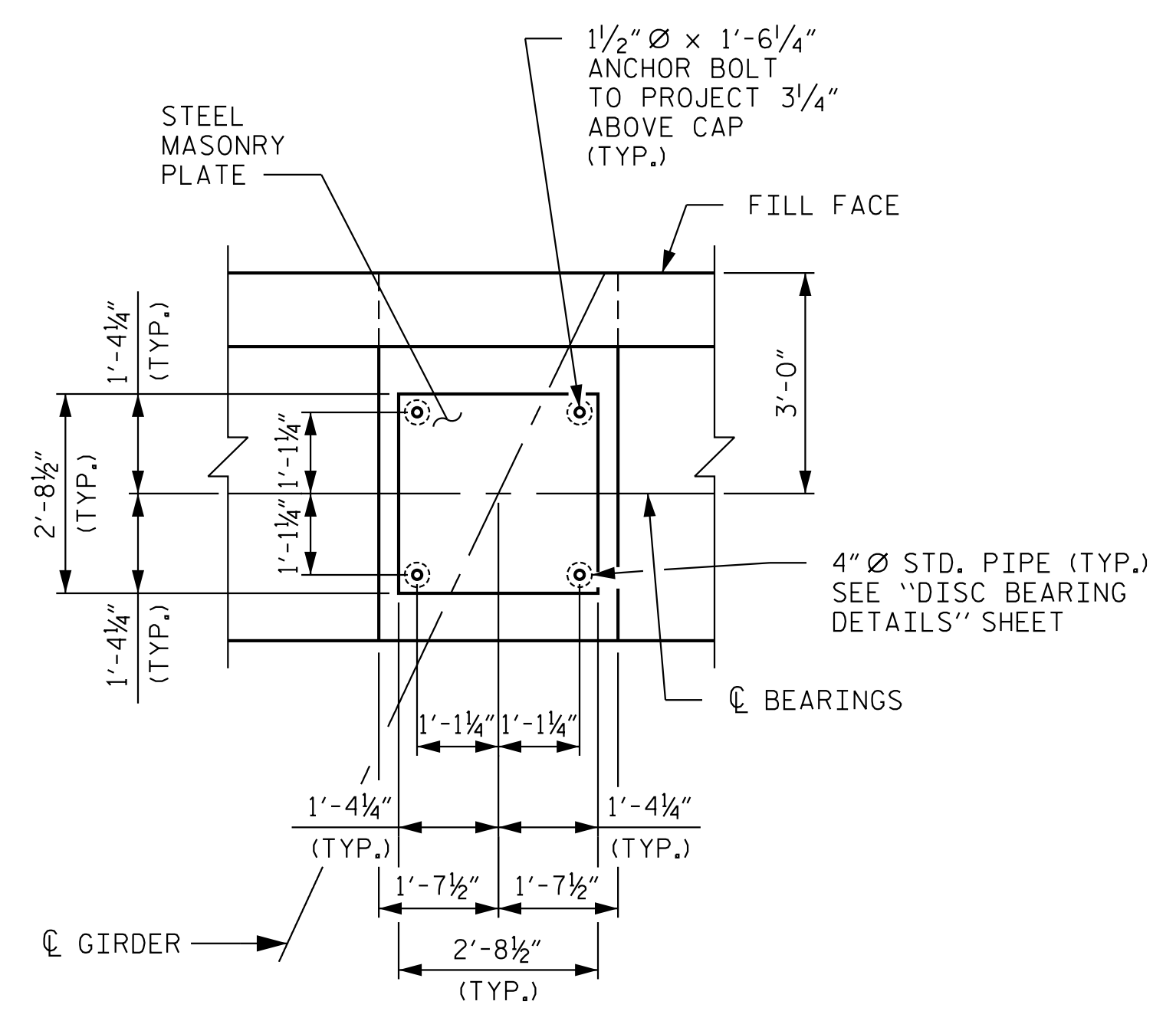
NOTE:
FOR END BENT NOTES, SEE "END BENT 2"
SHEET 5 OF 5.



PLAN
-Y1- NOT SHOWN FOR CLARITY.
SEE GENERAL DRAWING SHEETS
FOR -Y1- AND BRIDGE WORK LINE
INTERACTION.

GIRDER ANGLES	
ALL ANGLES ARE TANGENT TO CURVE	
①	64°-36'-34"
②	64°-00'-30"
③	63°-22'-37"
④	62°-42'-45"
⑤	62°-00'-45"
⑥	61°-16'-26"

BEARING DIMENSIONS	
G1	(A) 11 1/8" (B) 1'-4 15/16"
G2	(A) 11 3/8" (B) 1'-5 3/8"
G3	(A) 11 3/4" (B) 1'-5 7/8"
G4	(A) 1'-0 1/16" (B) 1'-6 3/8"
G5	(A) 1'-0 7/16" (B) 1'-6 15/16"
G6	(A) 1'-0 13/16" (B) 1'-7 1/16"



BEARING DETAIL

PROJECT NO. U-5806
CABARRUS COUNTY
STATION: 15+75.56 -Y1-
27+06.95 -L-
SHEET 1 OF 5

STATE OF NORTH CAROLINA
DEPARTMENT OF TRANSPORTATION
RALEIGH

**SUBSTRUCTURE
END BENT 2**

DRAWN BY: <u>D. D. LOWERY</u>	DATE: <u>10/17</u>
CHECKED BY: <u>A. L. PHILLIPS</u>	DATE: <u>10/17</u>
DESIGN ENGINEER OF RECORD: <u>S. A. DENNEY</u>	DATE: <u>10/17</u>

**DOCUMENT NOT CONSIDERED FINAL
UNLESS ALL SIGNATURES COMPLETED**

Kimley»Horn
421 Fayetteville Street, Suite 600
Raleigh, NC 27601-1772
Phone (919) 677-2000
NC LICENSE # F-0102

REVISIONS						SHEET NO. S-38
NO.	BY:	DATE:	NO.	BY:	DATE:	
1			3			TOTAL SHEETS 50
2			4			

10/23/2017 K:\BIDI_Structures\Bridges\N\101036388 - U-5806 Final Design\Cad\Drawn\03B_U-5806_EB201.dgn