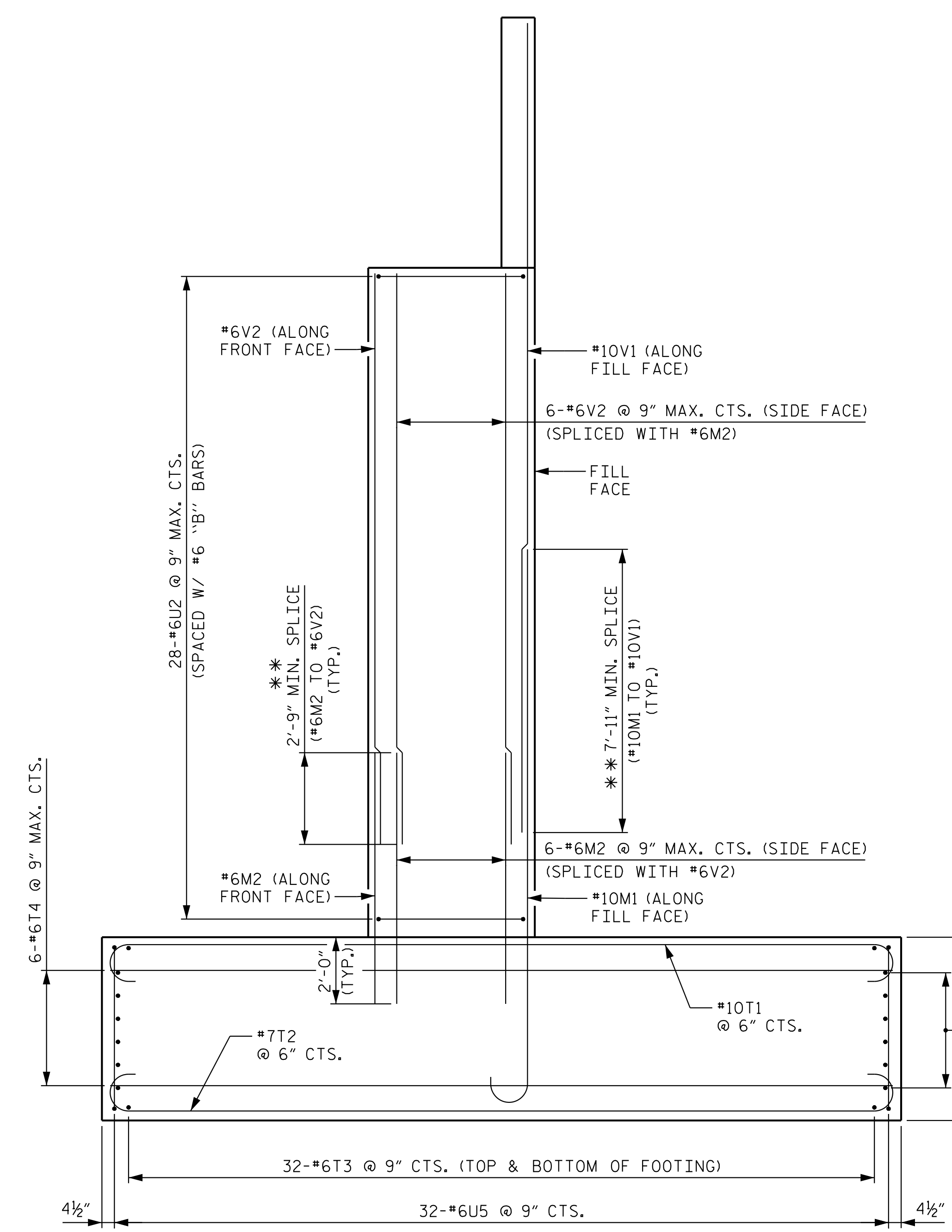
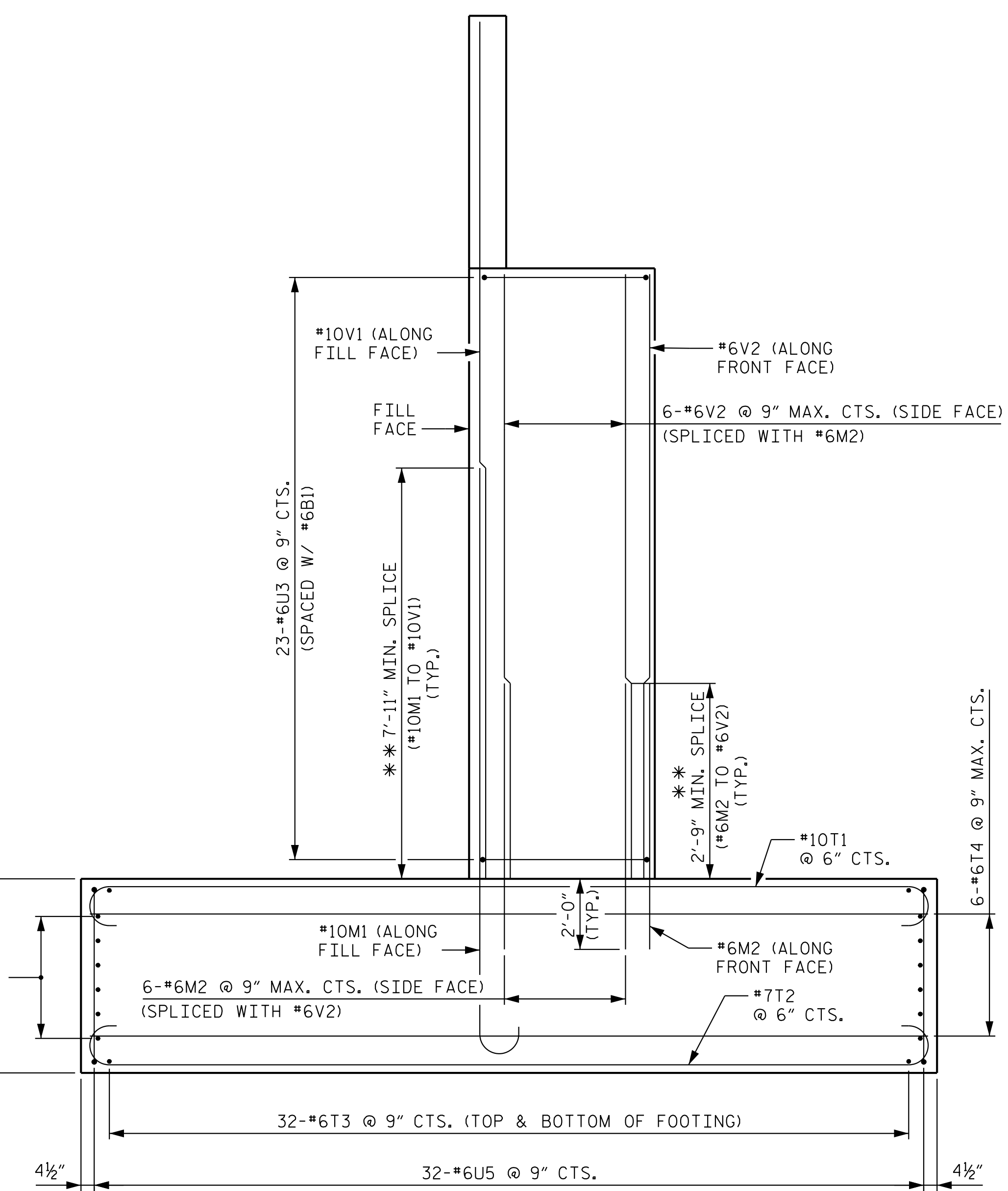


NOTE:
 FOR END BENT NOTES, SEE "END BENT 1"
 SHEET 5 OF 5.
 FOR NOTE **, SEE "END BENT 1"
 SHEET 5 OF 5.

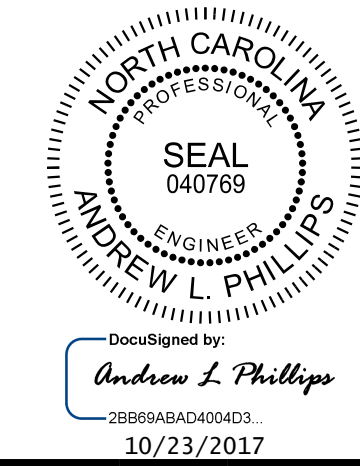
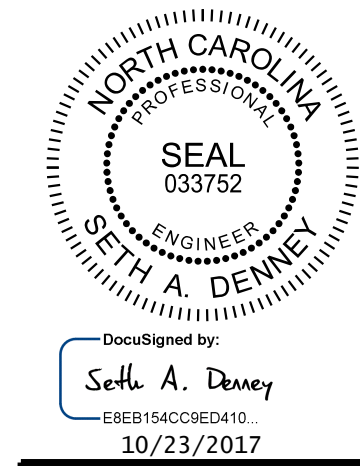


VIEW X-X



VIEW Y-Y

PROJECT NO. U-5806
CABARRUS COUNTY
 STATION: 15+75.56 -Y1-
27+06.95 -L-
 SHEET 3 OF 5



Kimley»Horn
 421 Fayetteville Street, Suite 600
 Raleigh, NC 27601-1772
 Phone (919) 677-2000
 NC LICENSE # F-0102

STATE OF NORTH CAROLINA
 DEPARTMENT OF TRANSPORTATION
 RALEIGH
 SUBSTRUCTURE
 END BENT 1

REVISIONS						SHEET NO.
NO.	BY:	DATE:	NO.	BY:	DATE:	S-35
1			3			TOTAL SHEETS
2			4			50

DRAWN BY: D. D. LOWERY DATE: 10/17
 CHECKED BY: A. L. PHILLIPS DATE: 10/17
 DESIGN ENGINEER OF RECORD: S. A. DENNEY DATE: 10/17

**DOCUMENT NOT CONSIDERED FINAL
 UNLESS ALL SIGNATURES COMPLETED**

This document, together with the concepts and designs presented herein, is an integral part of the project. It is intended only for the specific project and site and without authorization and approval by Kimley-Horn and Associates, Inc. shall be without liability to Kimley-Horn and Associates, Inc.
 Copyright Kimley-Horn and Associates, Inc., 2017

10/23/2017 K:\BIDI_Structures\Bridges\AK\101035388 - U-5806 Final Design\Cad\Drawings\U-5806_EB103.dgn