

**NOTES**

THE CONTRACTOR SHALL BE RESPONSIBLE FOR DETERMINING THE TOTAL QUANTITY OF CONDUIT NEEDED TO COMPLETE THE WORK AND THAT THE CONDUIT(S) ARE PLACED AT THE NOTED DIMENSION AND ABOVE THE BOTTOM OF THE GIRDER.

THE INSTALLATION OF THE CONDUIT SYSTEM SHALL BE PAID FOR AS LUMP SUM. THE PRICE SHALL INCLUDE ALL CONDUIT, HANGERS, STABILIZERS, EXPANSION JOINTS, CONCRETE INSERTS, PVC SLEEVES AND ALL NECESSARY HARDWARE TO COMPLETE THE WORK.

THE CONTRACTOR SHALL FIELD VERIFY THAT THE CONDUIT SYSTEM IS NOT IN CONFLICT WITH THE GUARDRAIL POSTS.

SEE DETAIL "C" FOR HANGER ASSEMBLY INSTALLATION.

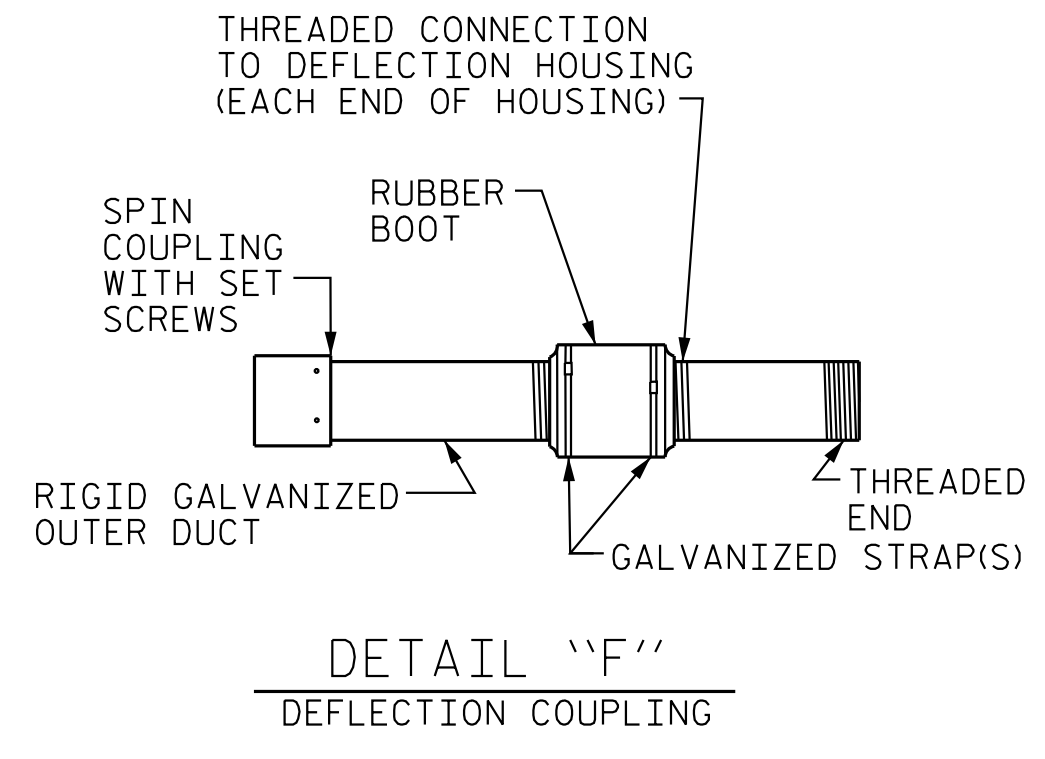
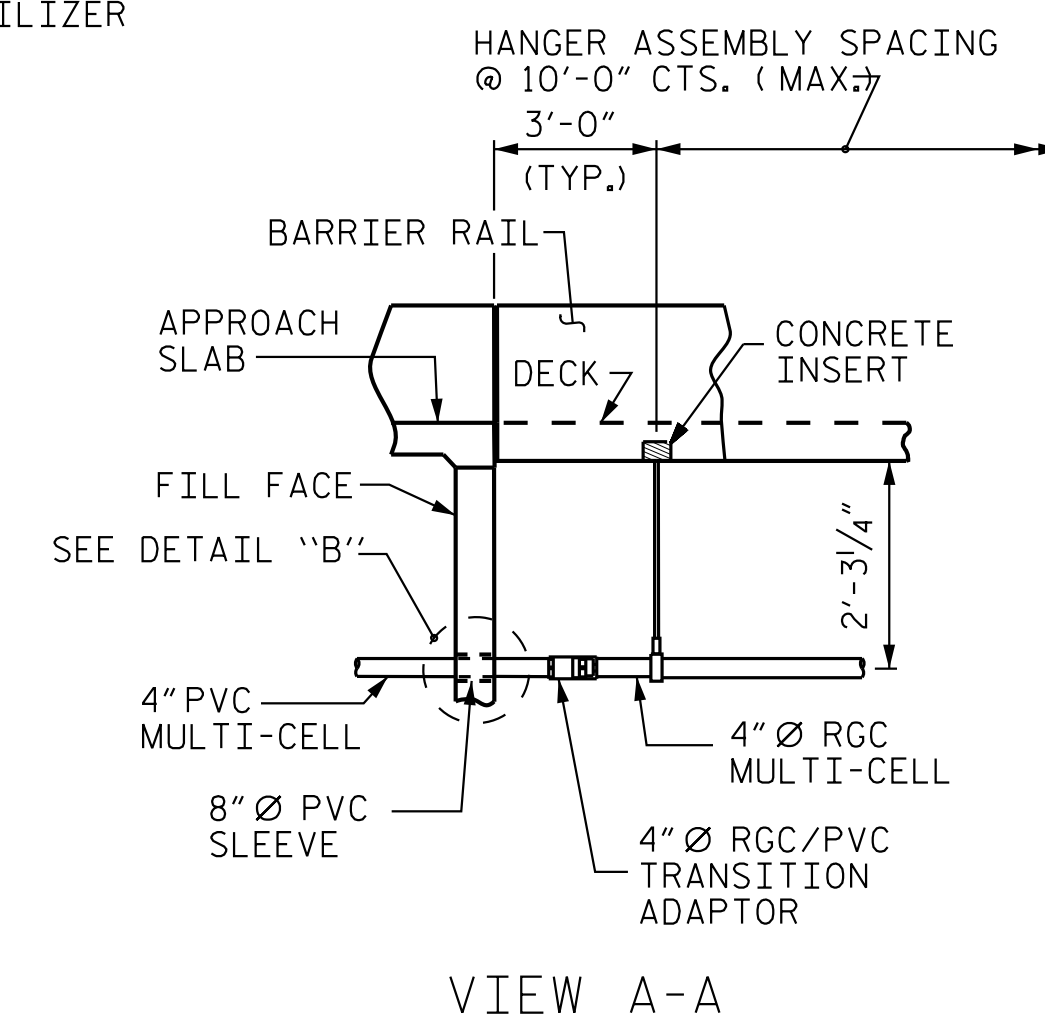
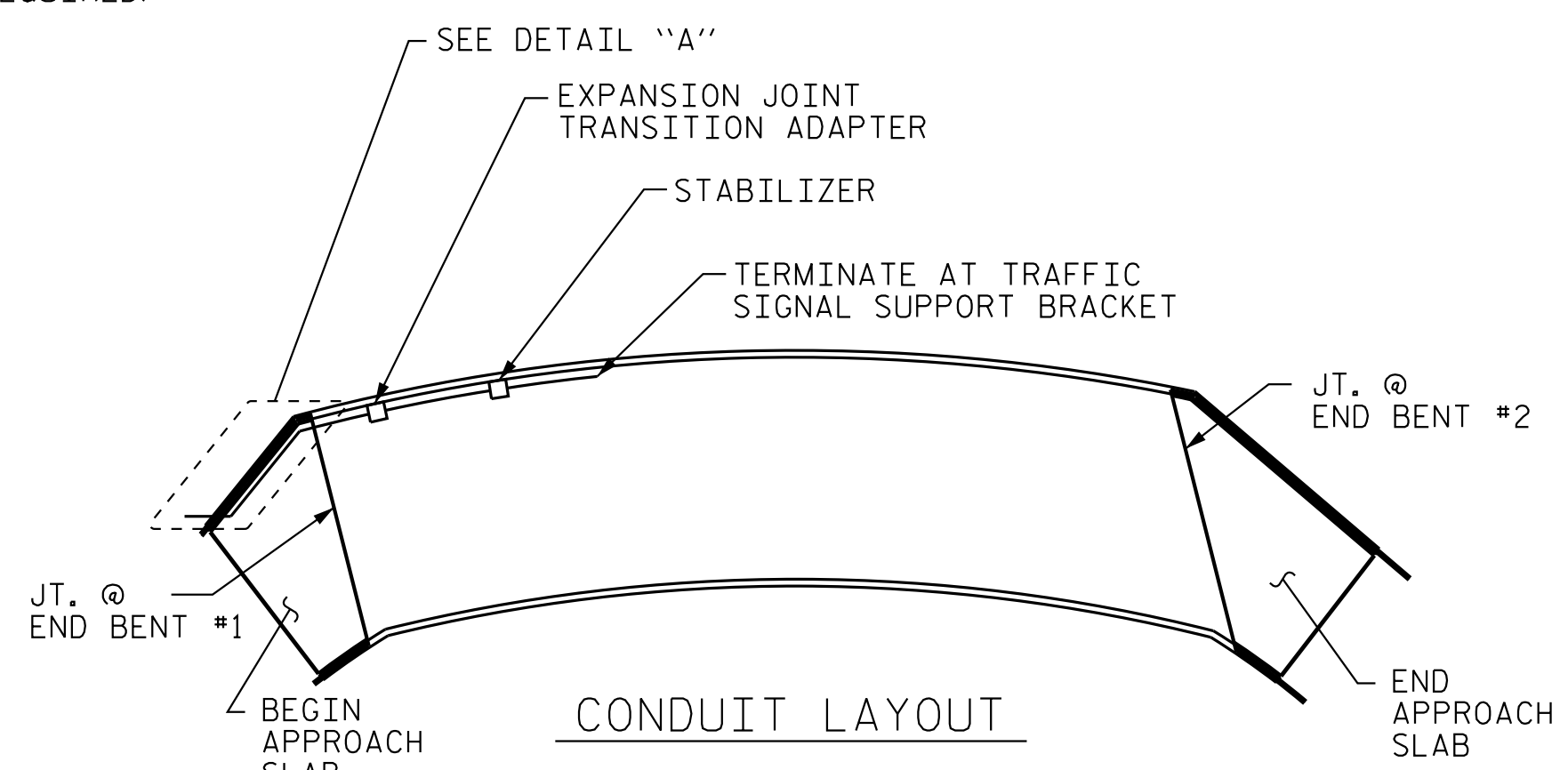
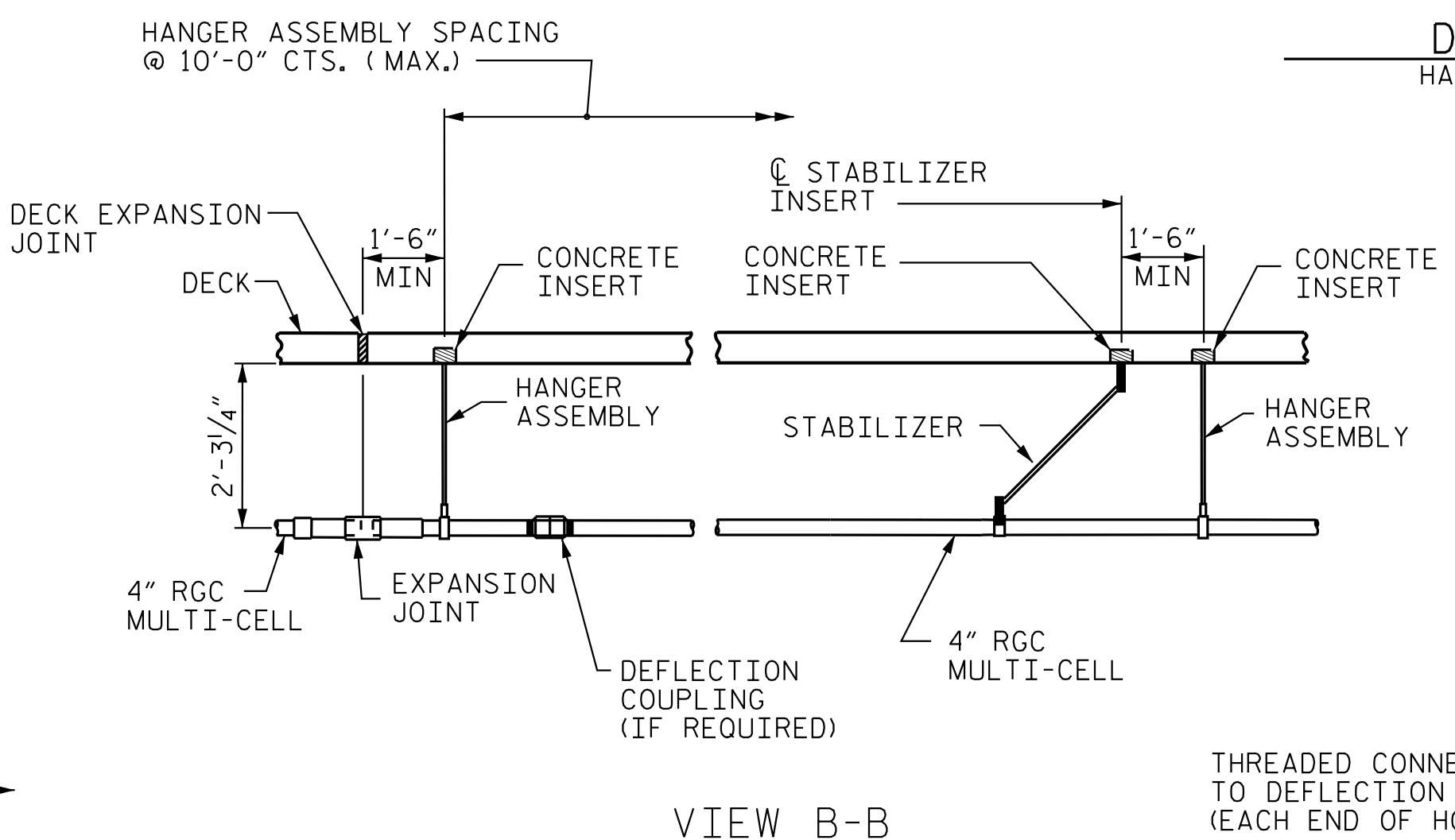
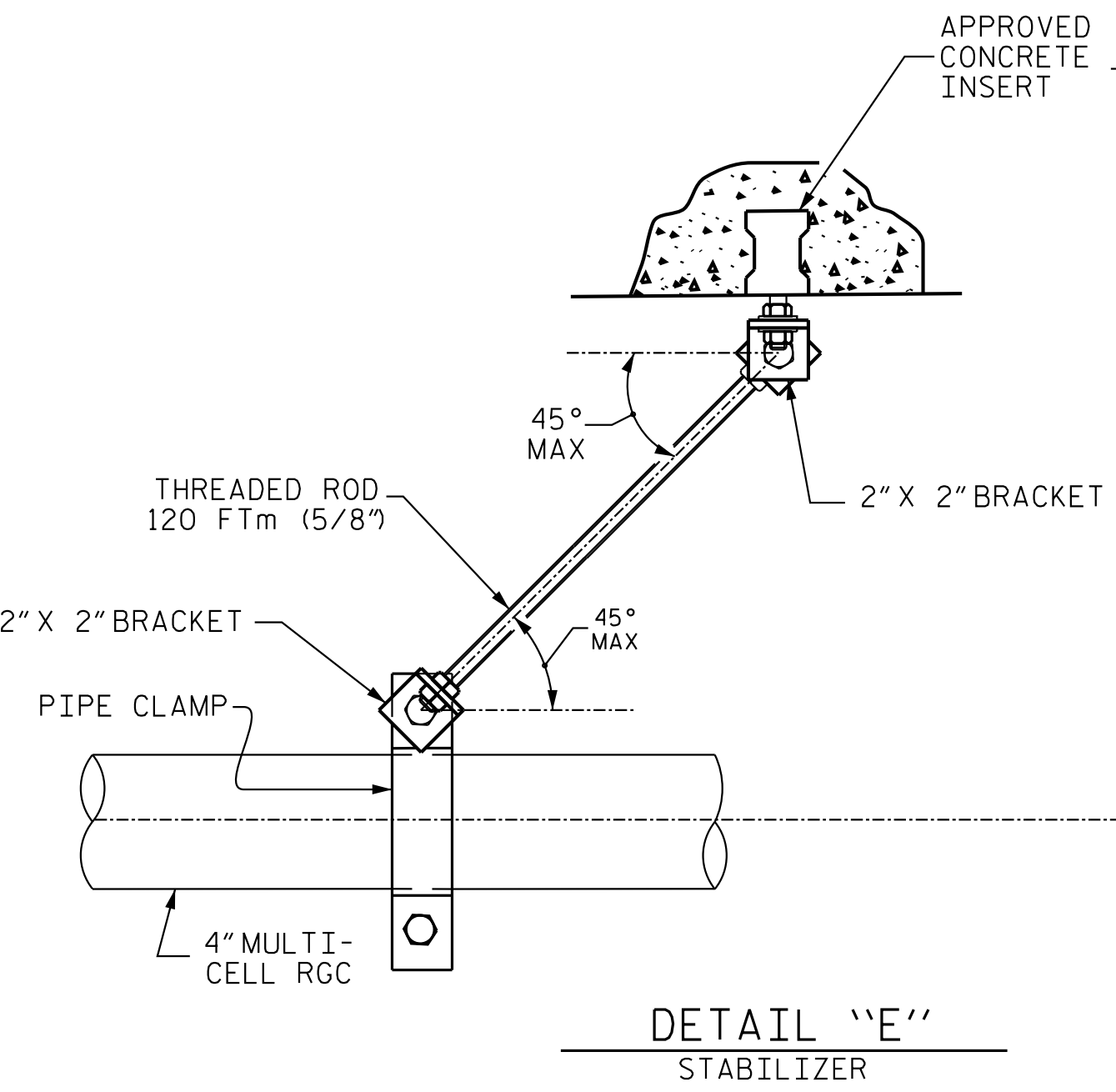
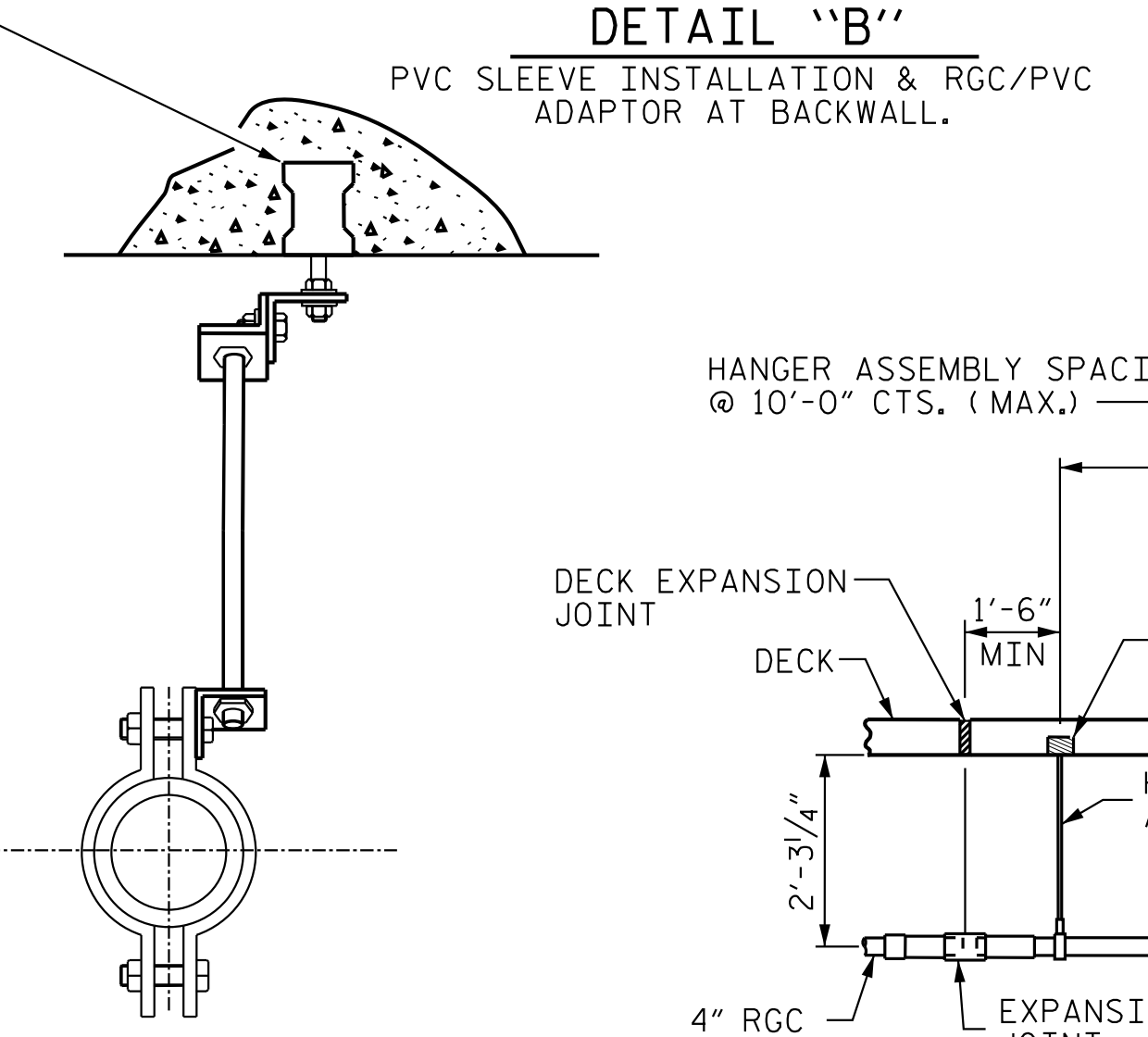
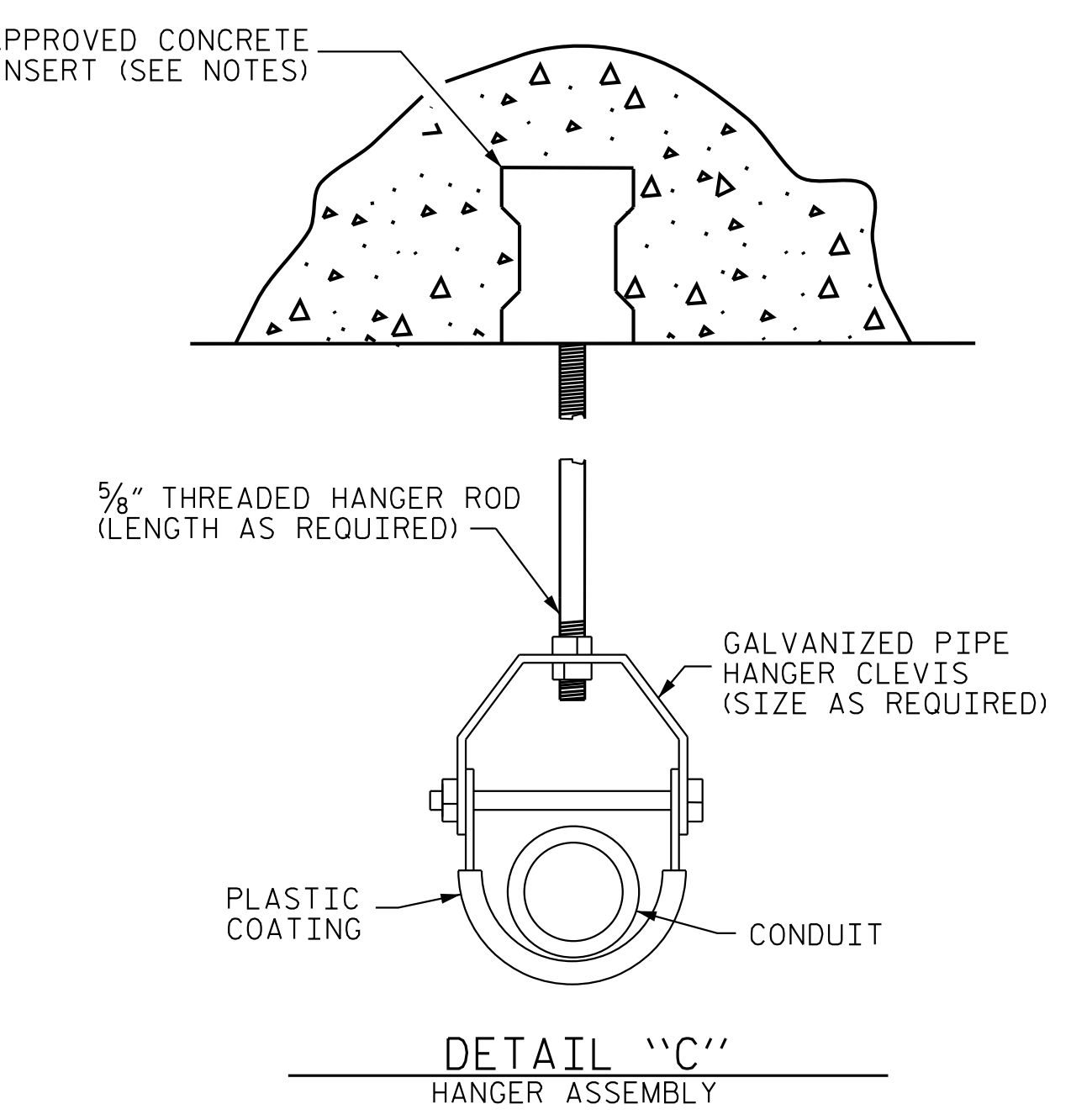
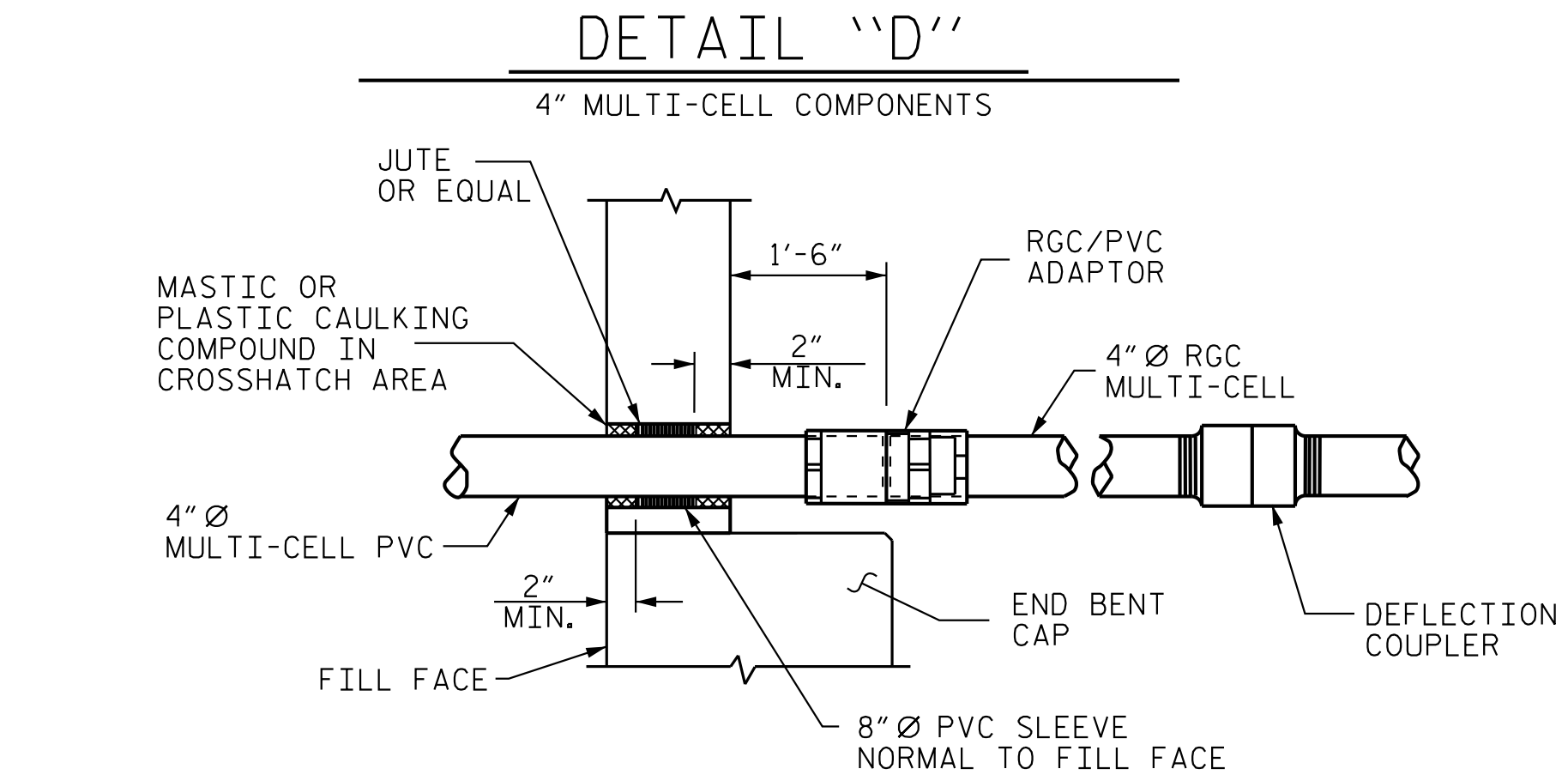
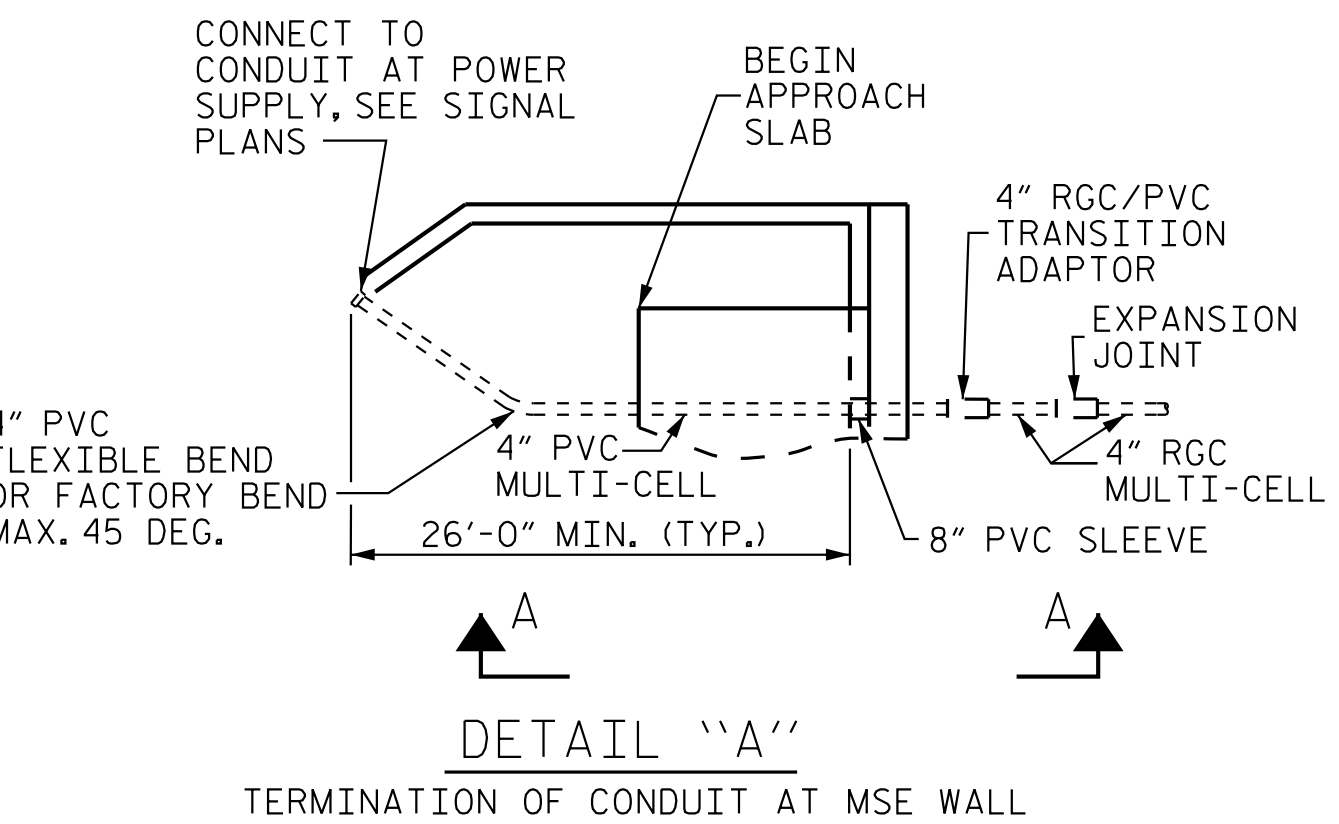
INSTALL SLEEVES PARALLEL TO GIRDERS. SEE DETAIL "B" FOR SLEEVE INSTALLATION.

PROVIDE TRANSITION ADAPTOR (AND EXPANSION JOINT) FOR CONDUIT AT END BENT 1.

INSTALL STABILIZERS MIDWAY BETWEEN DECK EXPANSION JOINTS. STABILIZER CAN NOT BE USED INSTEAD OF A HANGER ASSEMBLY.

THE CONCRETE SCREW INSERT SHALL HAVE A ROD SIZE OF 5/8" AND A PULL FORCE OF 1260 lbs.

FOR ELECTRICAL CONDUIT SYSTEM FOR SIGNALS, SEE SPECIAL PROVISIONS.



**ELECTRIC CONDUIT DETAILS**

PROJECT NO. U-5806  
CABARRUS COUNTY  
 STATION: 15+75.56 -Y1-  
27+06.95 -L-

**NORTH CAROLINA PROFESSIONAL SEAL**  
 ENGINEER  
 SETH A. DENNEY  
 033752  
 10/23/2017

**NORTH CAROLINA PROFESSIONAL SEAL**  
 ENGINEER  
 ANDREW L. PHILLIPS  
 040769  
 10/23/2017

STATE OF NORTH CAROLINA  
 DEPARTMENT OF TRANSPORTATION  
 RALEIGH  
 STANDARD  
**ELECTRICAL CONDUIT SYSTEM FOR SIGNALS**

REVISIONS						SHEET NO.
NO.	BY:	DATE:	NO.	BY:	DATE:	S-30
1			3			TOTAL SHEETS
2			4			50

**Kimley-Horn**  
 421 Fayetteville Street, Suite 600  
 Raleigh, NC 27601-1772  
 Phone (919) 677-2000  
 NC LICENSE # F-0102

**DOCUMENT NOT CONSIDERED FINAL UNLESS ALL SIGNATURES COMPLETED**

10/23/2017 K:\BIDI\_Structures\Bridges\N.C.01036388 - U-5806 - Final Design\Cad\Drawn\030\_U-5806\_ECS01.dgn

ASSEMBLED BY : D.D. LOWERY DATE : 10/17  
 CHECKED BY : A.L. PHILLIPS DATE : 10/17  
 DRAWN BY : RWW 2-4-03 REV. 5/1/06 TLA/GM  
 CHECKED BY : DBM 2-4-03 REV. 10/1/11 MAA/GM