

NOTES

LATERAL BRACING ASSEMBLY SHALL COMPLY WITH SECTION 1072 OF THE STANDARD SPECIFICATIONS.

ALL STRUCTURAL STEEL SHALL BE AASHTO M270 GRADE 50W OR APPROVED EQUAL.

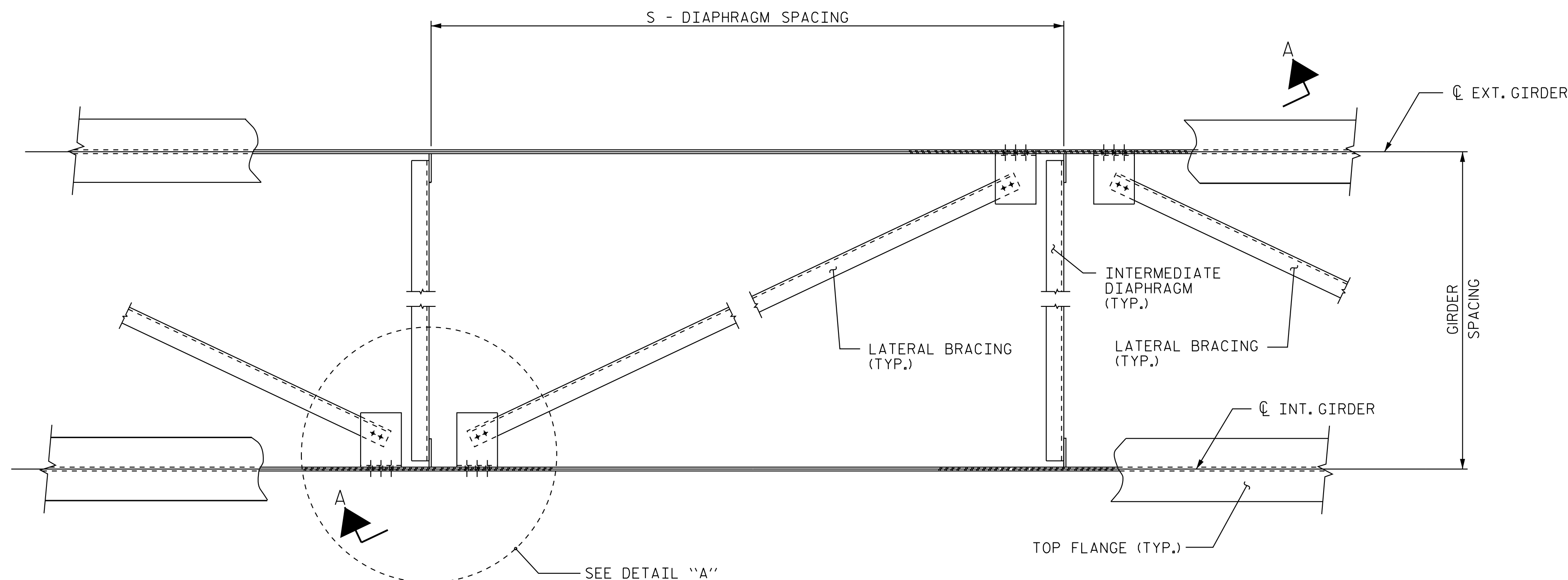
TENSION ON THE ASTM A325 BOLTS SHALL BE CALIBRATED USING DIRECT TENSION INDICATOR WASHERS IN ACCORDANCE WITH THE STANDARD SPECIFICATIONS.

ALL BOLTED CONNECTIONS SHALL BE 7/8" Ø HIGH STRENGTH BOLTS.

THE CONTRACTOR HAS THE OPTION TO CLIP THE PROTRUDING CORNERS OF THE GUSSET PLATES, AT NO ADDITIONAL COST TO THE DEPARTMENT.

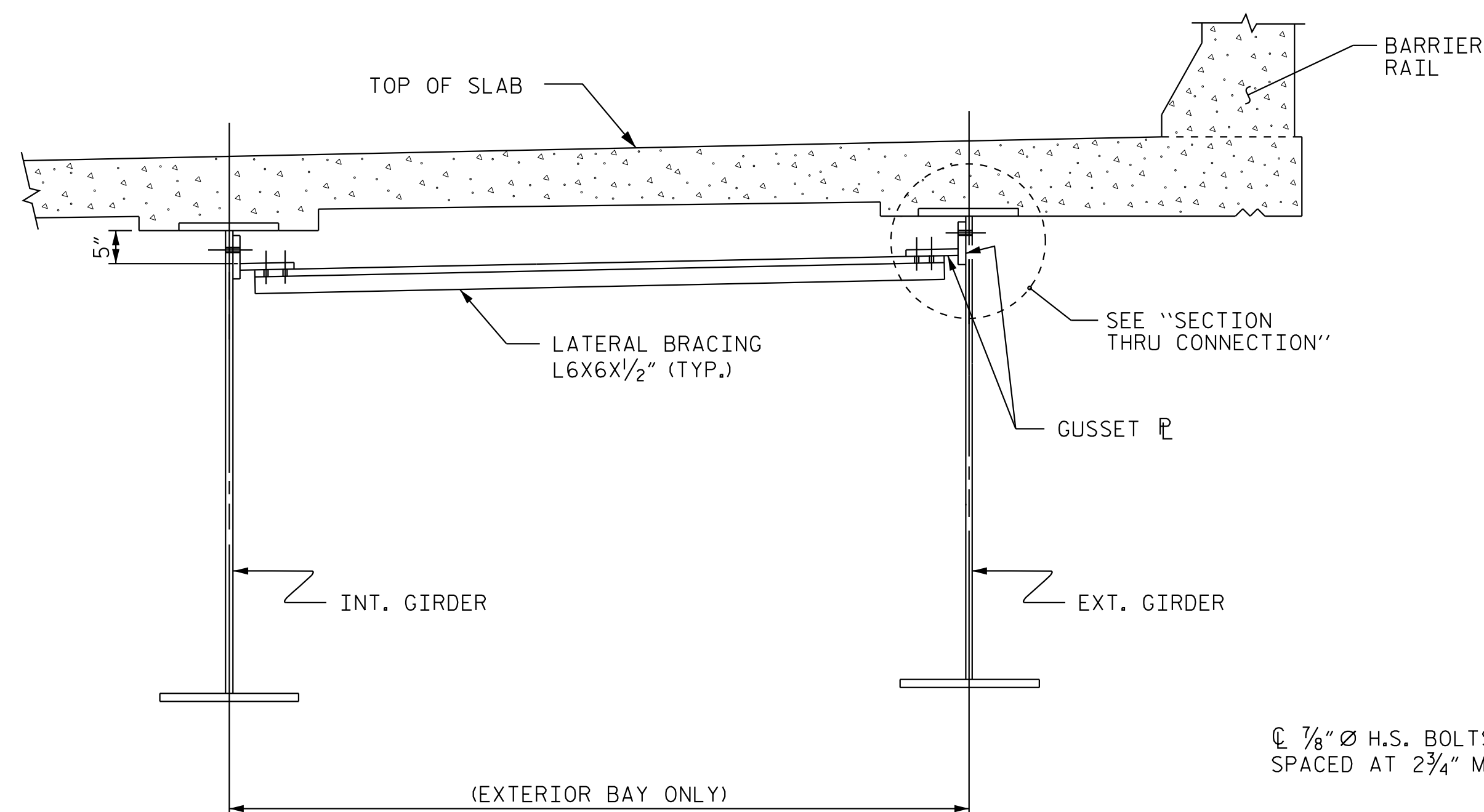
BENT GUSSET PLATES OR ROLLED ANGLE SHAPES MAY BE SUBSTITUTED FOR THE WELDED GUSSET PLATES DETAILED IF APPROVED BY THE ENGINEER, AT NO ADDITIONAL COST TO THE DEPARTMENT.

INSTALL THE LATERAL BRACING AFTER ERECTING THE EXTERIOR GIRDER AND THE ADJACENT INTERIOR GIRDER AND INSTALLING THE INTERMEDIATE DIAPHRAGMS.

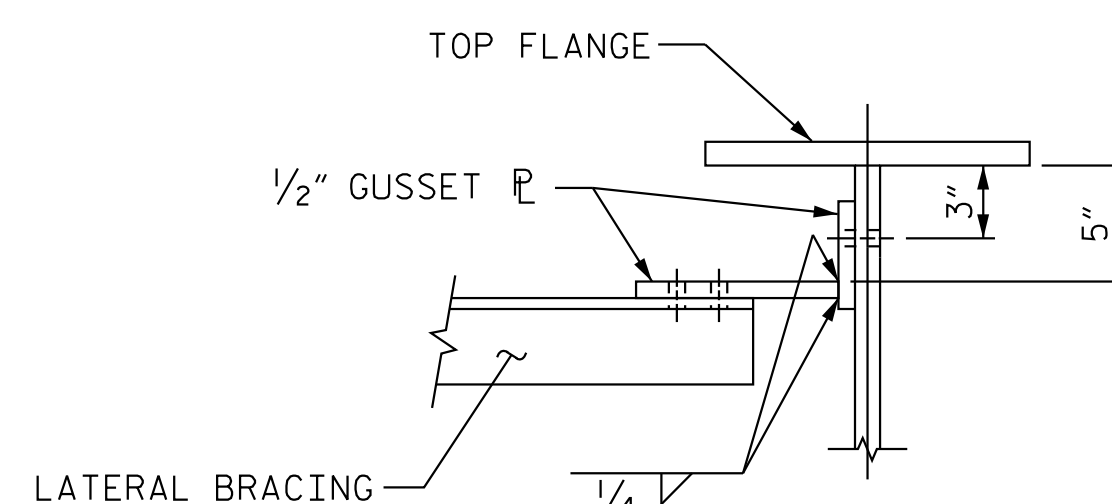


**PART PLAN - NEAR TOP FLANGE LATERAL BRACING**

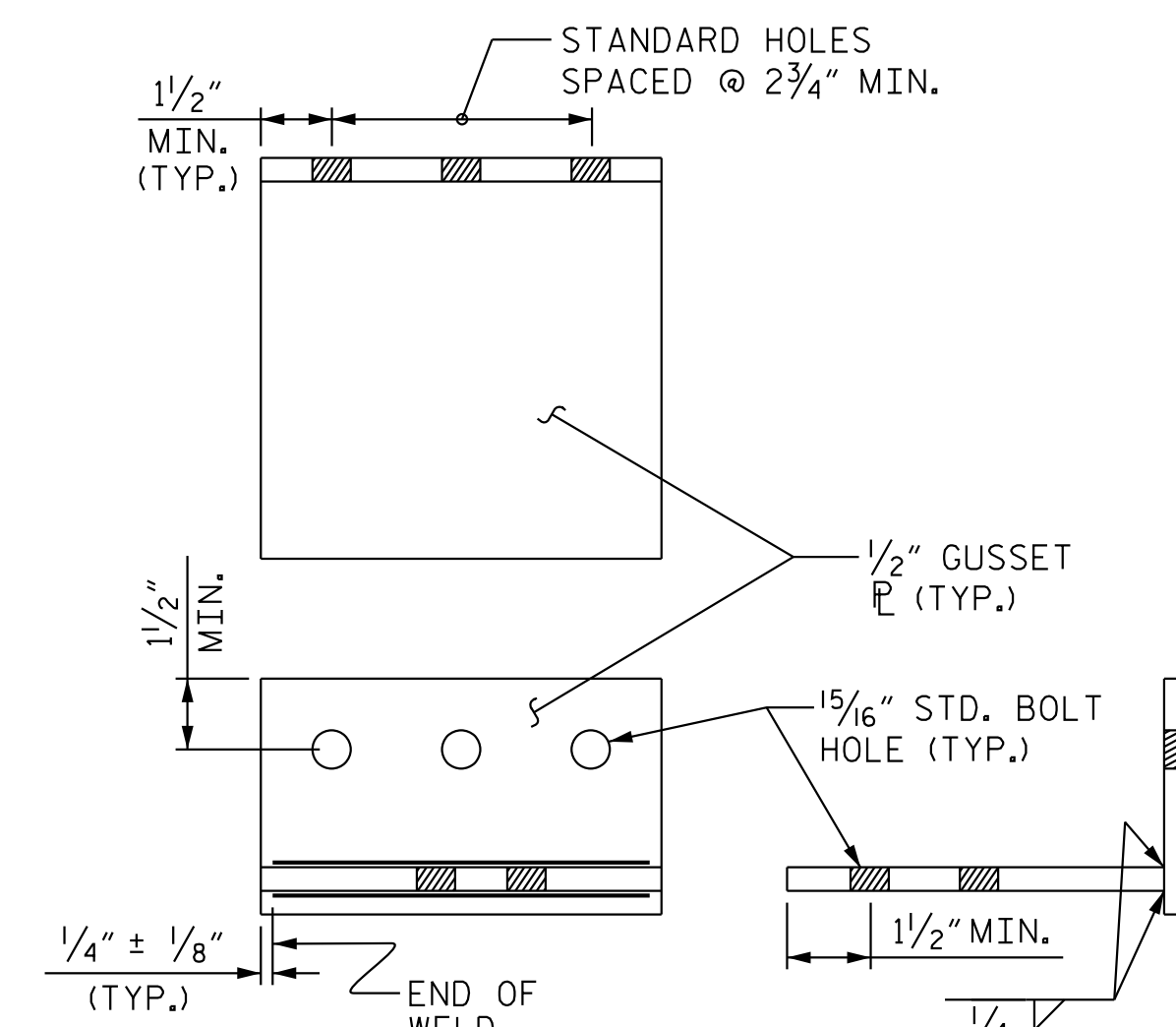
(THROUGHOUT EXTERIOR BAYS ONLY)  
(TRAFFIC SIGNAL SUPPORT NOT SHOWN FOR CLARITY)



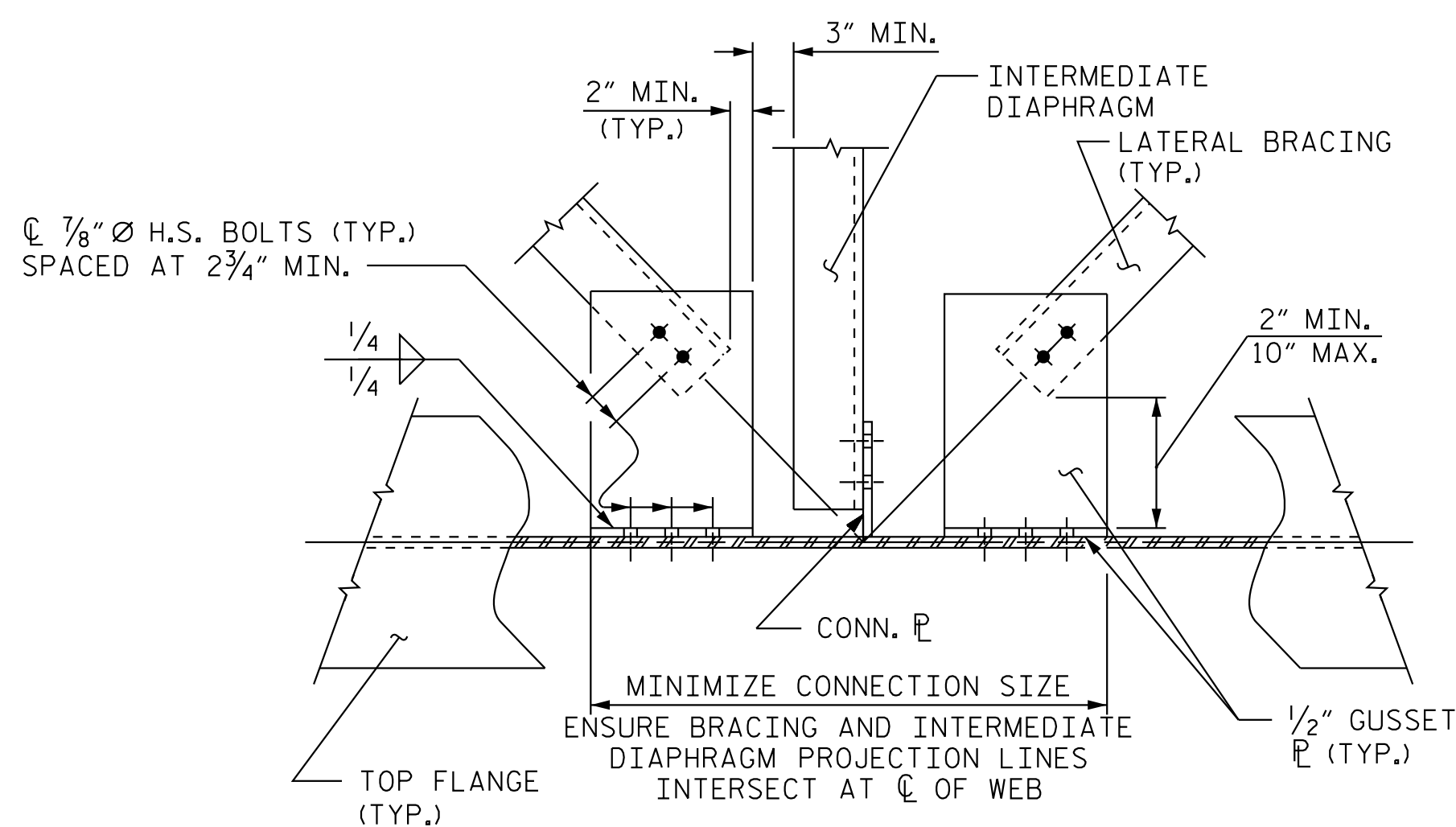
**SECTION A-A**



**SECTION THRU CONNECTION**



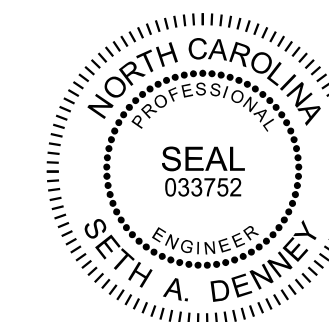
**CONNECTION DETAIL**



**DETAIL "A"**

PROJECT NO. U-5806  
CABARRUS COUNTY  
 STATION: 15+75.56 -Y1-  
27+06.95 -L-

SHEET 5 OF 5



Designed by:  
Seth A. Denney  
10/23/2017

Designed by:  
Andrew L. Phillips  
10/23/2017

STATE OF NORTH CAROLINA  
DEPARTMENT OF TRANSPORTATION  
RALEIGH

**STANDARD  
LATERAL BRACING**

REVISIONS

NO.	BY:	DATE:	NO.	BY:	DATE:
1			3		
2			4		

SHEET NO.

S-21

TOTAL SHEETS

50

10/23/2017 K:\BIDI\_Structures\Bridges\NC\01036388 - U-5806 - Final Design\Cad\Drawn\021\_U-5806\_LB01.dgn

ASSEMBLED BY : D.D. LOWERY	DATE : 10/17
CHECKED BY : A.L. PHILLIPS	DATE : 10/17
DRAWN BY : WMC 6/11	ADDED: 10/31/11
CHECKED BY : GM 6/11	

**DOCUMENT NOT CONSIDERED FINAL  
UNLESS ALL SIGNATURES COMPLETED**

**Kimley»Horn**  
 421 Fayetteville Street, Suite 600  
 Raleigh, NC 27601-1772  
 Phone (919) 677-2000 NC LICENSE # F-0102

This document, together with the concepts and designs presented herein, is an integral part of the project. It is intended only for the specific project and site shown, and its use for any other project or site without the written authorization and approval of Kimley-Horn and Associates, Inc. shall be without liability to Kimley-Horn and Associates, Inc.