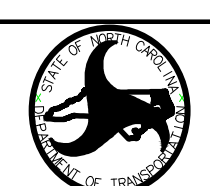
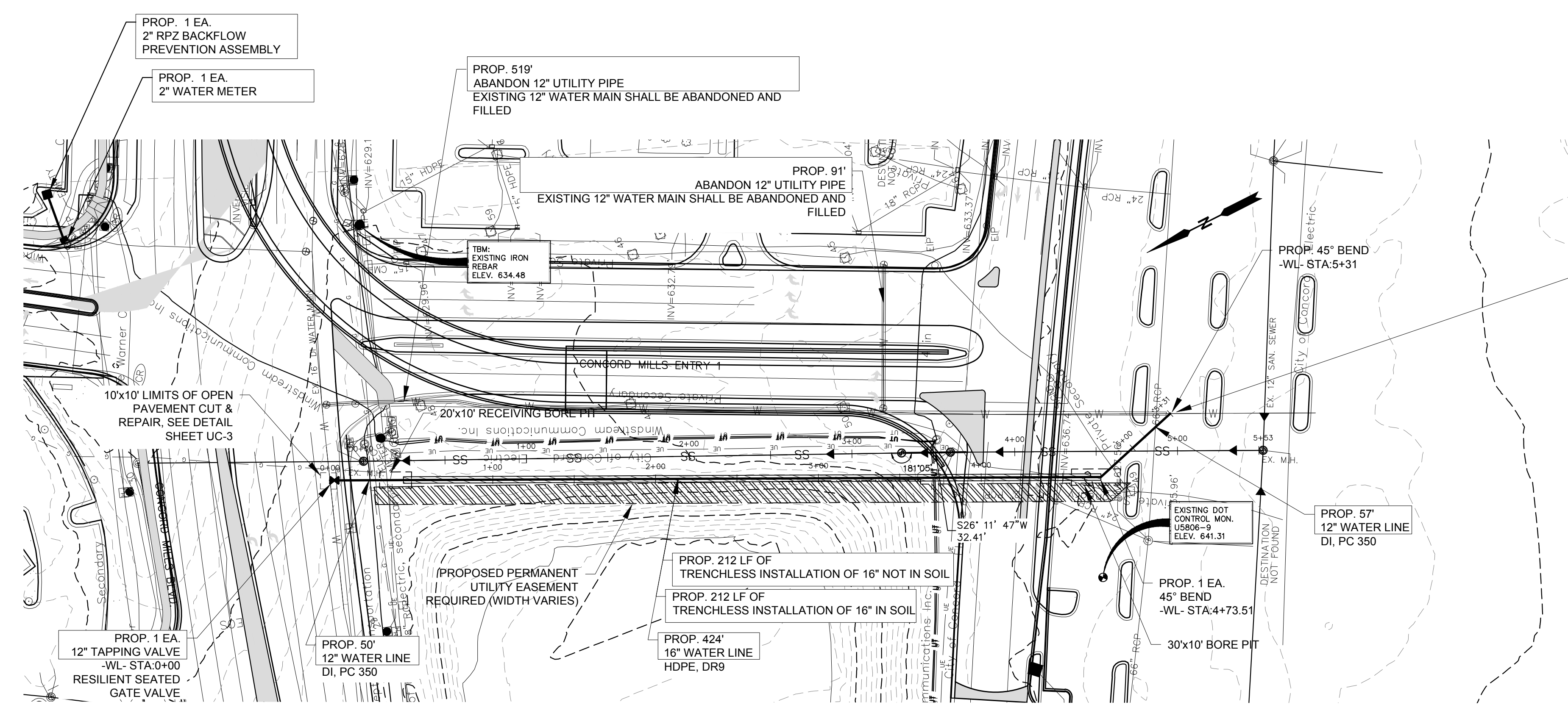
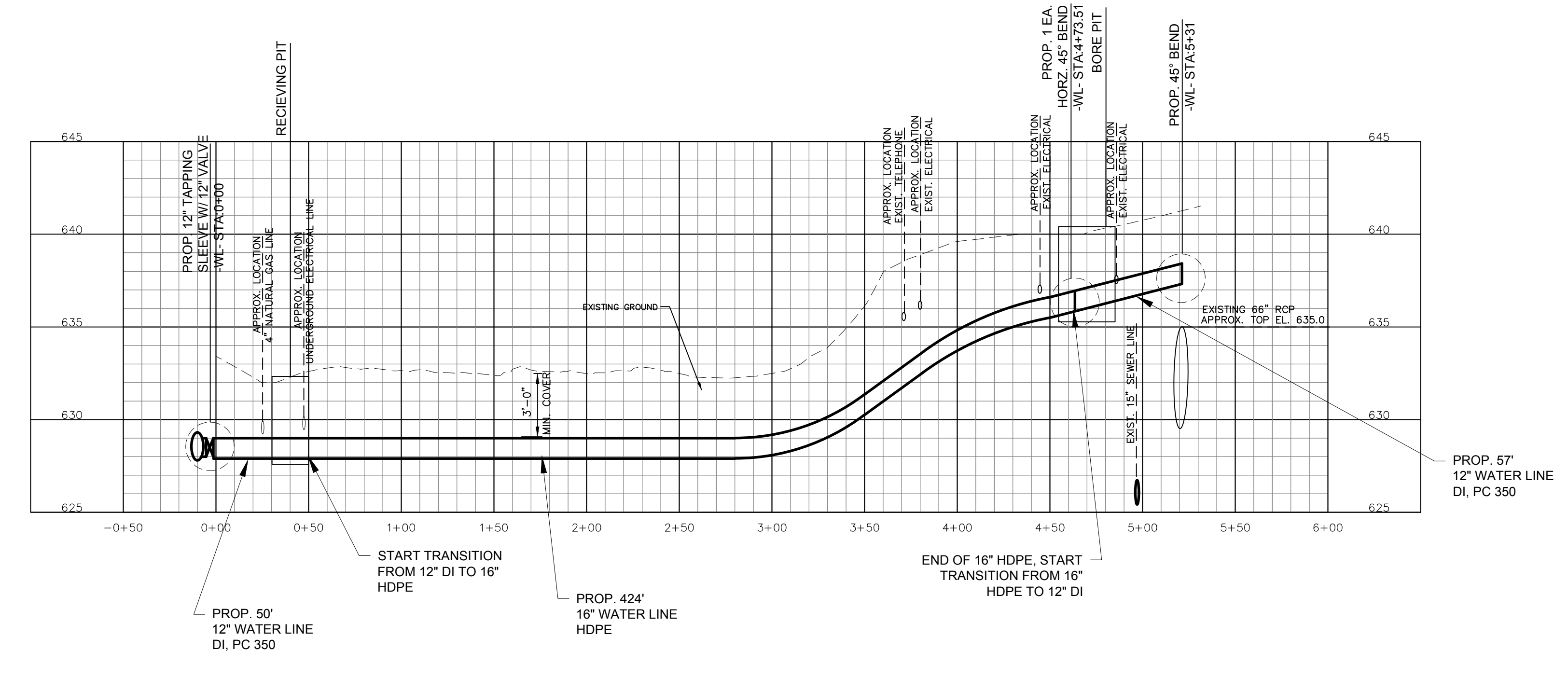


PROJECT REFERENCE NO. U-5806	SHEET NO. UC-5
DESIGNED BY: CMS DRAWN BY: EES CHECKED BY: CMS APPROVED BY: DATE: 12/08/2016 REVISED:	 UTILITIES UNIT UTILITIES ENGINEERING SECTION 1555 MAIL SERVICES CENTER RALEIGH NC 27689-1555 PHONE (919) 707-6690 FAX (919) 250-4151
UTILITY CONSTRUCTION DOCUMENT NOT CONSIDERED FINAL UNLESS ALL SIGNATURES COMPLETED	



NOTE:
CONTRACTOR TO COORDINATE CONNECTION WITH
CITY OF CONCORD WATER RESOURCES AND FIRE
MARSHALL TO ENSURE SERVICE AND FIRE
PROTECTION IS MAINTAINED TO MALL

PLAN
SCALE: 1" = 50'



PROFILE
SCALE: HORIZ: 1" = 50'
VERT: 1" = 5'

NOTE:
THE ESTIMATED QUANTITY OF DUCTILE IRON WATER
PIPE FITTINGS ON THIS PLAN SHEET IS 1185 POUNDS.
THE ACTUAL QUANTITY AND TYPE OF FITTINGS WILL
VARY BASED ON FIELD CONDITIONS



PREPARED BY
ENGINEERING DEPARTMENT
CITY OF CONCORD
CABARRUS COUNTY
P.O. BOX 308
CONCORD N.C. 28026
(704) 920-5425

