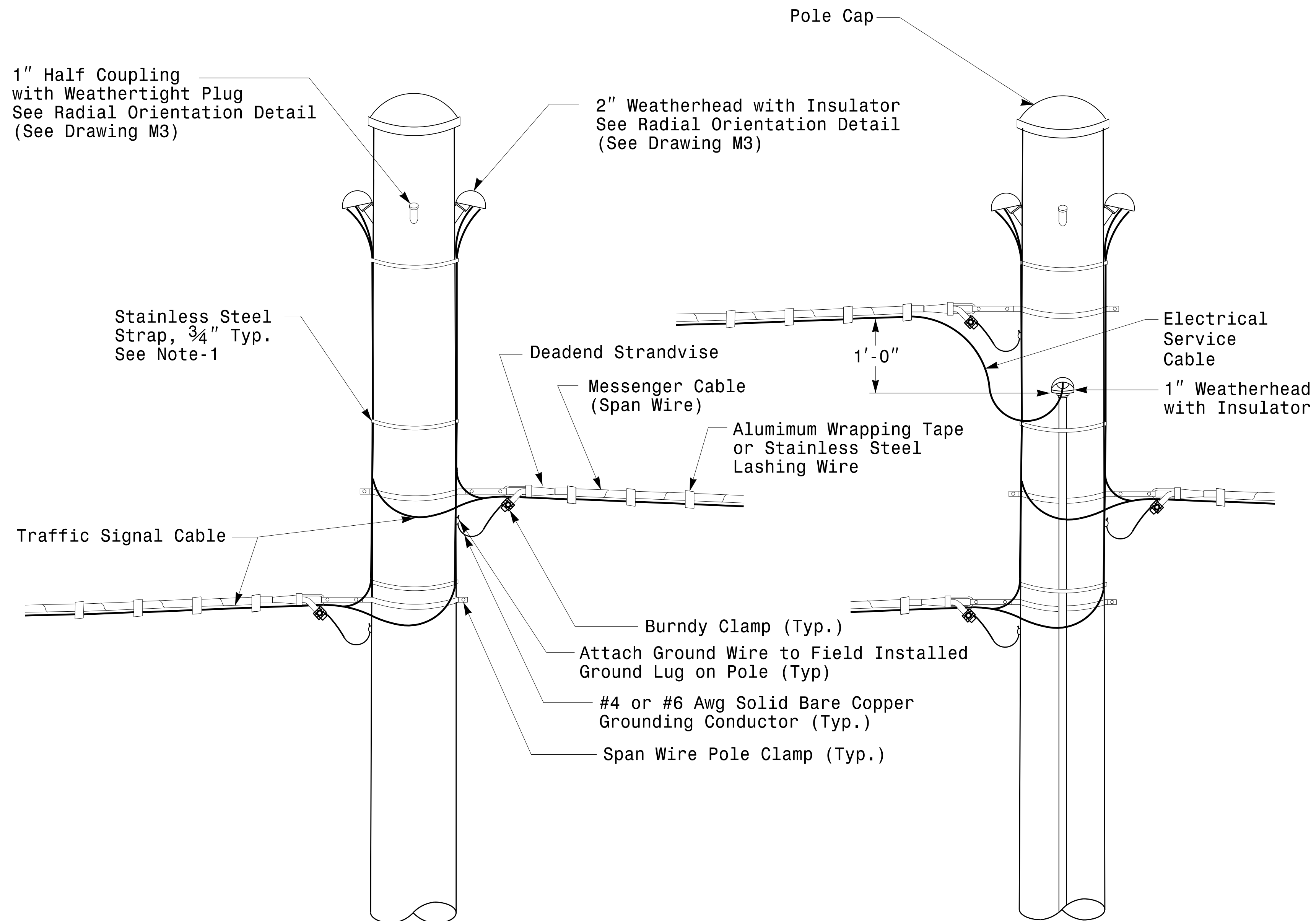


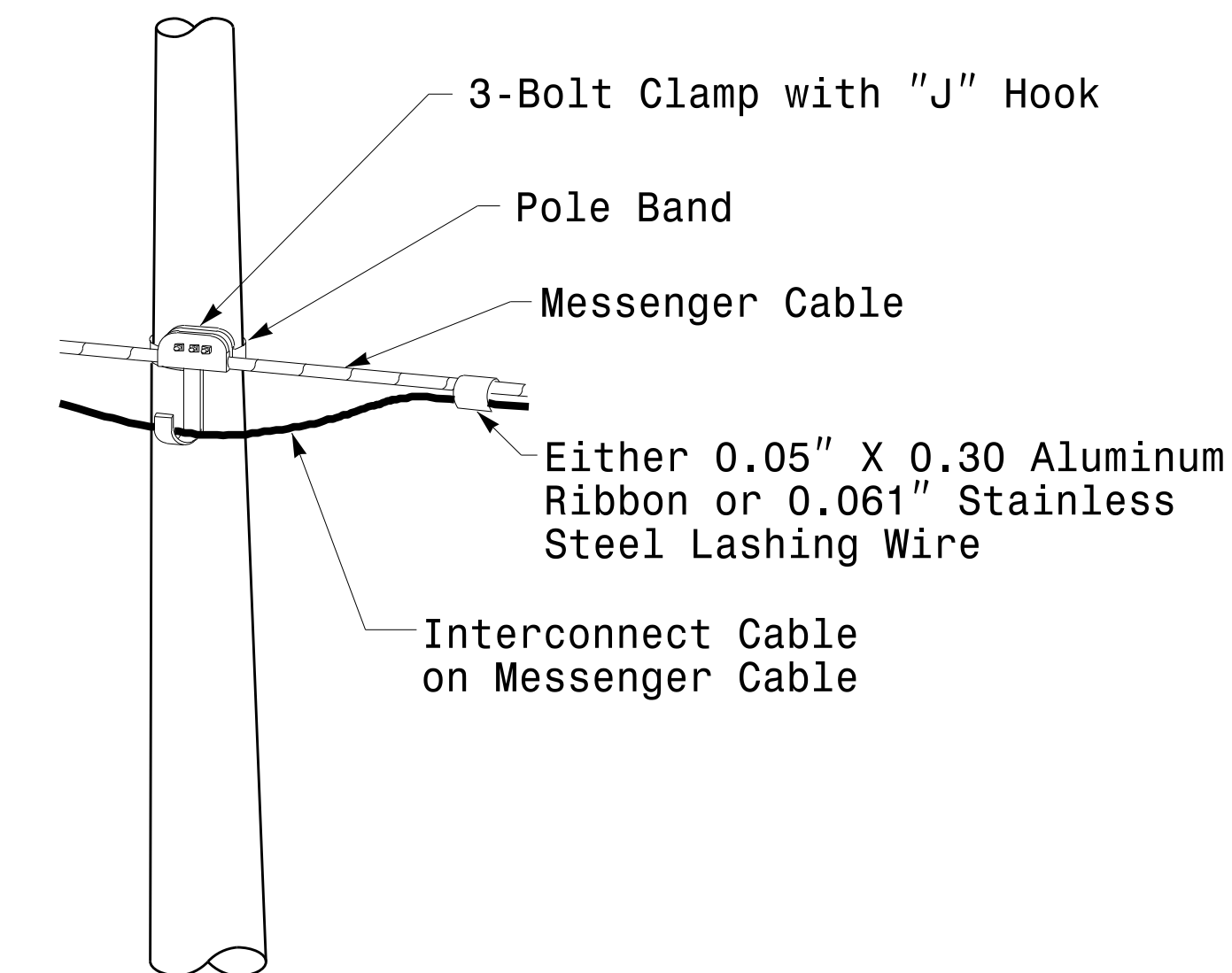
Fabrication Details - Strain Pole Attachments



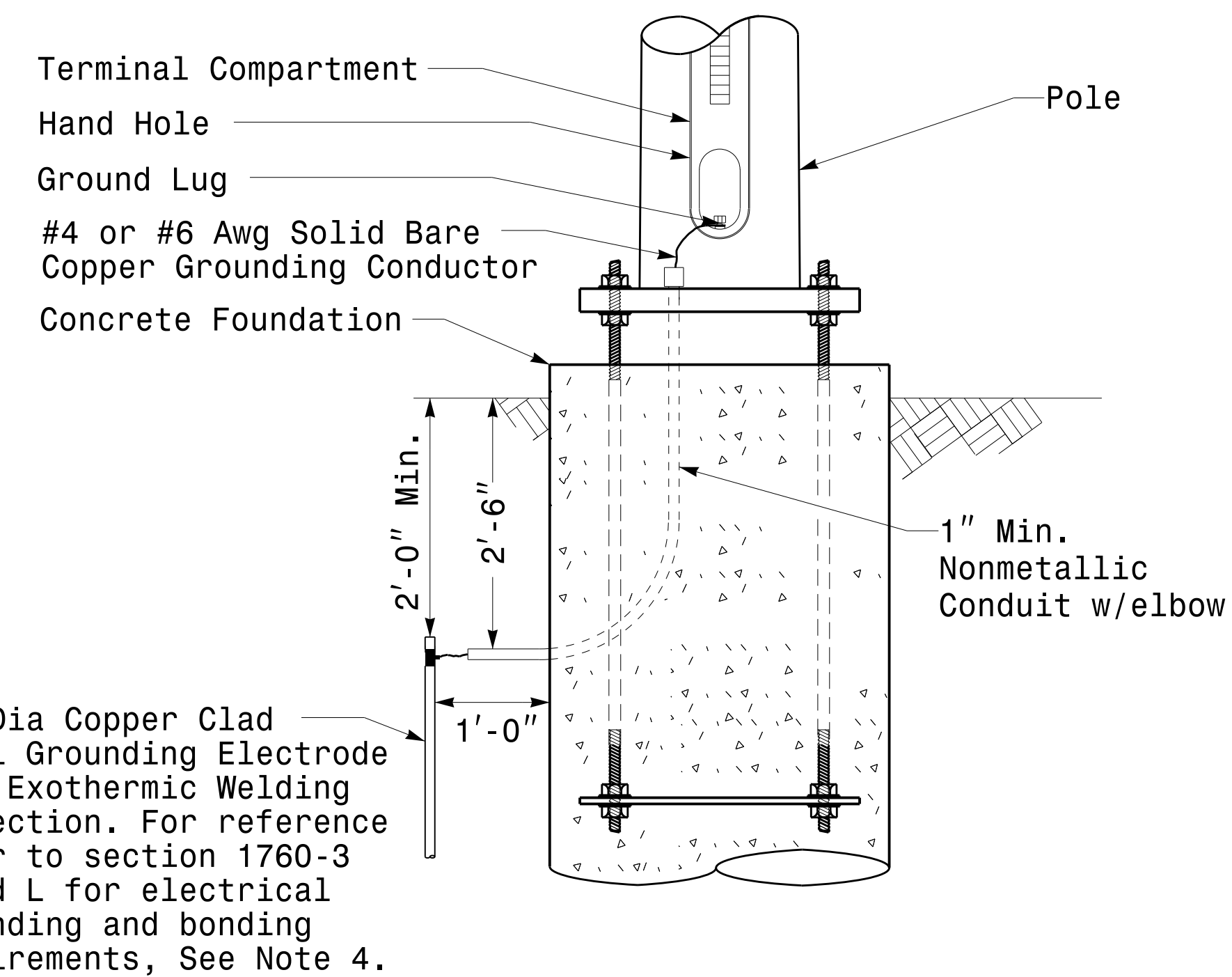
**Strain Pole Attachments**

**NOTE:**

1. Strap all signal cables to the side of the pole with 3/4" stainless steel straps when the distance between the spanwire attachment clamp and the weatherheads exceeds 3'-0".
2. Provide minimum two spanwire pole clamps per pole.
3. It is prohibited to attach two span wires at one pole clamp.
4. For general requirements refer to NCDOT Standard Specifications for Roadway and Structures, January 2012.

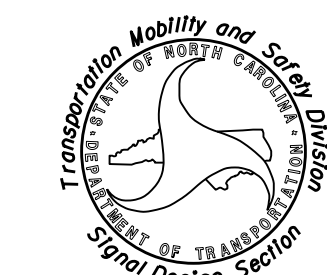


**Attachment of Cable to Intermediate Metal Pole**



**Metal Pole Grounding Detail For Strain Pole and Mast Arm**

Prepared in the Offices of:



750 N. Greenfield Pkwy, Garner, NC 27529

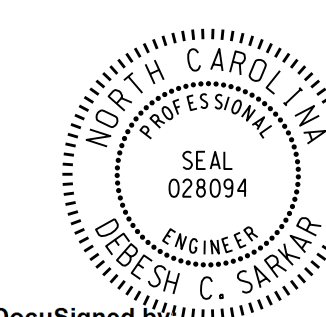
SCALE  
0 NA  
NONE

**Typical Fabrication Details For Strain Pole Attachments**

PLAN DATE: FEBRUARY 2016 DESIGNED BY: C.F. ANDREWS  
PREPARED BY: N. BITTING REVIEWED BY: D.C. SARKAR

REVISIONS	INIT.	DATE

SEAL



DocuSigned By  
**Debash C. Sarkar**

2/17/2016  
DATE