


APPROVED: *Kevin W. Bishop*
DATE: 9/5/2017
SEAL

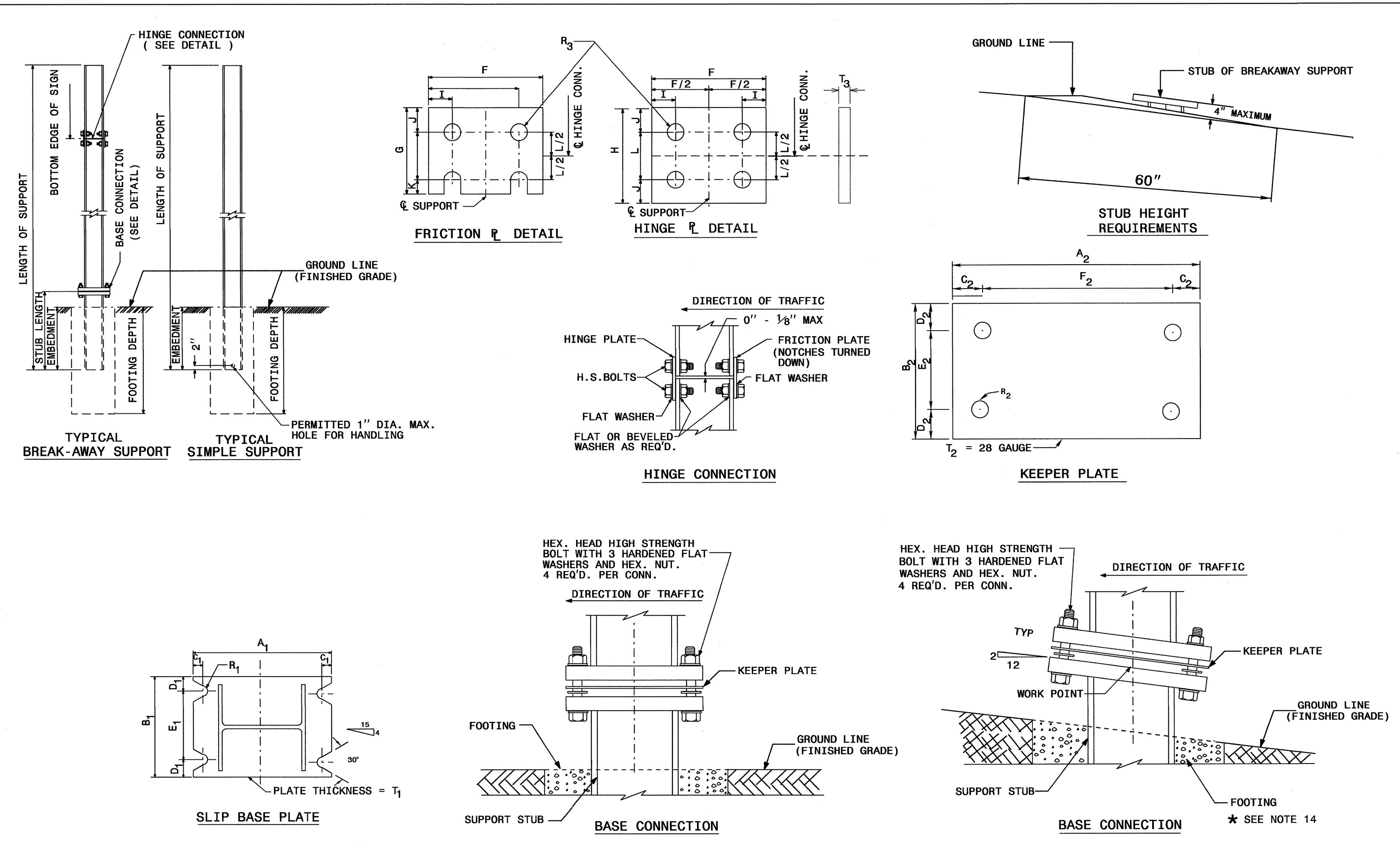
TIP NO. SHEET NO.
APPROVED: *[Signature]*
DATE: 7/26/13
SEAL


STATE OF NORTH CAROLINA
DEPT. OF TRANSPORTATION
DIVISION OF HIGHWAYS
RALEIGH, N.C.

ENGLISH STANDARD DRAWING FOR
GROUND MOUNTED SIGN SUPPORTS

SHEET 1 OF 3
903D10

26-JUL-2015 09:37
S:\SDD\Standards\Group_NEW\Standards and Drawings\Drawings\2012 Standard Dwg\Division 9 Final\090310_sgn_sht01.dgn support-2A.dgn
15806-5IGN_psh-2A.dgn



SEE SHEET 2 OF 3 FOR
BASE CONNECTION DATA
HINGE CONNECTION DATA
& FOUNDATION DATA.
SEE SHEET 3 OF 3 FOR
GENERAL NOTES.

STATE OF NORTH CAROLINA
DEPT. OF TRANSPORTATION
DIVISION OF HIGHWAYS
RALEIGH, N.C.

ENGLISH STANDARD DRAWING FOR
GROUND MOUNTED SIGN SUPPORTS

SHEET 1 OF 3
903D10

REVISED SIGNING
ROADWAY STANDARD DRAWING

PLANS PREPARED BY :
RK&K
RUMMEL, KLEPPER & KAHL, LLP
900 RIDGEFIELD DRIVE SUITE 350
RALEIGH, NORTH CAROLINA 27609-3960
NC LICENSE NO. F-0112 • (919) 878-9560