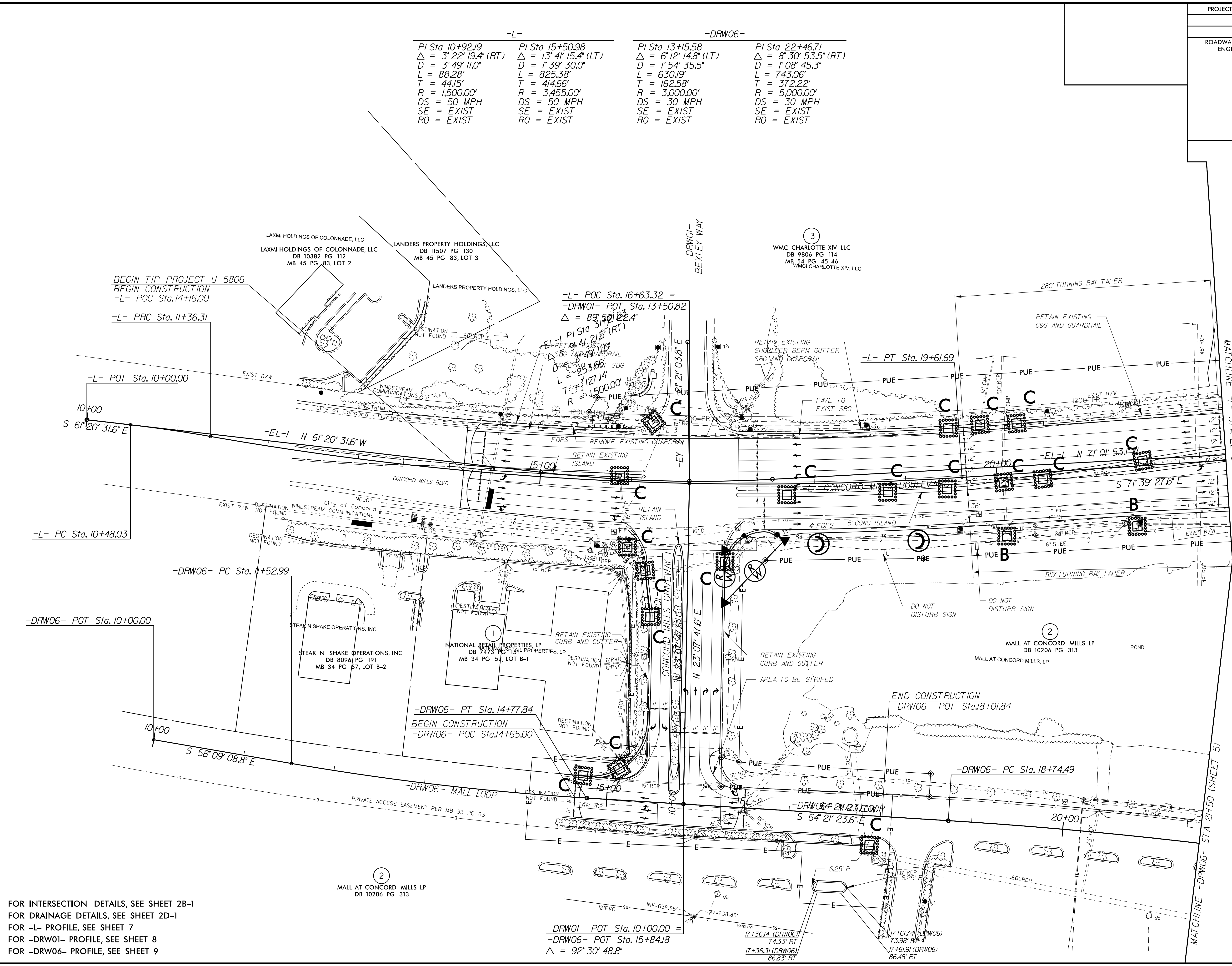


PROJECT REFERENCE NO.		SHEET NO.	
U-5806		EC-7/CONST.4	
RW SHEET NO.			
ROADWAY DESIGN ENGINEER		HYDRAULICS ENGINEER	

-L-		-DRW06-	
PI Sta 10+92.19	PI Sta 15+50.98	PI Sta 13+15.58	PI Sta 22+46.71
$\Delta = 3^{\circ} 22' 19.4"$ (RT)	$\Delta = 13^{\circ} 41' 15.4"$ (LT)	$\Delta = 6^{\circ} 12' 14.8"$ (LT)	$\Delta = 8^{\circ} 30' 53.5"$ (RT)
D = 3' 49' 11.0"	D = 1' 39' 30.0"	D = 1' 54' 35.5"	D = 1' 08' 45.3"
L = 88.28'	L = 825.38'	L = 630.19'	L = 743.06'
T = 44.15'	T = 414.66'	T = 162.58'	T = 372.22'
R = 1,500.00'	R = 3,455.00'	R = 3,000.00'	R = 5,000.00'
DS = 50 MPH	DS = 50 MPH	DS = 30 MPH	DS = 30 MPH
SE = EXIST	SE = EXIST	SE = EXIST	SE = EXIST
RO = EXIST	RO = EXIST	RO = EXIST	RO = EXIST



FOR INTERSECTION DETAILS, SEE SHEET 2B-1
 FOR DRAINAGE DETAILS, SEE SHEET 2D-1
 FOR -L- PROFILE, SEE SHEET 7
 FOR -DRW01- PROFILE, SEE SHEET 8
 FOR -DRW06- PROFILE, SEE SHEET 9

