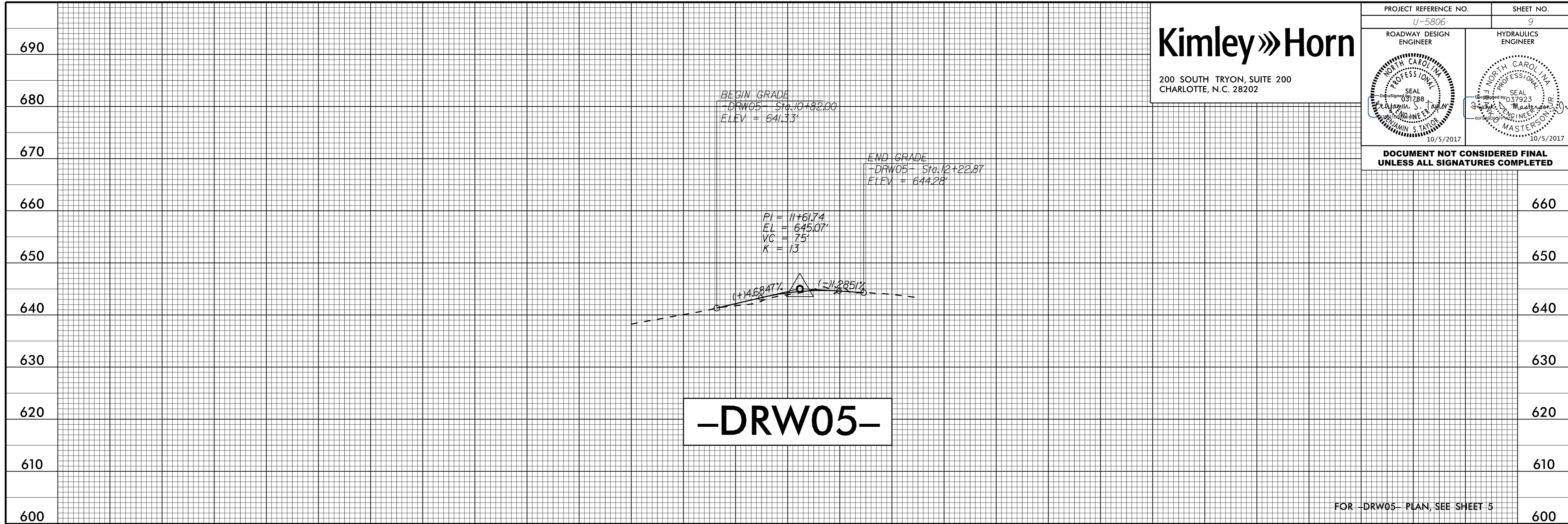


Kimley»Horn

200 SOUTH TRYON, SUITE 200
CHARLOTTE, N.C. 28202

PROJECT REFERENCE NO. U-5806	SHEET NO. 9
ROADWAY DESIGN ENGINEER	HYDRAULICS ENGINEER

**DOCUMENT NOT CONSIDERED FINAL
UNLESS ALL SIGNATURES COMPLETED**



-DRW05-

FOR -DRW05- PLAN, SEE SHEET 5



-DRW06-

FOR -DRW06- PLAN, SEE SHEETS 4 & 5

K:\CHL\PRJ\01036284 U-5806 Concord Mills Flyover\04_CADD\Pro\U5806_rdy_pst\09.dgn

10/5/2017