

PROJECT REFERENCE NO. U-5806	SHEET NO. 5
ROADWAY DESIGN ENGINEER	HYDRAULICS ENGINEER
DOCUMENT NOT CONSIDERED FINAL UNLESS ALL SIGNATURES COMPLETED	

-YI-

PI Sta 14+89.77
Δ = 93° 11' 39.2" (RT)
D = 27' 56" 57.0"
L = 333.44'
T = 216.76'
R = 205.00'
DS = 25 MPH
SE = 4%
RO = 120'

PI Sta 17+14.52
Δ = 8° 25' 35.0" (RT)
D = 3° 54' 20.3"
L = 215.75'
T = 108.07'
R = 1467.00'
DS = 25 MPH
SE = 4%
RO = 120'

-L-

PI Sta 26+86.27
Δ T3
D = 3° 54' 39.5"
L = 526.30'
T = 266.02'
R = 1465.00'
DS = 40 MPH
SE = EXIST
RO = EXIST

-DRW03-

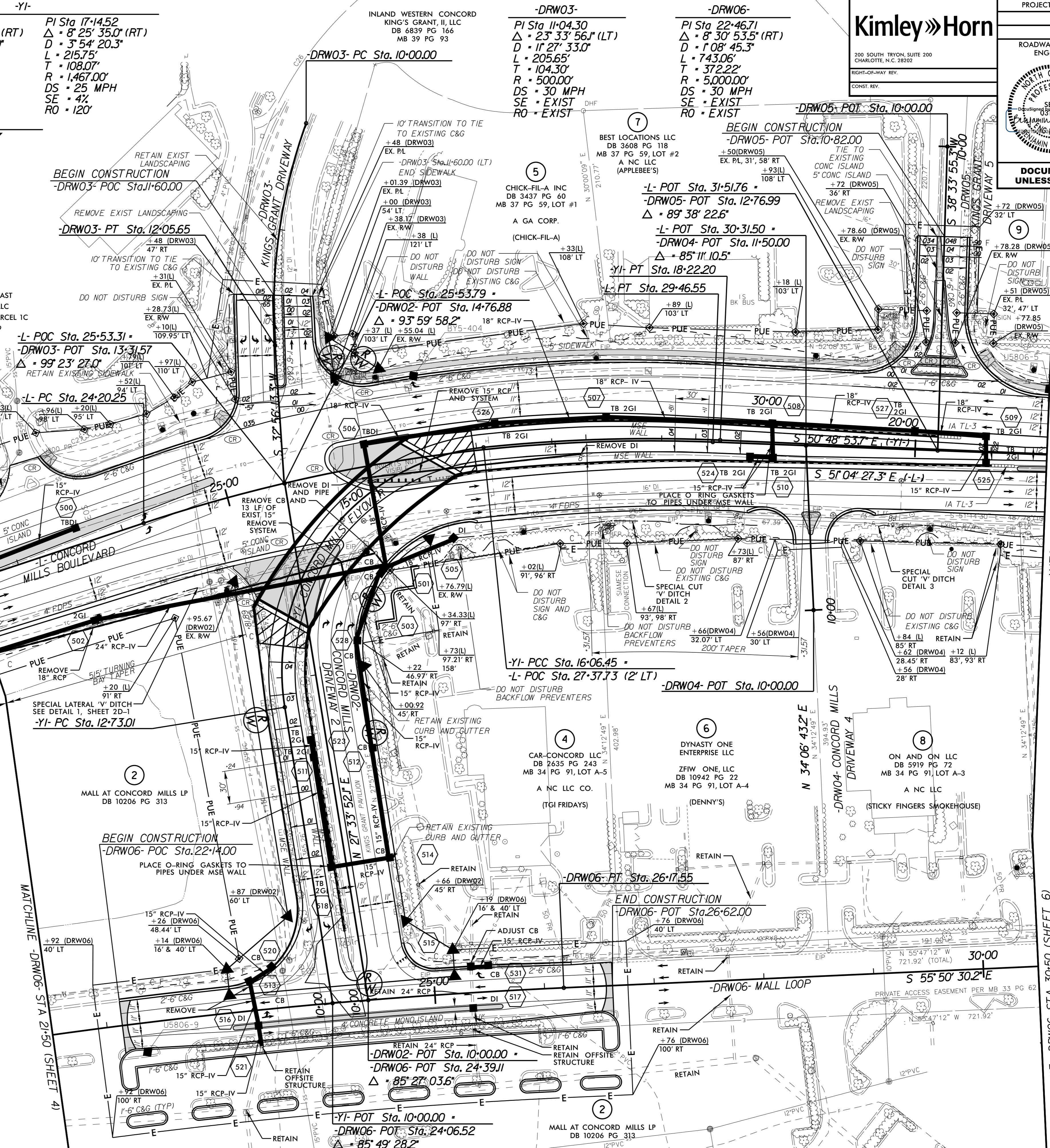
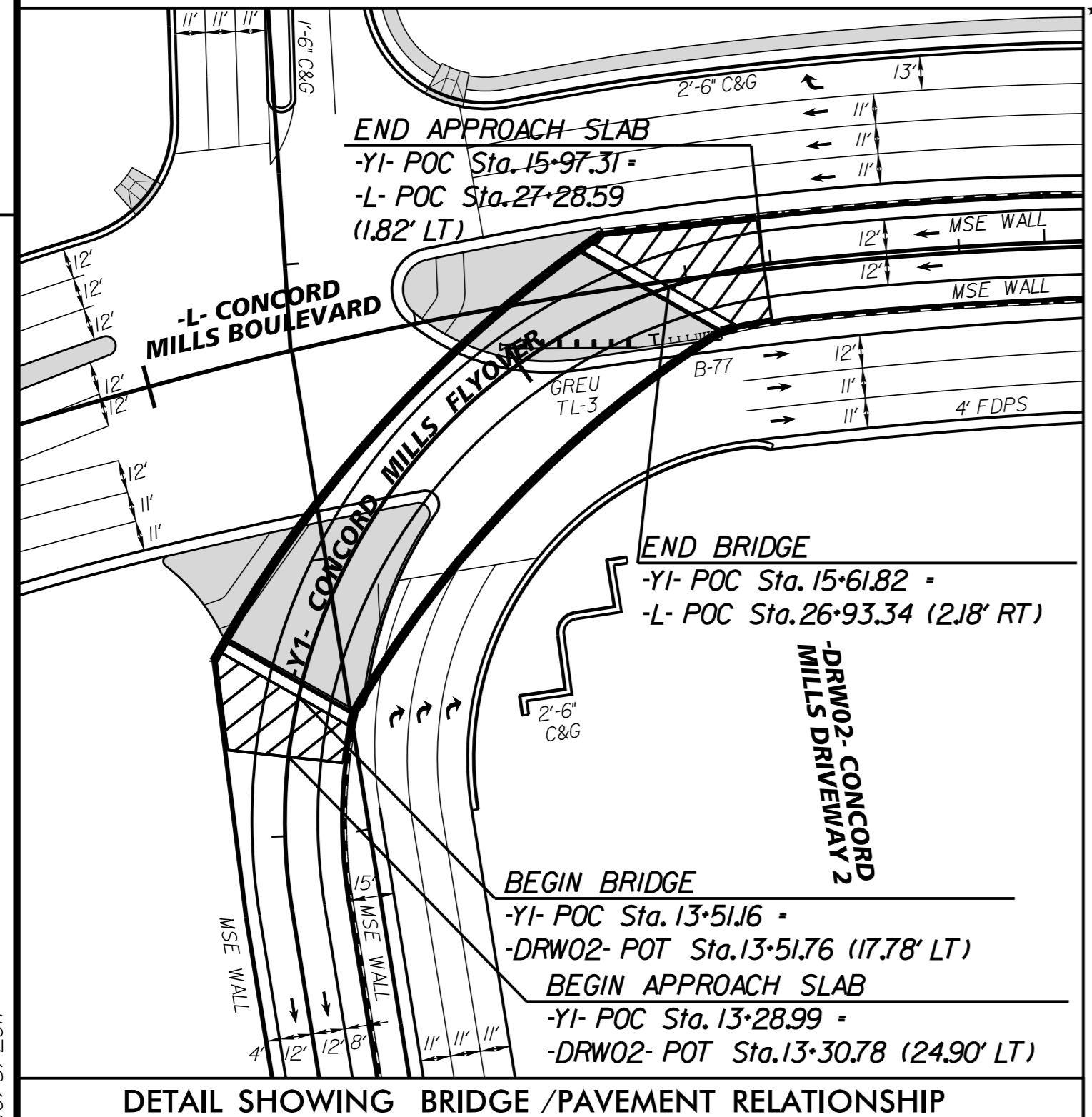
PI Sta 11+04.30
Δ = 23° 33' 56.1" (LT)
D = 11' 27" 33.0"
L = 205.65'
T = 104.30'
R = 500.00'
DS = 30 MPH
SE = EXIST
RO = EXIST

-DRW06-

PI Sta 22+46.71
Δ = 8° 30' 53.5" (RT)
D = 1° 08' 45.3"
L = 743.06'
T = 372.22'
R = 5000.00'
DS = 30 MPH
SE = EXIST
RO = EXIST

FOR INTERSECTION DETAILS, SEE SHEET 2B-1
FOR DRAINAGE DETAILS, SEE SHEET 2D-1
FOR -L- PROFILE, SEE SHEET 7
FOR -DRW02- PROFILE, SEE SHEET 8
FOR -DRW03- PROFILE, SEE SHEET 8
FOR -DRW05- PROFILE, SEE SHEET 9
FOR -DRW06- PROFILE, SEE SHEET 9
FOR STRUCTURES PLANS, SEE SHEETS S-1 THRU S-48

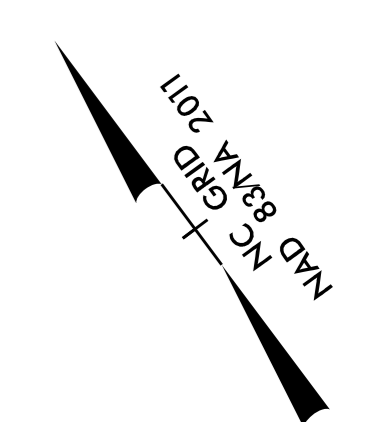
*DESIGN EXCEPTION REQUIRED FOR HORIZONTAL SSD



MATCHLINE -L- STA 22+50 (SHEET 4)

MATCHLINE -L- STA 32+50 (SHEET 6)

MATCHLINE -DRW06- STA 30+50 (SHEET 6)



10/5/2017