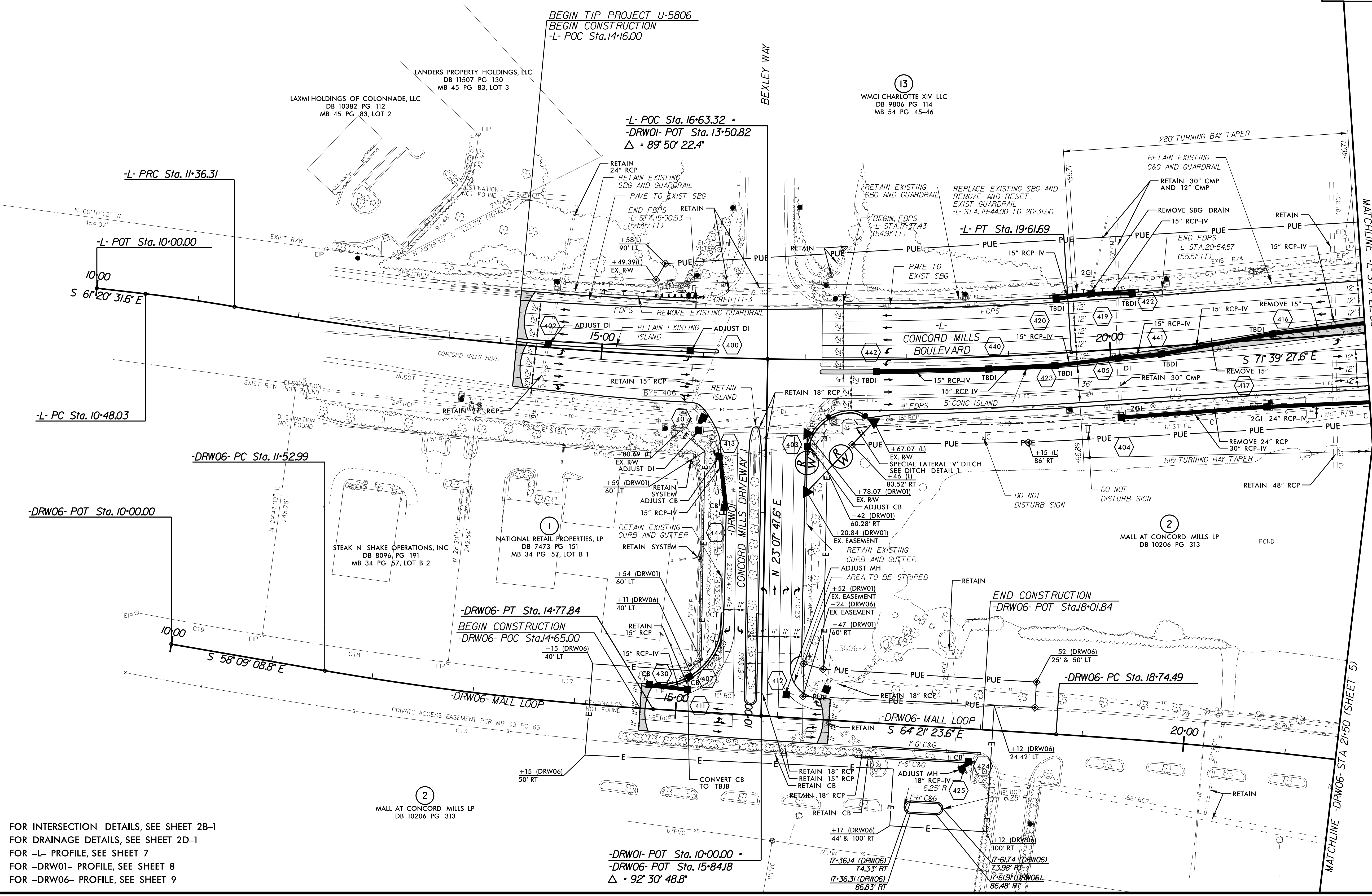
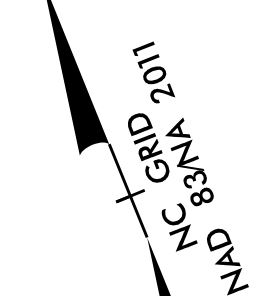


PROJECT REFERENCE NO. U-5806	SHEET NO. 4
R/W SHEET NO.	
ROADWAY DESIGN ENGINEER	HYDRAULICS ENGINEER

**DOCUMENT NOT CONSIDERED FINAL
UNLESS ALL SIGNATURES COMPLETED**

-L-		-DRW06-	
PI Sta 10+92.19 Δ = 3° 22' 19.4" (RT) D = 3' 49' 11.0" L = 88.28' T = 44.15' R = 1,500.00' DS = 50 MPH SE = EXIST RO = EXIST	PI Sta 15+50.98 Δ = 13° 41' 15.4" (LT) D = 1' 39' 30.0" L = 825.38' T = 414.66' R = 3,455.00' DS = 50 MPH SE = EXIST RO = EXIST	PI Sta 13+15.58 Δ = 6° 12' 14.8" (LT) D = 1' 54' 35.5" L = 630.19' T = 162.58' R = 3,000.00' DS = 30 MPH SE = EXIST RO = EXIST	PI Sta 22+46.71 Δ = 8° 30' 53.5" (RT) D = 1' 08' 45.3" L = 743.06' T = 372.22' R = 5,000.00' DS = 30 MPH SE = EXIST RO = EXIST

REVISIONS



FOR INTERSECTION DETAILS, SEE SHEET 2B-1
 FOR DRAINAGE DETAILS, SEE SHEET 2D-1
 FOR -L- PROFILE, SEE SHEET 7
 FOR -DRW01- PROFILE, SEE SHEET 8
 FOR -DRW06- PROFILE, SEE SHEET 9

10/5/2017

-DRW01- POT Sta. 10+00.00
 -DRW06- POT Sta. 15+84.18
 Δ = 92° 30' 48.8"

MATCHLINE -L- STA 22+50 (SHEET 5)

MATCHLINE -DRW06- STA 21+50 (SHEET 5)