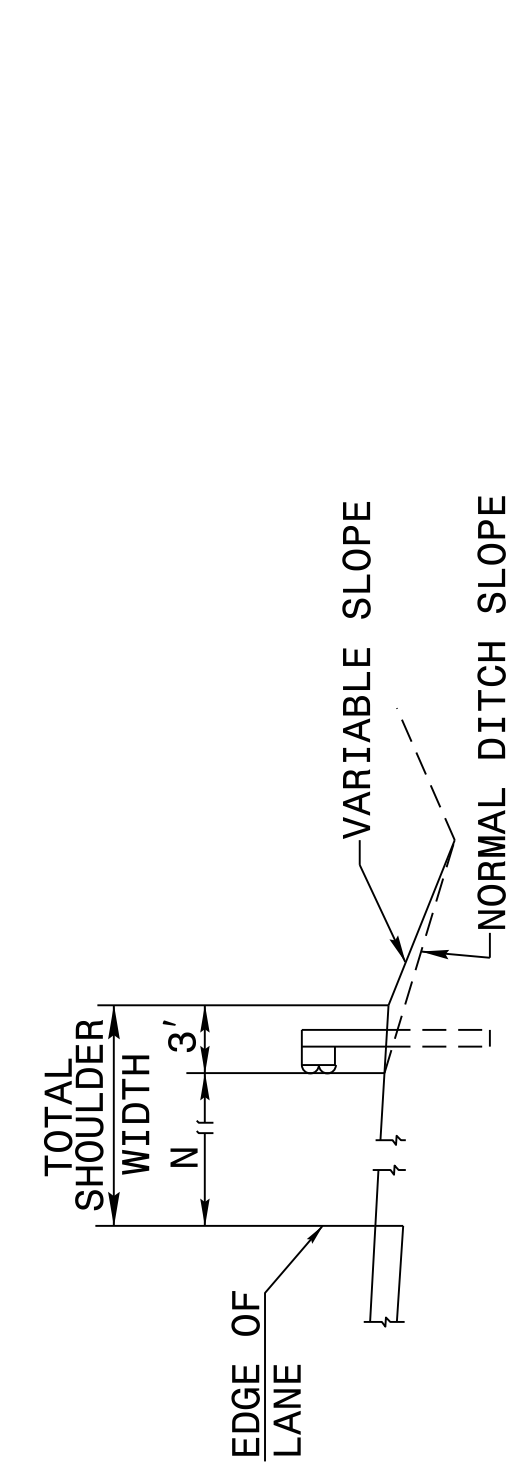
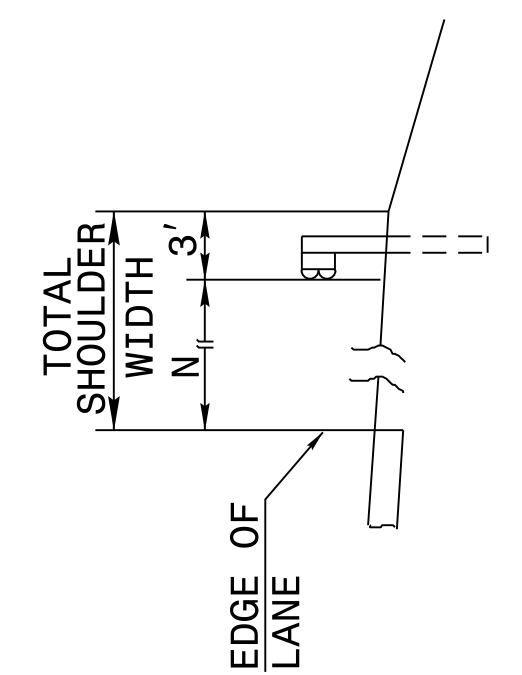


28-JUN-2017 08:28 S:\Contracts\Projects\Special Details\Standard Drawings\Division 8\662d01 862d03 862d01.dgn
 Jhowerton AT_CSD-292595

STATE OF NORTH CAROLINA
 DEPT. OF TRANSPORTATION
 DIVISION OF HIGHWAYS
 RALEIGH, N.C.

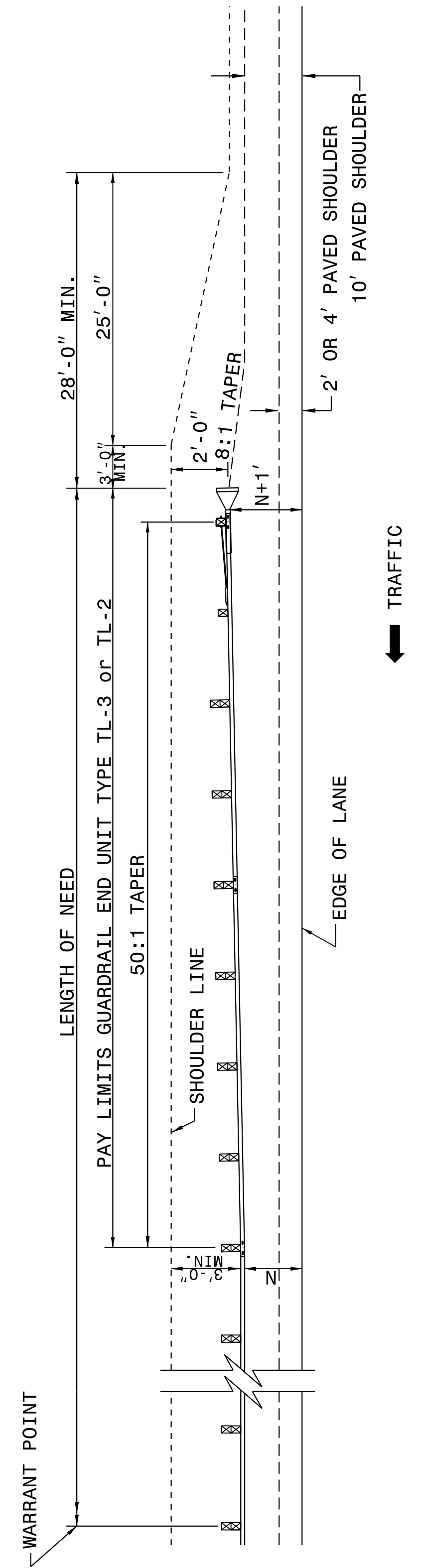


CUT SECTION



FILL SECTION

"N" = DISTANCE FROM EDGE OF LANE TO FACE OF GUARDRAIL WHERE GUARDRAIL IS PARALLEL TO LANE.

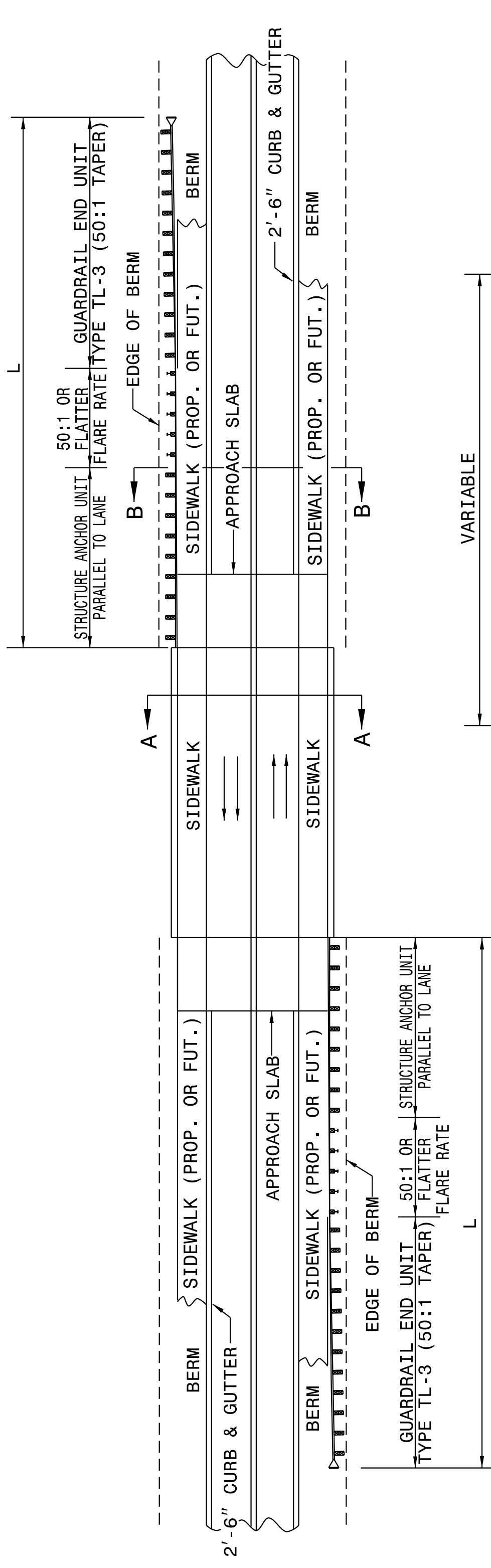


FOR POSTED SPEEDS ≥ 45mph USE GREU TYPE TL-3
 FOR POSTED SPEEDS < 45mph USE GREU TYPE TL-2

ROADWAY DETAIL DRAWING FOR
GUARDRAIL PLACEMENT

SHEET 6 OF 11
862D01

STATE OF NORTH CAROLINA
 DEPT. OF TRANSPORTATION
 DIVISION OF HIGHWAYS
 RALEIGH, N.C.



MINIMUM GUARDRAIL LENGTHS "L" REQUIRED AT BRIDGE APPROACHES ON 2'-6" CONCRETE CURB AND GUTTER ROADWAYS	"L"
DESIGN SPEED (MPH)	"L"
40	150'
50	225'

NOTE: "L" VALUES ARE BASED ON NO HAZARDS OTHER THAN END OF BRIDGE BEING PRESENT WITHIN THE CLEAR ZONE.

SEE STD. 862D03 FOR STRUCTURE ANCHOR UNITS.

FOR POSTED SPEEDS ≥ 45mph USE GREU TYPE TL-3
 FOR POSTED SPEEDS < 45mph USE GREU TYPE TL-2

ROADWAY DETAIL DRAWING FOR
GUARDRAIL PLACEMENT

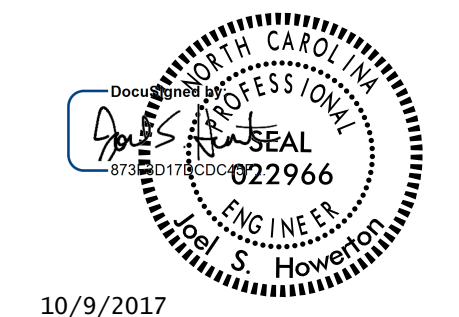
SHEET 5 OF 11
862D01

STANDARD GUARDRAIL PLACEMENT AT BRIDGES WITH 2'-6" CONCRETE CURB AND GUTTER

CONTRACT STANDARDS AND DEVELOPMENT UNIT
 Office 919-707-6950 FAX 919-250-4119

SEE TITLE BLOCK

ORIGINAL BY: J HOWERTON DATE: 06-22-12
 MODIFIED BY: DATE:
 CHECKED BY: DATE:
 FILE SPEC.:



10/9/2017

DOCUMENT NOT CONSIDERED FINAL
 UNLESS ALL SIGNATURES COMPLETED