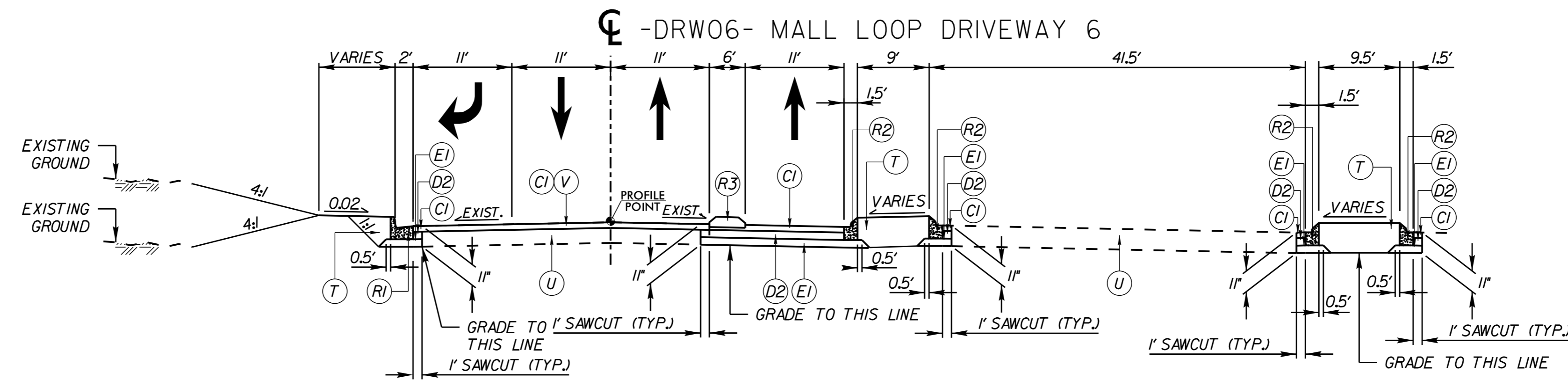
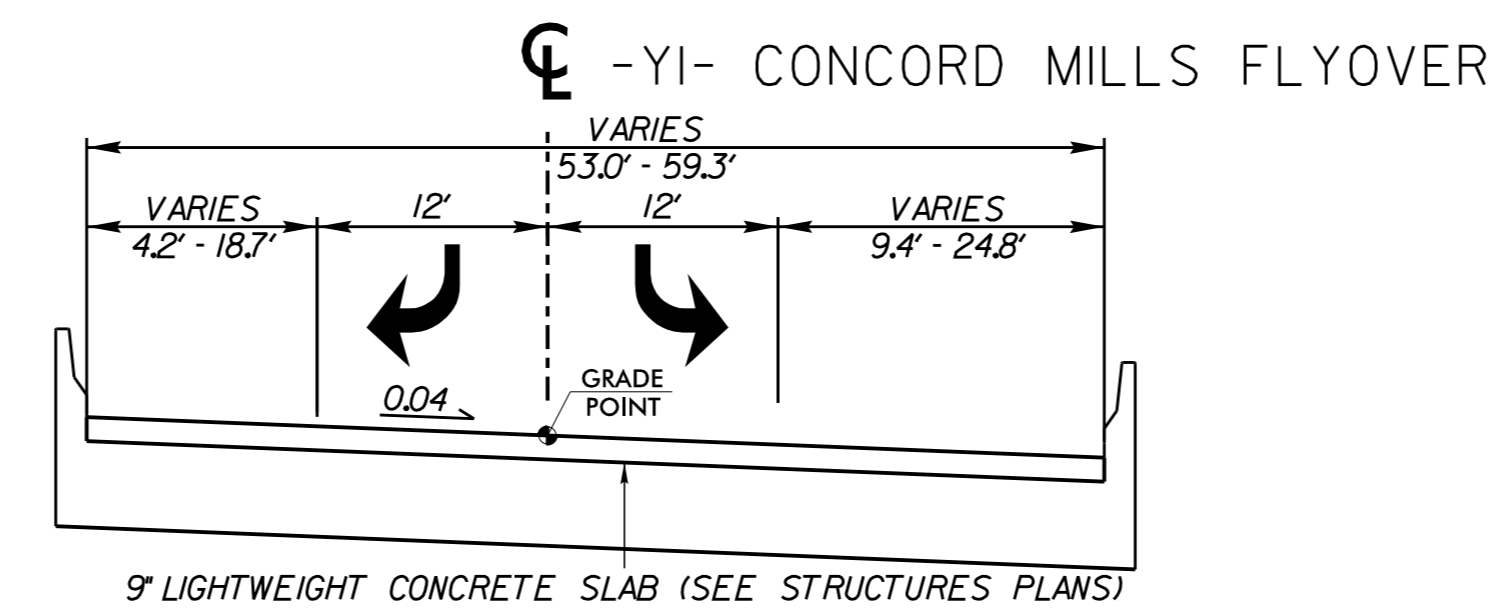


PROJECT REFERENCE NO. U-5806	SHEET NO. 2A-5
ROADWAY DESIGN ENGINEER SEAL 031788 10/9/2017 WILLIAM S. TAYLOR	PAVEMENT DESIGN ENGINEER SEAL 022896 10/10/2017 CLARK S. MORRISON

**DOCUMENT NOT CONSIDERED FINAL
UNLESS ALL SIGNATURES COMPLETED**



TYPICAL SECTION NO. 12
-DRW06- STA 22+14.00 TO STA 26+62.00



BRIDGE TYPICAL SECTION NO. 1
-Y1- STA 13+51.6 (BEGIN BRIDGE) TO STA 15+61.82 (END BRIDGE)

PAVEMENT SCHEDULE
(FINAL PAVEMENT DESIGN)

C1	3" S9.5B
C2	3" S9.5C
C3	VAR. DEPTH S9.5B
C4	VAR. DEPTH S9.5C
D1	2.5" I19.0B
D2	4" I19.0B
D3	4" I19.0C
D4	VAR. DEPTH I19.0B
D5	VAR. DEPTH I19.0C
E1	4" B25.0B
E2	4" B25.0C
E3	VAR. DEPTH B25.0B
E4	VAR. DEPTH B25.0C
R1	2'-6" CONCRETE CURB & GUTTER
R2	1'-6" CONCRETE CURB & GUTTER
R3	5' MONOLITHIC CONCRETE ISLAND (KEYED-IN)
S	4" CONCRETE SIDEWALK
T	EARTH MATERIAL
U	EXISTING PAVEMENT
V	MILLING EXISTING PAVEMENT (3')
W	WEDGING

NOTES:
1) PAVEMENT EDGE SLOPES ARE 1:1 UNLESS OTHERWISE NOTED.

10/9/2017 K:\CHL\PRJ\01036284_U-5806_Concord Mills Flyover\04_CADD\Set\2017-10-05 (DocuSign_Plan)\Roadway\Proj\U5806_rty_typ.dgn