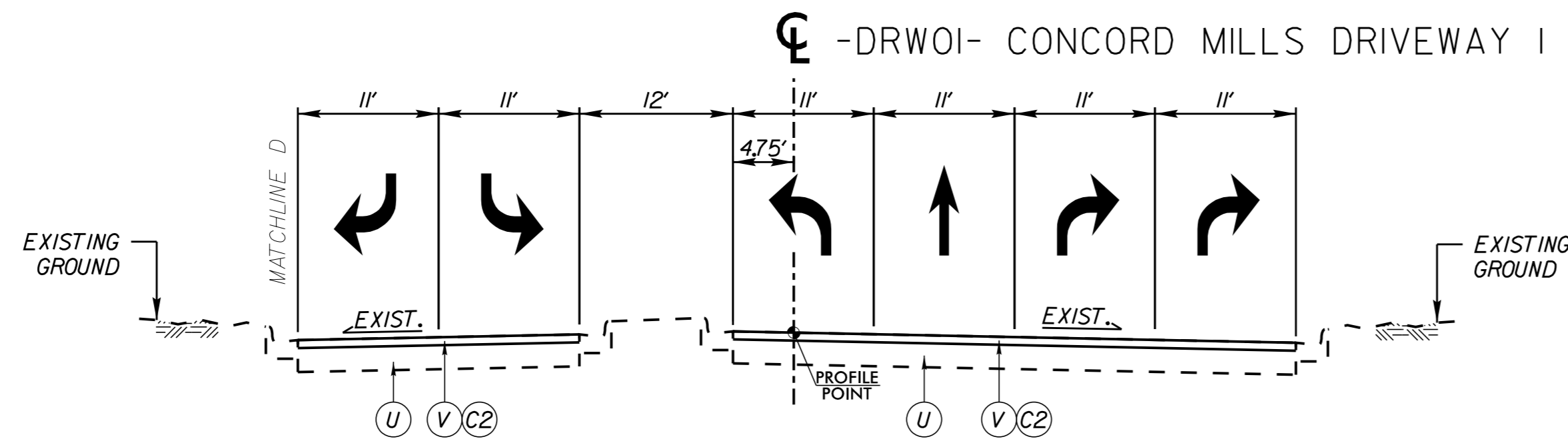


PROJECT REFERENCE NO. U-5806	SHEET NO. 2A-3
ROADWAY DESIGN ENGINEER SEAL 031788 10/9/2017	PAVEMENT DESIGN ENGINEER SEAL 022896 10/10/2017 Clark Harrison

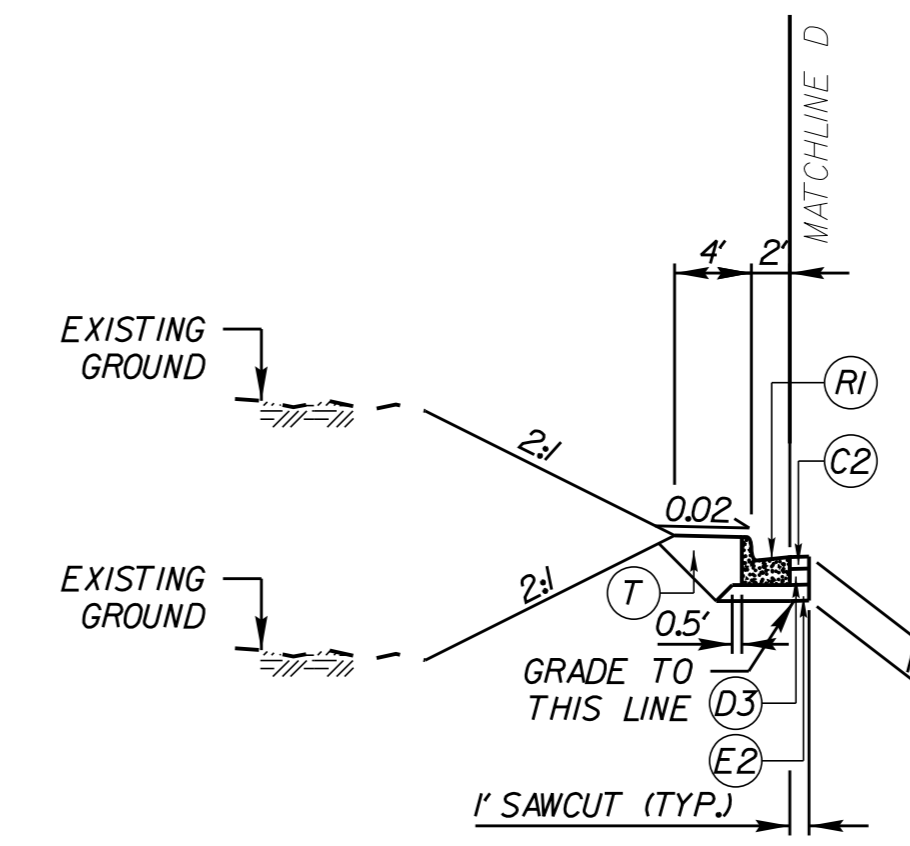
**DOCUMENT NOT CONSIDERED FINAL  
UNLESS ALL SIGNATURES COMPLETED**

**PAVEMENT SCHEDULE**  
(FINAL PAVEMENT DESIGN)

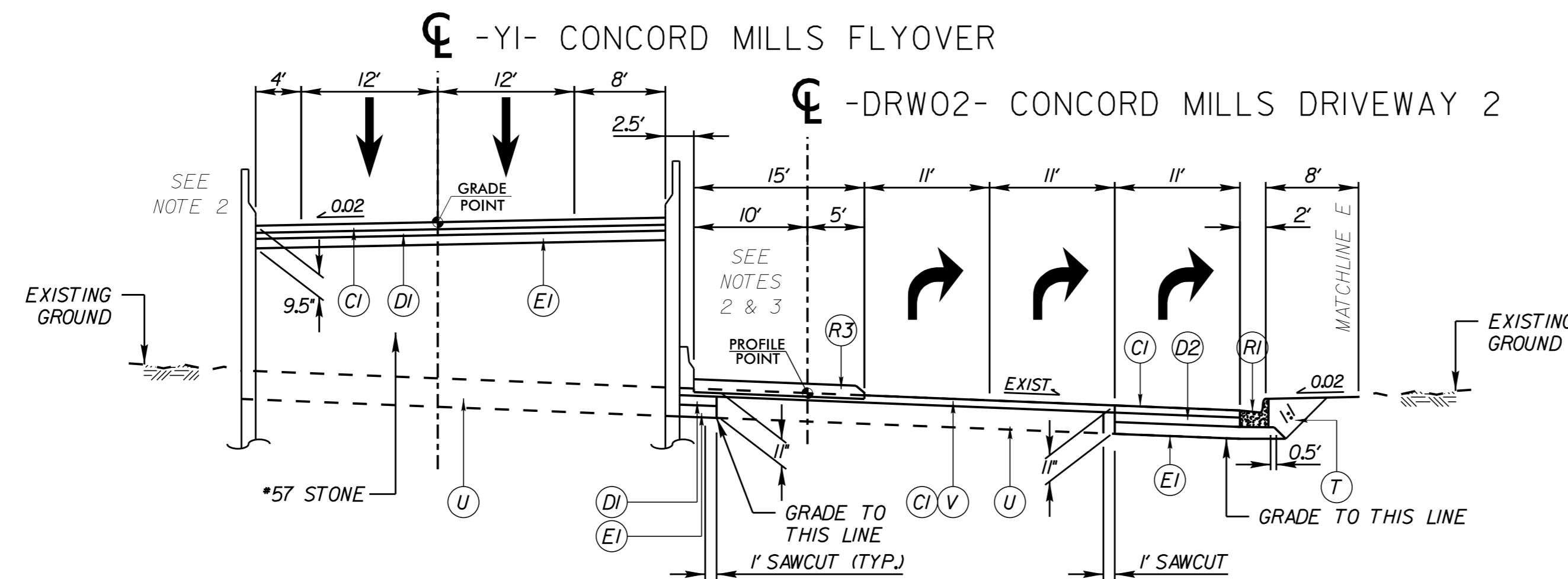
C1	3" S9.5B
C2	3" S9.5C
C3	VAR. DEPTH S9.5B
C4	VAR. DEPTH S9.5C
D1	2.5" I19.0B
D2	4" I19.0B
D3	4" I19.0C
D4	VAR. DEPTH I19.0B
D5	VAR. DEPTH I19.0C
E1	4" B25.0B
E2	4" B25.0C
E3	VAR. DEPTH B25.0B
E4	VAR. DEPTH B25.0C
R1	2'-6" CONCRETE CURB & GUTTER
R2	1'-6" CONCRETE CURB & GUTTER
R3	5' MONOLITHIC CONCRETE ISLAND (KEYED-IN)
S	4" CONCRETE SIDEWALK
T	EARTH MATERIAL
U	EXISTING PAVEMENT
V	MILLING EXISTING PAVEMENT (3')
W	WEDGING



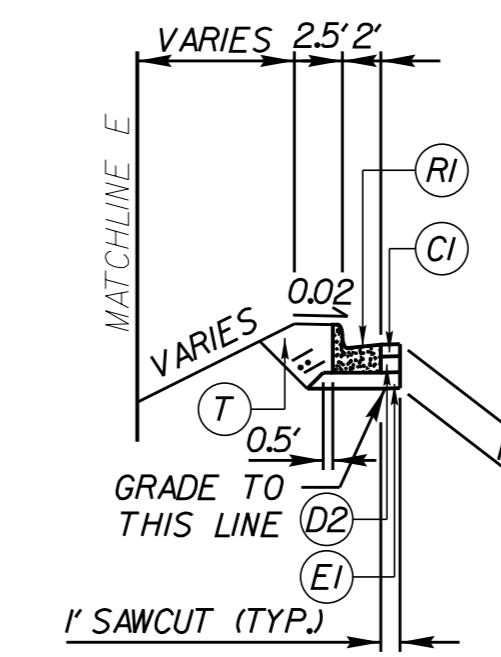
**TYPICAL SECTION NO. 6**  
-DRW01- STA 11+00.46 TO STA 13+04.32



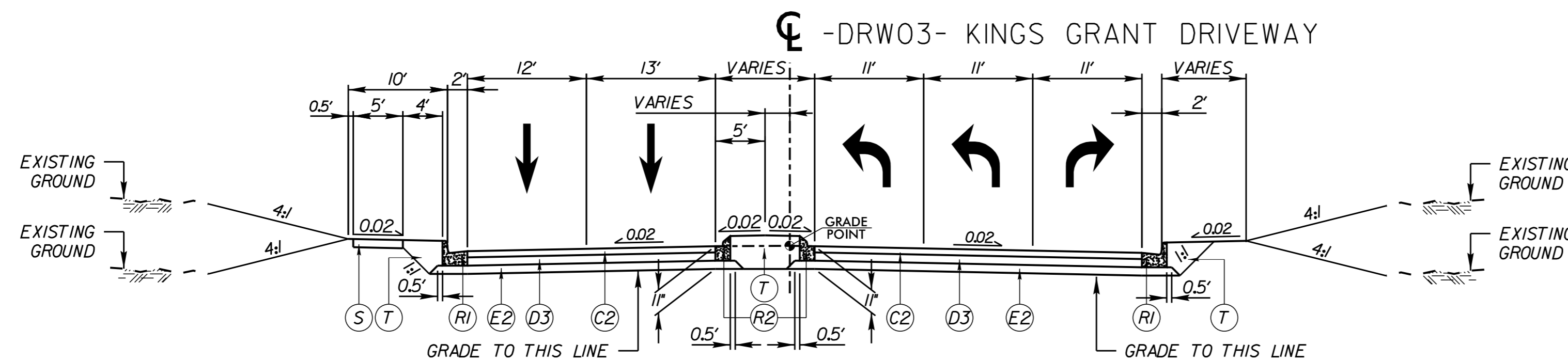
**TYPICAL SECTION NO. 6A**  
-DRW01- STA 11+97.08 TO STA 12+61.32 LT



**TYPICAL SECTION NO. 7**  
-DRW02- STA 10+11.03 TO STA 14+17.46  
-Y1- STA 10+11.03 TO STA 13+51.16 (BEGIN BRIDGE)



**TYPICAL SECTION NO. 7A**  
-DRW02- STA 13+32.07 TO STA 13+80.86 RT



**TYPICAL SECTION NO. 8**  
-DRW03- STA 11+60.00 TO STA 12+72.39

- NOTES:  
1) PAVEMENT EDGE SLOPES ARE 1:1 UNLESS OTHERWISE NOTED.  
2) SEE PLANS FOR RETAINING WALL LOCATIONS.  
3) SEE PLANS FOR ISLAND LOCATION.

K:\CHL\PRJ\01036284\_U-5806\_Concord Mills Flyover\04\_CADD\Proj\U-5806\_rdy\_typed.dgn 10/5/2017