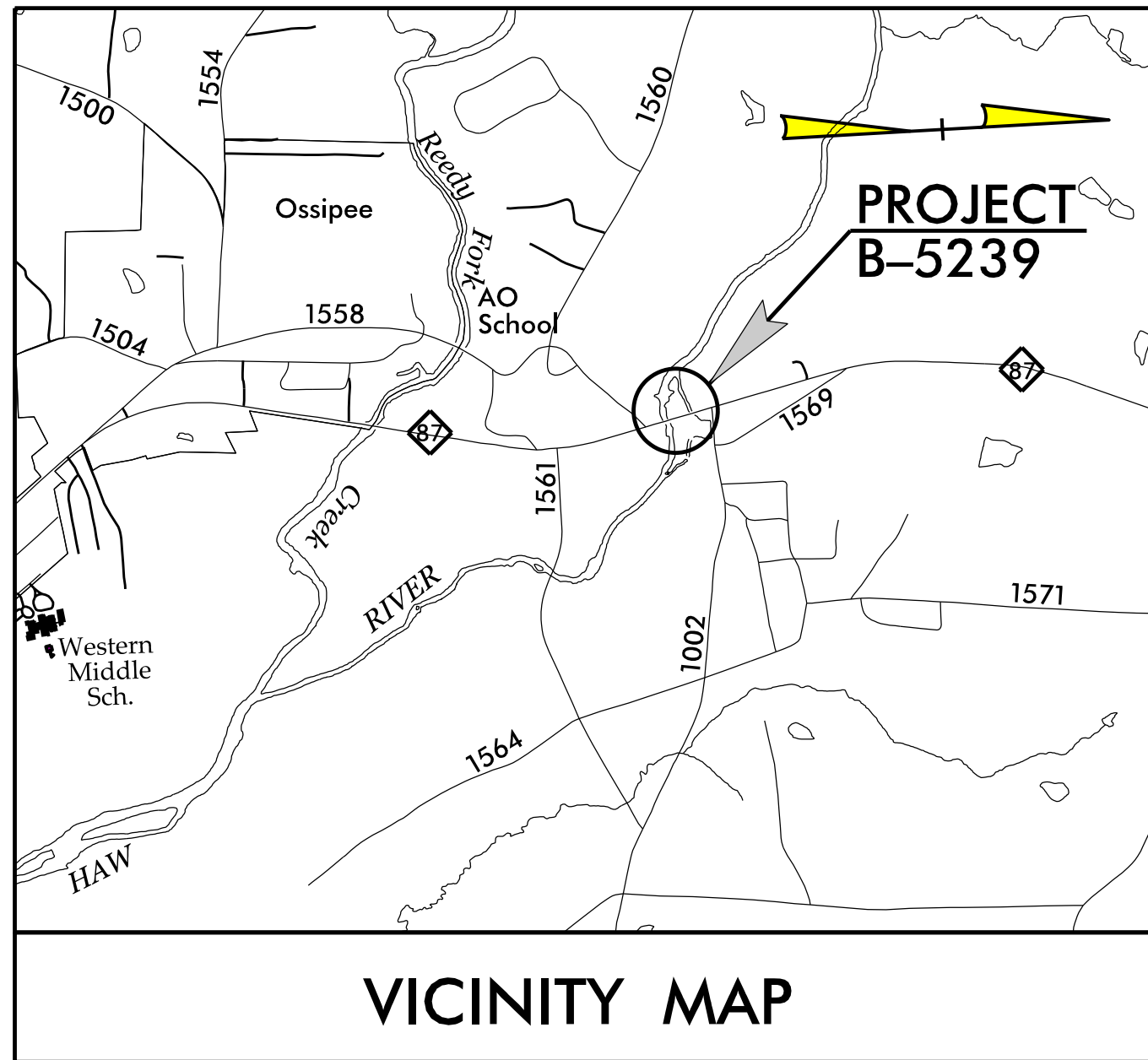


**This electronic collection of documents is provided
for the convenience of the user
and is Not a Certified Document –**

**The documents contained herein were originally issued
and sealed by the individuals whose names and license
numbers appear on each page, on the dates appearing
with their signature on that page.**

**This file or an individual page
shall not be considered a certified document.**

TIP PROJECT: B-5239



STATE OF NORTH CAROLINA
DIVISION OF HIGHWAYS

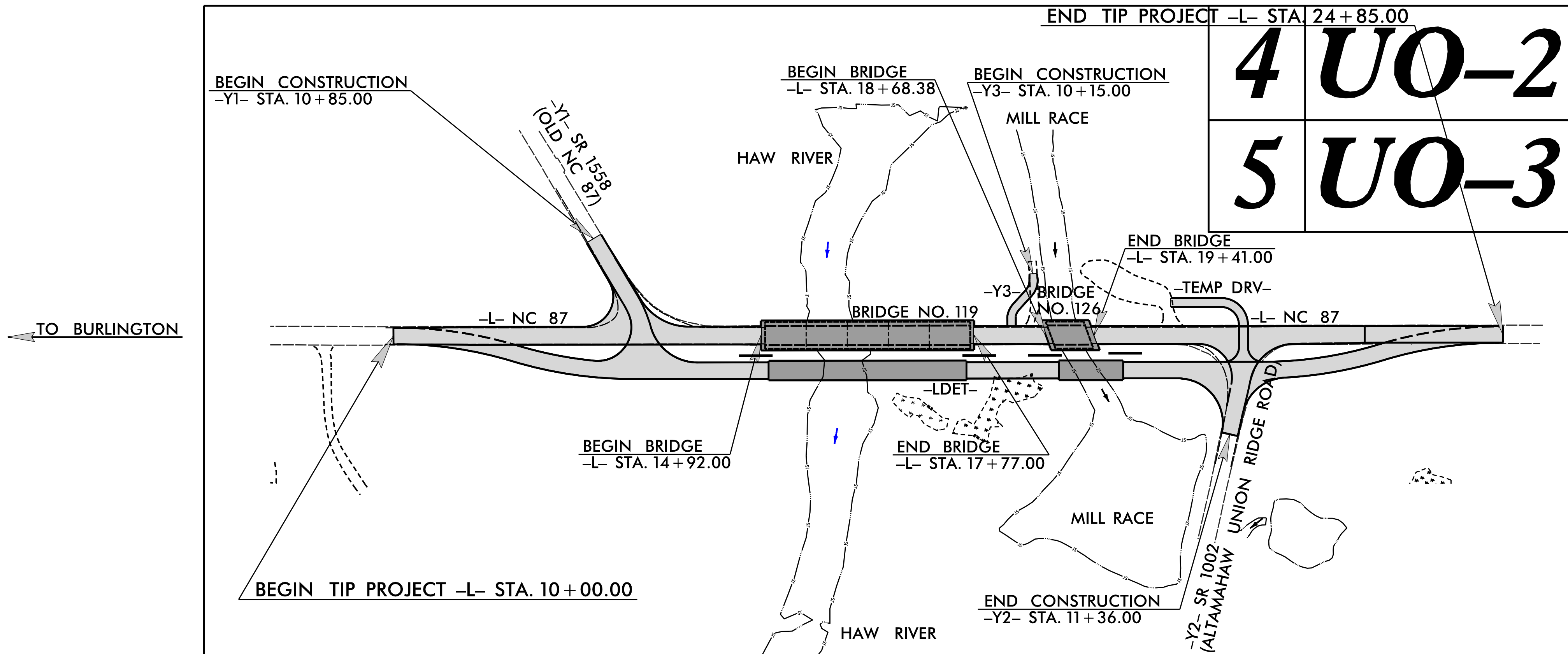
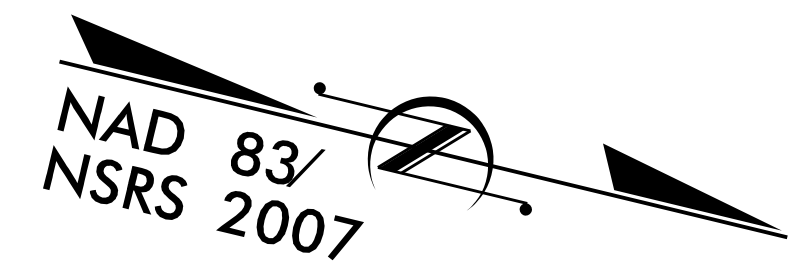
**UTILITIES BY OTHERS PLANS
ALAMANCE COUNTY**

**LOCATION: REPLACE BRIDGE NO. 126 OVER MILL RACE
& NO. 119 OVER HAW RIVER ON NC 87**

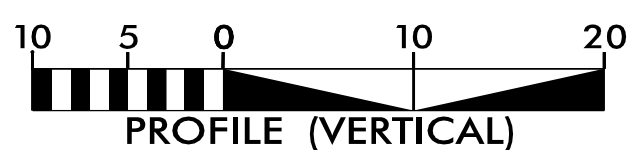
**TYPE OF WORK: PROPOSED POWER, COMMUNICATIONS,
GAS & SEWER MAIN RELOCATIONS**

T.I.P. NO.	SHEET NO.
B-5239	UO-1

NOTE:
ALL UTILITY WORK SHOWN ON THIS SHEET IS DONE BY OTHERS.
NO PAYMENT WILL BE MADE TO THE CONTRACTOR FOR UTILITY WORK SHOWN ON THIS SHEET.



GRAPHIC SCALES



INDEX OF SHEETS

SHEET NO.:	DESCRIPTION:
UO-1	TITLE SHEET
UO-2 THRU UO-3	UBO PLAN SHEETS

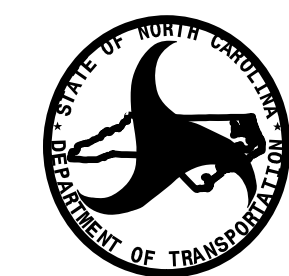
UTILITY OWNERS WITH CONFLICTS

- (A) DUKE ENERGY - POWER (DISTRIBUTION)
- (B) AT&T - COMMUNICATIONS
- (C) CHARTER - COMMUNICATIONS
- (D) PIEDMONT NATURAL GAS - GAS

PREPARED IN THE OFFICE OF:



JOHN FAISON UTILITY PROJECT MANAGER
JOSH BARBOUR PROJECT UTILITY COORDINATOR
JOSH BARBOUR PROJECT UTILITY DESIGNER

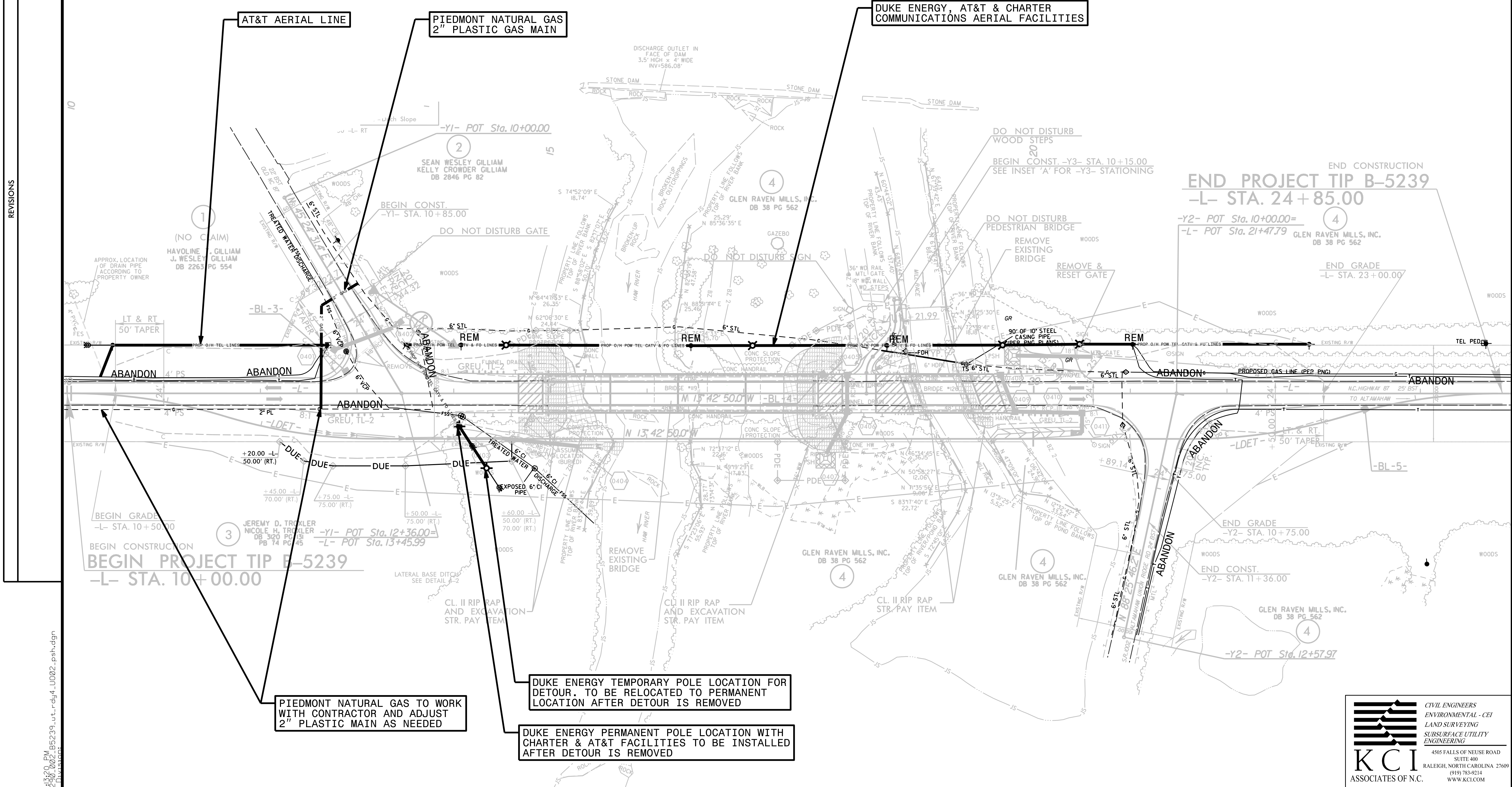
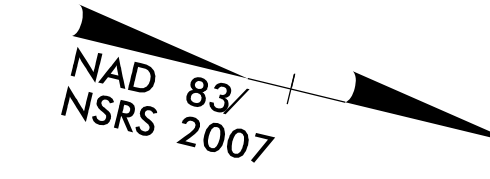


DIVISION OF HIGHWAYS
UTILITIES UNIT
1555 MAIL SERVICES CENTER
RALEIGH, NC 27699-1555
PHONE (919) 707-6690
FAX (919) 250-4151

DONNA JACKSON, PE CENTRAL UTILITIES MANAGER
DON PROPER SENIOR UTILITIES ENGINEER
KYLE PLEASANT REGIONAL UTILITY COORDINATOR
KYLE PLEASANT UTILITIES COORDINATOR

UTILITIES BY OTHERS

NOTE:
ALL UTILITY WORK SHOWN ON THIS SHEET IS DONE BY OTHERS.
NO PAYMENT WILL BE MADE TO THE CONTRACTOR FOR UTILITY WORK SHOWN ON THIS SHEET.



END CONSTRUCTION
END PROJECT TIP B-5239
-L- STA. 24 + 85.00

BEGIN CONSTRUCTION
BEGIN PROJECT TIP B-5239
-L- STA. 10 + 00.00

PIEDMONT NATURAL GAS TO WORK WITH CONTRACTOR AND ADJUST 2" PLASTIC MAIN AS NEEDED

DUKE ENERGY TEMPORARY POLE LOCATION FOR DETOUR. TO BE RELOCATED TO PERMANENT LOCATION AFTER DETOUR IS REMOVED

DUKE ENERGY PERMANENT POLE LOCATION WITH CHARTER & AT&T FACILITIES TO BE INSTALLED AFTER DETOUR IS REMOVED

REVISIONS

8/17/99

11:20 PM 8/17/99 B5239_ut_r.dwg L002_psh.dgn

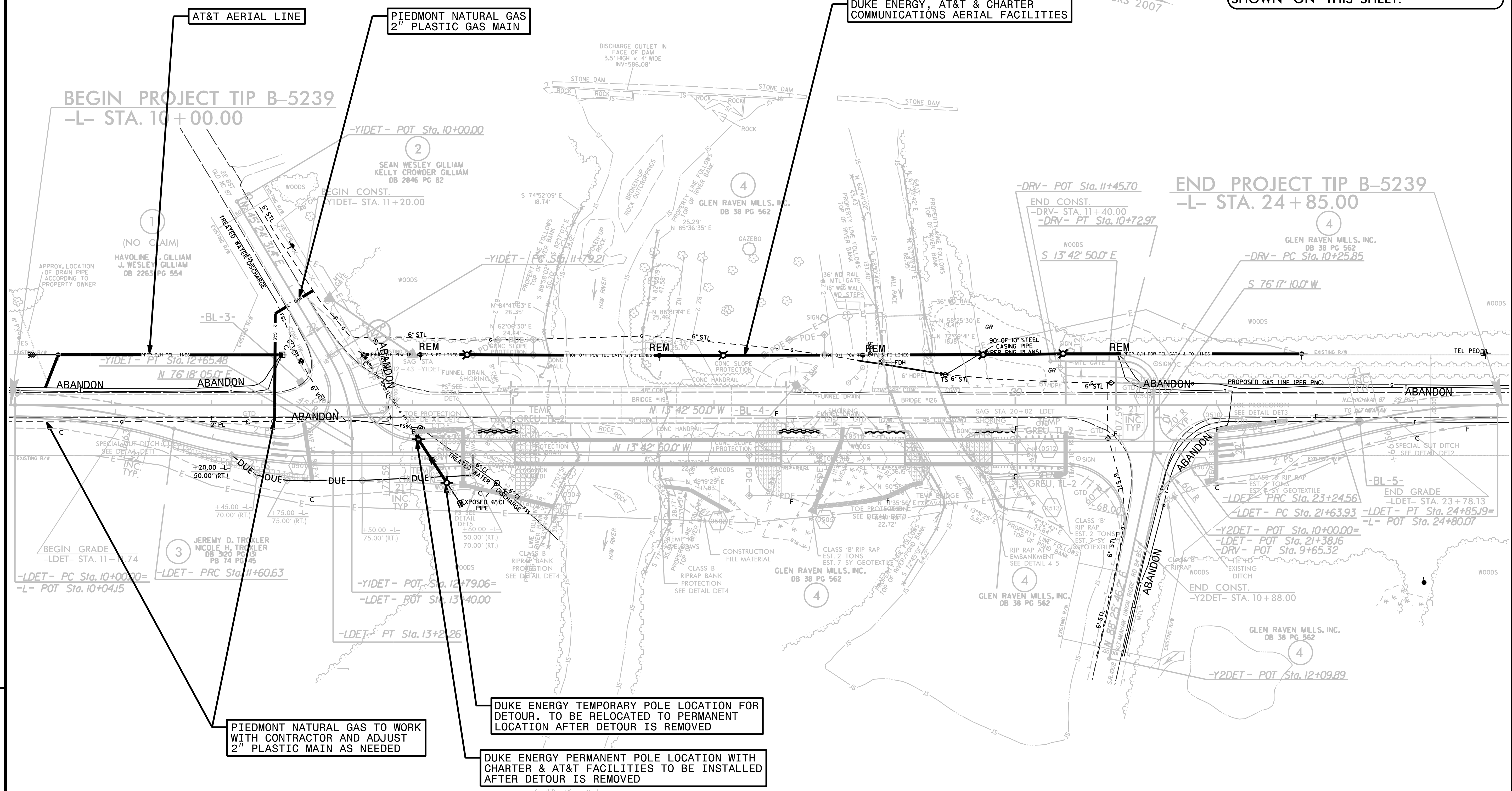
**CIVIL ENGINEERS
ENVIRONMENTAL - CEI
LAND SURVEYING
SUBSURFACE UTILITY
ENGINEERING**

KCI
ASSOCIATES OF N.C.

4505 FALLS OF NEUSE ROAD
SUITE 400
RALEIGH, NORTH CAROLINA 27609
(919) 785-9214
WWW.KCI.COM

UTILITIES BY OTHERS

NOTE:
ALL UTILITY WORK SHOWN ON THIS SHEET IS DONE BY OTHERS.
NO PAYMENT WILL BE MADE TO THE CONTRACTOR FOR UTILITY WORK SHOWN ON THIS SHEET.



PIEDMONT NATURAL GAS TO WORK WITH CONTRACTOR AND ADJUST 2\"/>

DUKE ENERGY TEMPORARY POLE LOCATION FOR DETOUR. TO BE RELOCATED TO PERMANENT LOCATION AFTER DETOUR IS REMOVED

DUKE ENERGY PERMANENT POLE LOCATION WITH CHARTER & AT&T FACILITIES TO BE INSTALLED AFTER DETOUR IS REMOVED

REVISIONS

81799

11511_PN
200_003_B5239_u_rdy5_UO03_psh.dgn
Division