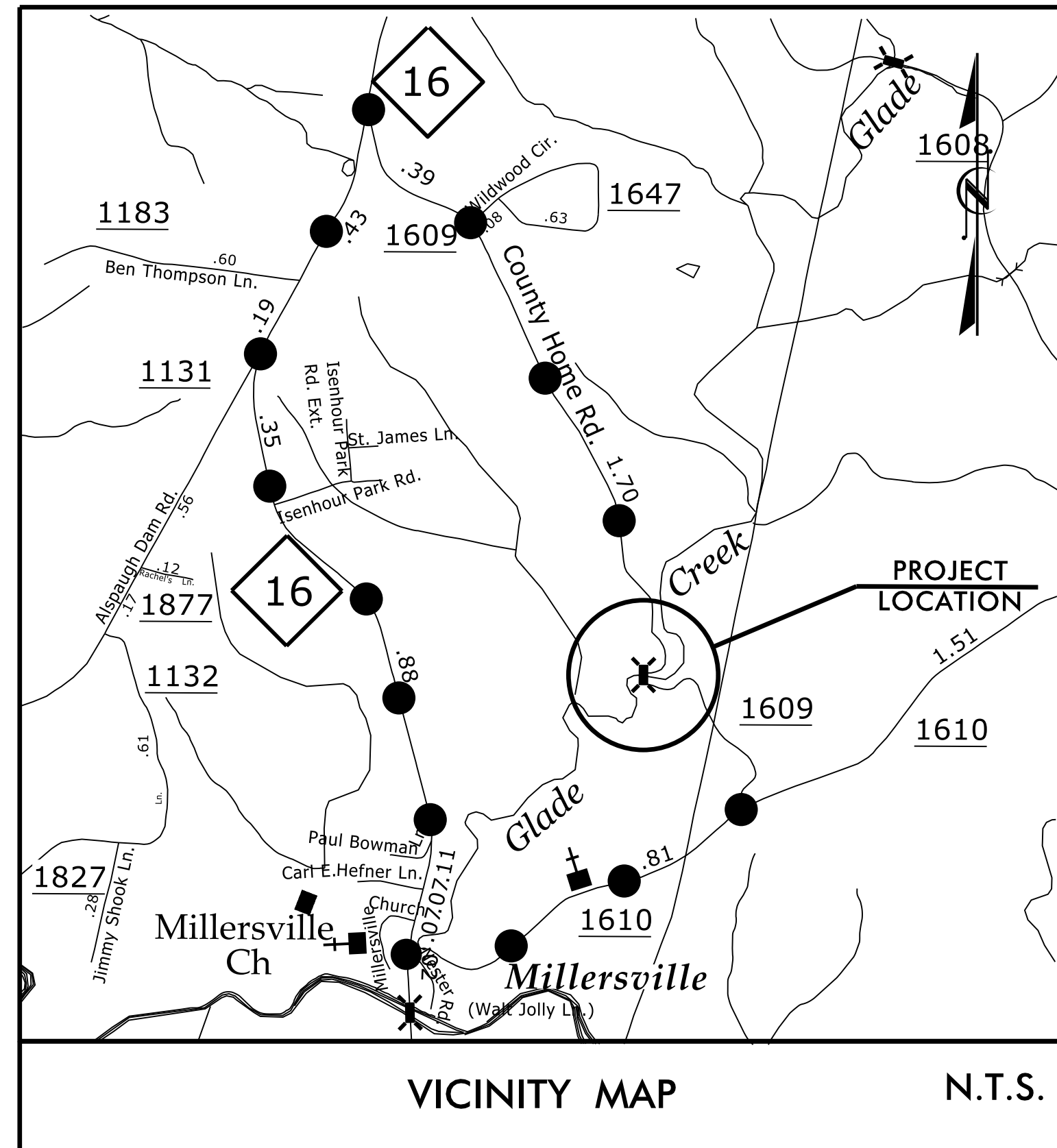


TIP PROJECT: B-5391

CONTRACT: C203990



VICINITY MAP

N.T.S.

●—●—●—● OFFSITE DETOUR

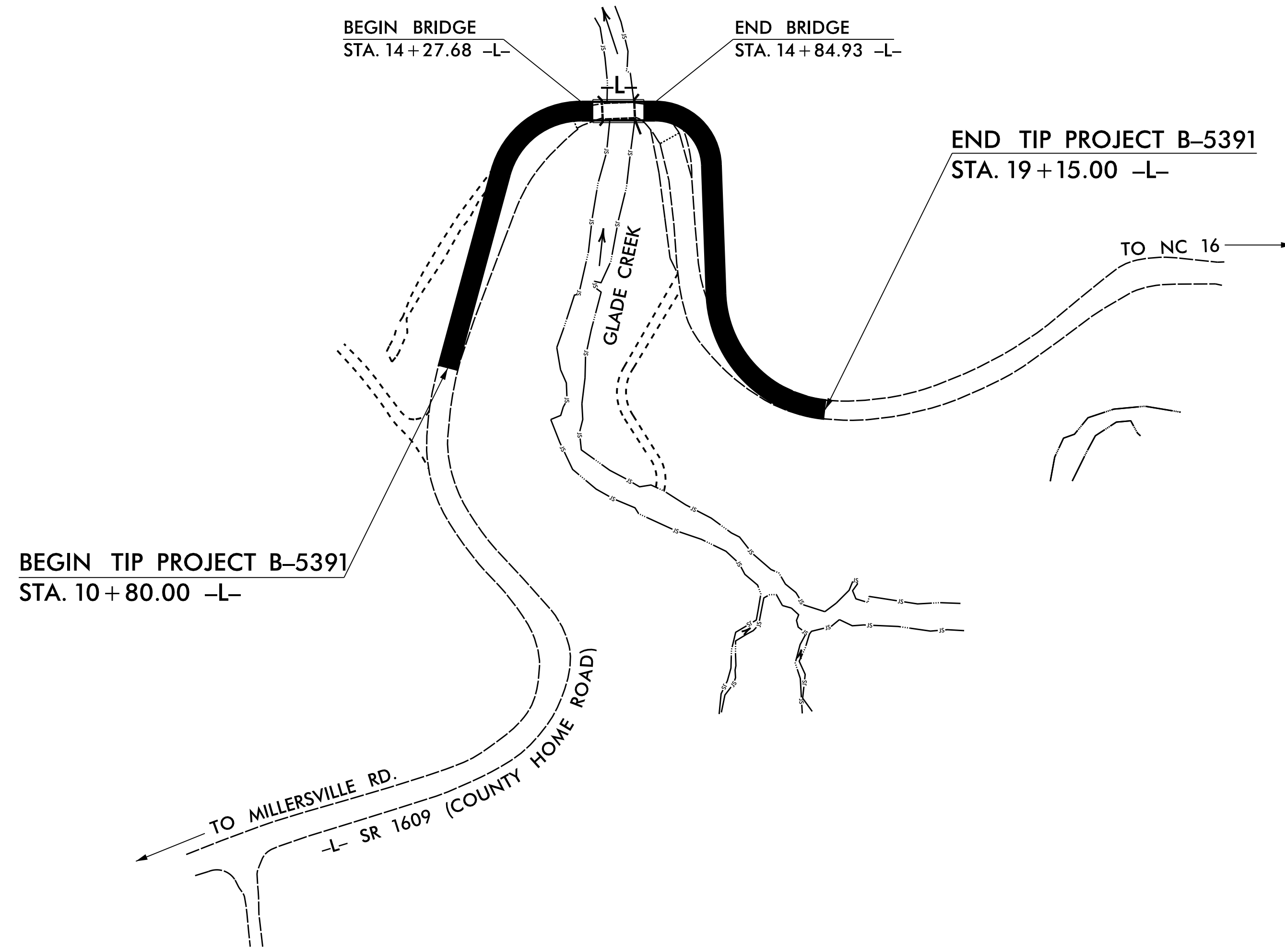
STATE OF NORTH CAROLINA
DIVISION OF HIGHWAYS

ALEXANDER COUNTY

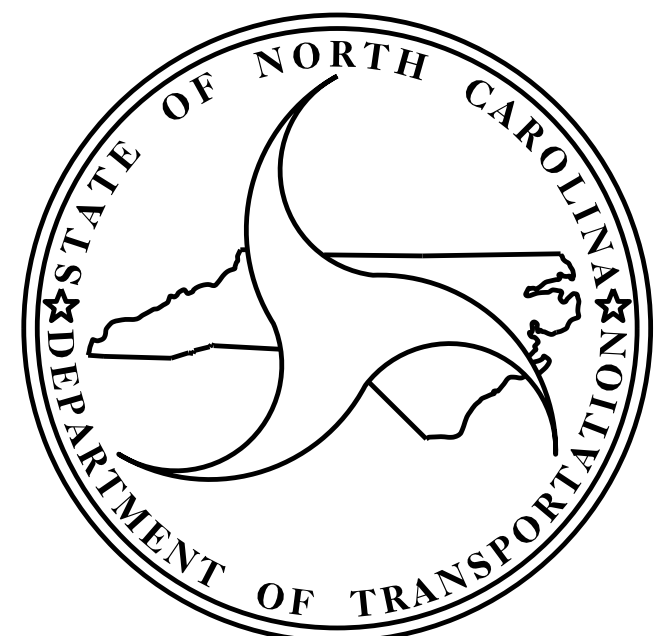
**LOCATION: BRIDGE NO. 139 OVER GLADE CREEK
ON SR 1609 (COUNTY HOME ROAD)**

TYPE OF WORK: GRADING, DRAINAGE, PAVING, & STRUCTURE

STATE	STATE PROJECT REFERENCE NO.	SHEET NO.	TOTAL SHEETS
N.C.	B-5391		
STATE PROJ. NO.	F.A. PROJ. NO.	DESCRIPTION	
46106.1.1	BRZ-1609(2)	P.E.	
46106.2.1		RW, UTIL.	
46106.3.1		CONST.	



STRUCTURE



DESIGN DATA

ADT 2017 = 115
 ADT 2040 = 200
 DHV = 19 %
 D = 55 %
 T = 15 % *
 V = 55 MPH
 * TTST = 1% DUAL 14%
 FUNC. CLASS. =
 RURAL LOCAL
 SUBREGIONAL TIER

PROJECT LENGTH

LENGTH ROADWAY TIP PROJECT B-5391 = 0.147 MILES
 LENGTH STRUCTURE TIP PROJECT B-5391 = 0.011 MILES
 TOTAL LENGTH OF TIP PROJECT B-5391 = 0.158 MILES

Prepared In the Office of:
DIVISION OF HIGHWAYS
 STRUCTURES MANAGEMENT UNIT
 1000 BIRCH RIDGE DR.
 RALEIGH, N.C. 27610

2012 STANDARD SPECIFICATIONS

LETTING DATE :

DECEMBER 19, 2017

A. KEITH PASCHAL, P.E.
PROJECT ENGINEER

MARC G. CHEEK, P.E.
PROJECT DESIGN ENGINEER