

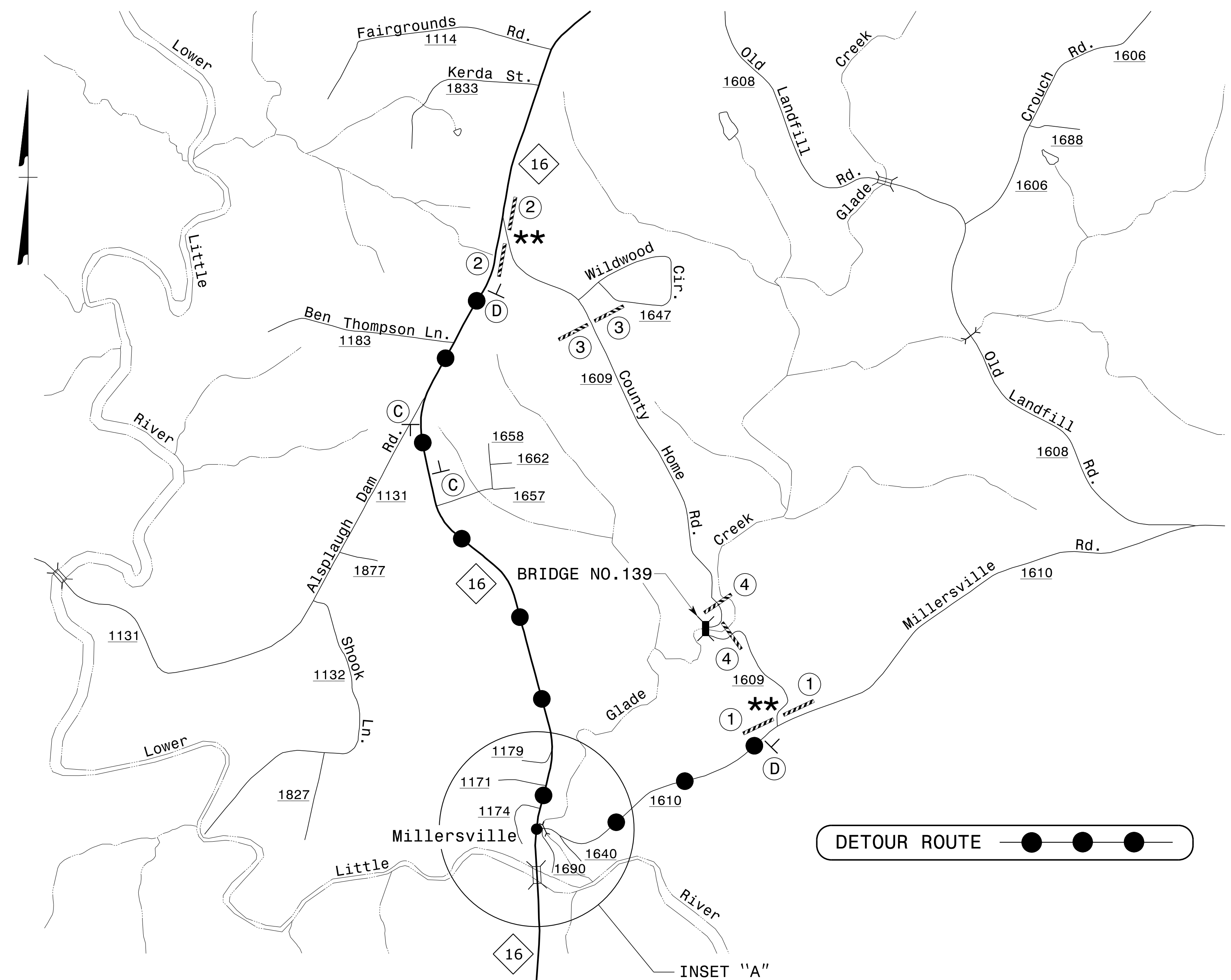
# TEMPORARY TRAFFIC CONTROL PHASING

## PHASE I

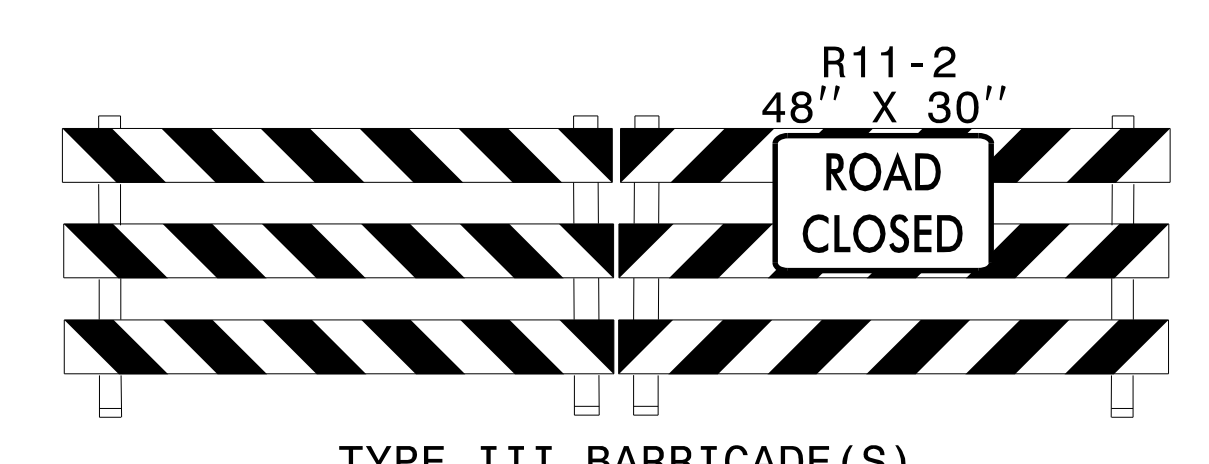
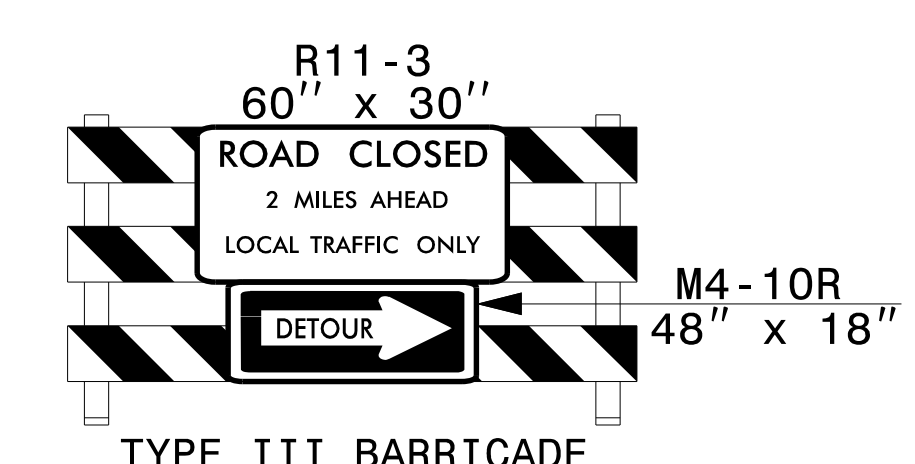
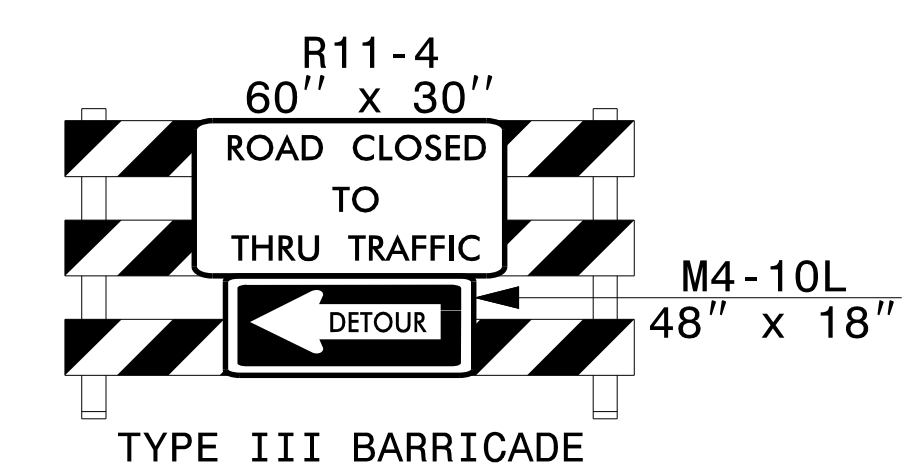
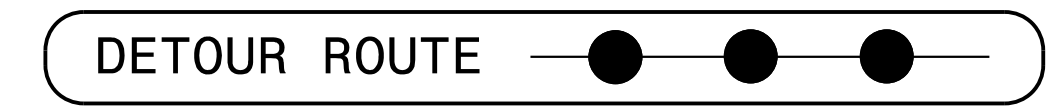
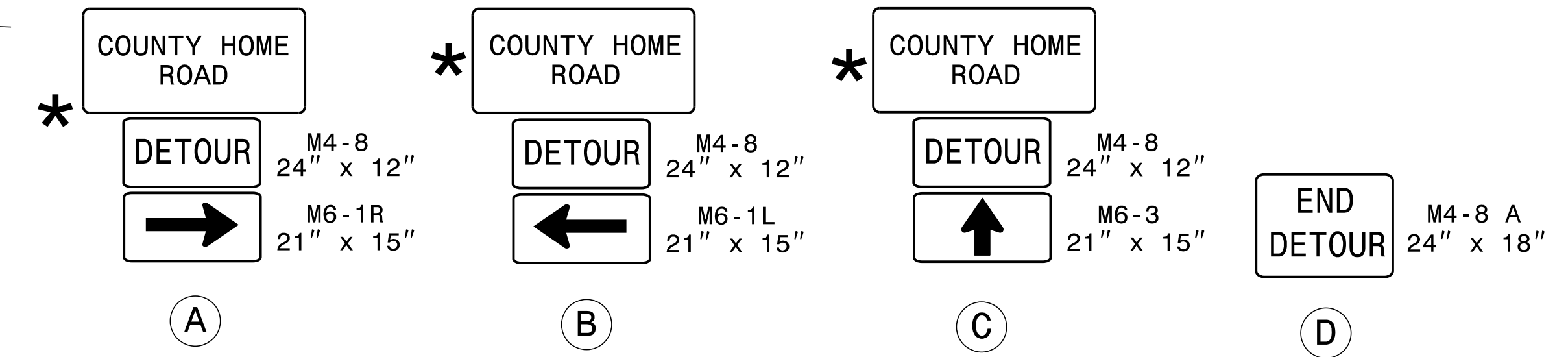
- STEP 1. INSTALL ALL OFF-SITE DETOUR SIGNING (SEE TMP-3).  
 - USING RSD 1101.03 (SHEET 1 OF 9), CLOSE SR 1609 (COUNTY HOME ROAD) FROM STA. 10+80+/- -L- TO STA. 19+15+/- -L-.

## PHASE II

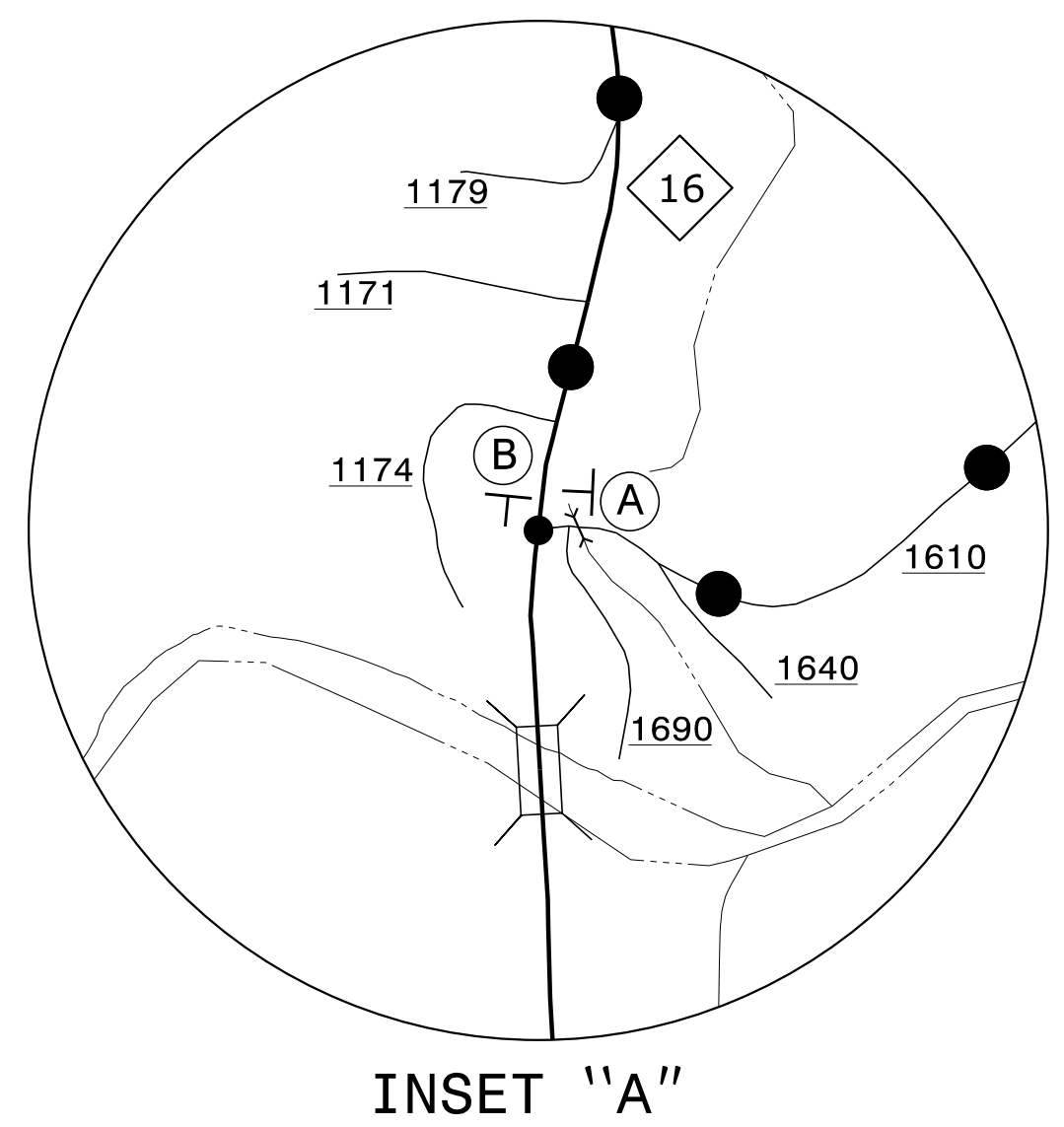
- STEP 1. AWAY FROM TRAFFIC, REMOVE EXISTING BRIDGE, CONSTRUCT NEW BRIDGE AND ROADWAY APPROACHES, DRAINAGE, GUARDRAIL, AND PAVE UP TO THE FINAL LAYER OF SURFACE COURSE AS FOLLOWS (SEE CONSTRUCTION PLANS):  
 - STA. 10+80+/- -L- TO STA. 19+15+/- -L-  
 - PLACE FINAL PAVEMENT MARKINGS AND MARKERS (SEE FINAL PAVEMENT MARKING PLAN).  
 STEP 2. REMOVE ALL TYPE III BARRICADES AND DETOUR SIGNING. REOPEN SR 1609 (COUNTY HOME ROAD) TO A 2-LANE, 2-WAY TRAFFIC PATTERN.



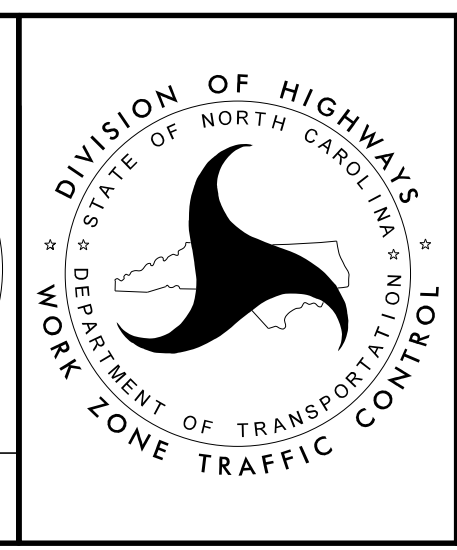
\* SEE SHEET TMP-2 FOR SIGN DESIGN



\*\* SEE RSD 1101.03, SHEET 1 OF 9, FOR ADDITIONAL WORK ZONE SIGNS AND LOCATIONS



APPROVED: *Kenneth C. Thornwell Jr., P.E.*  
 DATE: 9/6/2017  
 DOCUMENT NOT CONSIDERED FINAL UNLESS ALL SIGNATURES COMPLETED



TEMPORARY TRAFFIC CONTROL PHASING AND OFF-SITE DETOUR COUNTY HOME ROAD SR 1609