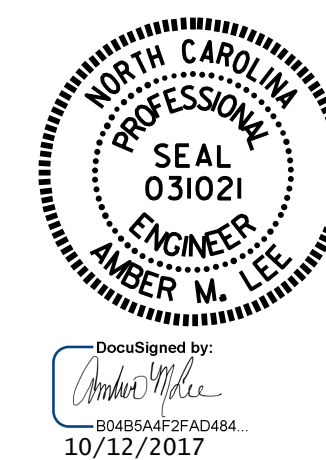


PLAN OF FOOTING

PROJECT NO. B-4978
WILKES COUNTY
 STATION: 12+36.12 -L-

SHEET 2 OF 4



STATE OF NORTH CAROLINA
 DEPARTMENT OF TRANSPORTATION
 RALEIGH

SUBSTRUCTURE
 END BENT 2

DRAWN BY : A. SORSENGINH DATE : 10-9-17
 CHECKED BY : H. T. BARBOUR DATE : 10-11-17
 DESIGN ENGINEER OF RECORD: A. SORSENGINH DATE : 10-11-17

DOCUMENT NOT CONSIDERED
 FINAL UNLESS ALL
 SIGNATURES COMPLETED

REVISIONS						SHEET NO.	
NO.	BY:	DATE:	NO.	BY:	DATE:	S-15	
1			3			TOTAL SHEETS	
2			4			19	