

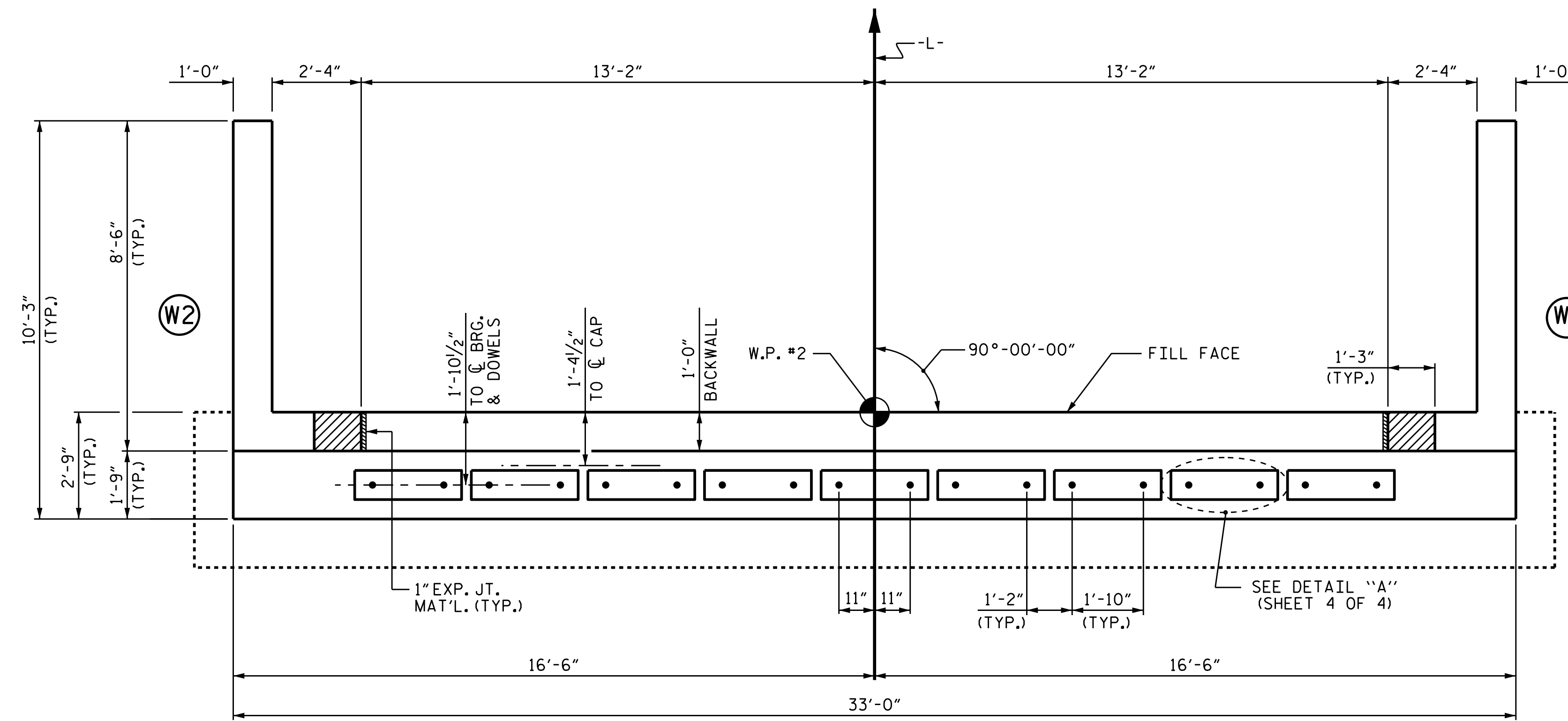
NOTES

STIRRUPS IN CAP MAY BE SHIFTED AS NECESSARY TO CLEAR DOWELS.

THE CONCRETE IN THE SHADED AREA OF THE WING SHALL BE POURED AFTER THE VERTICAL CONCRETE BARRIER RAIL IS CAST IF SLIP FORMING IS USED.

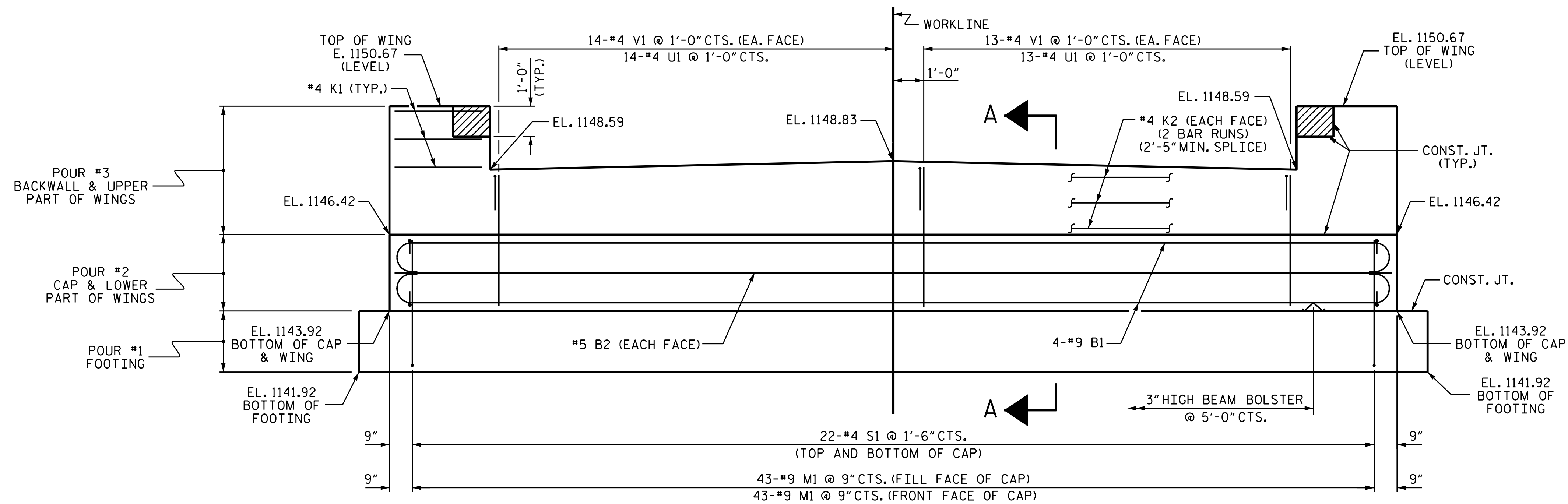
FOR WING DETAILS, SEE SHEET 3 OF 4.

INSTALL THE 4" Ø DRAIN PIPE THROUGH WINGWALL AS REQUIRED FOR SUBREGIONAL TIER BRIDGE APPROACH FILLS, SEE THE ROADWAY PLANS. REINFORCING STEEL IN THE WINGWALL MAY BE SHIFTED AS NECESSARY TO CLEAR THE DRAIN PIPE.



PLAN

FOR FOOTING DIMENSIONS AND REINFORCING STEEL, SEE SHEET 2 OF 4

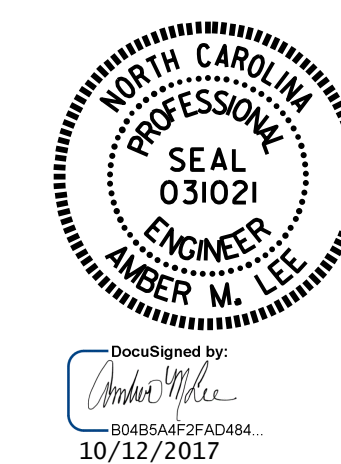


ELEVATION

WINGS NOT SHOWN FOR CLARITY.
FOR SECTION A-A, SEE SHEET 4 OF 4.

PROJECT NO. B-4978
WILKES COUNTY
 STATION: 12+36.12 -L-

SHEET 1 OF 4



STATE OF NORTH CAROLINA
 DEPARTMENT OF TRANSPORTATION
 RALEIGH
 SUBSTRUCTURE
 END BENT 2

DRAWN BY : H. T. BARBOUR DATE : 10-10-17
 CHECKED BY : H. T. BARBOUR DATE : 10-11-17
 DESIGN ENGINEER OF RECORD: A. SORSENGINH DATE : 10-11-17

DOCUMENT NOT CONSIDERED
 FINAL UNLESS ALL
 SIGNATURES COMPLETED

REVISIONS						SHEET NO.
NO.	BY:	DATE:	NO.	BY:	DATE:	S-14
1			3			TOTAL SHEETS
2			4			19